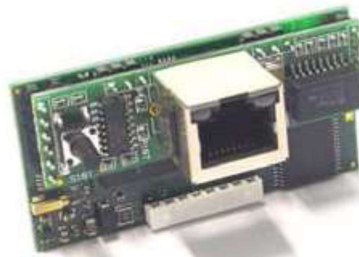




## Installation & Configuration pCOWeb Card on UC6 Controllers



**Temperzone Part No.**

pCOWeb card (shown above)

with UC6 BACnet Object Definitions installed – 201-000-480



**Temperzone Part No.**

BMS card Support Bracket (shown above)

– 060-000-119

**Date:** 17 Feb 2016

**Issue:** 2

# Contents

<b>1. Introduction.....</b>	<b>3</b>
<b>2. UC6 software requirements.....</b>	<b>3</b>
<b>3. PC configuration and connection .....</b>	<b>3</b>
<b>4. UC6 configuration .....</b>	<b>7</b>
<b>5. Installation and activation of a pCOWeb card .....</b>	<b>7</b>
<b>6. Accessing pCoWeb Web pages and clock configuration.....</b>	<b>10</b>
<b>7. BACnet configuration and testing.....</b>	<b>15</b>

# 1. Introduction

This document describes connection and configuration of a Carel pCoWEb module to enable its use with Temperzone's UC6 Controller.

# 2. UC6 software requirements

The UC6 software version should be 6.2 or higher.

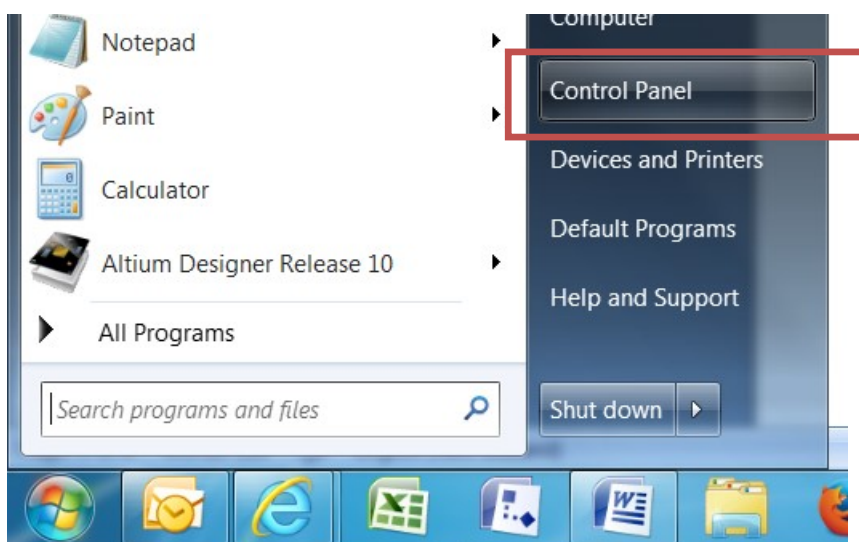
# 3. PC configuration and connection

## 3.1. PC configuration

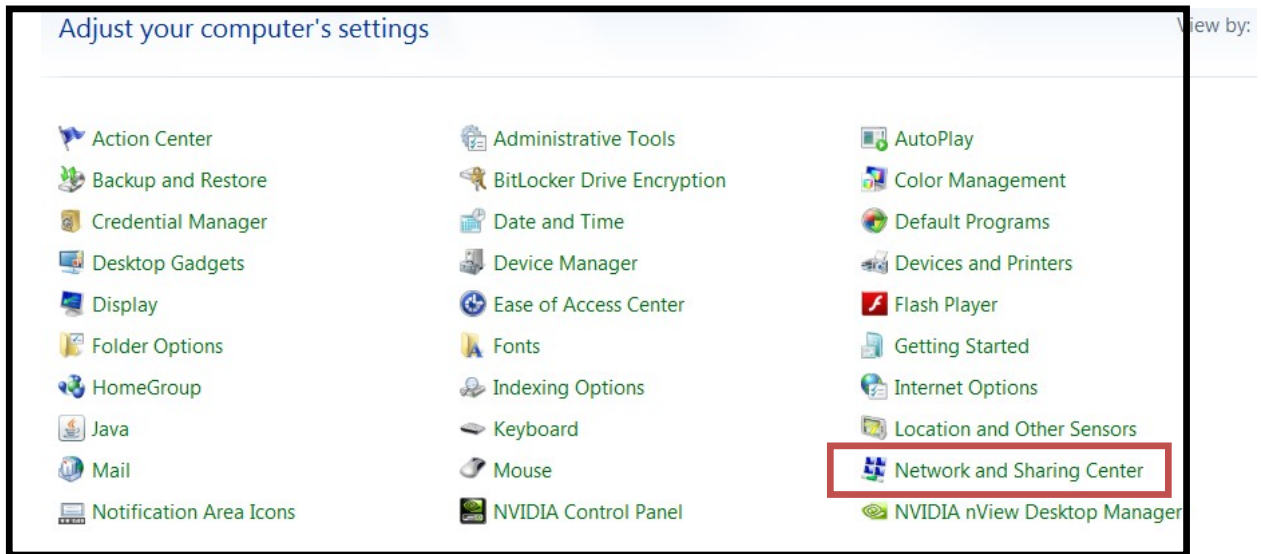
- On the Windows PC click the "Start" button at the bottom left



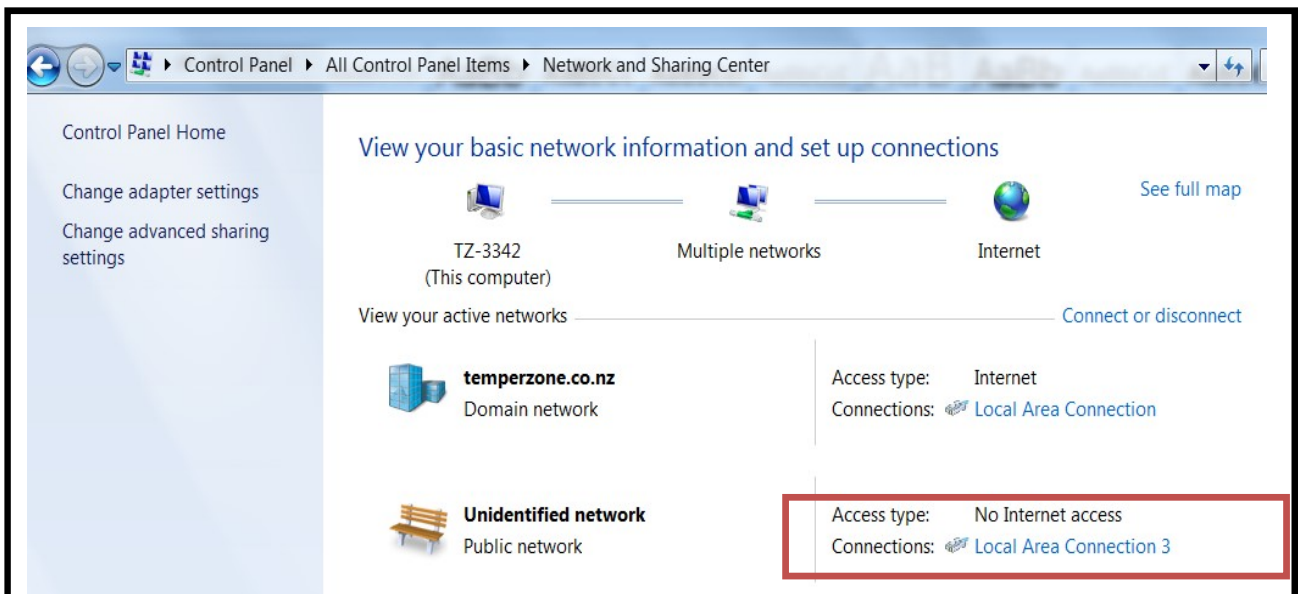
- Click "Control panel"



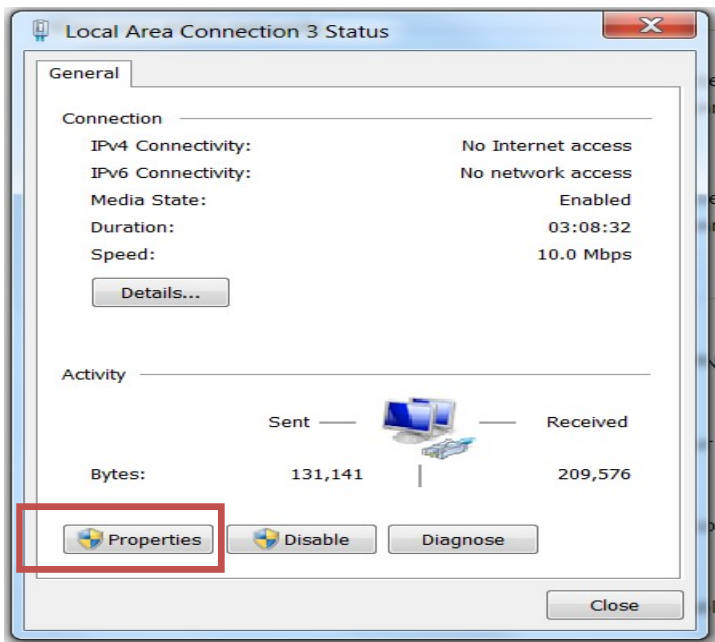
- Double click "Network and Sharing Center"



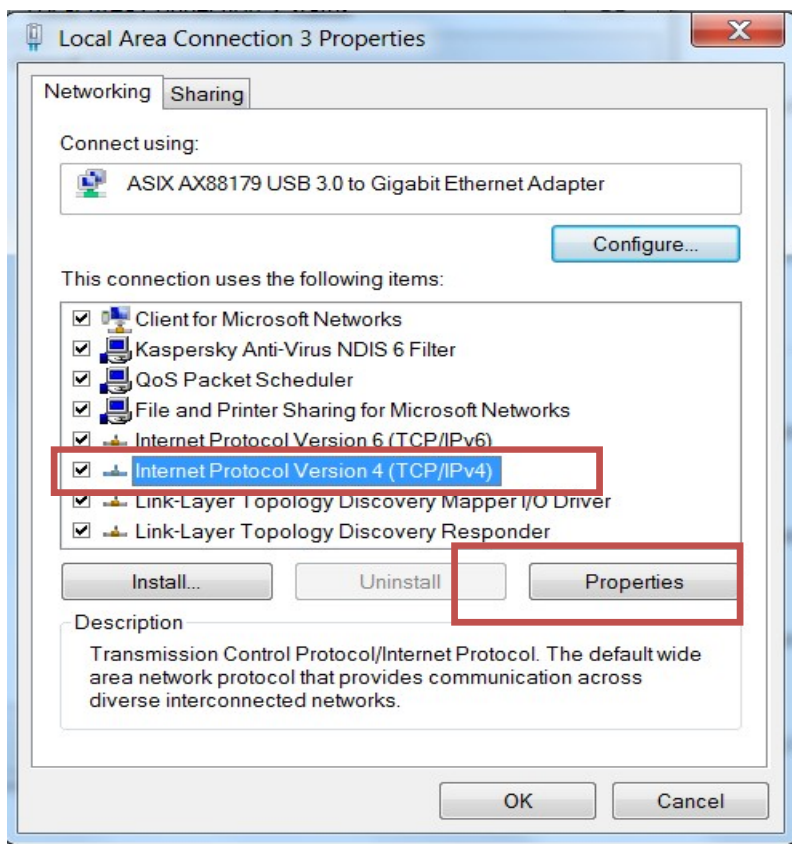
- Double click "Local area connection"



- Click "Properties":



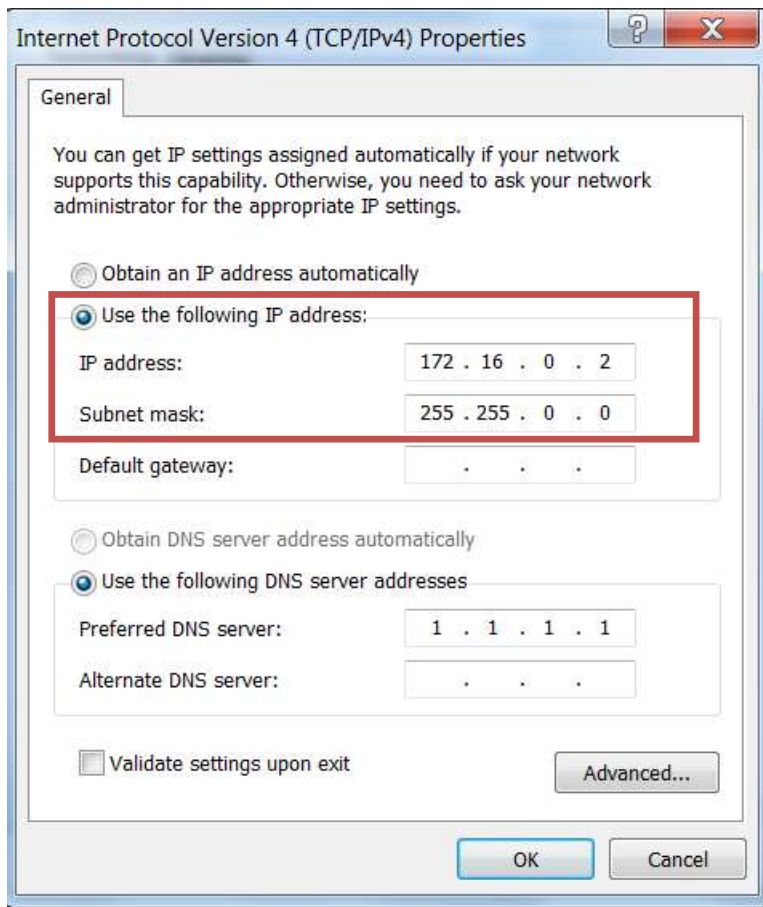
- Select "Internet Protocol Version 4 (TCP/IPv4)" and click on "Properties"



- Select static address and type:

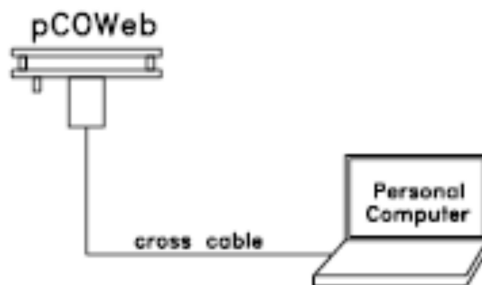
IP address: 172.16.0.2

Subnet mask: 255.255.0.0



### 3.2. PC connection

- Connect your PC to the pCOWeb card using a standard CAT-5 or CAT-6 Ethernet cross cable.



## 4. UC6 configuration

### 4.1. Setting BMS communication parameters

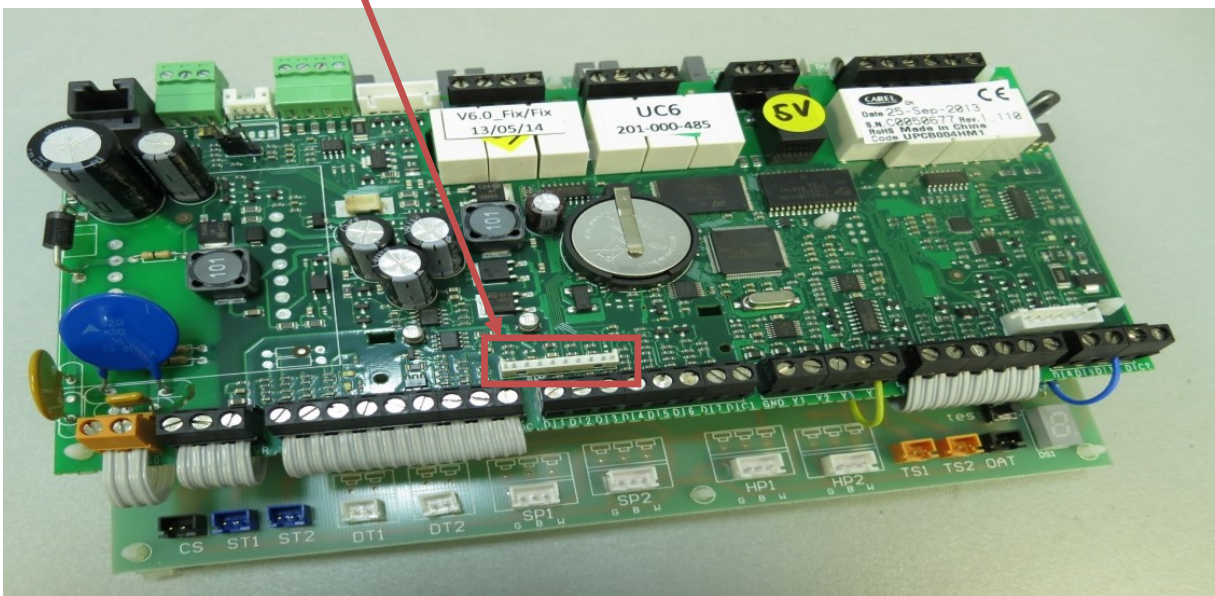
Using a Carel PGD select "Service Menu" -> "BMS Configuration" and set the following parameters:

UC6(slave) Address:	1
Protocol	Carel
Baud rate:	19200
Stop bit:	1
Parity:	Even

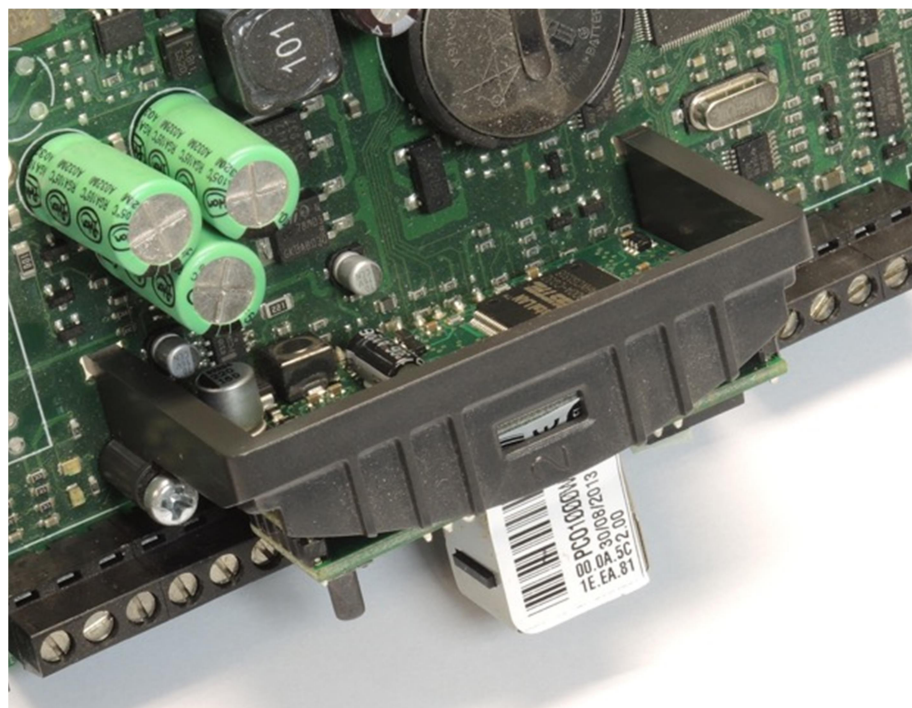
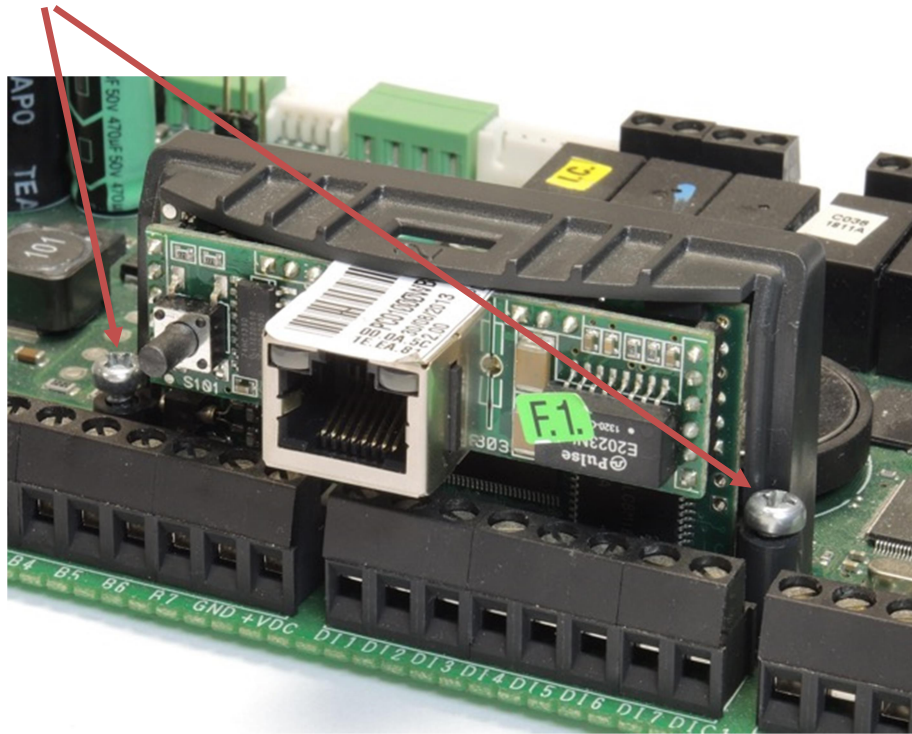
## 5. Installation and activation of a pCOWeb card

### 5.1. Installation

- Locate a BMS connector on a UC6 Controller



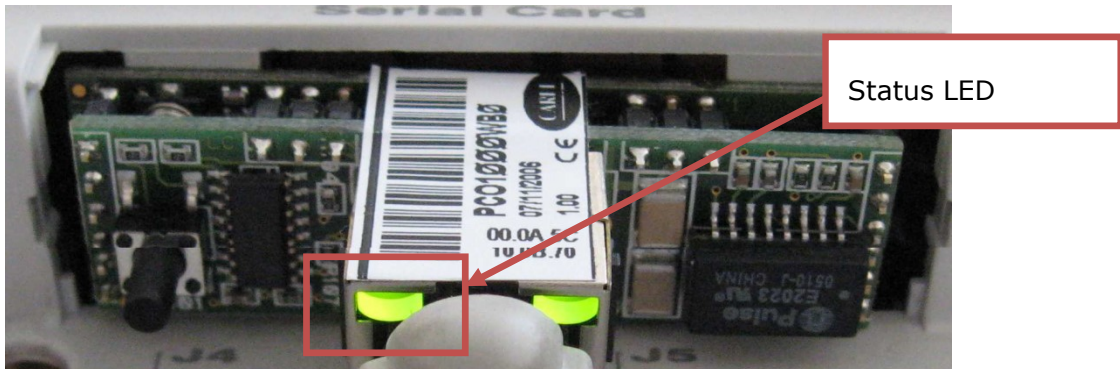
- Insert a pCOWeb card with support bracket into the BMS connector, tight two screws:



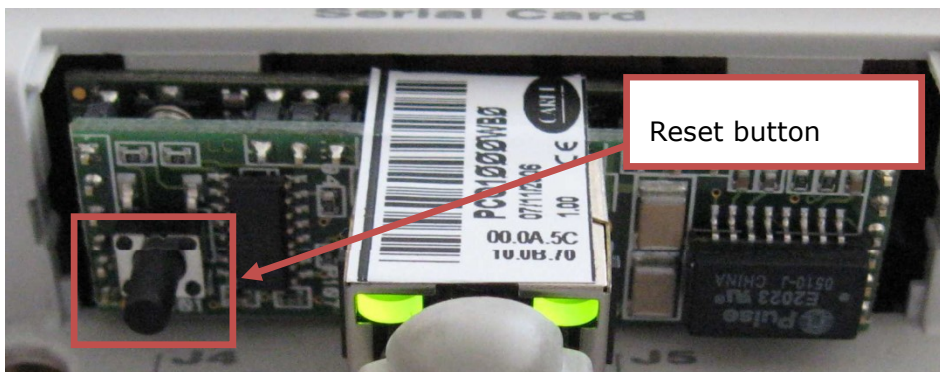


## 5.2. Activating default settings

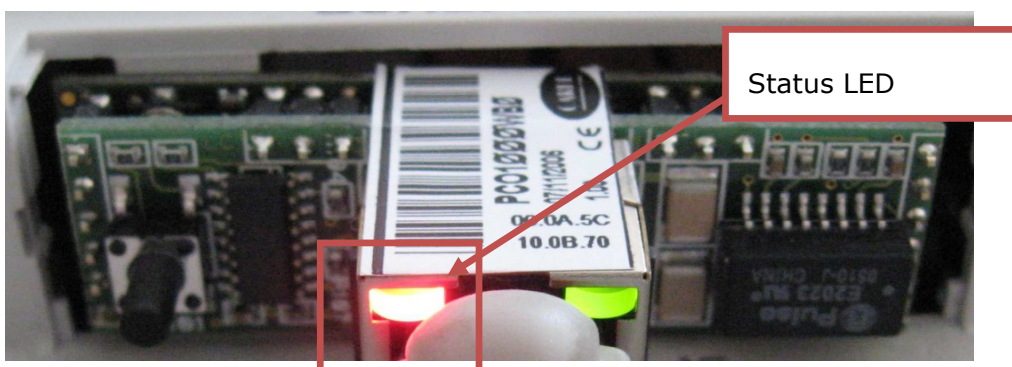
- Power up UC6 Controller and the status led of the pCOWeb card flashes quickly green/red before coming on green



- Immediately after power-up, when the status led is solid green, press and hold the reset button for approximately 20 seconds



- When the status LED turns red, the button must be released **before** the third red flash ends

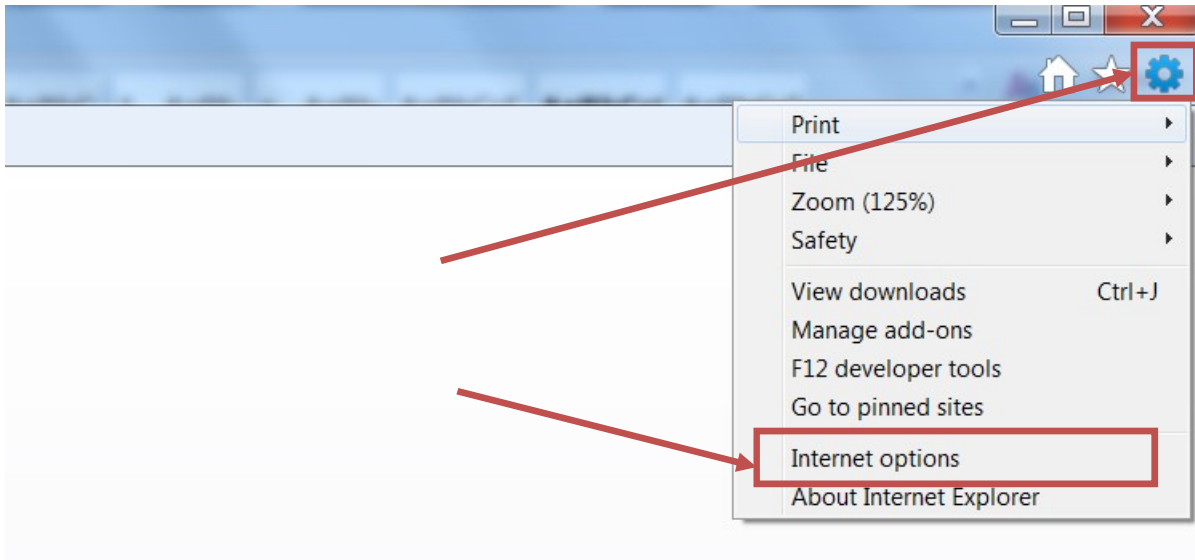


- If the procedure has been performed correctly, the Status LED will flash quickly 3 times RED, and then will come on steady GREEN again for around one minute (completion of the start-up phase). Default settings are activated.

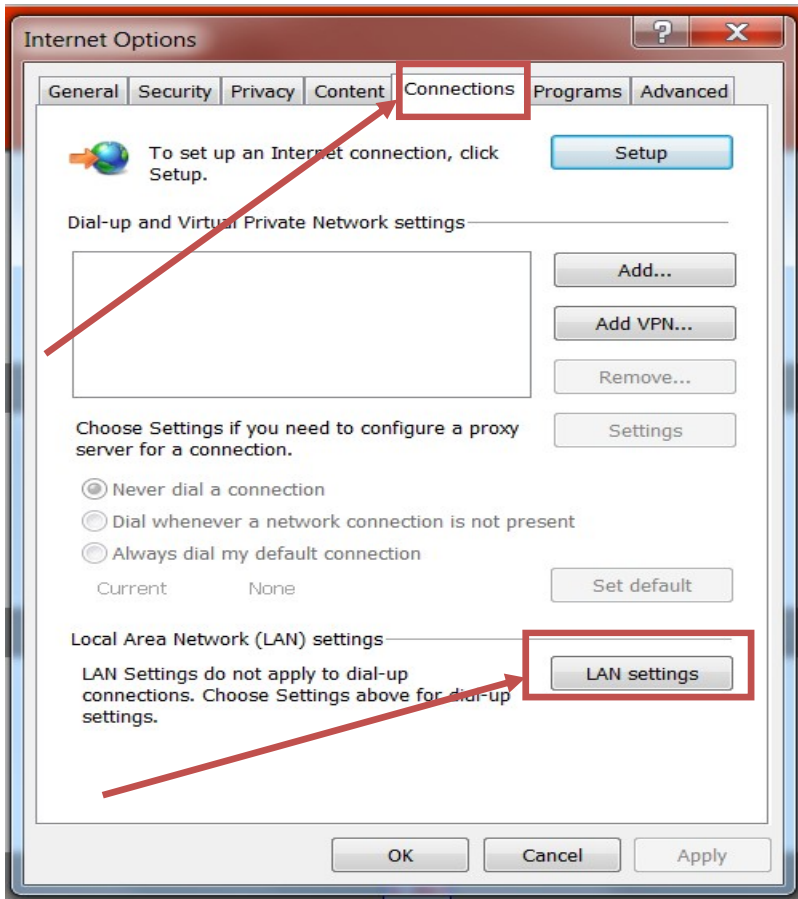
## 6. Accessing pCoWeb Web pages and clock configuration

### 6.1. Web browser configuration (Internet Explorer)

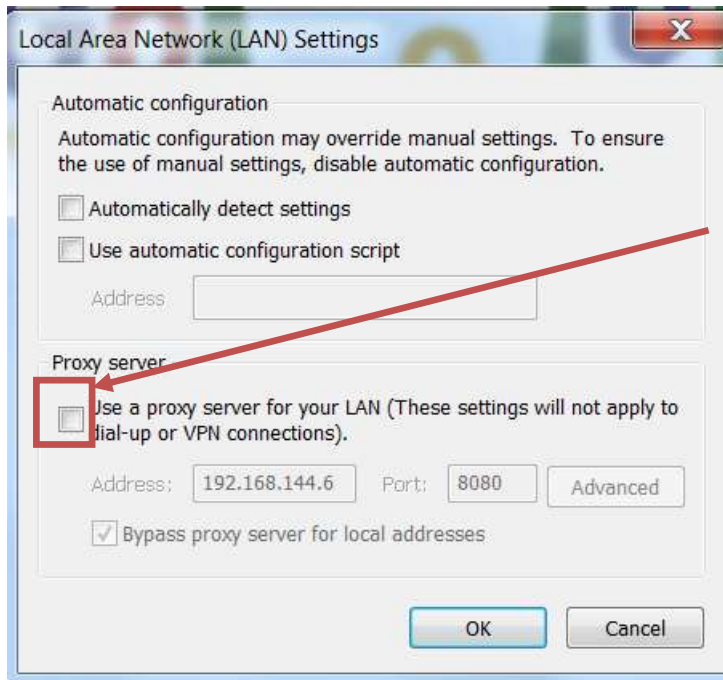
- Open Internet Explorer, click on Tools and select Internet options.



- Select "Connection" tab and click "LAN settings"



- **Disable** the "Proxy server" tick box



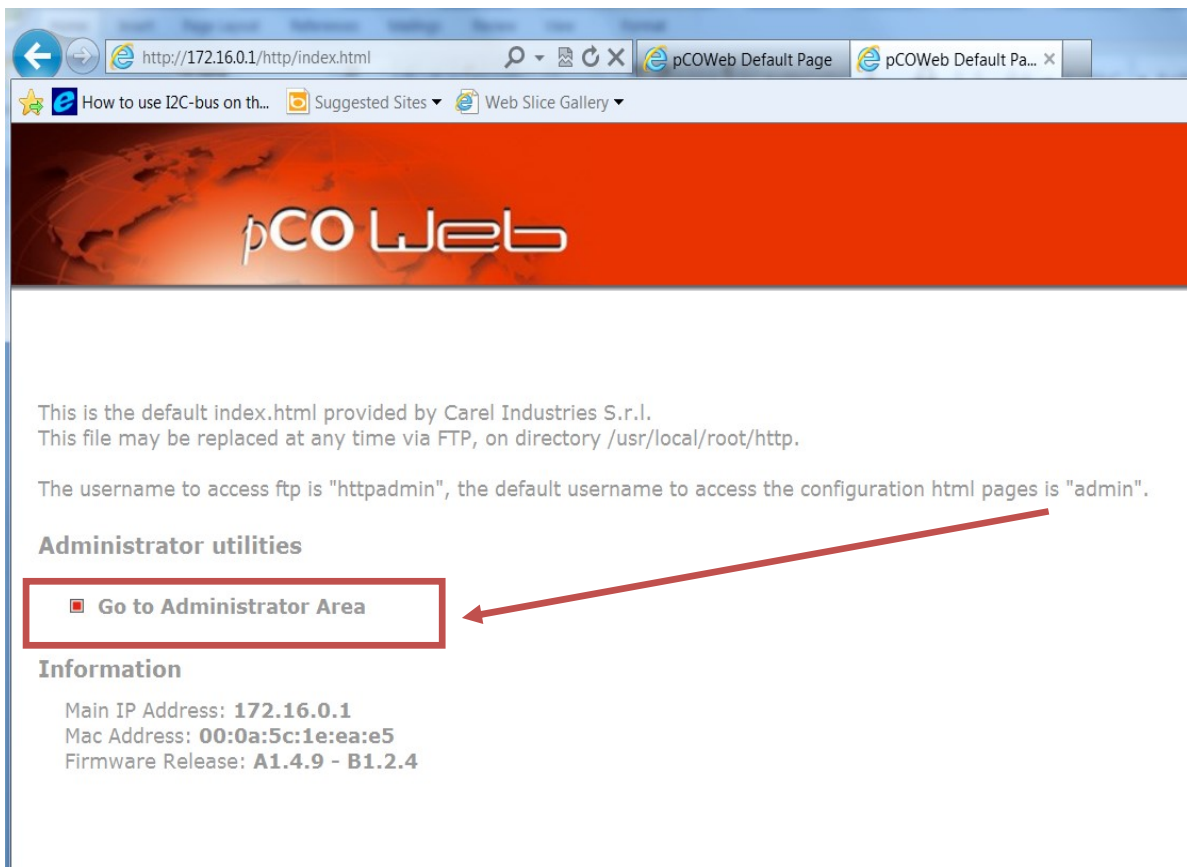
## 6.2. Opening start page

- A pCOWeb card, your PC and a UC6 controller should be configured according to clauses 2-4 of this manual.
- Type in the address space of Internet Explore the following address: 172.16.0.1 and press Enter.

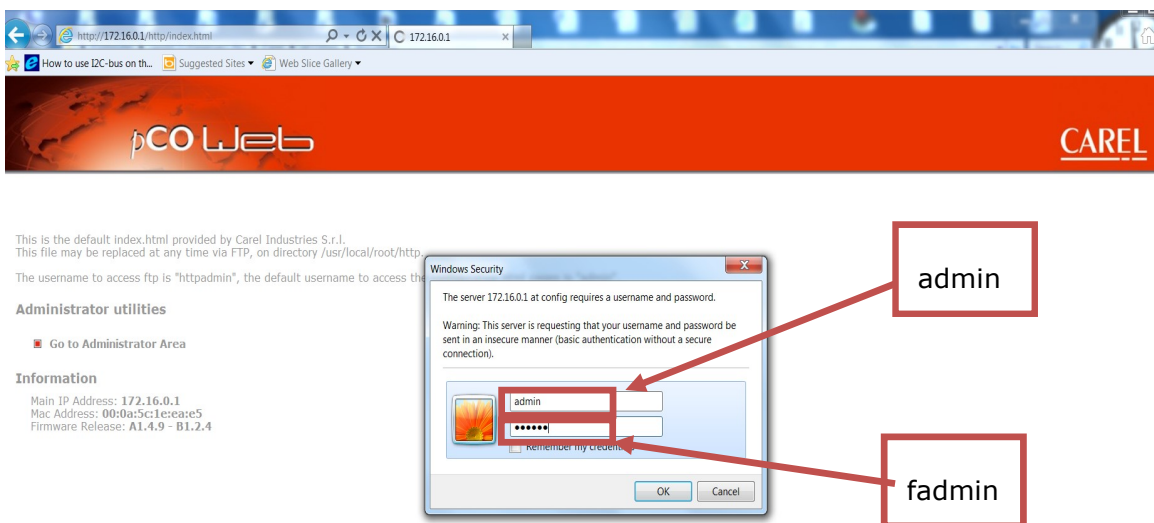


The web page shown below should open up.

- Click on "Go to Administration Area"



- Type user name: "admin" and password: "fadmin"



### 6.3. Clock configuration

- Click "Clock and Logger" tab

The screenshot shows the pCOWeb configuration interface. The left sidebar has a menu with 'Clock and Logger' highlighted. The main content area is titled 'Summary Page' and contains three data tables. A red arrow points from the 'Clock and Logger' tab in the sidebar to the 'Summary Page' header.

**Summary Page**  
 !! Data is live, it automatically updates every 5s !!  
 Double click on a value to change it <<

Cells per row: [10] [20] [30] [40] [50]

Digital Variables	
Var Idx	Value
1-20	0
21-40	0
41-60	0
61-80	0
81-100	0
101-120	0
121-140	0
141-160	0
161-180	0
181-200	0
201-207	U

Analog Variables	
Var Idx	Value
1-20	0.0
21-40	0.0
41-60	9.0
61-80	0.0
81-100	0.0
101-120	0.0
121-140	0.0
141-160	U
161-180	U
181-200	U
201-207	U

Integer Variables	
Var Idx	Value
1-20	4
21-40	0
41-60	0
61-80	0
81-100	0
101-120	0
121-140	U
141-160	U
161-180	U
181-200	U
201-207	U

Copyright © 2003-2012 by Carel Industries S.r.l., Engine (PD) - Italy. All rights reserved. Contact: [pcoweb@carel.com](mailto:pcoweb@carel.com)

- Select "Clock" page
- Set "Enable "Clock Syncer" to "Enabled"
- Set "Enable "Synchronization Type" to "Every Minute"
- Set date and time integer variables as following:

Day variable index	25
Month variable index	26
Year variable index	27
Hour variable index	24
Minute variable index	23

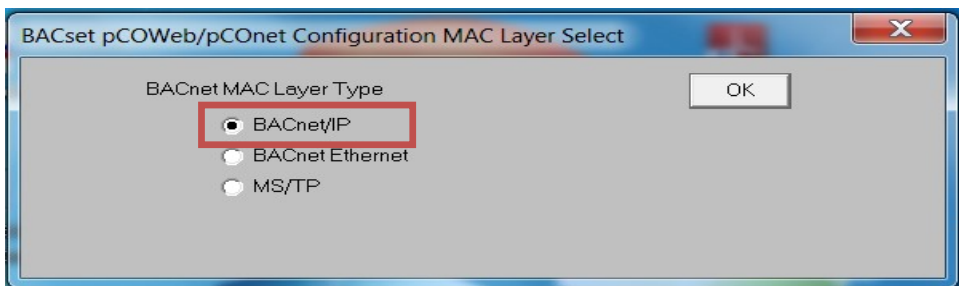
- Apply "Submit" button



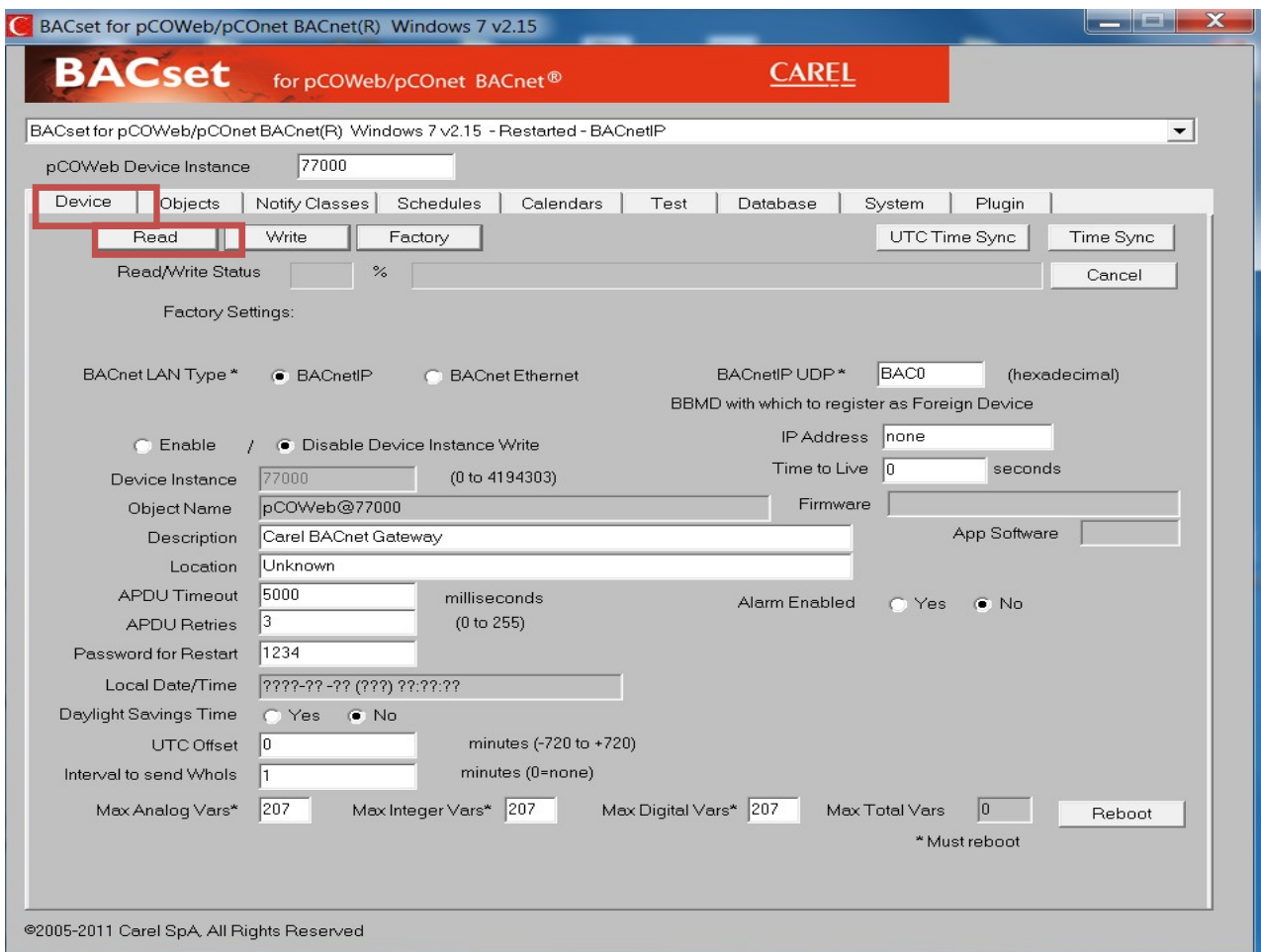
## 7. BACnet configuration and testing

### 7.1. BACnet configuration

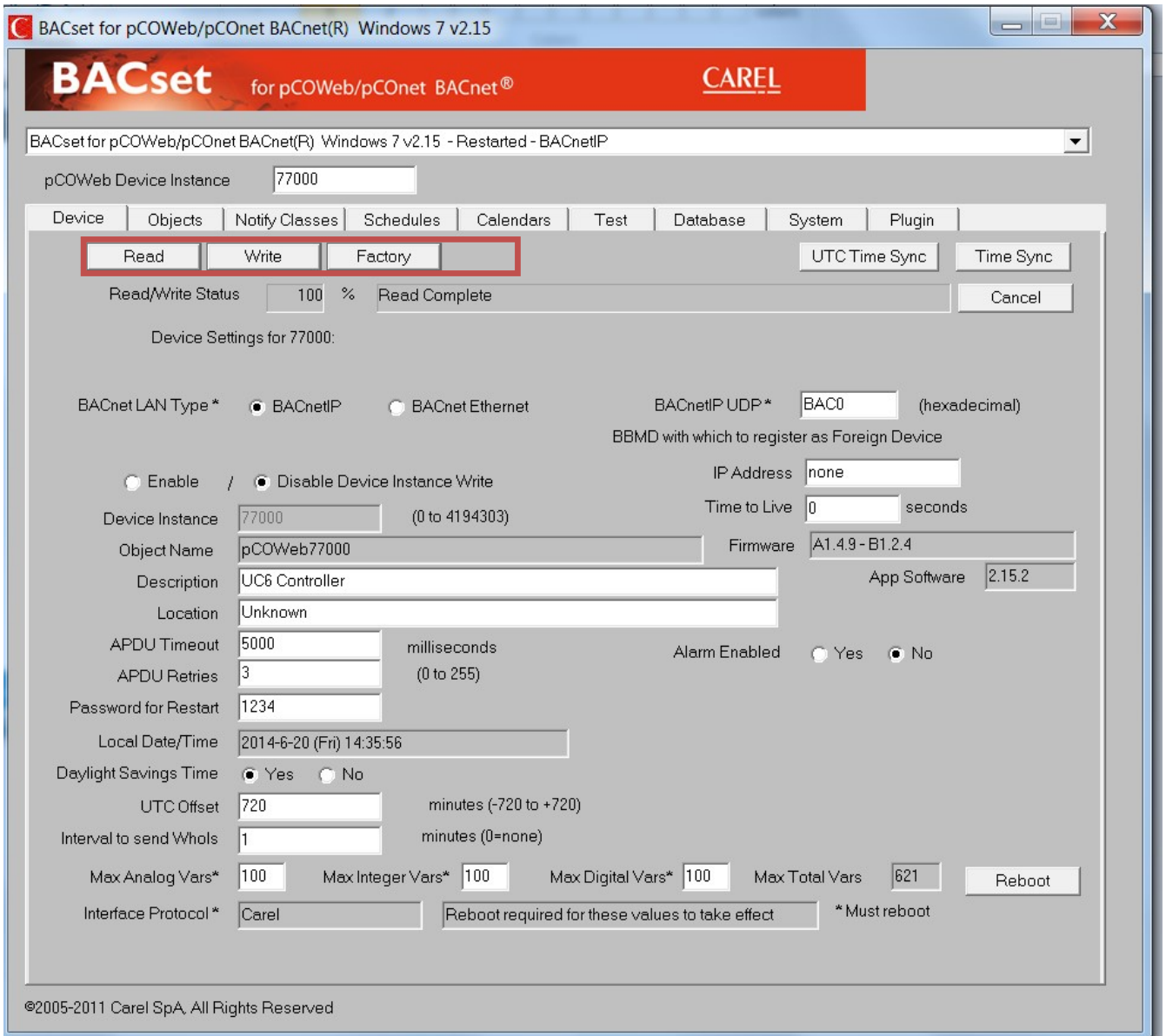
- Read BACset user guide (BACset Users Guide 215.pdf)
- Install Carel BACset program by running “InstallBACset.exe”.
- Start BACset program
- Select “BACnet/IP” and click “OK” button



- Select “Device” tab and click “Read” button.

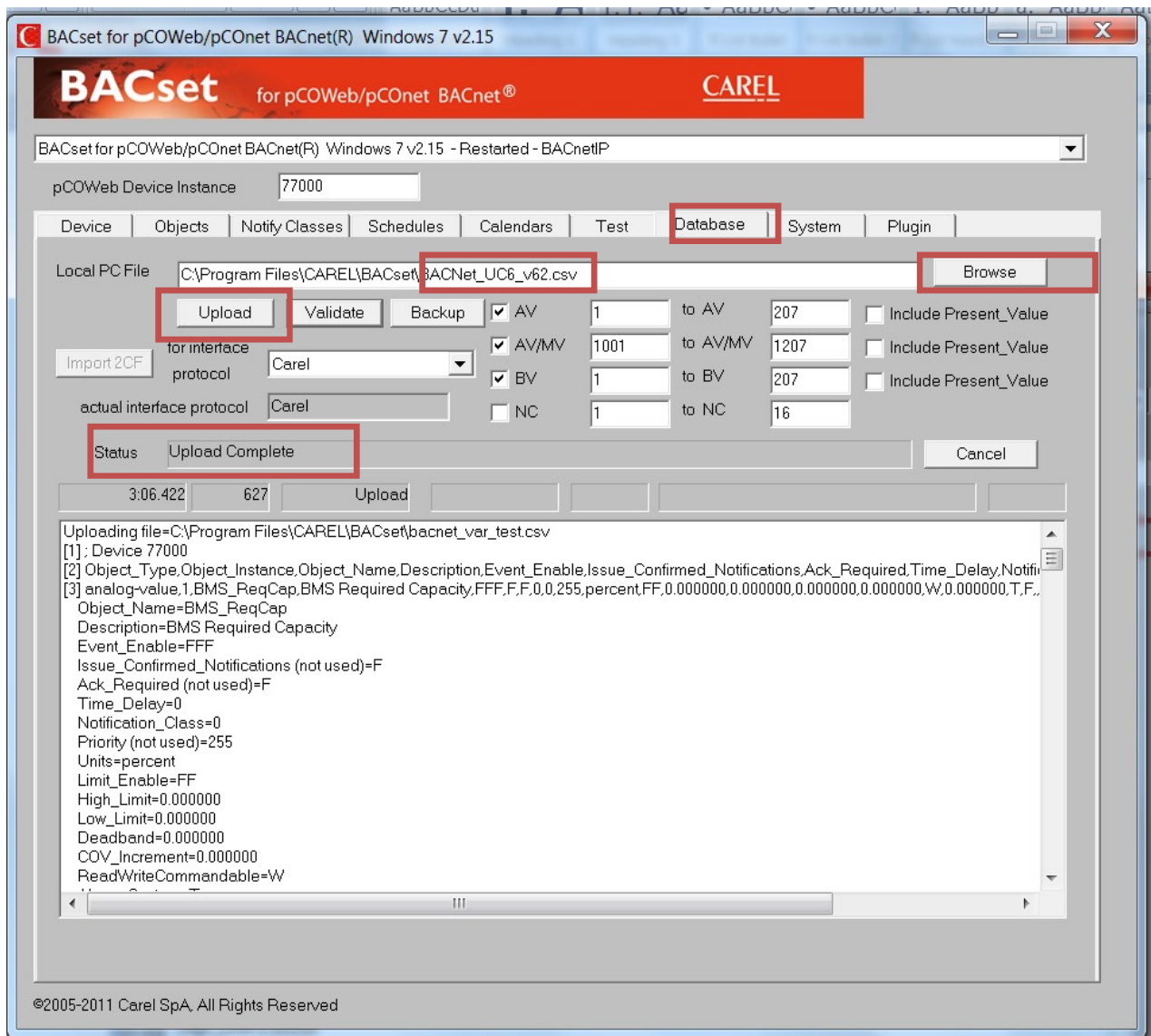


- Read operation should be successfully completed and Device object data will be displayed on the screen
- If necessary type new "Description" and "Location " and click "write" button. It will be saved with this pCOWeb card.





- Select the "Database" tab.
- Click the "Browse" button and navigate and select the BACNet\_UC6\_v62.csv file.
- Check "AV", "AV/MV" and "BV" check boxes.
- Click the "Upload" button.
- Wait until the Status field displays "Upload Complete".



## 7.2. Testing

- Select the "Database" tab.
- Check "AV", "AV/MV" and "BV" check boxes.
- Select the "ObjectID/ObjectName/Units" radio button.
- Click the "Read" button
- Compare printed results with the Temperzone BACnet object list file.

