



# OPA 465–960 RKTGH-P (ECO) Packaged Reverse Cycle R410A Air Cooled Package Installation & Maintenance

## 1. GENERAL

Temperzone OPA Outdoor Air Cooled Packaged units. Follow these instructions to ensure the optimum performance, reliability and durability. Units must be installed in accordance with all national and regional regulations and bylaws. National Health and Safety regulations must be followed to avoid personal injuries.

The appropriate local permits must be acquired and adhered to. Local regulations on maximum boundary noise need to be considered when positioning the unit.

GENERAL

## 2. INSTALLATION

Refer to dimension diagrams for minimum clearances. If multiple units are to be placed side-by-side then allow at least 2m between coil faces. (refer fig. 1)

### 2.1 Mounting

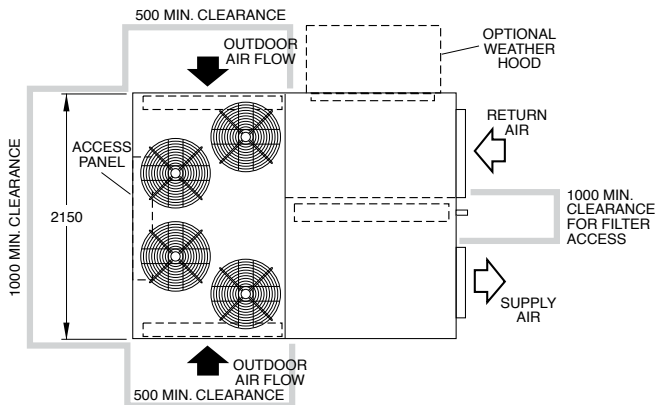


Figure 1.

The unit should be fastened to a firm flat horizontal base using the holes supplied in the mounting channels. When the unit is being installed on a roof it is recommended that the unit is installed on a substantial structure with vibration isolating springs beneath the unit. These springs are not supplied with the unit.

Flexible duct connections are recommended between the supply and return ducts and the unit.

Unit is shipped with wooden blocks installed under the compressors. Ensure these blocks are removed from the compressor feet prior to starting the unit (not required for operation).

Factory filter slides are fitted, access to the filter access door should be considered when designing return and supply air ductwork. Access to the filters can still be achieved by removing the return air access door, however it is imperative that the rubber insulating washers be refitted to the screws prior to replacing the panel.

### 2.2 Condensate Drain

The condensate drain should be 'U' trapped outside the unit. The trap should have a vertical height of at least 100 mm. The drain should have a slope of at least 1 in 50 and must not be piped to a level above the unit drain pipe. (refer fig. 2)

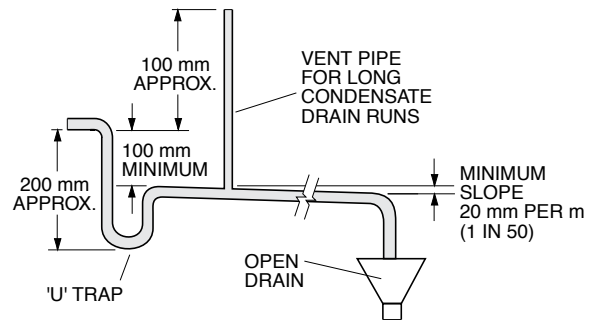


Figure 2.

INSTALLATION

### 3. REFRIGERATION SYSTEM

#### 3.1 General

The OPA 465-960 has two independent refrigeration circuits and two compressors to provide the flexibility and economy of two stage operation, i.e. utilising one or two circuits as conditions vary, plus the advantage of staggered starting, one stage being digital for improved control and system efficiency.

Each refrigeration system has been charged with HFC-410A (R410A) refrigerant; refer wiring diagram specification table for amount. ECO machines are supplied with a mini PDG service interface tool fitted for ease of service, maintenance and trouble shooting.

This charge is based on nominal capacity, nominal conditions and nominal airflow and is sufficient under these conditions to maintain a refrigerant superheat of approximately 6 Kelvin. If the unit is installed in subtropical or tropical conditions, has a high fresh air content or has been installed with maximum supply air quantity, the superheat should be checked and if found to be above 6 Kelvin, refrigerant may need to be added to the system to return the superheat to the factory required state.

These readings should be taken with each stage operating independently and after the heat space has achieved conditions. The additional charge should be recorded for future reference.

#### 3.2 Compressors

The compressors are directional scroll type. The compressor lubricant is polyolester oil (POE). Note, this oil absorbs moisture quickly if exposed to open air.

On commissioning, the compressors must be checked for correct rotation (refer Start Up Procedure). A time delay prevents simultaneous starting of the compressors.

#### 3.3 Economiser (Option) - ECO Plus Version

If the outdoor air temperature or heat content preferably, is below that of the return air the fresh air damper opens and the return air damper closes to provide the first stage of cooling. The fresh air damper should return to minimum setting and the return air damper open before the compressors are allowed to operate to provide further cooling. A low limit thermostat is fitted to prevent compressors operating with a mixed air-on coil temperature below 18°C; resets at 20°C. This is by-passed during heating mode.

### 4. WIRING

#### 4.1 Electrical Requirements

Electrical work must be done by a qualified electrician.

**DANGER LIVE ELECTRICAL CONNECTIONS. ONLY QUALIFIED PERSONS WHO ARE COMPETENTLY TRAINED SHOULD PERFORM SERVICE AND MAINTENANCE TASKS.**

The outdoor unit must be wired directly from a distribution board by means of a circuit breaker or H.R.C. fuse, and a mains isolator provided - preferably close to the unit.

**Note: DO NOT USE REWIRABLE FUSES.**

The OPA ECO is provided with a 24VAC control circuit thermostat (TZT Optional), on/off switch and/or time clock, field supplied and fitted. The control transformer 240V primary is used for countries with 230-240V power supply. Alternatively control can be via a Modbus connection.

For countries with supply voltages 200-220V, change the primary voltage on the transformer to 208V.

Standard units are suitable for use with thermostats with either manual Heat/Cool selection or automatic changeover subject to the contact ratings of the thermostats.

A 24 hour power supply to the compressor crank case heaters is required, otherwise the warranty is void.

#### 4.2 Unit Controller (UC6)

The temperzone Unit Controller 6 (UC6) is the successor to the OUC4 controller. The UC6 provides increased capability and flexibility in indoor-, outdoor- and packaged units. The complete controller combines the  $\mu$ PC controller board from Carel plus an interface board to connect temperzone standard sensors and plugs. The UC6 receives requests such as "Unit On/Off", "Start 1 or 2 compressors", "Activate HEAT (Reverse Cycle)" and transfers these requests to the outputs after enforcing safety timers. The UC6 ensures unit safety by

continuously monitoring input signals such as pressures and temperatures. Beside the normal controls and unit safety the UC6 has many other functions, for example head pressure control, capacity control, superheat control, serial communications and more.

The Unit Controller provides system protection functions such as coil frost protection, de-icing, high head pressure and low suction pressure cut-out. It also protects against rapid cycling of the compressor(s) and loss of refrigerant. The UC6 regulates the superheat of the refrigeration system by controlling the position of an electronic expansion valve (EEV). Various methods of head pressure control (or limiting) are employed in temperzone units. The particular method used varies from model to model, but is also handled by the Unit Controller. In combination, these features deliver optimised performance across a wide operating temperature range.

As a result of the UC6's control of these inter-related functions, the outdoor fans may take some time to start rotating after each compressor start. They may also run on when the compressor stops. The fans will stop during a de-ice cycle and the speed will vary either smoothly, or in steps, in order to protect against excessively low or high head pressure.

Refer to temperzone for operation & fault diagnostics information OR [www.temperzone.biz](http://www.temperzone.biz).

## 5. START UP PROCEDURE

### 5.1 Pre-Start-up

1. Leave the on/off switch in the off position and close the mains isolating switch. A four hour delay period is required to allow the crankcase heaters to drive any liquid refrigerant out of the compressor oil.
2. Check that the shipping blocks beneath each compressor have been removed and that each compressor is secure on its mounts
3. Check that all fan motors are free running.
4. Check that the thermostat is correctly wired to the unit and is set at the desired temperature.
5. Check that the air filters have been correctly installed if fitted.
6. Check air diffuser dampers are open.
7. Check and tighten all electrical connections.

### 5.2 Commissioning

Use the supplied Commissioning Sheet to help you complete the following procedure:

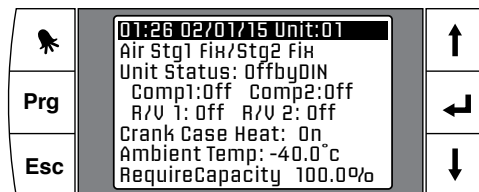
1. After the four hour delay period has crankcase heater thermostat has been reconnected.
2. Check the supply voltage between each phase and neutral.
3. Compressors fitted are directional. Check for correct rotation. If rotation is incorrect the compressor will not pump, be noisy, and will draw minimal current. To correct motor rotation, change the phasing at the main power terminal. If changing the phasing, check the indoor air fan then runs in the correct direction also.
4. Measure the current draw on each phase to the compressor motors and measure the current draw of each fan motor. Check all readings against the specified values in the wiring diagram.
5. Use the on board supplied mini PDG Service Interface Tool or Fit R410A compatible gauges and measure the suction and discharge pressures of both refrigeration circuits.
6. Check that the outdoor air fan motors are running smoothly.
7. Test the operation of the reversing valve in cooling and heating mode (refer Commissioning Sheet).
8. Check the supply air flow at each outlet after commissioning of EC fans
9. Check the tightness of all electrical connections and sign the check label.
10. Touch up any outdoor unit paintwork damage to prevent corrosion

### 5.3 Commissioning EC Plug Fans

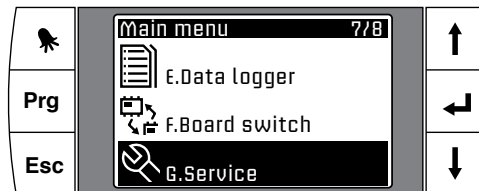
Six Keys service interface function description:

1. Alarm: Press Alarm button to access alarm operation:
  - a. View the active alarm
  - b. Logger alarm data
2. Prg. Press program button enter to main menu
3. Esc. Return to menu's previous level
4. ← Enter. Press the "Enter" key to confirm the operation
5. ↑ Press UP and ↓ DOWN key jump to Input/output page; Increase and decrease respectively the value during the configuration.

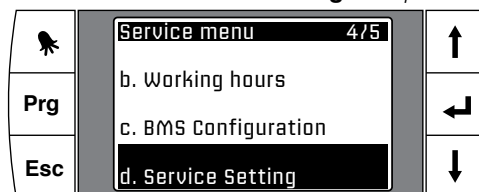
Power up UC6 and wait until service interface display reads as per below.



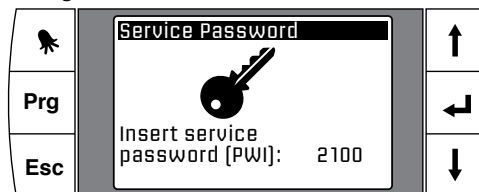
Press the PRG key and then scroll down to **service**, then press the enter key.



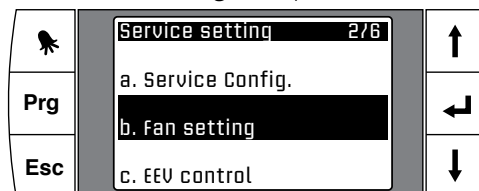
Scroll down to **Service Setting** then press the enter key.



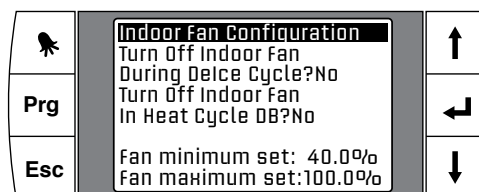
Enter the service access password "2100" by scrolling one digit at a time, pressing the enter key to progress through the numbers.



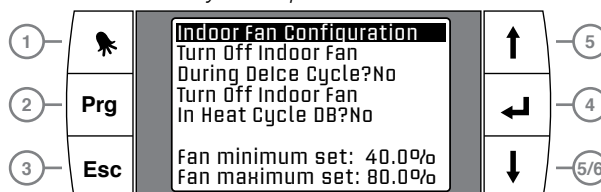
After successfully entering the correct password, scroll down to **Fan setting**, then press the enter key.



Press the enter key to scroll the cursor down to **Fan maximum set**:



Press the cursors up or down to adjust the fan maximum setting to the % you require. Refer to published fan curve to determine your required %.



Once adjusted press the enter key to confirm settings. Press the ESC key to scroll back to the main menu.

## 6. OPERATION

### 6.1 Remote on/off

The remote on/off function can be enabled or disabled by using a UC6 service tool.

When the function is enabled the remote on/off signal must connect to input **DI7**, signal return is **DIC1**. The remote on/off signal must be an external voltage free switched relay contact.

The unit is active when DI7 is connected to DIC1.

### 6.2 Variable duty units

The UC6 can control a unit where one of the two compressors is a variable speed compressor or a digital scroll compressor. Temperzone pre-configures the unit to the correct compressor type; a UC6 service tool is required if the compressor type configuration must be changed.

The capacity input signal must connect to input **CS** (0-1V, duty 10% per 0.1V).

For digital scroll compressors the capacity output signal (compressor modulating valve control signal) is on output **CCS**.

The minimum compressor duty is:

20 to 30% for a variable speed compressor  
(depends on compressor model)

16% for a digital scroll compressor

When a capacity signal is present on input CS that is lower than the minimum duty (for example 0.0V) then the compressor will continue to operate on minimum duty. Safety functions may place further restrictions on the minimum duty and may act at any operating condition.

### 6.3 High pressure protection (HP)

If high pressure transducers are connected to inputs **HP1** and **HP2** then a compressor is switched off when the discharge line pressure reading exceeds 42.0bar.

Instead of high pressure transducers some systems may be fitted with high pressure switches. These also connect to inputs **HP1** and **HP2**. When a high pressure switch activates (electrical circuit opens) the compressor is stopped.

Similarly, if the condensing temperature reported by an outdoor coil temperature sensor (connected to **TS1** and **TS2**) reports a coil temperature above +66°C (cooling mode) the compressor is switched off.

The UC6 will automatically reduce capacity of a digital scroll compressor before the maximum value of 42bar / 66°C is reached.

When a compressor is stopped due to high pressure it is held off for a period of 3 minutes, after which it is allowed to restart (provided pressure has fallen well below the maximum).

If three consecutive trips occur then the unit will be "locked out". The trip counter is reset to 0 when there has been no compressor run request for longer than 60 minutes.

**Display indication when protection is active - number 4 (flashing)**

### 6.4 Loss of refrigerant protection (LOR)

When a compressor is running the UC6 continuously monitors the various temperatures. The controller software applies logic that enables it to determine whether the system has an adequate amount of refrigerant. Signals used for this check are mid-coil

temperatures (**TS1**, **TS2**), suction temperatures (**ST1**, **ST2**) and discharge line pressures (**HP1** and **HP2**, if present).

The check is not made during the first 5 minutes after a compressor is started to allow pressures and temperatures to settle.

If the compressor is a variable speed type or a digital scroll type then the check is made only when the capacity is at 100%.

When a compressor is stopped due to loss of refrigerant it is held off for a period of 3 minutes, after which it is allowed to restart.

If three consecutive trips occur then the unit will be "locked out". The trip counter is reset to 0 when there has been no compressor run request for longer than 60 minutes.

**Display indication when protection is active - number 3 (flashing)**

### 6.5 Indoor coil frost protection (FROST)

When the unit is cooling the evaporating temperature in the indoor coil must remain above -10°C (adjustable from -10°C to -2°C by using a UC6 service tool). If this temperature falls below the threshold then some amount of ice (frost) is likely to have formed on the indoor coil.

When indoor coil frost protection is activated the compressor is stopped for 15 minutes, after which it is allowed to restart.

If three consecutive trips occur then the unit will be "locked out". The trip counter is reset to 0 when there has been no compressor run request for longer than 60 minutes.

**Display indication when protection is active - number 7 (flashing)**

### 6.6 High discharge line temperature protection (HDT)

The controller monitors the discharge line temperature (inputs **DT1**, **DT2**) and should it rise above 110°C the compressor will be stopped.

When high temperature protection is activated the compressor is stopped for at least 3 minutes. The compressor is allowed to restart after 3 minutes provided that the discharge line temperature has fallen to below 100°C.

If three consecutive trips occur then the unit will be "locked out". The trip counter is reset to 0 when there has been no compressor run request for longer than 60 minutes.

Units with a variable compressor or digital scroll compressor will automatically reduce capacity before the discharge temperature rises close to the threshold.

**Display indication when protection is active - number 9 (flashing)**

### 6.7 Compressor lock-out

Certain faults (as outlined in the preceding paragraphs) can cause the unit to be "locked out" if they occur three consecutive times while the compressor-run request has remained active. When a unit is locked out the compressor is not allowed to start until the lock-out is manually reset. Lock-out protects the unit from repeatedly starting the compressor when a serious fault exists that requires the attention of a service technician.

When a unit is locked out the alarm relay output (**NO7**, **NC7**) will be active.

A unit that is locked out can be reset by either of the following two methods:

1. Remove mains power from the unit for at least 3 seconds, then restore power.
2. Use a UC6 service tool service tool to manually reset the lock-out condition.

***Display indication when protection is active - letter F (flashing)***

#### **6.8 Sensor alarm**

If the signal of a temperature sensor or pressure transducer is out of normal operating range the UC6 will generate an alarm. The sensor may be faulty, disconnected or short circuit.

***Display indication temperature sensor alarm - number 5 (flashing)***

***Display indication pressure transducer alarm - number 6 (flashing)***

#### **6.9 Loss of RS485 communications alarm**

If the UC6 does not receive correct responses from a device that connects via the RS485 Modbus serial communications port then an alarm is generated. Examples of such devices are: a TZT-100 thermostat, a Carel Power+ inverter.

***Display indication for communications fault - letter C (flashing)***

### **7. TEST MODE**

Test mode can only be activated when both compressors are OFF.

To start test mode press and hold down the push button on the lower board between 1 and 5 seconds.

In test mode each output is activated for 5 to 10 seconds, one output at a time. When test mode completes the unit automatically returns to normal operation.

***Display indication during test mode - letter A***

### **8. COMMISSIONING MODE**

To start commissioning mode press and hold down the push button on the lower board between 10 and 15 seconds.

In commissioning mode all time delays are reduced to 1/10th their standard value to enable rapid diagnostic testing.

Commissioning mode automatically completes after 30 minutes and the unit will return to normal operation. Cycling mains power off and on again also ends commissioning mode.

***Display indication during commissioning mode - letter C***

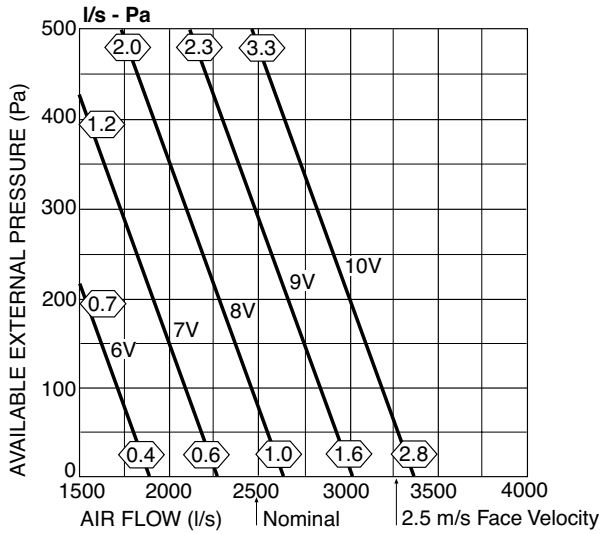
**9. PERFORMANCE DATA**

**Air Handling**

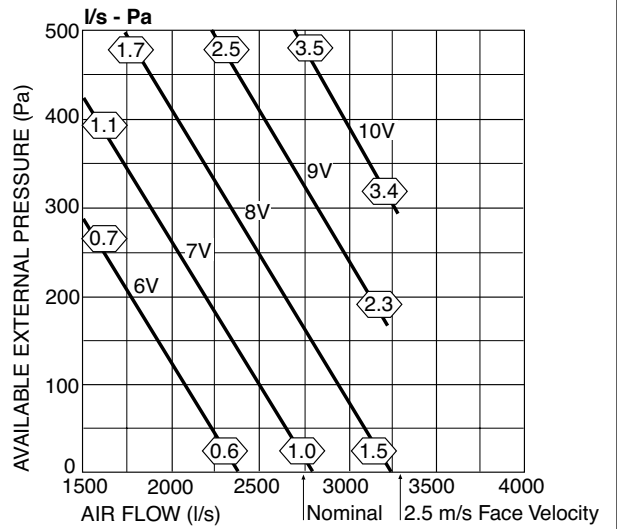
**Note:** Airflows are for a dry coil. Reduce airflow by 5% in high moisture removal conditions. In a free blow or low resistance application, beware of exceeding indoor fan motor's full load amp limit (refer back page). As filters are optional, the fan air flows given are for units installed without filters.

⬡ kilowatts

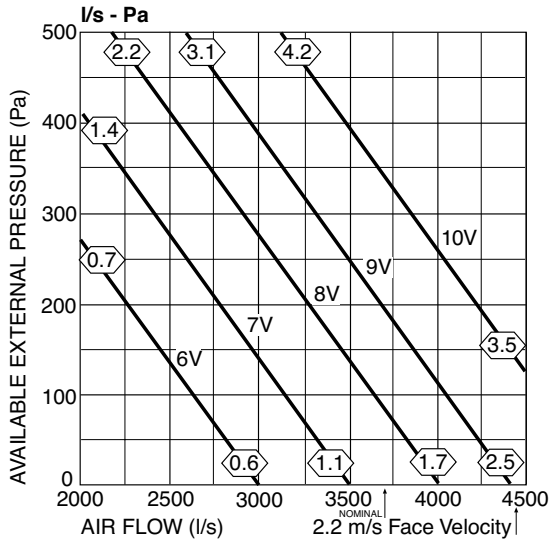
**OPA 465-P**



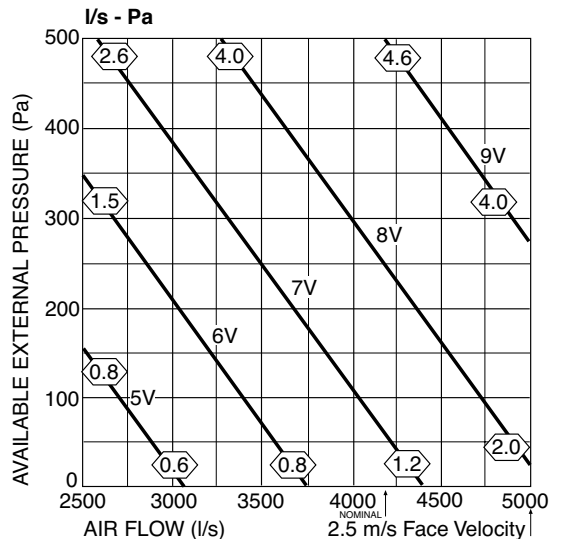
**OPA 550-P**



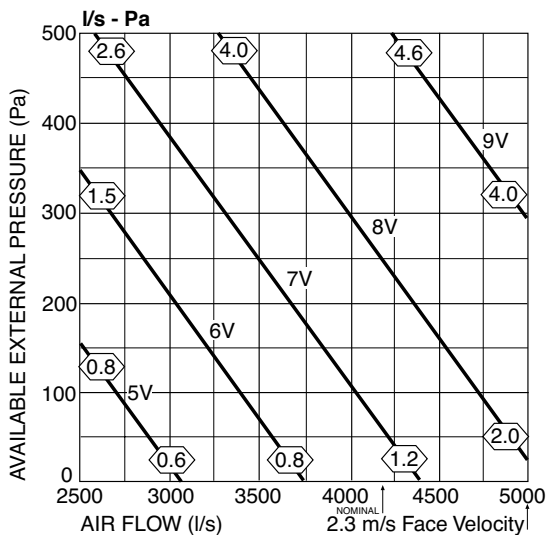
**OPA 705-P**



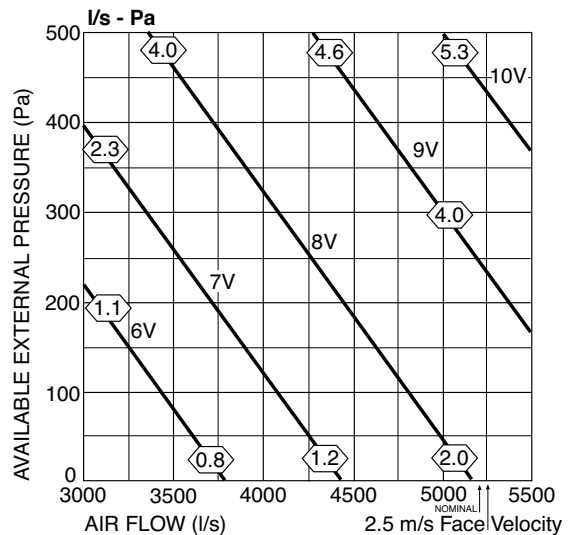
**OPA 800-P**



**OPA 850-P**



**OPA 960-P**

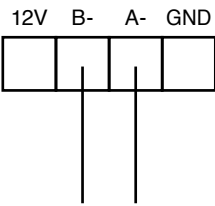


# 10. CONTROLS

## 10.1 MOD BUS Connections

The bridging wires should be screwed to terminals A and B separately and should be long enough to be used as the bridging cables between the 24 V hot terminal and compressors 1 and 2. If in the event a TZZ is not used, they can stay there and not be of anyone's concern. If on the other hand a TZZ with Modbus is used, the installing contractor will see the label and wires and then wire them to the 24 volt terminals.

### RS485 Terminal on UC6



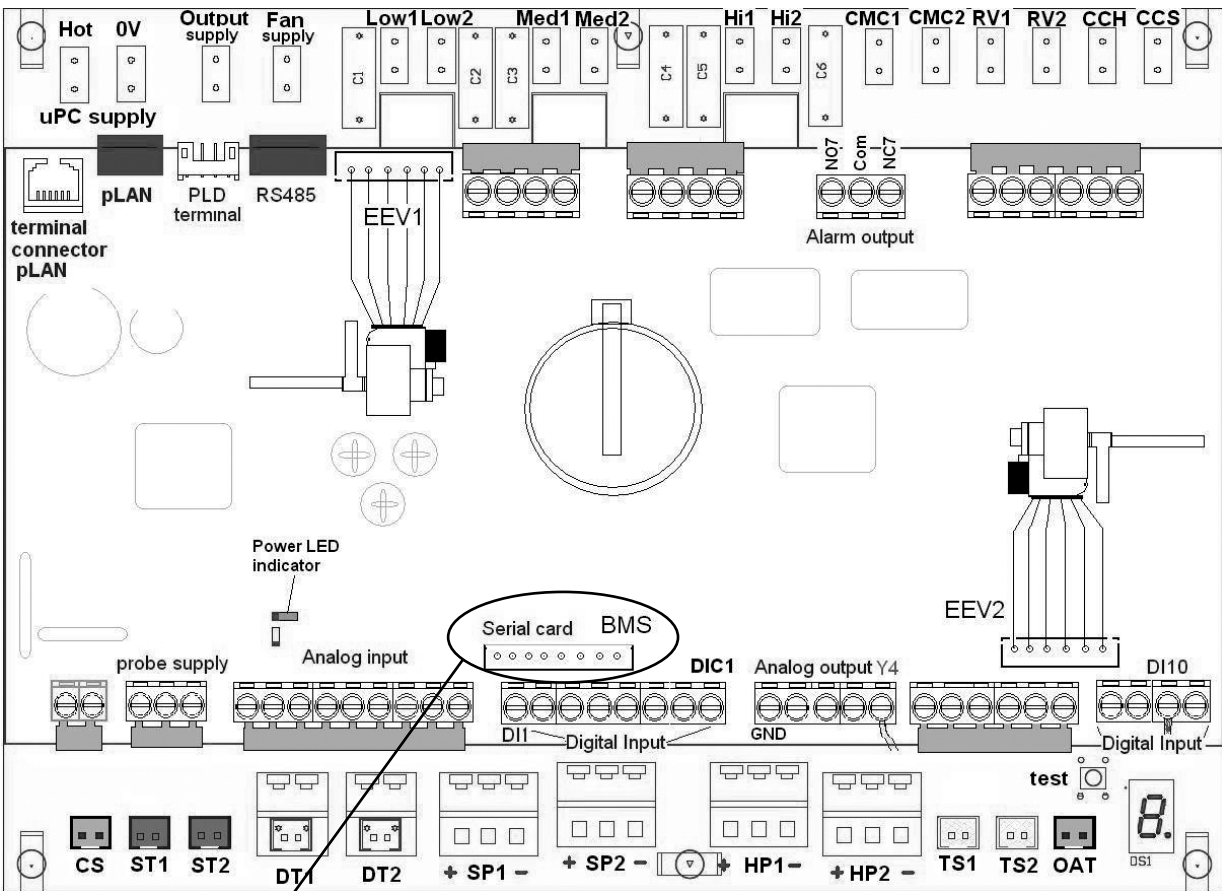
### TZZ Controller Installation

If a TZZ100 controller is used in Modbus format these cables should be wired to the following terminals on the low voltage input terminal strip

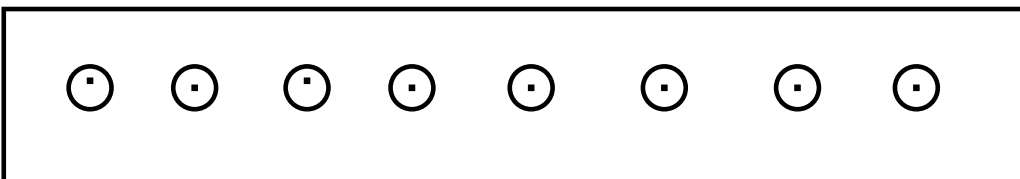
- 24V Hot terminal to Comp 1
- Comp 1 terminal to Comp 2 terminal

Please disregard this instruction if non Modbus controllers are used.

### Lower Board Connections



### Serial Card BMS





## 11. COMMUNICATION PORTS

### 11.1 Several types of communication ports are available on the UC6.

COMM PORT	Signal	Notes
RS485 <sup>1</sup>	MODBUS / CAREL RS485	Thermostat, Inverter
pLAN	UC6 service tool	Programmable graphic display
PLD <sup>1</sup>	Fieldbus (RS485 or TLAN)	Supervisory System
BMS <sup>2</sup>	RS485 MODBUS (BACnet or Ethernet optional)	Available only with additional plug-in module connected to the "BMS" connector (adjacent to the Digital Input connector).

**Note 1:** Connectors to the UC6 show R+/T+ for signal A, R-/T- for signal B.

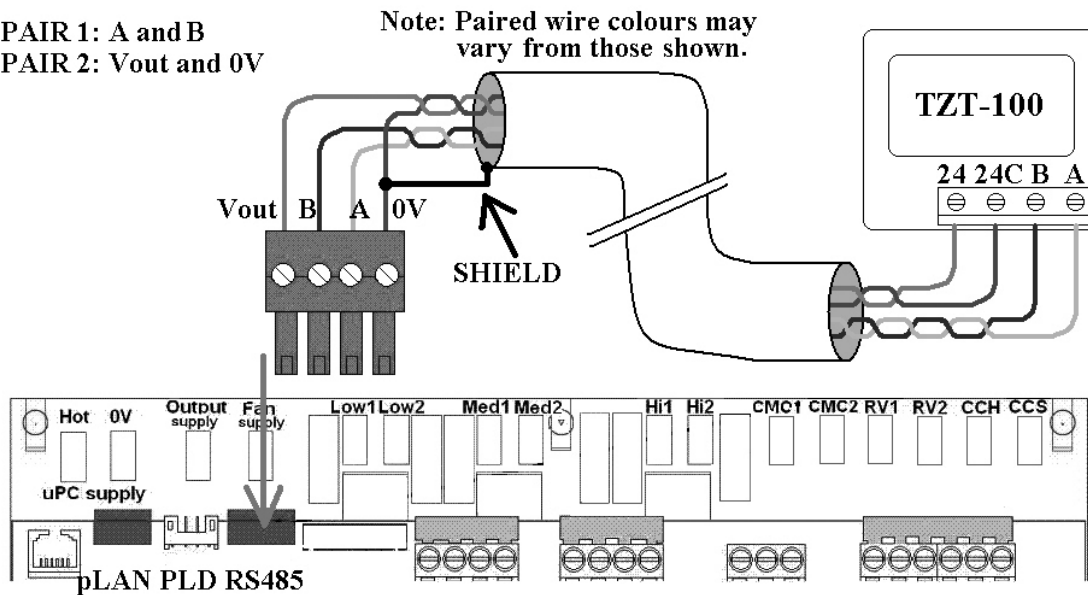
**Note 2:** Current software supports only BMS via RS485 MODBUS. BACnet or Ethernet options can be made available on request.

### 11.2 Temperzone TZT-100 thermostat connection

The UC6 can connect directly to the temperzone TZT-100 thermostat using a shielded cable with two twisted pair wires suitable for RS85 serial communications. The drawing below shows connection details.

PAIR 1: A and B

PAIR 2: Vout and 0V



## 12. MAINTENANCE

WARNING HAZARDOUS VOLTAGE. ENSURE ALL POWER SUPPLIES ARE ISOLATED BEFORE PERFORMING MAINTENANCE. FAILURE TO ISOLATE POWER CAN LEAD TO SERIOUS INJURY.

### 12.1 Monthly

1. Check air filters, if fitted, and vacuum or wash clean as necessary.
2. Check condensate drain for free drainage.
3. Check compressor compartment for oil stains indicating refrigerant leaks.
4. Check system operating pressures and history using PDG mini service interface tool fitted to all ECO machines

### 12.2 Three Monthly (or every 1200 hrs of operation)

Check the indoor unit's indoor EC motor and plug fan operation and adjust if necessary, using PDG mini service interface tool fitted to all ECO machines.

### 12.3 Six Monthly

1. Check the tightness of electrical connections.
2. Check the tightness of all fans, motor mountings
3. Check suction and discharge operating pressures using PDG mini service interface tool fitted to all ECO machines

4. Check and or Replace indoor air filters
5. Check condensate drain for free drainage.

### 12.4 Yearly

1. Check all refrigerant piping for chafing and vibration.
2. Check the operation of electric heaters, if fitted
3. Check air supply at all diffusers
4. Check for excessive noise and vibration and correct as necessary.
5. Check for insulation and duct damage and repair as necessary.
6. Check system operating pressures and history using PDG mini service interface tool fitted to all ECO machines
7. Remove lint and dust accumulation from outdoor coil fins with soft brush or low pressure water spray.
8. Touch up any paintwork damage to prevent corrosion.

NOTE: The manufacturer reserves the right to make changes in specifications at any time without notice or obligation. Certified data is available on request.



## 13. TROUBLE SHOOTING

### 13.1 Room temperature varies significantly from its setting

- Unit may have been incorrectly sized for the building.
- Drafts from wrongly placed supply air diffusers or from the back of the wall plaque could be affecting the temperature sensor built into the wall plaque.
- Poor air circulation in the room can cause incorrect temperature readings.

### 13.2 Air conditioner does not seem to deliver the heating when most needed

- Heating capacity at design conditions may be incorrect. As the outside temperature falls, heat losses through the walls, floor and ceiling increase.
- Check the unit's brochure for information on the minimum/ maximum operating temperatures.

### 13.3 When heating, units have de-icing cycles built in to remove ice on the outdoor coil.

- This usually means reversing the cycle for a few minutes during which time there is no heating and in fact a little cooling can occur.

### 13.4 In a new building, why does it take some days before the air conditioning heat pump unit seems to work properly

- Many new buildings, especially a commercial

buildings, have a large amount of concrete and other structural materials that are generally cold and full of moisture. This is most evident in the winter when trying to heat the building from scratch.

### 13.5 Unit is leaking water

- Check the drain trap/vent/slope before moving on to
- Water carry-over : Reduce the maximum fan speed to the factory default setting.

### 13.6 Air conditioner runs excessively – the temperature remains too hot in summer or too cold in winter.

- Windows or doors may be opened to non conditioned areas.
- Keep doors to unconditioned areas closed.
- Leaves, papers or other items blocking air flow over the outdoor unit coil.
- Location of wall controller or remote temperature sensor is incorrect.
- Check for leaks in supply or return air ductwork.

### 13.7 Outdoor unit displays an error code:

- Refer to UC6 Controller label on the unit for operation & fault diagnostics information; model search 'UC6 - [www.temperzone.biz](http://www.temperzone.biz)

## 14. WARRANTY

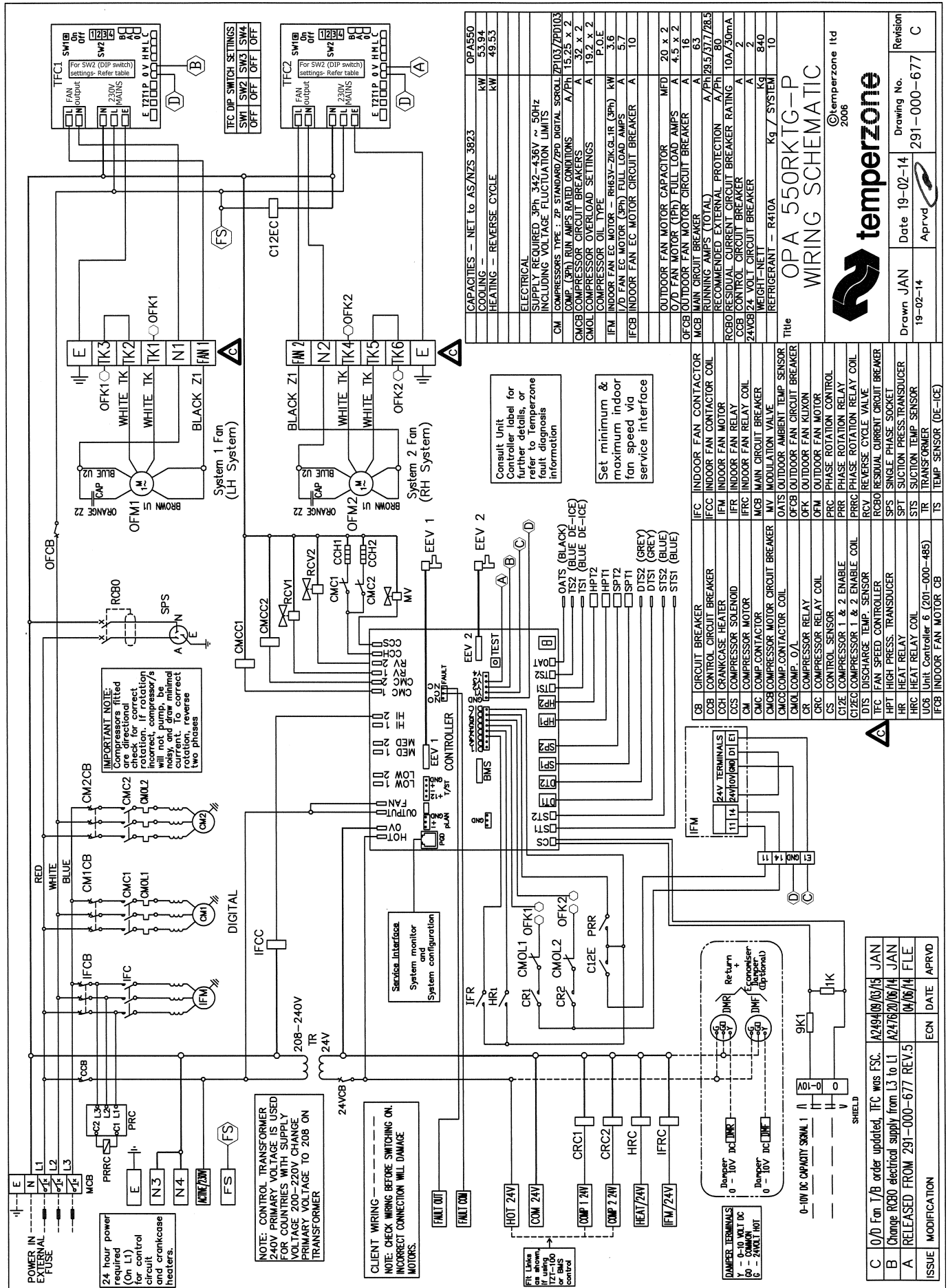
Please refer to the separate warranty document supplied with the unit, or visit [www.temperzone.biz](http://www.temperzone.biz) for details.

warranty@temperzone.com.au

spares@temperzone.com.au

Australia: 1800 21 1800





OPAS50	
COOLING -	KW 53.94
HEATING - REVERSE CYCLE	KW 49.53
ELECTRICAL	
SUPPLY REQUIRED 3Ph 342-436V ~ 50Hz	
INCLUDING VOLTAGE FLUCTUATION LIMITS	
CM COMPRESSORS TYPE : 2P STANDARD 2PD DIGITAL SCROLL	7P103/2PD103
COMP (3Ph) RUN AMPS RATED CONDITIONS	A/Ph 15.25 x 2
CMCB COMPRESSOR CIRCUIT BREAKERS	A 3.2 x 2
CMOL COMPRESSOR OVERLOAD SETTINGS	A 19.2 x 2
COMPRESSOR OIL TYPE	P.O.E
IFM INDOOR FAN EC MOTOR (3Ph)	KW 3.6
1/2D FAN EC MOTOR (3Ph) FULL LOAD AMPS	A 5.7
IFCB INDOOR FAN EC MOTOR CIRCUIT BREAKER	A 10
OUTDOOR FAN MOTOR CAPACITOR	MFD 20 x 2
OUTDOOR FAN MOTOR (1Ph) FULL LOAD AMPS	A 4.3 x 2
OUTDOOR FAN MOTOR CIRCUIT BREAKER	A 6
MCB MAIN CIRCUIT BREAKER	A 63
RUNNING AMPS (TOTAL)	A/Ph 29.5/37/28.5
RECOMMENDED EXTERNAL PROTECTION	A/Ph 30
RCBO RESIDUAL CURRENT CIRCUIT BREAKER RATING A	10A/20mA
CCB CONTROL CIRCUIT BREAKER	A 2
24VCB 24 VOLT CIRCUIT BREAKER	Kg 840
WEIGHT-NET	Kg 840
REFRIGERANT - R410A	kg / SYSTEM 10

Title  
**OPA 550RKTG-P**  
**WIRING SCHEMATIC**

©temperzone ltd  
 2006

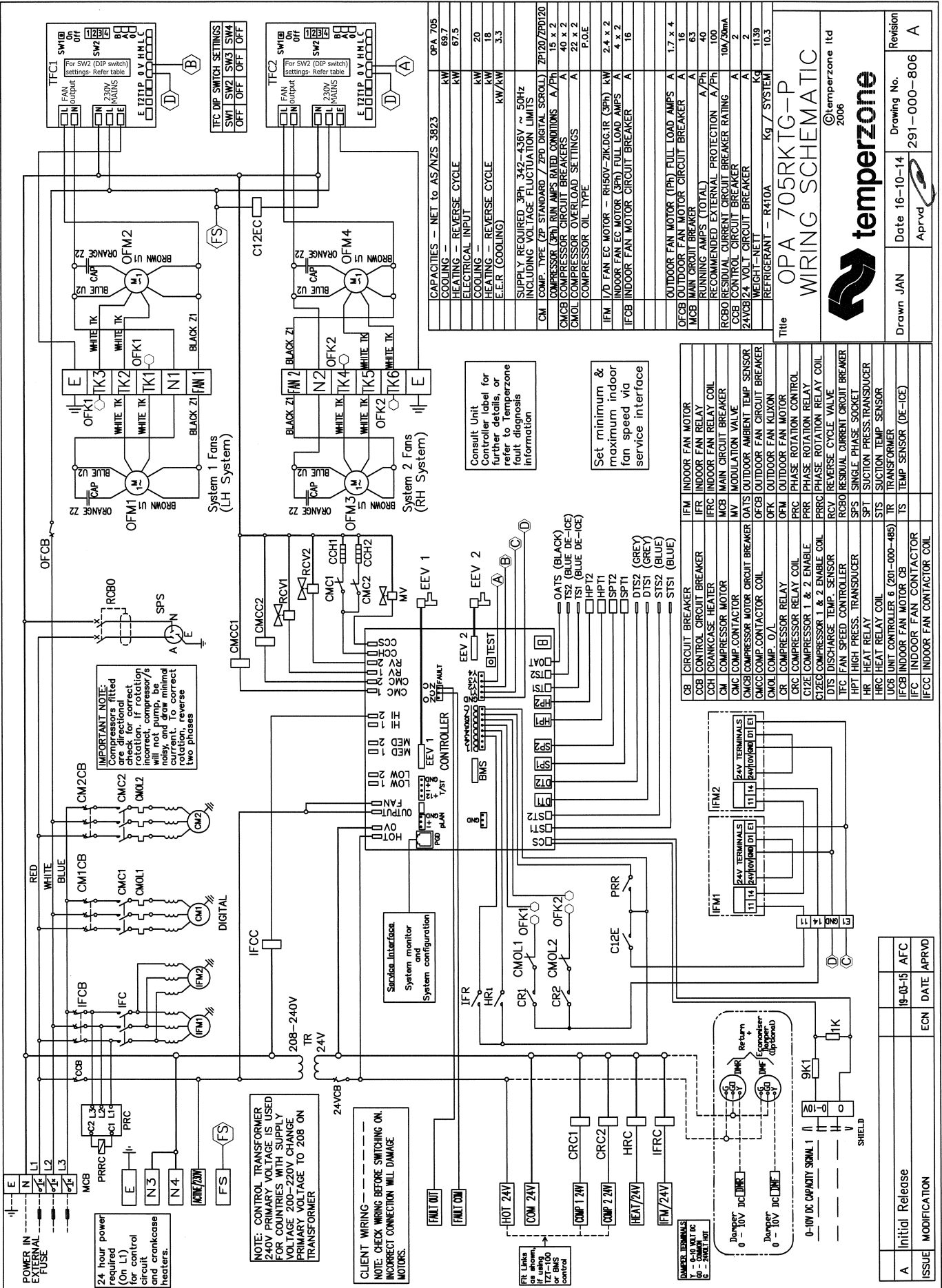
Drawn JAN 19-02-14  
 Date 19-02-14  
 Aprvd [Signature]  
 Drawing No. 291-000-677  
 Revision C

IFC	INDOOR FAN CONTACTOR
IFCC	INDOOR FAN CONTACTOR COIL
IFM	INDOOR FAN MOTOR
IFR	INDOOR FAN RELAY
IFRC	INDOOR FAN RELAY COIL
CMC	COMP. CONTACTOR
CMCB	COMP. CONTACTOR CIRCUIT BREAKER
CMCC	COMP. CONTACTOR COIL
CR	COMPRESSOR RELAY
CRS	COMPRESSOR RELAY COIL
C12E	CONTROL SENSOR
C12EC	CONTROL SENSOR 1 & 2 ENABLE COIL
DTS	DISCHARGE TEMP. SENSOR
TFC	FAN SPEED CONTROLLER
HPT	HIGH PRESS. TRANSDUCER
HRC	HEAT RELAY
HRC	HEAT RELAY COIL
UCB	Unit Controller 6 (201-000-485)
IFCB	INDOOR FAN MOTOR CB
IFCC	CIRCUIT BREAKER
CCB	CIRCUIT BREAKER
CCH	CRANKCASE HEATER
CCS	COMPRESSOR SOLENOID
CM	COMPRESSOR MOTOR
CMC	COMP. CONTACTOR
CMCC	COMP. CONTACTOR COIL
CMCB	COMP. CONTACTOR CIRCUIT BREAKER
CMCCOMP	COMP. CONTACTOR COIL
CR	COMPRESSOR RELAY
CRS	COMPRESSOR RELAY COIL
C12E	CONTROL SENSOR
C12EC	CONTROL SENSOR 1 & 2 ENABLE COIL
DTS	DISCHARGE TEMP. SENSOR
TFC	FAN SPEED CONTROLLER
HPT	HIGH PRESS. TRANSDUCER
HRC	HEAT RELAY
HRC	HEAT RELAY COIL
UCB	Unit Controller 6 (201-000-485)
IFCB	INDOOR FAN MOTOR CB

CB	CIRCUIT BREAKER
CCB	CIRCUIT BREAKER
CCH	CRANKCASE HEATER
CCS	COMPRESSOR SOLENOID
CM	COMPRESSOR MOTOR
CMC	COMP. CONTACTOR
CMCC	COMP. CONTACTOR COIL
CMCB	COMP. CONTACTOR CIRCUIT BREAKER
CMCCOMP	COMP. CONTACTOR COIL
CR	COMPRESSOR RELAY
CRS	COMPRESSOR RELAY COIL
C12E	CONTROL SENSOR
C12EC	CONTROL SENSOR 1 & 2 ENABLE COIL
DTS	DISCHARGE TEMP. SENSOR
TFC	FAN SPEED CONTROLLER
HPT	HIGH PRESS. TRANSDUCER
HRC	HEAT RELAY
HRC	HEAT RELAY COIL
UCB	Unit Controller 6 (201-000-485)
IFCB	INDOOR FAN MOTOR CB

C	O/D Fan T/B order updated, IFC was FSC.	A/2494/09/05/14	JAN
B	Change RCBO electrical supply from L3 to L1	A/2476/20/06/14	JAN
A	RELEASED FROM 291-000-677 REV.5	09/06/14	FLE
ISSUE	MODIFICATION	ECN	DATE
		APRVD	

OPA 705RKTG-P



OPA 705	69.7
COOLING - REVERSE CYCLE	KW
HEATING - REVERSE CYCLE	67.5
ELECTRICAL INPUT	
COOLING -	KW
HEATING -	20
E.E.R. (COOLING)	KW/AW
E.E.R. (HEATING)	18
E.E.R. (COMBINATION)	3.3
SUPPLY REQUIRED 3Ph 342-436V ~ 50Hz	
INCLUDING VOLTAGE FLUCTUATION LIMITS	
COMP. TYPE (ZP STANDARD / ZPD DIGITAL SCROLL)	ZP120/ZPD120
COMPRESSOR (3Ph) RIN AMPS RATED CONDITIONS	A/Ph
CMCB COMPRESSOR CIRCUIT BREAKERS	15 x 2
CMOL COMPRESSOR OVERLOAD SETTINGS	A
COMPRESSOR OIL TYPE	22 x 2
P.O.E.	
IFM 1/0 FAN EC MOTOR - RH50V-ZIK.DG.TR (3Ph)	KW
INDOOR FAN EC MOTOR (3Ph) FULL LOAD AMPS	2.4 x 2
IFCB INDOOR FAN MOTOR CIRCUIT BREAKER	A
16	
OUTDOOR FAN MOTOR (1Ph) FULL LOAD AMPS	A
1.7 x 4	
OFCEB OUTDOOR FAN MOTOR CIRCUIT BREAKER	A
16	
MCB MAIN CIRCUIT BREAKER	A
63	
RUNNING AMPS (TOTAL)	A/Ph
40	
RECOMMENDED EXTERNAL PROTECTION	A/Ph
100	
ROBOR RESIDUAL CURRENT CIRCUIT BREAKER RATING	A
10A/30mA	
CCB CONTROL CIRCUIT BREAKER	A
2	
Z4VCEB 24VDC CIRCUIT BREAKER	A
2	
WEIGHT-NET	Kg
10.9	
REFRIGERANT - R410A	Kg / SYSTEM
10.3	

Title: OPA 705RKTG-P  
WIRING SCHEMATIC

©temperzone Ltd  
2006

Drawn	JAN	Date	16-10-14	Revision	A
Aprvd				Drawing No.	291-000-806



**IMPORTANT NOTE:**  
Compressors fitted check for correct rotation, if rotation incorrect, compressor/s will not pump, be disconnected and reverse rotation, reverse two phases

**NOTE: CONTROL TRANSFORMER 240V PRIMARY VOLTAGE IS USED FOR COUNTRIES WITH SUPPLY VOLTAGE 200-220V CHANGE PRIMARY VOLTAGE TO 208 ON TRANSFORMER**

**CLIENT WIRING - - - - -**  
**NOTE: CHECK WIRING BEFORE SWITCHING ON. INCORRECT CONNECTION WILL DAMAGE MOTORS.**

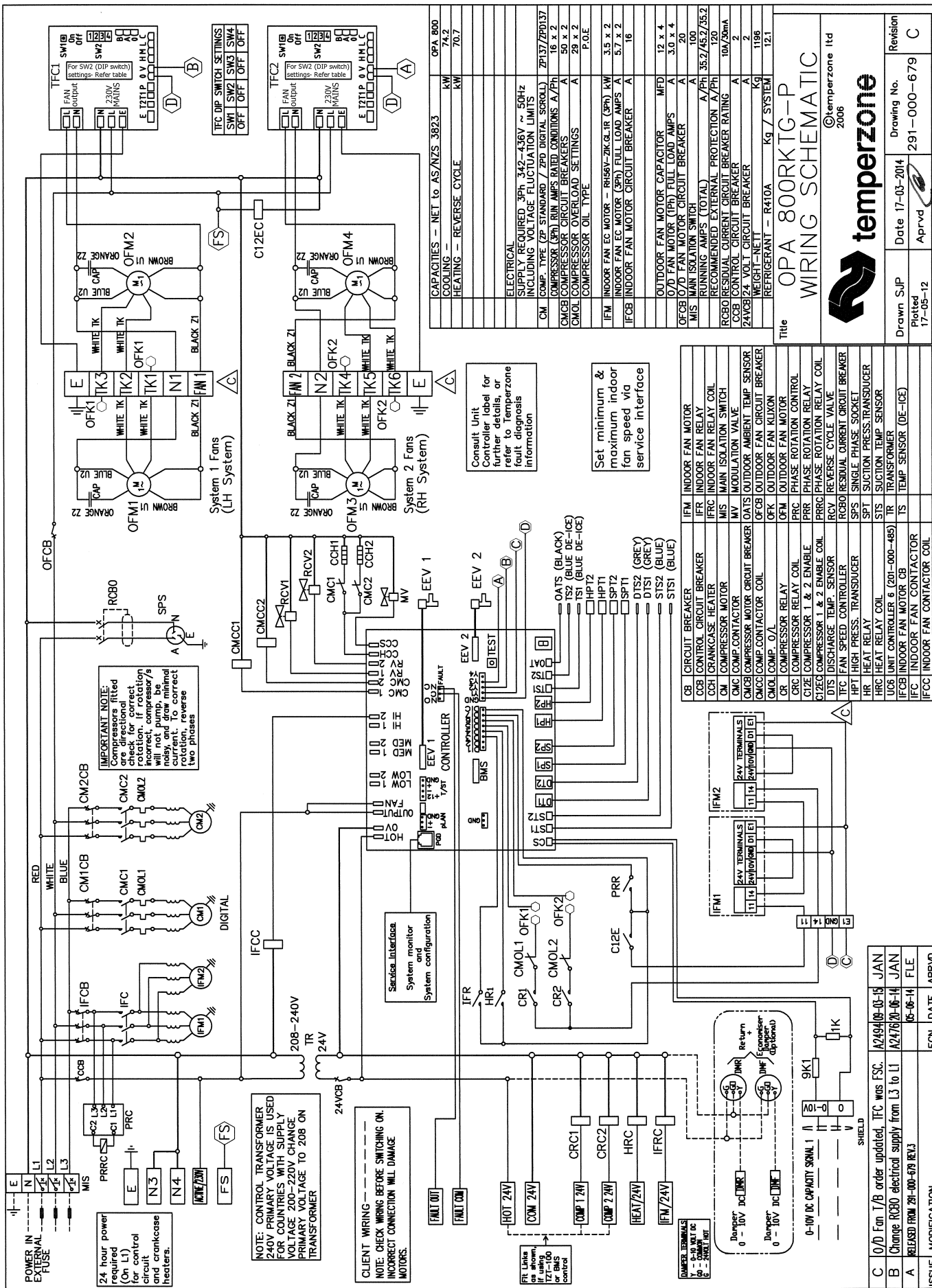
Consult Unit Controller label for further details, or refer to Temperzone fault diagnosis information

Set minimum & maximum indoor fan speed via service interface

CB	CIRCUIT BREAKER	IFM	INDOOR FAN MOTOR
CCB	CONTROL CIRCUIT BREAKER	IFR	INDOOR FAN RELAY
CCH	CRANKCASE HEATER	IFRC	INDOOR FAN RELAY COIL
CM	COMPRESSOR MOTOR	MCB	MAIN CIRCUIT BREAKER
CMC	COMP. CONTACTOR	MV	MODULATION VALVE
CMCB	COMPRESSOR MOTOR CIRCUIT BREAKER	OATS	OUTDOOR AMBIENT TEMP SENSOR
CMOL	COMP. OVERLOAD	OFCEB	OUTDOOR FAN MOTOR CIRCUIT BREAKER
GR	COMPRESSOR RELAY	OFK	OUTDOOR FAN KILUXON
GRC	COMPRESSOR RELAY COIL	OFM	OUTDOOR FAN MOTOR
G12E	COMPRESSOR 1 & 2 ENABLE	PRC	PHASE ROTATION CONTROL
G12C	COMPRESSOR 1 & 2 ENABLE COIL	PRR	PHASE ROTATION RELAY
DTS	DISCHARGE TEMP. SENSOR	RCV	REVERSE CYCLE VALVE
TFC	FAN SPEED CONTROLLER	RCB0	RESIDUAL CURRENT CIRCUIT BREAKER
HPT	HIGH PRESS. TRANSDUCER	SPS	SINGLE PHASE SOCKET
HR	HEAT RELAY	SPT	SUCTION PRESS. TRANSDUCER
HRC	HEAT RELAY COIL	STS	SUCTION TEMP. SENSOR
UCS	UNIT CONTROLLER 6 (201-000-485)	TR	TRANSFORMER
IFCB	INDOOR FAN MOTOR CB	TS	TEMP. SENSOR (DE-ICE)
IFCC	INDOOR FAN CONTACTOR COIL		

ISSUE	MODIFICATION	ECN	DATE	APRVD
A	Initial Release		19-03-15	AFC

# OPA 800RKTG-P



OPA 800	74.2
CAPACITIES - NET to AS/ANZS 3823	
COOLING -	KW
HEATING - REVERSE CYCLE	KW
ELECTRICAL	
SUPPLY REQUIRED 3PH, 342-436V ~ 50Hz	
INCLUDING VOLTAGE FLUCTUATION LIMITS	
CM COMP. TYPE (ZP STANDARD / ZPD DIGITAL SCROLL)	ZP137/ZPD137
COMPRESSOR (3PH) RUN AMPS RATED CONDITIONS A/2PH	16 x 2
CMCB COMPRESSOR CIRCUIT BREAKERS	A 50 x 2
CMOIL COMPRESSOR OIL TYPE	P.O.E
IFM INDOOR FAN EC MOTOR - RH56V-2K-G-1R (3PH)	3.5 x 2
IFM INDOOR FAN EC MOTOR (3PH) FULL LOAD AMPS	5.7 x 2
IFCB INDOOR FAN MOTOR CIRCUIT BREAKER	A 16
OUTDOOR FAN MOTOR CAPACITOR	MFD 12 x 4
O/D FAN MOTOR (1PH) FULL LOAD AMPS	A 3.0 x 4
MIS MAIN ISOLATION SWITCH	A 20
RCO RECOMMENDED EXTERNAL PROTECTION A/2PH	35.2/45.2/55.2
RCBO RECOMMENDED EXTERNAL PROTECTION A/2PH	16 x 2
RCOIL RECOMMENDED EXTERNAL PROTECTION A/2PH	10A/2mm
Z4V24V 24VOLT CIRCUIT BREAKER	A 2
WEIGHT - NET	Kg 1168
REFRIGERANT - R410A	Kg / SYSTEM 12.1



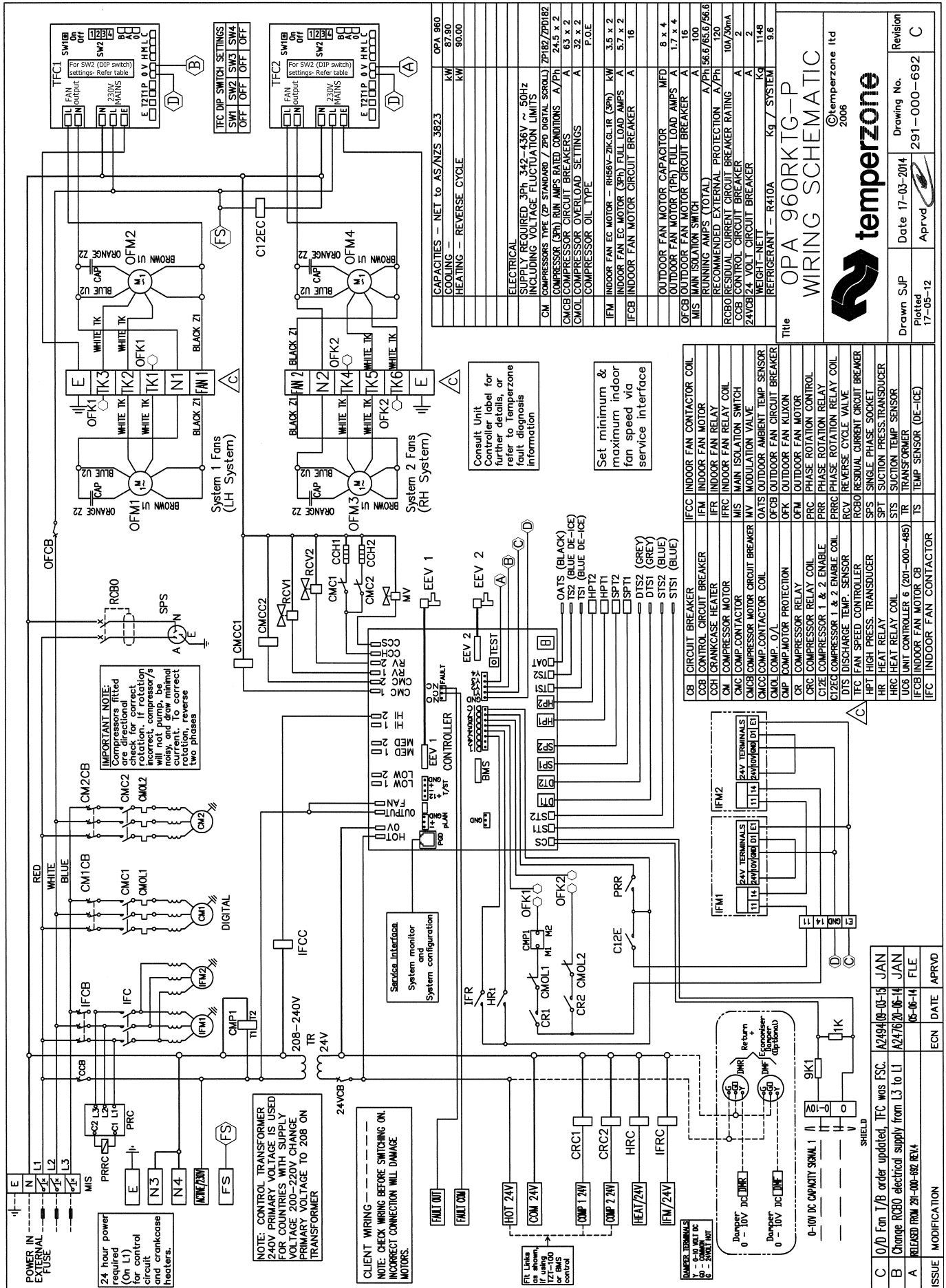
Title OPA 800RKTG-P  
WIRING SCHEMATIC  
©temperzone ltd  
2006

Drawn SJP	Date 17-03-2014	Drawing No.	291-000-679	Revision	C
Plotted 17-05-12	Aprvd				





# OPA 960RKTG-P



CAPACITIES - NET to AS/ANZS 3823	OPA 960
COOLING -	kW 87.90
HEATING - REVERSE CYCLE	kW 90.00
ELECTRICAL	
SUPPLY REQUIRED 3PH, 342-436V ~ 50Hz	
INCLUDING VOLTAGE FLUCTUATION LIMITS	
CM COMPRESSORS TYPE (2P STANDARD / 2PD DIGITAL SCROLL) ZPIBZ/ZPDI8Z	24.5 x 2
CMOL COMPRESSOR RUN AMPS RATED CONDITIONS A/FPH	63 x 2
CMCB COMPRESSOR CIRCUIT BREAKERS	32 x 2
CMOL COMPRESSOR OVERLOAD SETTINGS	A
COMPRESSOR OIL TYPE	P.O.E.
IFM INDOOR FAN EC MOTOR - RH56V-2K-GL-R (3PH)	3.5 x 2
INDOOR FAN EC MOTOR (3PH) FULL LOAD AMPS A	5.7 x 2
IFCB INDOOR FAN MOTOR CIRCUIT BREAKER	A 16
OUTDOOR FAN MOTOR CAPACITOR	MFD 8 x 4
OUTDOOR FAN MOTOR (1PH) FULL LOAD AMPS A	1.7 x 4
OUTDOOR FAN MOTOR CIRCUIT BREAKER	A 16
MIS MAIN ISOLATION SWITCH	A/FPH 186.0/153.0/166.0
RCBO RECOMMENDED EXTERNAL PROTECTION A/FPH	720
RCBO RECOMMENDED EXTERNAL PROTECTION RATING	10A 20mA
RCBO CONTROL CIRCUIT BREAKER	A 2
Z4V0B 24 VOLT CIRCUIT BREAKER	A 1148
WEIGHT-NET	Kg 1148
REFRIGERANT - R410A	Kg 7 SYSTEM
	9.6



## OPA 960RKTG-P WIRING SCHEMATIC

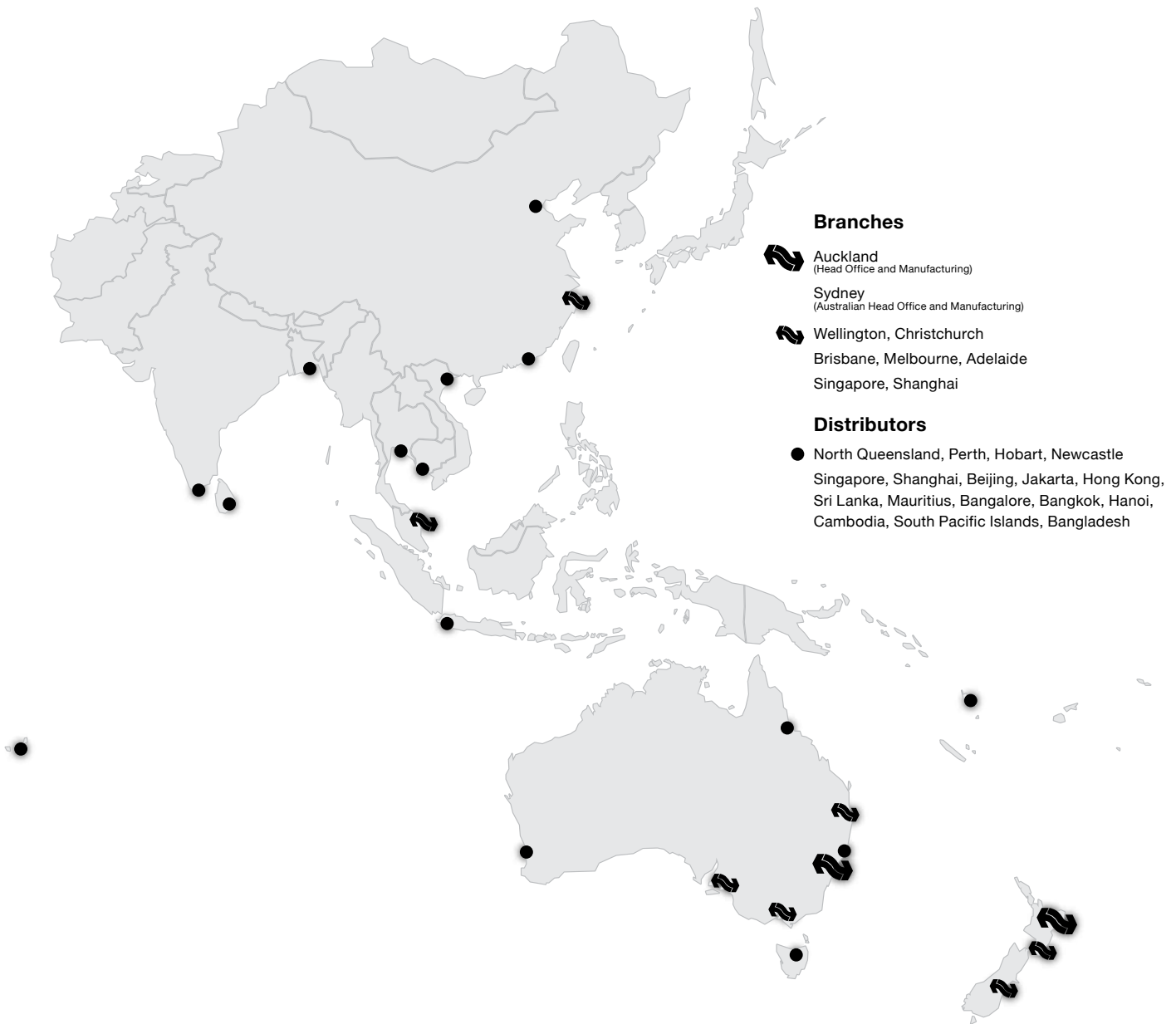
©temperzone ltd 2006

Drawn SJP	Date 17-03-2014	Drawing No.	291-000-692	Revision	C
Plotted 17-05-12	Aprvd				

IFCC INDOOR FAN CONTACTOR COIL	IFM INDOOR FAN MOTOR
IFR INDOOR FAN RELAY	IFCB INDOOR FAN MOTOR CIRCUIT BREAKER
IFC INDOOR FAN RELAY COIL	MIS MAIN ISOLATION SWITCH
CM COMPRESSOR MOTOR	RCBO RECOMMENDED EXTERNAL PROTECTION
CMC COMP CONTACTOR	RCBO RECOMMENDED EXTERNAL PROTECTION RATING
CMCB COMPRESSOR MOTOR CIRCUIT BREAKER	RCBO CONTROL CIRCUIT BREAKER
CMC COMP CONTACTOR COIL	Z4V0B 24 VOLT CIRCUIT BREAKER
CMOL COMP. O/L	WEIGHT-NET
OF-OB OUTDOOR AMBIENT TEMP SENSOR	REFRIGERANT - R410A
OFK OUTDOOR FAN KILUXON	
OFM OUTDOOR FAN MOTOR	
PRC PHASE ROTATION CONTROL	
PRR PHASE ROTATION RELAY	
C12EC COMPRESSOR 1 & 2 ENABLE COIL	
C12E DISCHARGE TEMP SENSOR	
TEC FAN PRESS. TRANSDUCER	
HPT HIGH PRESS. TRANSDUCER	
HR HEAT RELAY	
HRC HEAT RELAY COIL	
HUC HEAT UNIT CONTROLLER 6 (201-000-485)	
IFCB INDOOR FAN MOTOR CB	
IFC INDOOR FAN CONTACTOR	

C	0/D Fan 1/B order updated, IFC was ESC.	A2494/08-03-15	JAN
B	Change RCBO electrical supply from L3 to L1	A2476/20-16-14	JAN
A	RELEASED FROM 291-000-692 REV.4	05-06-14	FILE
ISSUE	MODIFICATION	ECN	DATE
		APRVD	





**temperzone australia pty ltd**

Head Office - Sydney  
 14 Carnegie Place, Blacktown  
 PO Box 6448, Delivery Centre, Blacktown NSW 2148, Australia  
 Email: sales@temperzone.com.au

<b>Sydney.</b>	(02) 8822 5700	<b>Perth.</b>	(08) 9314 3844
<b>Brisbane.</b>	(07) 3308 8333	<b>Townsville.</b>	(07) 4774 3506
<b>Melbourne.</b>	(03) 8769 7600	<b>Tasmania.</b>	(03) 6331 4209
<b>Adelaide.</b>	(08) 8115 2111	<b>Newcastle.</b>	(02) 4962 1155

**www.temperzone.biz**