

SPECIFICATIONS



Air Handling Unit (345-030-XYZ / 345-035-000) ¹	MT 030	
Nominal Air Volume ²	750 l/s	
Nominal Cooling Capacity ³	4 row	15.0 kW
	6 row	19.2 kW
	8 row	22.0 kW
Nominal Heating Capacity ⁴	1 row	18.0 kW
	2 row	31.7 kW
Fan type	EC plug (x1)	
Fan motor size (3ph.)	1300 W / 355 mm dia.	
Unit Max. running amps	2.1 A /ph.	
Protection Rating	IP4X	
Power supply ⁵	3 ph. 400 V ac 50 Hz + N + E	
RCD type recommended	type A, 30 mA, 3 pole	
Net weight – fan coil section	141 – 165 kg ⁶	
Net weight – plenum section – bare	87 kg	
Net weight – plenum section – damper mix	95 kg	
Shipping weight – fan coil section	166 – 190 kg ⁶	
Shipping weight – plenum section – bare	111 kg	
Shipping weight – plenum section – damper mix	120 kg	

Accessories:

Filter - rated EU4/G4 disposable	019-000-158 594 x 594 x 44
Filter - rated EU4/G4 washable	019-400-140 594 x 594 x 46
Filter - rated F7 bag type	019-400-153 592 x 592 x 600
Filter - rated F9 cartridge type	019-400-160 592 x 592 x 292

Optional:

Chilled water coil 1/2"	4 / 6 / 8 row
Hot water coil 1/2"	1 / 2 row

Refer to temperzone for other options, eg remote sensors

¹ X = cooling coil rows, Y = heating coil rows and Z = hanging. (Fan Coil Section / Plenum Section {bare})

² Based on 2.5 m/s coil face velocity

³ Cooling at nominal air flow, EAT 27 °C db / 19 °C wb, EWT 6°C, LWT 13°C.

⁴ Heating at nominal air flow, EAT 15 °C, EWT 80°C, LWT 60°C.

⁵ Voltage range: 380–440V

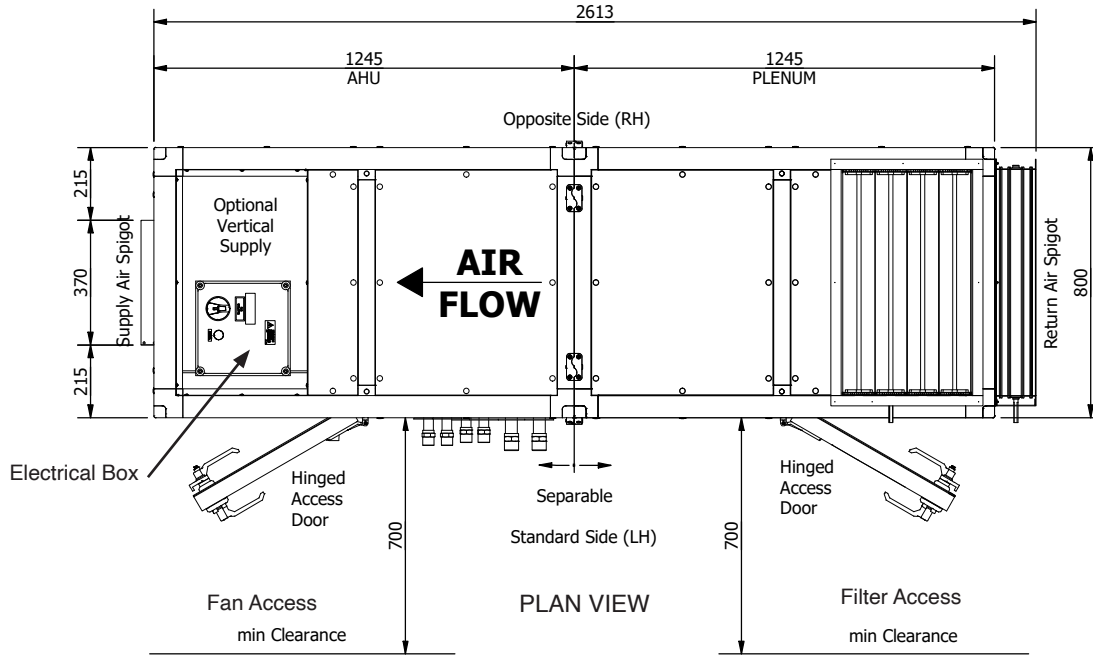
⁶ Depending on coil configuration; refer table page 2

DIMENSIONS (mm)



MT 030 Complete Air Handling Unit

Not to Scale

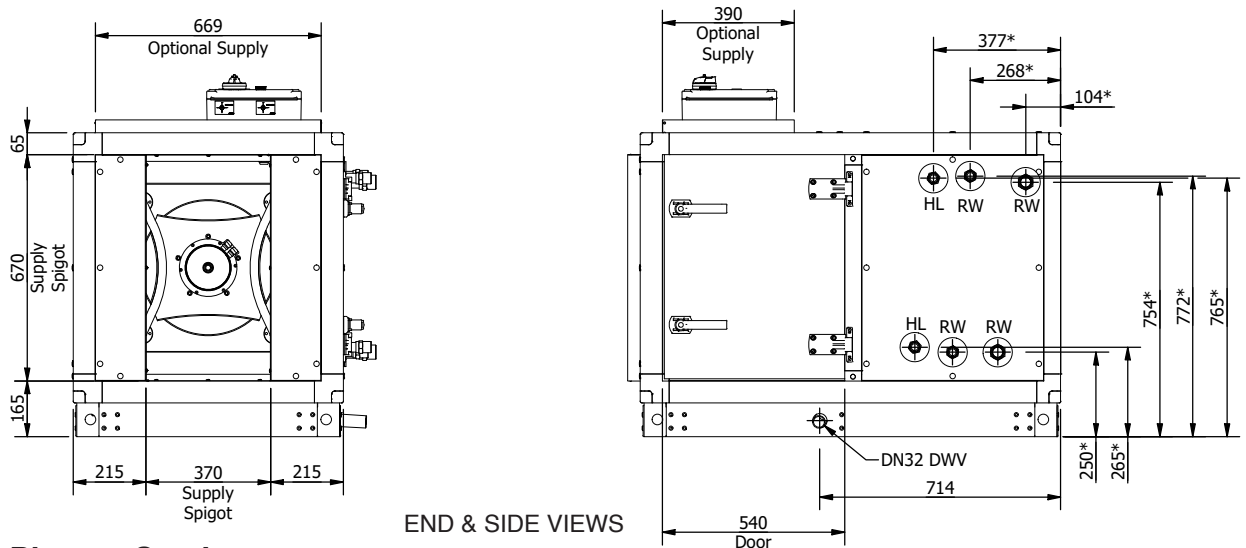


MT030 AHU	
COIL CONFIG	WEIGHT (kg)
4C 1H	150
6C 1H	162
4C 2H	153
6C 2H	165
4C 0H	141
6C 0H	153

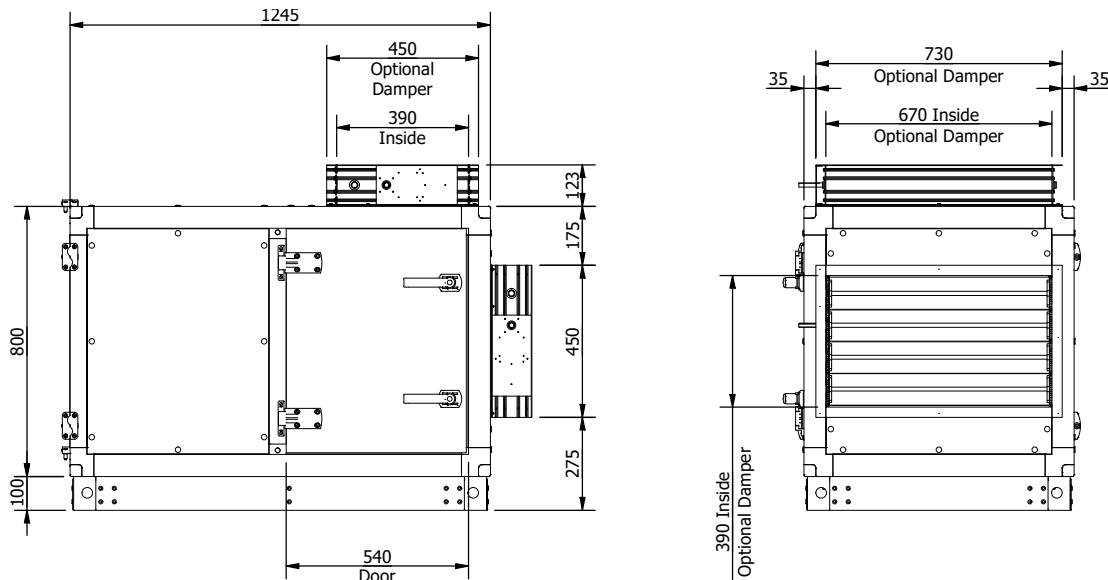
MT030 PLENUM	
CONFIGURATION	WEIGHT (kg)
HORIZONTAL BARE	86
VERTICAL BARE	87
DAMPER MIX	95

Pipe Connections
1/2" male BSP

MT 030 Fan Coil Section



MT 030 Plenum Section

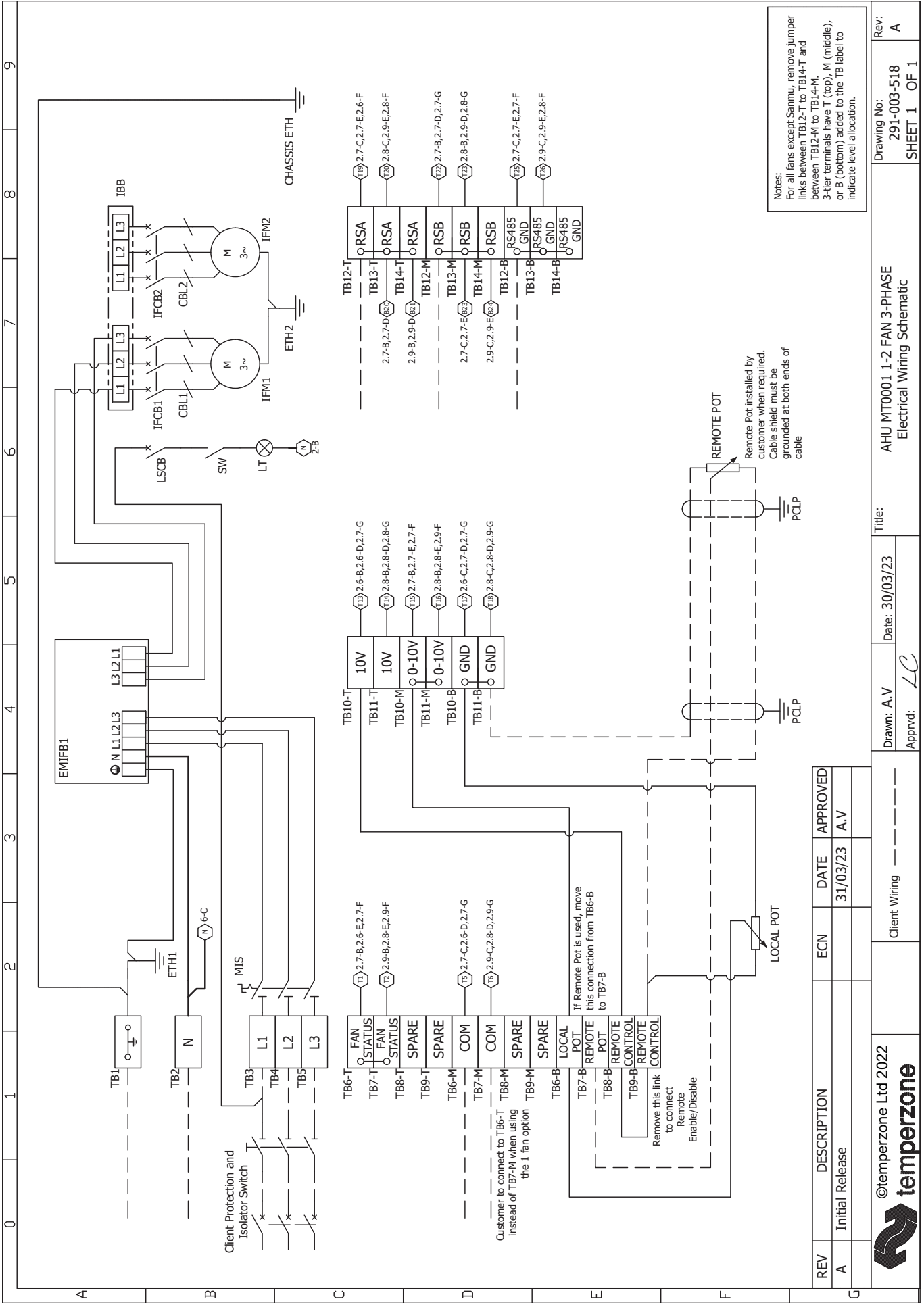


NOTE

Specifications are subject to change without notice due to the manufacturer's ongoing research and development programme.

SIDE & END VIEWS

WIRING



Notes:
 For all fans except Sanmu, remove jumper links between TB12-T to TB14-T and between TB12-M to TB14-M. 3-tier terminals have T (top), M (middle), or B (bottom) added to the TB label to indicate level allocation.

Remote Pot installed by customer when required. Cable shield must be grounded at both ends of cable.

REV	DESCRIPTION	ECN	DATE	APPROVED
A	Initial Release		31/03/23	A.V



©temperzone Ltd 2022


Client Wiring

Drawn: A.V
 Approved: LC

Date: 30/03/23

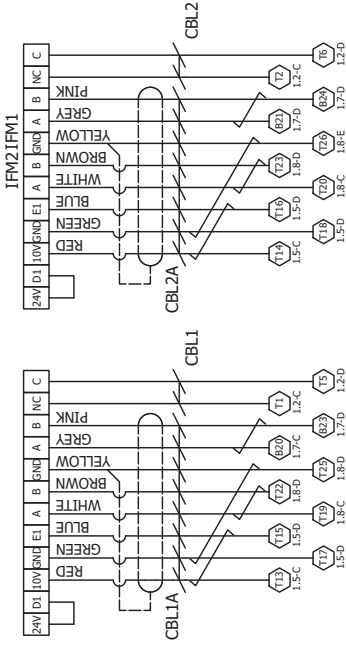
Title: AHU MT0001 1-2 FAN 3-PHASE
 Electrical Wiring Schematic

Drawing No: 291-003-518
 SHEET 1 OF 1
 Rev: A

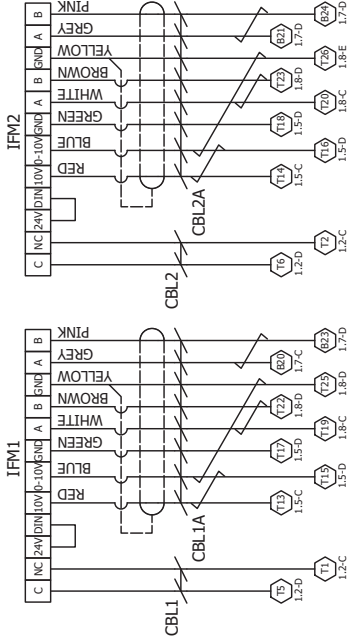
	0	1	2	3	4	5	6	7	8	9
A	CBL	CABLE								
	EMIFB	MAINS EMI FILTER BOARD								
	ETH	EARTH STUD								
	IBB	INTERCONNECTING BUSBAR								
	IFCB	INDOOR FAN CIRCUIT BREAKER								
	IFM	INDOOR FAN MOTOR								
	LSCB	LIGHT SWITCH CIRCUIT BREAKER								
	LT	CLASS II LIGHT FITTING								
	MIS	MAIN ISOLATION SWITCH								
	PCLP	SHIELD GROUNDING CLIP								
	POT	POTENTIOMETER								
	SW	SWITCH								
	TB	TERMINAL BLOCK								
B										
C										
D										
E										
F										
G	REV	DESCRIPTION	ECN	DATE	APPROVED					
	A	Initial Release		31/03/23	A.V					
	 ©temperzone Ltd 2022									
	Client Wiring									
	Drawn: A.V	Date: 30/03/23	Title: AHU MT0001 1-2 FAN 3-PHASE Electrical Wiring Schematic							
	Appvd: LC									
	Drawing No: 291-003-518					Rev: A				
	SHEET 2 OF 2									

IFM OPTIONS

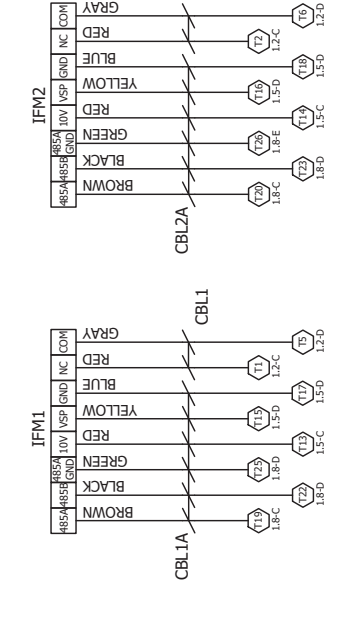
Note: Fan options will change subject to fan supply availability



OPTION A - Ziehl Abegg



OPTION B - Rosenberg



OPTION C - Sanmu

