

SPECIFICATIONS



Air Handling Unit (345-120-XYZ / 345-125-000) ¹	MT 120	
Nominal Air Volume ²	3 000 l/s	
Nominal Cooling Capacity ³	4 row	66.6 kW
	6 row	82.7 kW
	8 row	93.5 kW
Nominal Heating Capacity ⁴	1 row	79.9 kW
	2 row	133 kW
Fan type	EC plug (x1)	
Fan motor size (3ph.)	2800 W / 500 mm dia.	
Unit Max. running amps	4.4 A /ph.	
Protection Rating	IP4X	
Power supply ⁵	3 ph. 400 V ac 50 Hz + N + E	
RCD type recommended	type A, 30 mA, 3 pole	
Net weight – fan coil section	334 – 416 kg ⁶	
Net weight – plenum section – bare	157 kg	
Net weight – plenum section – damper mix	176 kg	
Shipping weight – fan coil section	394 – 476 kg ⁶	
Shipping weight – plenum section – bare	199 kg	
Shipping weight – plenum section – damper mix	218 kg	

Accessories:

Filter - rated EU4/G4 disposable	019-000-158 594 x 594 x 44 (x4)
Filter - rated EU4/G4 washable	019-400-140 594 x 594 x 46 (x4)
Filter - rated F7 bag type	019-400-153 592 x 592 x 600 (x4)
Filter - rated F9 cartridge type	019-400-160 592 x 592 x 292 (x4)

Optional:

Chilled water coil 1/2"	4 / 6 / 8 row
Hot water coil 1/2"	1 / 2 row

Refer to temperzone for other options, eg remote sensors

¹ X = cooling coil rows, Y = heating coil rows and Z = hanging. (Fan Coil Section / Plenum Section {bare})

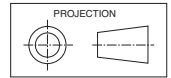
² Based on 2.5 m/s coil face velocity

³ Cooling at nominal air flow, EAT 27 °C db / 19 °C wb, EWT 6°C, LWT 13°C.

⁴ Heating at nominal air flow, EAT 15 °C, EWT 80°C, LWT 60°C.

⁵ Voltage range: 380–440V

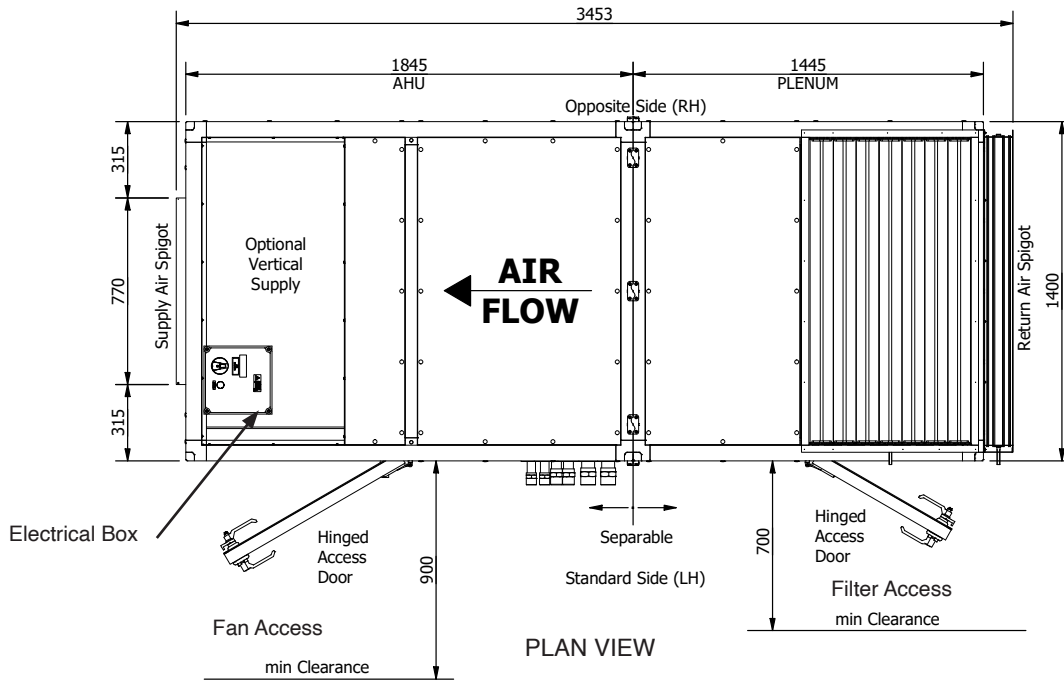
⁶ Depending on coil configuration; refer table page 2



MT 120 Complete Air Handling Unit

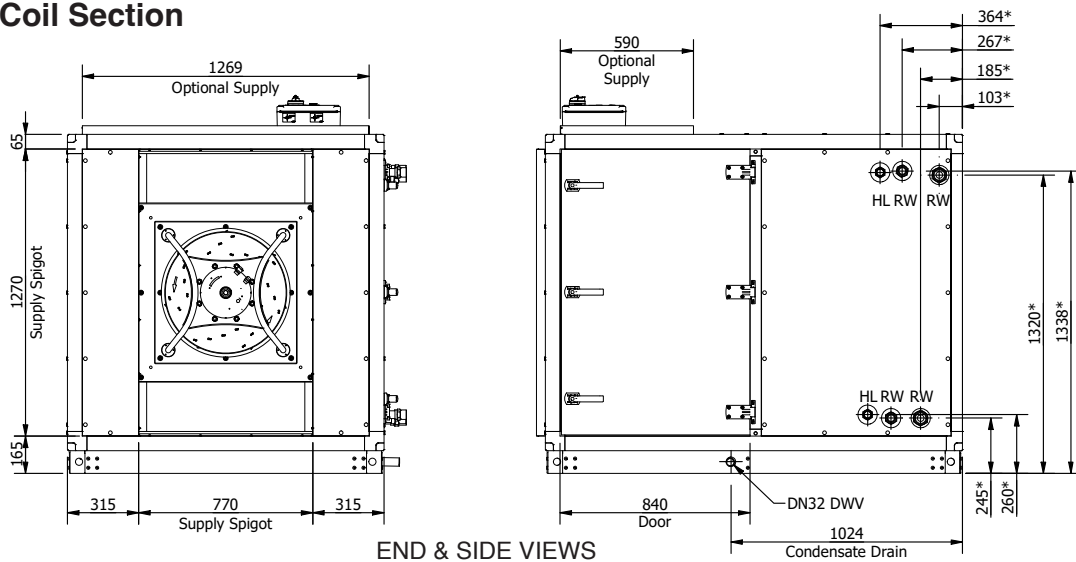
Not to Scale

Pipe Connections
1/2" male BSP



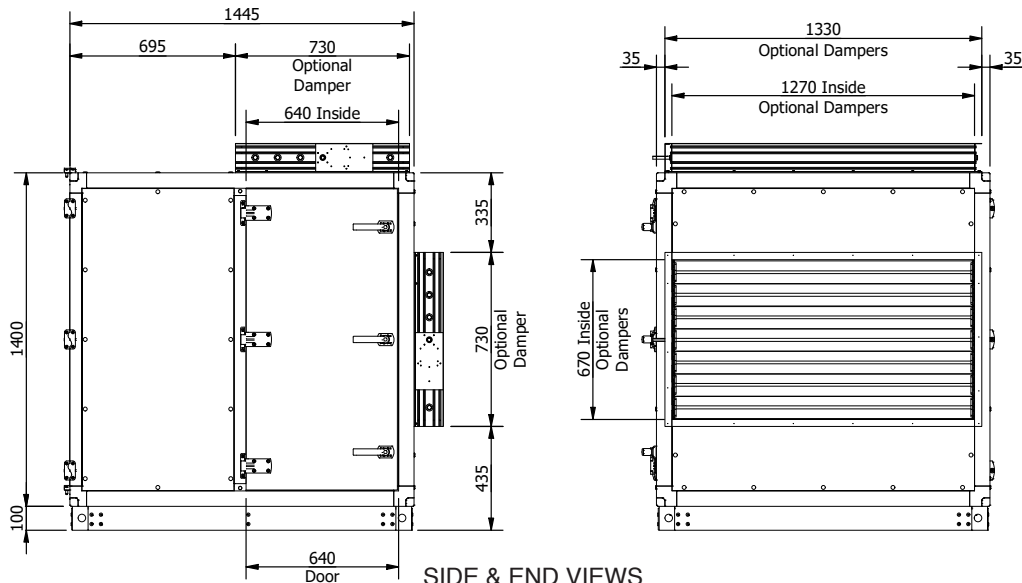
PLAN VIEW

MT 120 Fan Coil Section



END & SIDE VIEWS

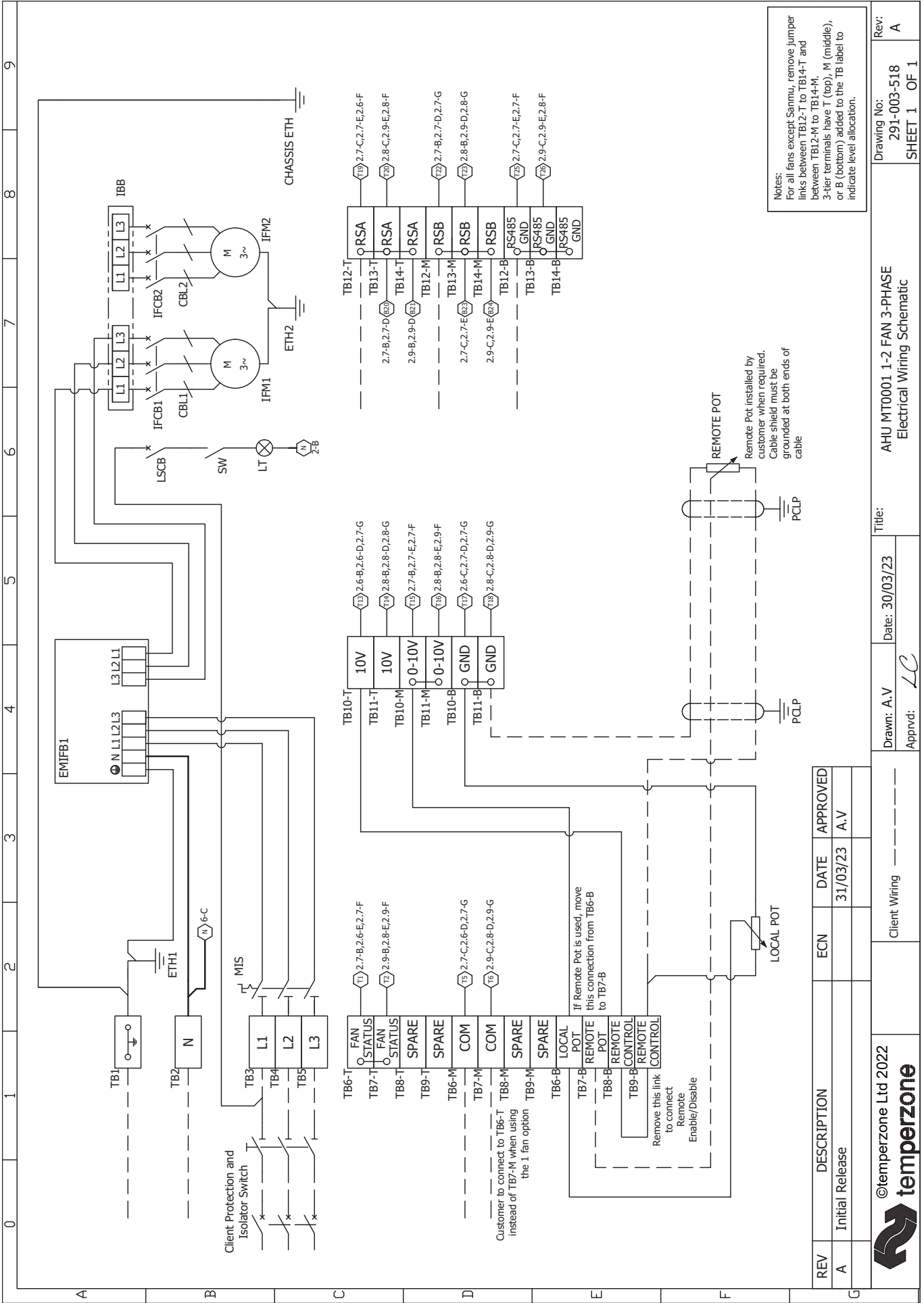
MT 120 Plenum Section



SIDE & END VIEWS

NOTE
Specifications are subject to change without notice due to the manufacturer's ongoing research and development programme.

WIRING



REV	DESCRIPTION	ECN	DATE	APPROVED
A	Initial Release		31/03/23	A.V

©temperzone Ltd 2022

Drawn: A.V
 Date: 30/03/23
 Title: AHU MT0001 1-2 FAN 3-PHASE Electrical Wiring Schematic

Rev: A
 Drawing No: 291-003-518
 SHEET 1 OF 1

0	1	2	3	4	5	6	7	8	9										
A	<p>IFM OPTIONS</p> <p>Note: Fan options will change subject to fan supply availability</p> <p>IFM1</p> <p>IFM2</p> <p>OPTION A - Ziehl Abegg</p> <p>OPTION B - Rosenberg</p> <p>OPTION C - Sanmu</p>																		
B	<table border="1"> <thead> <tr> <th>REV</th> <th>DESCRIPTION</th> <th>ECN</th> <th>DATE</th> <th>APPROVED</th> </tr> </thead> <tbody> <tr> <td>A</td> <td>Initial Release</td> <td></td> <td>31/03/23</td> <td>A.V</td> </tr> </tbody> </table>									REV	DESCRIPTION	ECN	DATE	APPROVED	A	Initial Release		31/03/23	A.V
REV	DESCRIPTION	ECN	DATE	APPROVED															
A	Initial Release		31/03/23	A.V															
C	<p>Client Wiring -----</p> <p>Drawn: A.V Date: 30/03/23</p> <p>Appvd: <i>LC</i></p>																		
D	<p>©temperzone Ltd 2022</p>																		
E	<p>Title: AHU MT0001 1-2 FAN 3-PHASE Electrical Wiring Schematic</p>																		
F	<p>Rev: 291-003-518 A</p> <p>SHEET 2 OF 2</p>																		
G	<p>003-000-305 07/23 www.temperzone.biz © temperzone limited 2023</p>																		

CBL	CABLE
EMIFB	MAINS EMI FILTER BOARD
ETH	EARTH STUD
IBB	INTERCONNECTING BUSBAR
IFCB	INDOOR FAN CIRCUIT BREAKER
IFM	INDOOR FAN MOTOR
LSCB	LIGHT SWITCH CIRCUIT BREAKER
LT	CLASS II LIGHT FITTING
MIS	MAIN ISOLATION SWITCH
PCLP	SHIELD GROUNDING CLIP
POT	POTENTIOMETER
SW	SWITCH
TB	TERMINAL BLOCK