

SPECIFICATIONS



Model	MWS 250LT-S1	
Item No.	503-025-005	
Rating condition	19/16 °C db/wb	7/6 °C db/wb
Nominal EWT/LWT °C	20 / 62	15 / 62
Nominal Heating Capacity kW ¹	27	20
Input Power kW ¹	6.8	7.1
COP ¹	4.0	2.8
Unit Controller	UC8	
Design HEX differential °C	42	47
Water Flow rate l/min. ¹	9.2	6.1
Min./Max. Inlet Water temp. °C (Heating)	2 / 35	
Min. Operating Ambient Air temp. °C	-10	
Max. Water Temperature °C	65	
Entering Water Pressure Drop kPa ²	14 (2 psi)	7 (1 psi)
Heat Exchanger	Thermoshell®	
Desuperheater	Thermoshell®	
Max. Operating Pressure of pump kPa	1000 (145psi)	
Electronic Expansion Valves	1	
Refrigerant	R32	
Refrigerant Charge kg	2.5	
Compressor type	Fixed scroll	
Compressor technology	Liquid injection	
Compressor oil type	POE-46 (NXG5020 or equivalent)	
Power supply ³	3 ph. 400 V ac 50 Hz + N + E	
Compressor overload setting A	15	
Running current A	10 / 11 / 10	11 / 12 / 11
Max. Running Current A	15 / 16 / 15	15 / 16 / 15
RCD type recommended	type A, 30mA, 3 pole	
Water connections	³ / ₄ " BSP male (x2)	
Sound Power ⁴ (SWL) dB(A)	72	
Sound Pressure @ 3m (SPL) dB(A)	56	
Fan type	3 speed Axial 500mm	
Pump type	Integrated BLDC	
Max. Head Delivery of Pump m	8	
Communication Options	BMS / Modbus	
Design technology	Anti-thermosyphon system	
Storage tank requirement	Thermally stratified	
Net weight (excl. water) kg	189	
Shipping weight kg	198	

¹ At rating conditions above

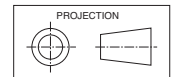
² Pressure drop at Water Flow rate and rating conditions above.

³ Voltage range: 380–415V.

⁴ Radiated. EN 12102-1:2017

190XX

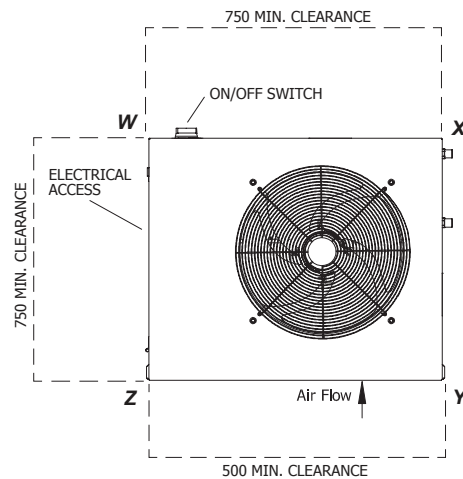
DIMENSIONS (mm)



Not to Scale

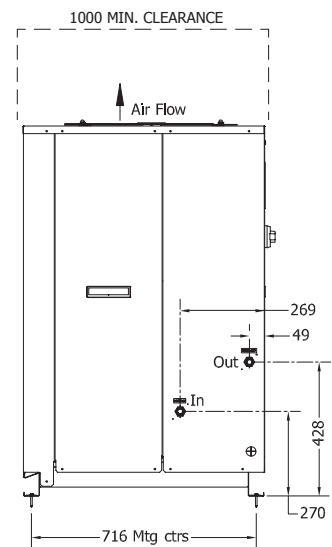
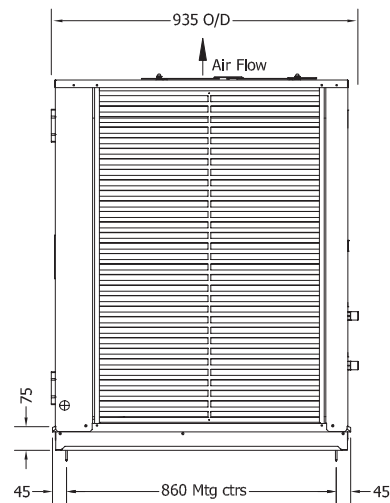
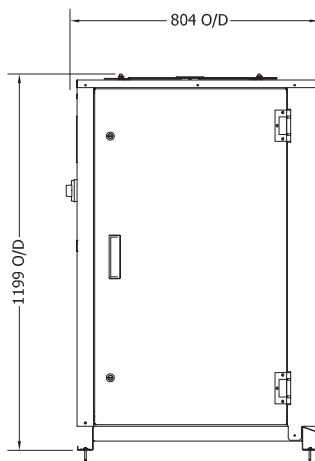
MWS 250LT

POINT LOADS (kg)				
W	X	Y	Z	
58	47	34	50	



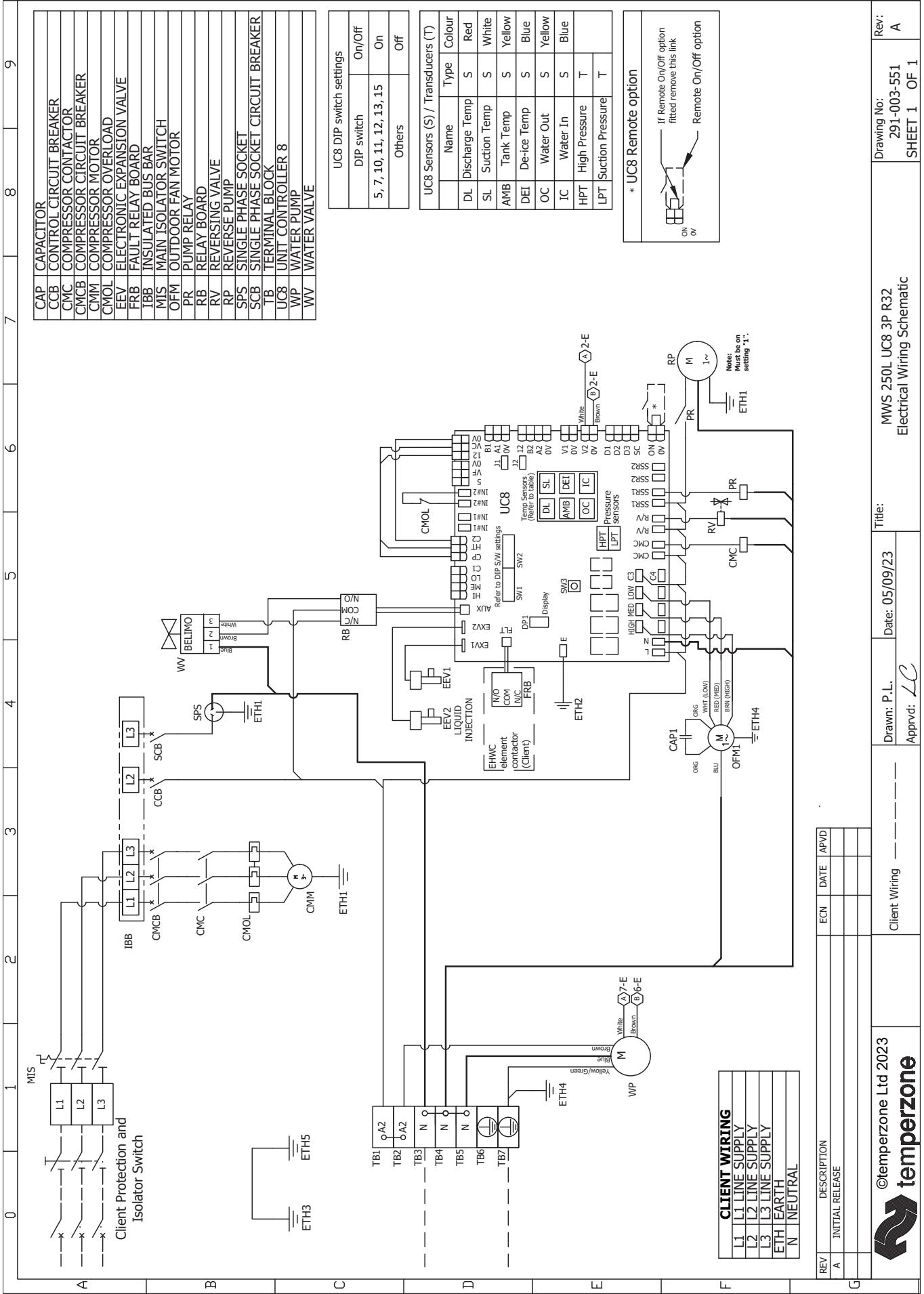
Note: If multiple units are to be placed side-by-side then allow at least 1m between coil faces.

Water Conns:
2x BSP Male 19.05mm (3/4")



NOTE

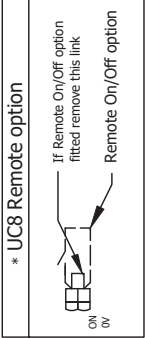
Specifications are subject to change without notice due to the manufacturer's ongoing research and development programme.



CAP	CAPACITOR
CCB	CONTROL CIRCUIT BREAKER
CMC	COMPRESSOR CONTACTOR
CMCB	COMPRESSOR CIRCUIT BREAKER
CMM	COMPRESSOR MOTOR
CMOL	COMPRESSOR OVERLOAD
EEV	ELECTRONIC EXPANSION VALVE
FRB	FAULT RELAY BOARD
IBB	INSULATED BUS BAR
MIS	MAIN ISOLATOR SWITCH
OFM	OUTDOOR FAN MOTOR
PR	PUMP RELAY
RB	RELAY BOARD
RV	REVERSING VALVE
RP	REVERSE PUMP
SPS	SINGLE PHASE SOCKET
SCB	SINGLE PHASE SOCKET CIRCUIT BREAKER
TB	TERMINAL BLOCK
UC8	UNIT CONTROLLER 8
WP	WATER PUMP
WV	WATER VALVE

UC8 DIP switch settings	
DIP switch	On/Off
5, 7, 10, 11, 12, 13, 15	On
Others	Off

UC8 Sensors (S) / Transducers (T)		
Name	Type	Colour
DL	Discharge Temp	Red
SL	Suction Temp	White
AMB	Tank Temp	Yellow
DEI	De-ice Temp	Blue
OC	Water Out	Yellow
IC	Water In	Blue
HPT	High Pressure	Blue
LPT	Suction Pressure	Blue



CLIENT WIRING	
L1	L1 LINE SUPPLY
L2	L2 LINE SUPPLY
L3	L3 LINE SUPPLY
ETH	EARTH
N	NEUTRAL

REV	DESCRIPTION	ECN	DATE	APVD
A	INITIAL RELEASE			



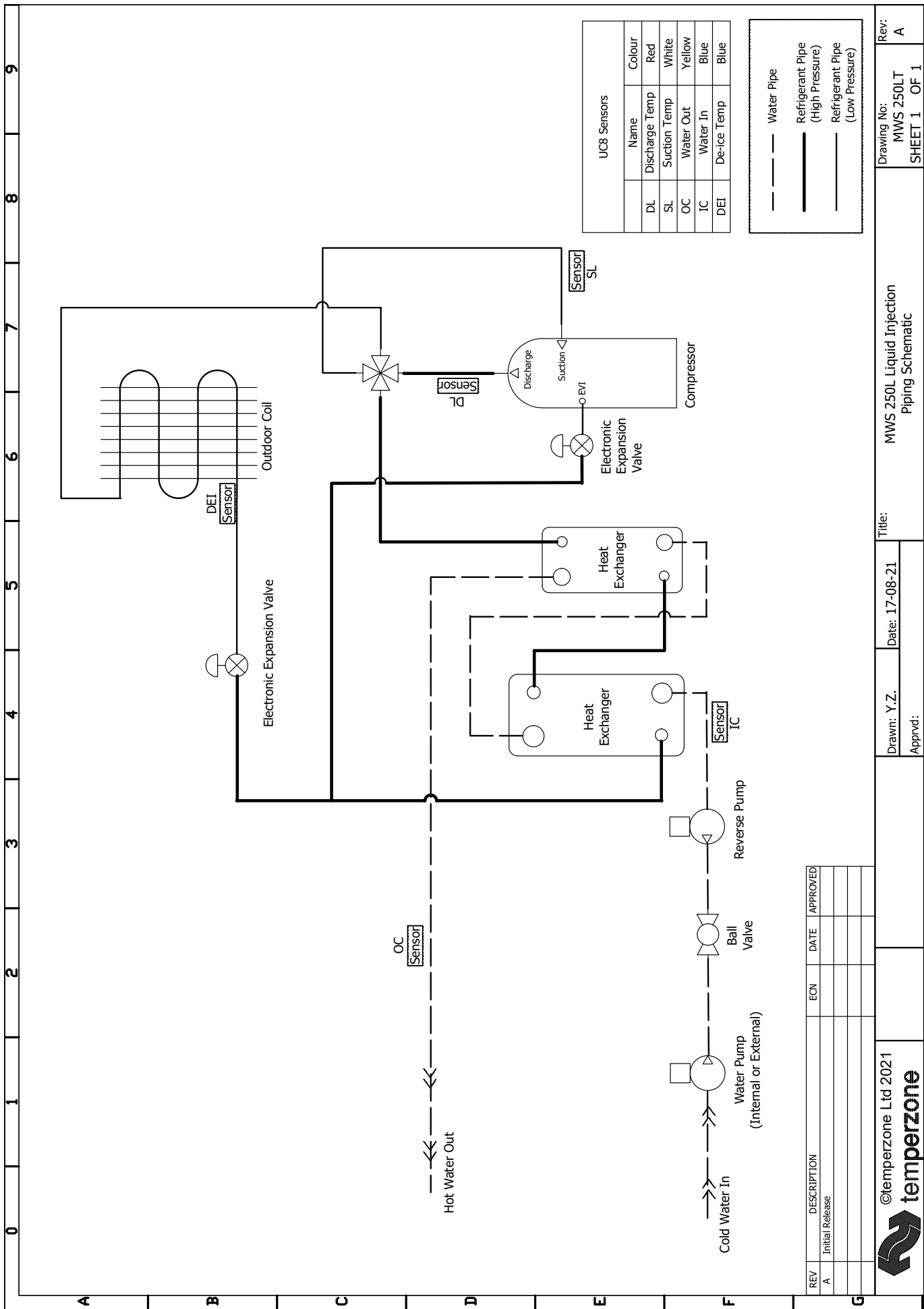
Client Wiring

Drawn: P.L.
Date: 05/09/23
Approved: LC

Title: MWS 250L UC8 3P R32
Electrical Wiring Schematic

Drawing No: 291-003-551
SHEET 1 OF 1
Rev: A

INTERNAL PIPING



Drawing No: MWS 250LT
 SHEET 1 OF 1
 Title: MWS 250L Liquid Injection Piping Schematic
 Date: 17-08-21
 Drawn: Y.Z.
 Apprvd:

REV	DESCRIPTION	ECN	DATE	APPROVED
A	Initial Release			

©temperzone Ltd 2021