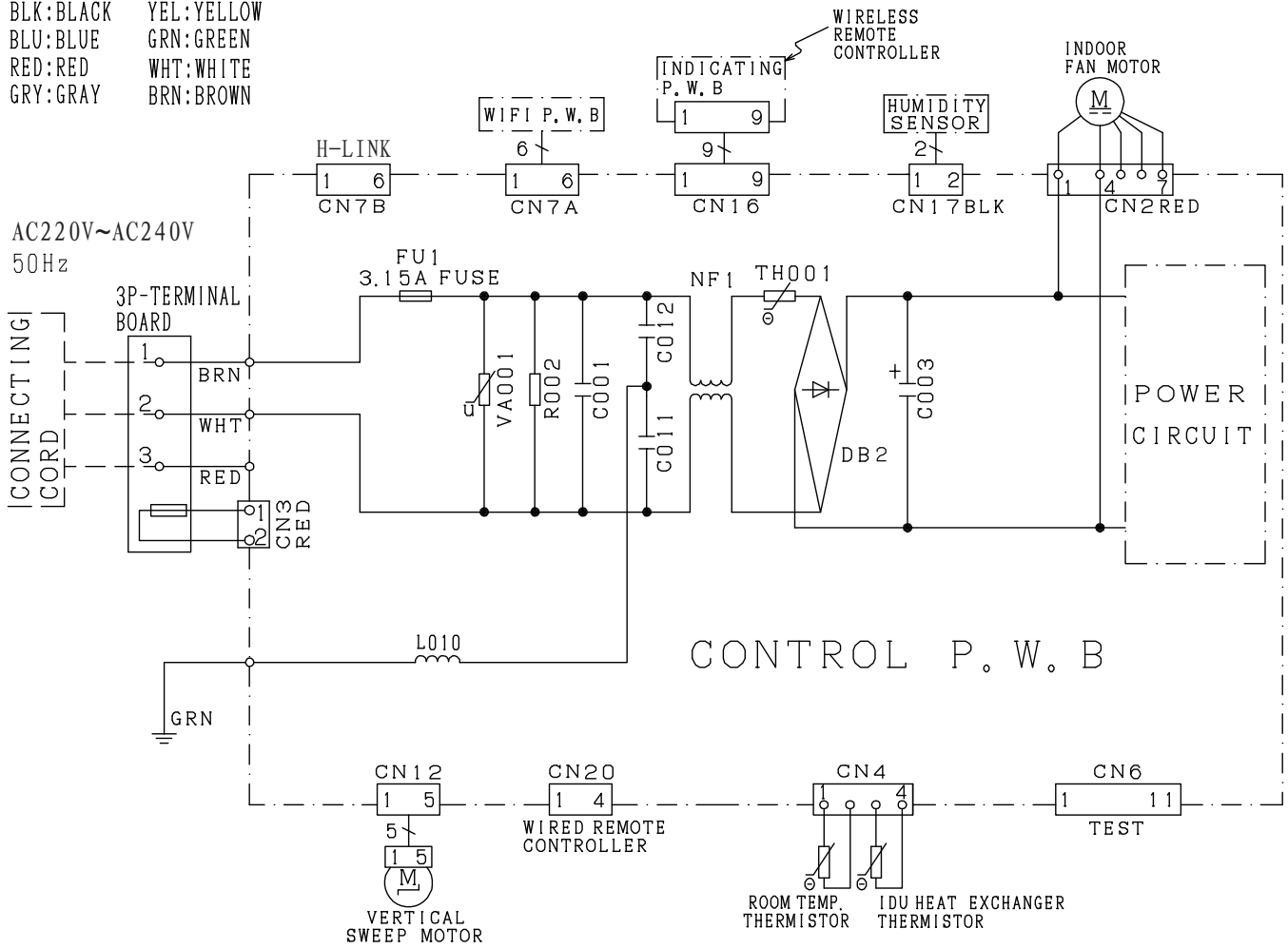


# 7 WIRING DIAGRAM

## 7.1. RAK-DJ25/35/50PHAT

### WIRING DIAGRAM

BLK:BLACK YEL:YELLOW  
 BLU:BLUE GRN:GREEN  
 RED:RED WHT:WHITE  
 GRY:GRAY BRN:BROWN



CAUTION! HIGH VOLTAGE	TURN OFF THE POWER SOURCE DURING THE SERVICE WORK.
--------------------------	---

※ SOME MODELS NOT NEED TO INSTALL WIFI P.W.B.

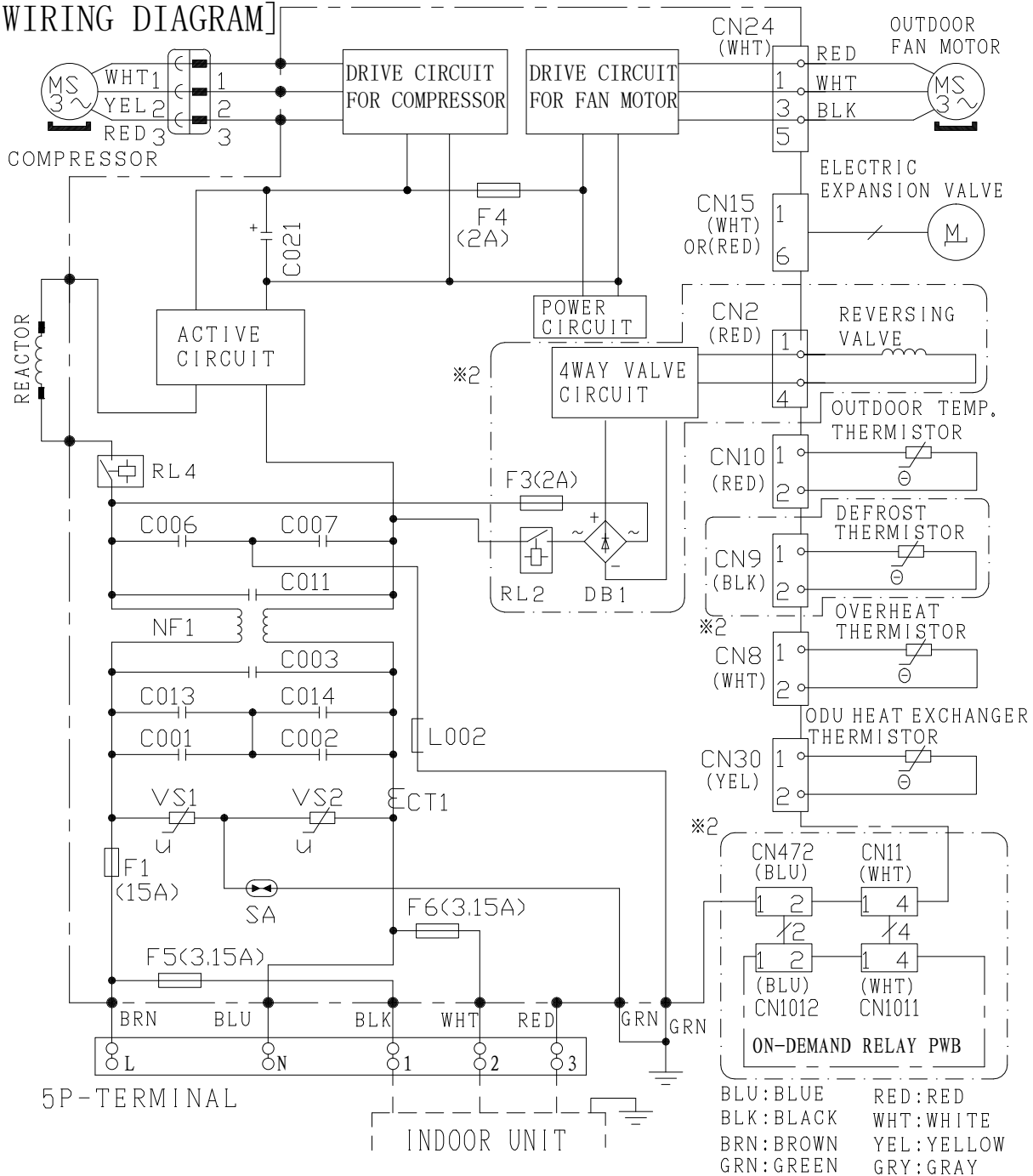
7.2. RAC-DJ25/35PHAT

**⚠ ⚡ DANGER (DC350V)**  
 CUT THE POWER SOURCE AND WAIT MORE THAN 10 MINUTES BEFORE SERVICING WORK.  
 MEASURE DC VOLTAGE (※1) AND CONFIRMED THAT IT IS MUST BE LESS THAN 10V.

LED(※1) INDICATION DURING COMPRESSOR OPERATE	
LD301	OPERATION STATUS
LIT	NORMAL
BLINK REPEATINGLY WITH 2 SECONDS LIT - 0.3 SECONDS OFF	OVERLOAD (NORMAL)

※1 DC VOLTAGE VALIDATION, LED POSITION AND FAN OPERATION REFER TO THE SERVICE MANUAL.

[WIRING DIAGRAM]



7.2. RAC-DJ50PHAT

**⚠ ⚡ DANGER (DC350V)**  
 CUT THE POWER SOURCE AND WAIT MORE THAN 10 MINUTES BEFORE SERVICING WORK.  
 MEASURE DC VOLTAGE(※1) AND CONFIRMED THAT IT IS MUST BE LESS THAN 10V.

LED(※1) INDICATION DURING COMPRESSOR OPERATE	
LD301	OPERATION STATUS
LIT	NORMAL
BLINK REPEATINGLY WITH 2 SECONDS LIT - 0.3 SECONDS OFF	OVERLOAD (NORMAL)

※1 DC VOLTAGE VALIDATION, LED POSITION AND FAN OPERATION REFER TO THE SERVICE MANUAL.

[WIRING DIAGRAM]

