

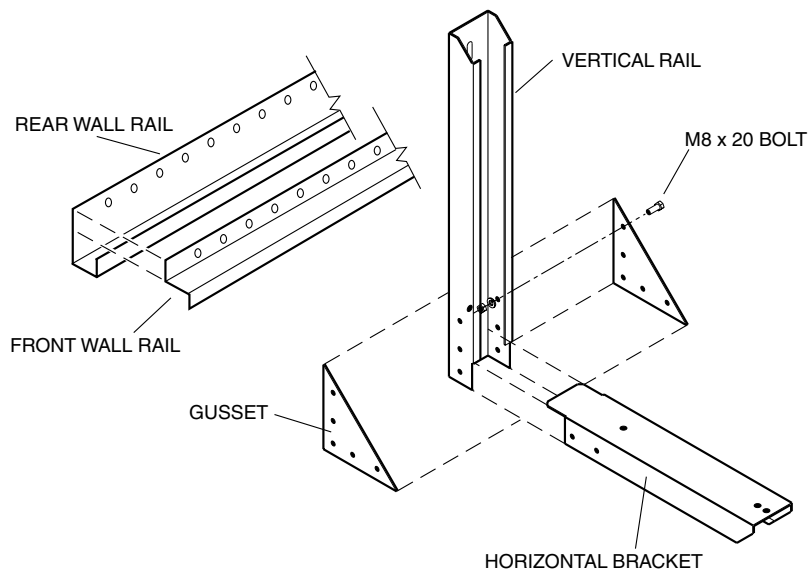
# Wall Mounting Kit

## for OSA 55–200 RK

## Installation Instructions

**Fig. 1**

### Wall Mounting Brackets



#### GENERAL

The OSA 55–200 Outdoor Units can be mounted on a wall using this set of optional wall mounting brackets, supplied as a kitset.

**Note:** The are not suitable for use with vertical discharge versions.

#### COMPONENTS

Check that the following items are supplied and are in good order:

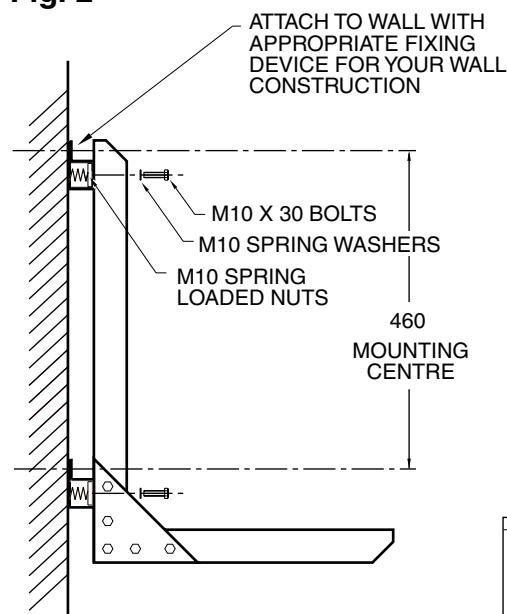
1. Two rear wall rails
2. Two front wall rails
3. Two vertical rails
4. Two horizontal brackets
5. Four gussets
6. Twenty-four M8 x 20 bolts
7. Twenty-four M8 nuts
8. Twenty-four M8 washers.
9. Four M10 x 30 bolts
10. Four M10 spring washers
11. Four M10 spring loaded nuts

The kit does not include bracket-to-wall fixing devices as these will be dependant on the walls construction.

Recommended fixing devices are:  
 - for timber walls :  $\varnothing 10 \times 100$  coach screws  
 - for concrete walls :  $\varnothing 10 \times 100$  dyna bolts  
 - for masonry walls :  $\varnothing 10 \times 100$  dyna bolts

**Fig. 2**

### Wall Mounting Centres



#### DIMENSIONS (mm)

MODEL	A
OSA 55	548
OSA 80	548
OSA 83/95	686
OSA 110	582
OSA 140	714
OSA 160	750
OSA 175/200H	765

#### INSTALLATION

##### Positioning

Check the installation instructions that came with the OSA unit for clearance required to each side of the unit. The wall mounting brackets have a built-in allowance for clearance on the coil side of the OSA unit and a slope for better condensate drainage. At least two metres must be allowed in front of the unit to allow air to escape without being re-circulated back behind the unit into the coil. A vertical discharge grille is available to reduce the front clearance to 600 mm.

##### Mounting

1. Assemble the 'L' shaped brackets as shown in figure 1 using the appropriate number of bolts for the gussets supplied.
2. Using suitable fasteners (dependent on wall construction) fasten the two sets of horizontal front and rear wall rails to the wall. Mounting centres are given in Fig.2.
3. Use the mounting centre given for your OSA unit to determine the correct spacing between each assembled bracket. Secure each bracket rail to the horizontally secured wall rails using the nuts and bolts supplied (see Fig.2).
4. Mount OSA unit on the bracket styles.
5. Align the unit's mounting rail holes with those in the wall brackets.
6. Fasten the unit to the brackets with the four M8 x 20 bolts and nuts provided.

#### Note

The manufacturer reserves the right to change specifications at any time without notice or obligation. Certified dimensions available on request.

This pamphlet replaces the previous issue no. 3315 dated 02/10. OSA 55/80 dim.A.

