

Indoor Unit (525-501-712)	ISD 294KYX
Outdoor Unit (536-501-312)	OSA 294RKTGV (digital)
Cooling capacity (net) to AS/NZS 3823 T1	27.5 kW
Heating capacity H1	28.2 kW
Electrical input - cooling	8.8 kW
Electrical input - heating	8.2 kW
EER / AEER (cooling)	3.12 / 3.10
COP / ACOP (heating)	3.43 / 3.41
Unit Controllers	UC8 / IUC
Refrigerant	R410A
Refrigerant precharge for 10 m	13 kg
Additional charge req'd for over 10 m	100 g/m
Base refrigerant charge OSA	12 kg
Maximum line length	90 m
Separation limit: OSA above ISD	20 m
Separation limit: OSA below ISD	20 m
Suction line	28 mm OD
Liquid line	13 mm OD
Compressor oil type	POE 32-3MAF (or equivalent)
Additional oil charge over 40m line length	20 ml/m
Compressor type	digital scroll
Power supply via OSA	3 ph. 400V ac 50Hz
Compressor (3ph.) run amps at rating cond.	14.2 A
Compressor overload setting	16.5 A
Indoor fan motor size	900W + 1250W
Rated indoor fan speed	MED
Indoor fan motor (1ph.) - full load	10 A
Outdoor fan motor (1ph.) - full load	3 A
Outdoor fan capacitor size	6 μ fd (x2)
Control circuit breaker (internal)	20 A
Running amps (total system)	18.5 / 14 / 14 A
Max. running amps (total system)	23 / 17 / 17 A
Net weight ISD	127 kg
Net weight OSA	245 kg

Accessories:

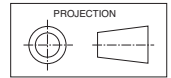
ISD Spring mounting kit	307-341-101
ISD Filter box c/w EU2/G2 filter (NZ only)	493-000-016
ISD Replacement filter (NZ only)	019-400-003 (x3)
ISD Supply air plenum Ø400 x 4 (NZ only)	492-000-030
ISD Return air plenum Ø400 x 4 (NZ only)	492-100-008
ISD Fresh air inlet spigot Ø200 (NZ only)	325-000-052
OSA Drain connection adaptor 25/13mm	060-000-039
OSA Anti-vibration mounts - rubber (x4)	060-000-170

Optional Controls:

SAT-3 Room temperature controller	201-000-146
Six Zone Control kit for SAT-3	201-000-073
TZT-100 Room temperature controller	201-000-350

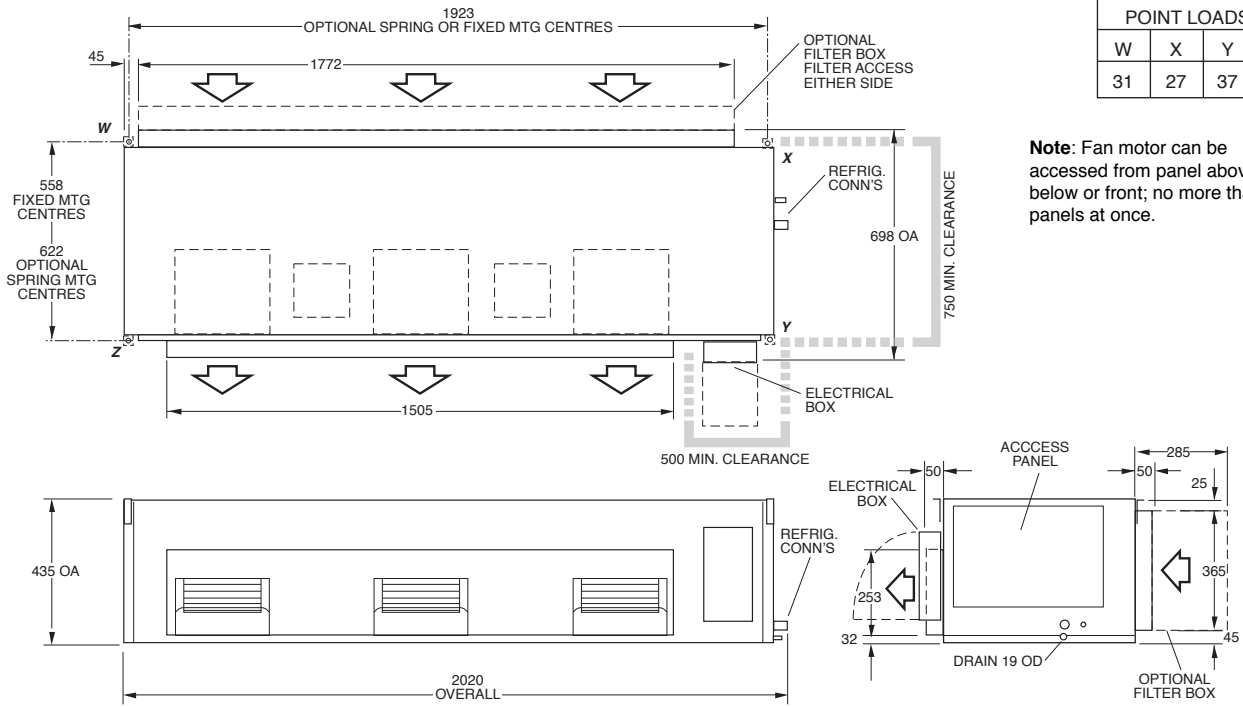
Refer to temperzone for other options, eg remote sensors, connection wires.

DIMENSIONS (mm)



Not to Scale

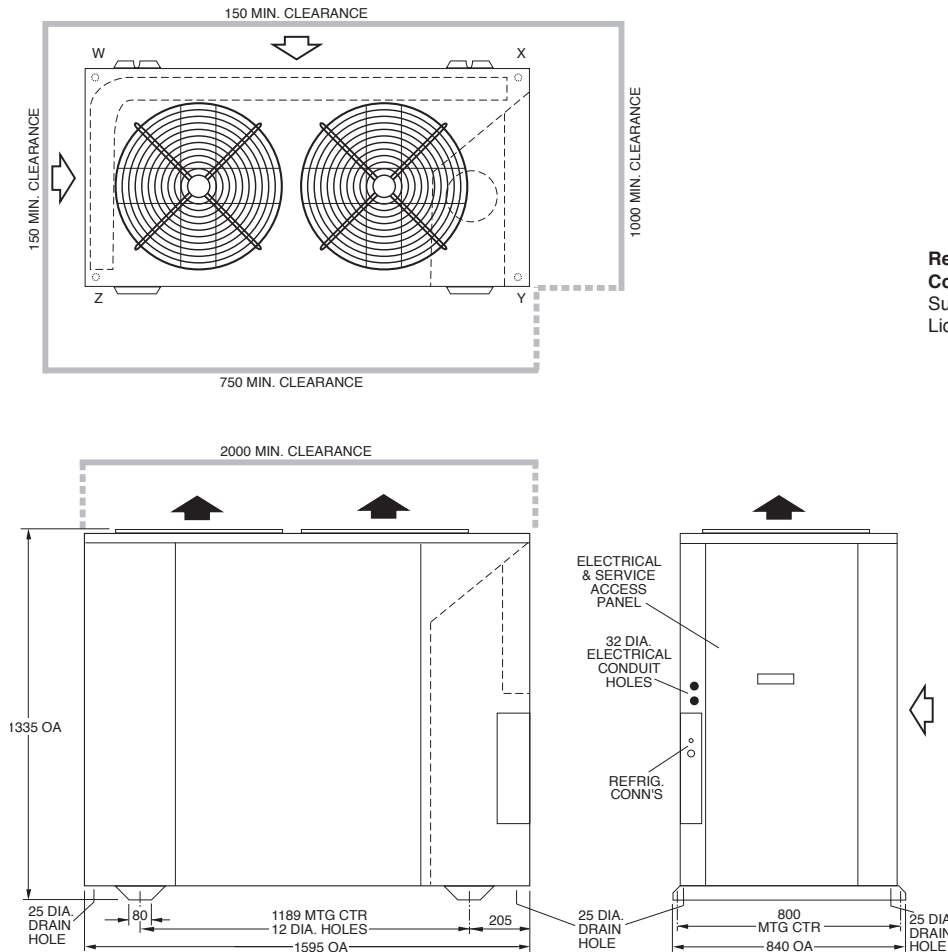
ISD 294KYX Indoor Unit



POINT LOADS (kg)			
W	X	Y	Z
31	27	37	32

Note: Fan motor can be accessed from panel above, below or front; no more than two panels at once.

OSA 294RKTGV Outdoor Unit



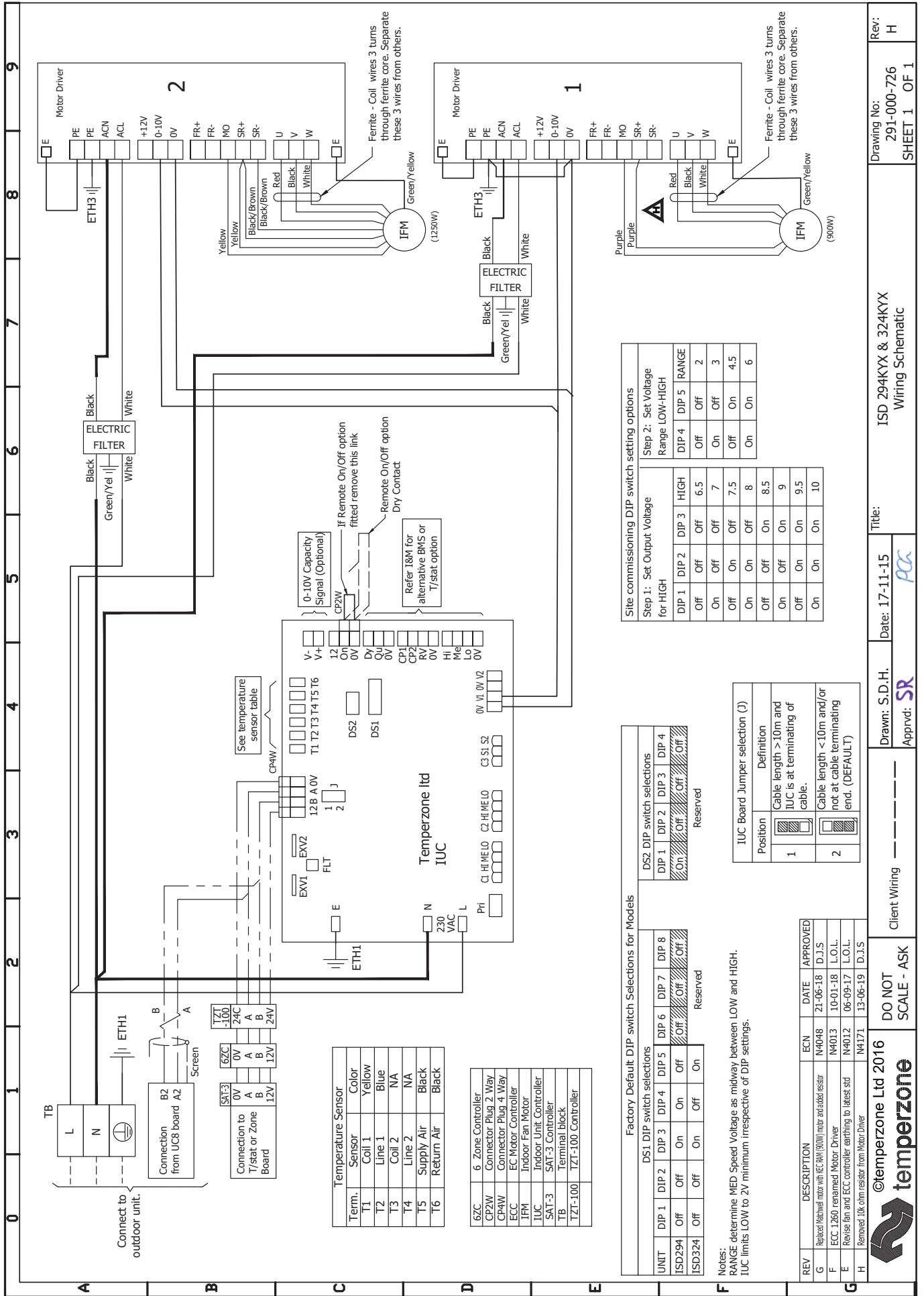
POINT LOADS (kg)			
W	X	Y	Z
49	87	60	49

Recommended Connecting Pipe Sizes
 Suction : 28 mm OD
 Liquid : 13 mm OD

NOTE

Specifications are subject to change without notice due to the manufacturer's ongoing research and development programme.





Term.	Sensor	Color
T1	Coil 1	Yellow
T2	Line 1	Blue
T3	Coil 2	NA
T4	Line 2	NA
T5	Supply Air	Black
T6	Return Air	Black

6ZC	6 Zone Controller
CP2W	Connector Plug 2 Way
CP4W	Connector Plug 4 Way
ECC	EC Motor Controller
IFM	Indoor Fan Motor
IUC	Indoor Unit Controller
SAT-3	SAT-3 Controller
TB	Terminal block
TZT-100	TZT-100 Controller

Factory Default DIP switch Selections for Models								
DS1 DIP switch selections			DS2 DIP switch selections			Reserved		
UNIT	DIP 1	DIP 2	DIP 3	DIP 4	DIP 5	DIP 6	DIP 7	DIP 8
ISD294	Off	Off	On	Off	Off	Off	Off	Off
ISD324	Off	Off	On	Off	On	Off	Off	Off

Notes:
 RANGE determine MED Speed Voltage as midway between LOW and HIGH.
 IUC limits LOW to 2V minimum irrespective of DIP settings.

Position	Definition
1	Cable length > 10m and IUC is at terminating of cable.
2	Cable length < 10m and/or not at cable terminating end. (DEFAULT)

Site commissioning DIP switch setting options					
Step 1: Set Output Voltage for HIGH			Step 2: Set Voltage Range LOW-HIGH		
DIP 1	DIP 2	DIP 3	DIP 4	DIP 5	RANGE
Off	Off	Off	Off	Off	2
On	Off	Off	Off	Off	3
Off	On	Off	Off	Off	4.5
On	On	Off	On	On	6
Off	Off	On	On	On	8.5
On	Off	On	On	On	9
Off	On	On	On	On	9.5
On	On	On	On	On	10

©temperzone Ltd 2016

temperzone

Client Wiring

DO NOT SCALE - ASK

Drawn: S.D.H. Date: 17-11-15

Approved: *SR*

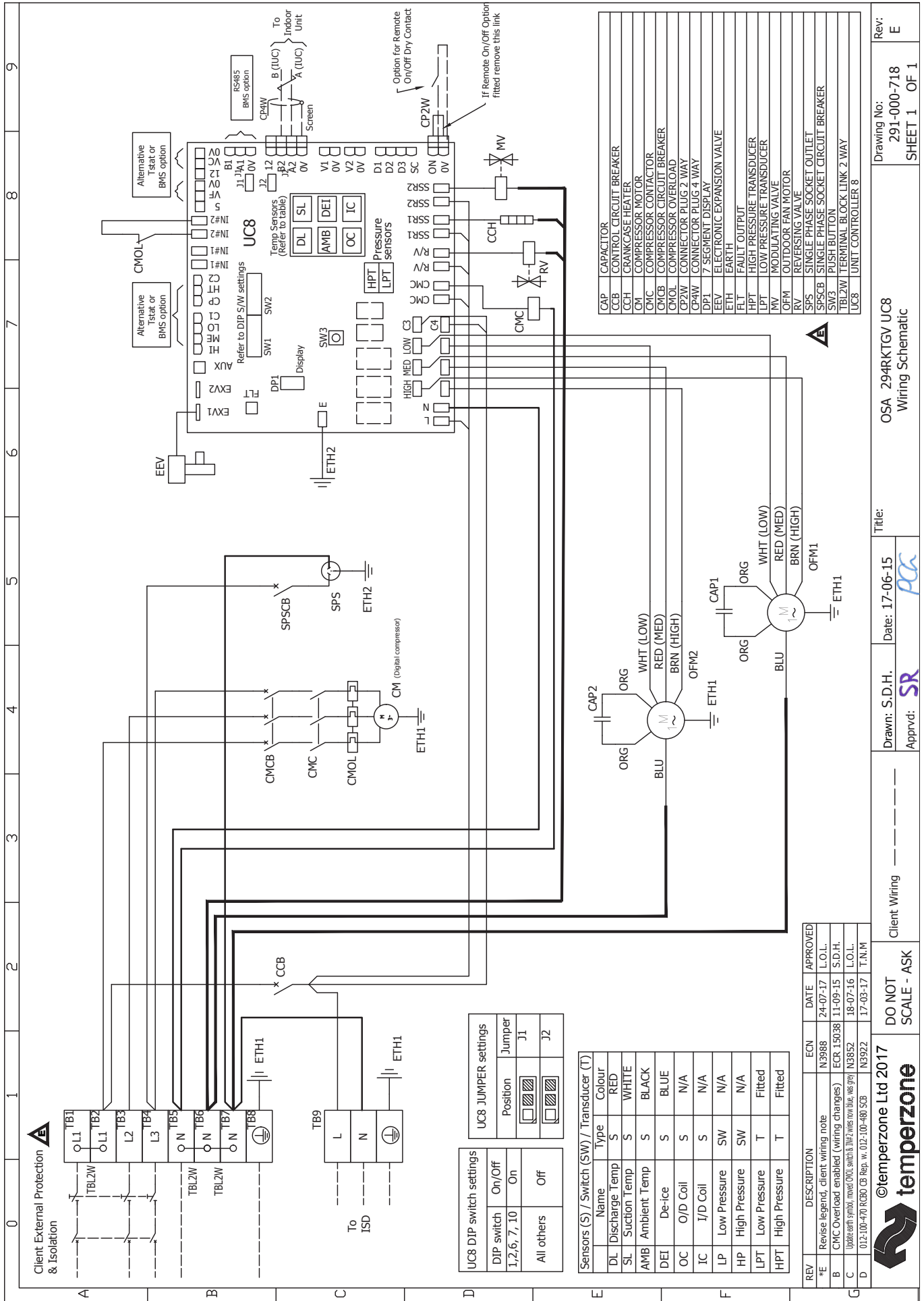
Title: ISD 294KXX & 324KXX Wiring Schematic

Drawing No: 291-000-726 SHEET 1 OF 1

Rev: H

OUTDOOR UNIT WIRING

Indoor-Outdoor Connection Wiring: refer 'Installation & Maintenance' pamphlet, page 6.



Rev: E

Drawing No: OSA 294RKTGV UC8

Wiring Schematic

Date: 17-06-15

Drawn: S.D.H.

Approved: SR

Client Wiring

DO NOT SCALE - ASK

©temperzone Ltd 2017

temperzone