

Indoor Unit (525-561-712)	ISD 324KYX
Outdoor Unit (536-561-312)	OSA 324RKTGV (digital)
Cooling capacity (net) to AS/NZS 3823 T1	31.5 kW
Heating capacity H1	30.3 kW
Electrical input - cooling	10.1 kW
Electrical input - heating	7.9 kW
EER / AEER (cooling)	3.12 / 3.10
COP / ACOP (heating)	3.84 / 3.82
Unit Controllers	UC8 / IUC
Refrigerant	R410A
Refrigerant precharge for 10 m	12.5 kg
Additional charge req'd for over 10 m	100 g/m
Base refrigerant charge OSA	11.5 kg
Maximum line length	90 m
Separation limit: OSA above ISD	20 m
Separation limit: OSA below ISD	20 m
Suction line	28 mm OD
Liquid line	13 mm OD
Compressor oil type	POE 32-3MAF (or equivalent)
Additional oil charge over 40m line length	20 ml/m
Compressor type	digital scroll
Power supply via OSA	3 ph. 400V ac 50Hz
Compressor (3ph.) run amps at rating cond.	16 A
Compressor overload setting	20 A
Indoor fan motor size	900W + 1250W
Rated indoor fan speed	MED
Indoor fan motor (1ph.) - full load	12.5 A
Outdoor fan motor (1ph.) - full load	1.5 A (x2)
Outdoor fan capacitor size	6 μ fd (x2)
Control circuit breaker (internal)	20 A
Running amps (total system)	22 / 16.0 / 15.3 A
Max. running amps (total system)	34 / 19.4 / 18.4 A
Net weight ISD	143 kg
Net weight OSA	245 kg

Accessories:

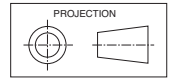
ISD Spring mounting kit	307-341-101
ISD Filter box c/w EU4/G4 filter (NZ only)	493-000-017
ISD Replacement filter (NZ only)	119-400-006 (x3)
ISD Supply air plenum Ø400 x 5 (NZ only)	492-000-031
ISD Return air plenum Ø400 x 5 (NZ only)	492-100-009
ISD Fresh air inlet spigot Ø200 (NZ only)	325-000-052
OSA Drain connection adaptor 25/13mm	060-000-039
OSA Anti-vibration mounts - rubber (x4)	060-000-170

Optional Controls:

SAT-3 Room temperature controller	201-000-146
Six Zone Control kit for SAT-3	201-000-073
TZT-100 Room temperature controller	201-000-350

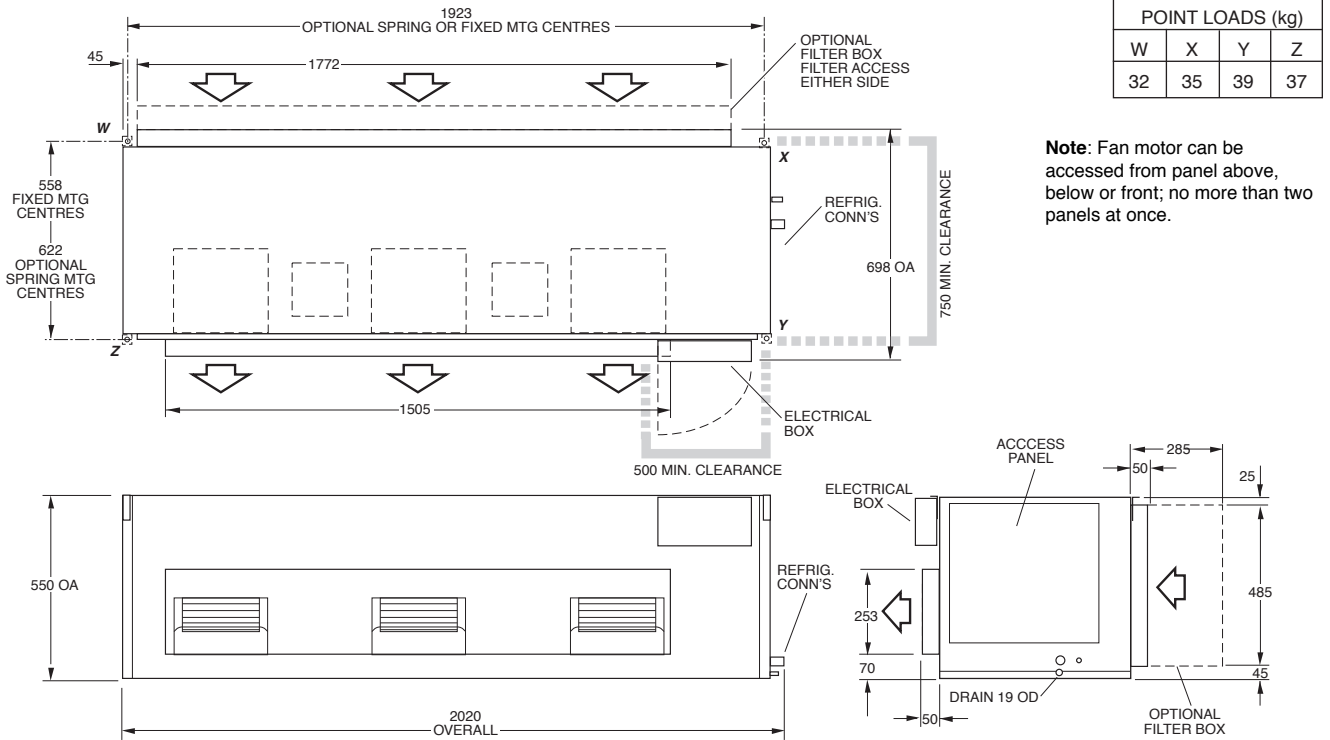
Refer to temperzone for other options, eg remote sensors, connection wires.

DIMENSIONS (mm)

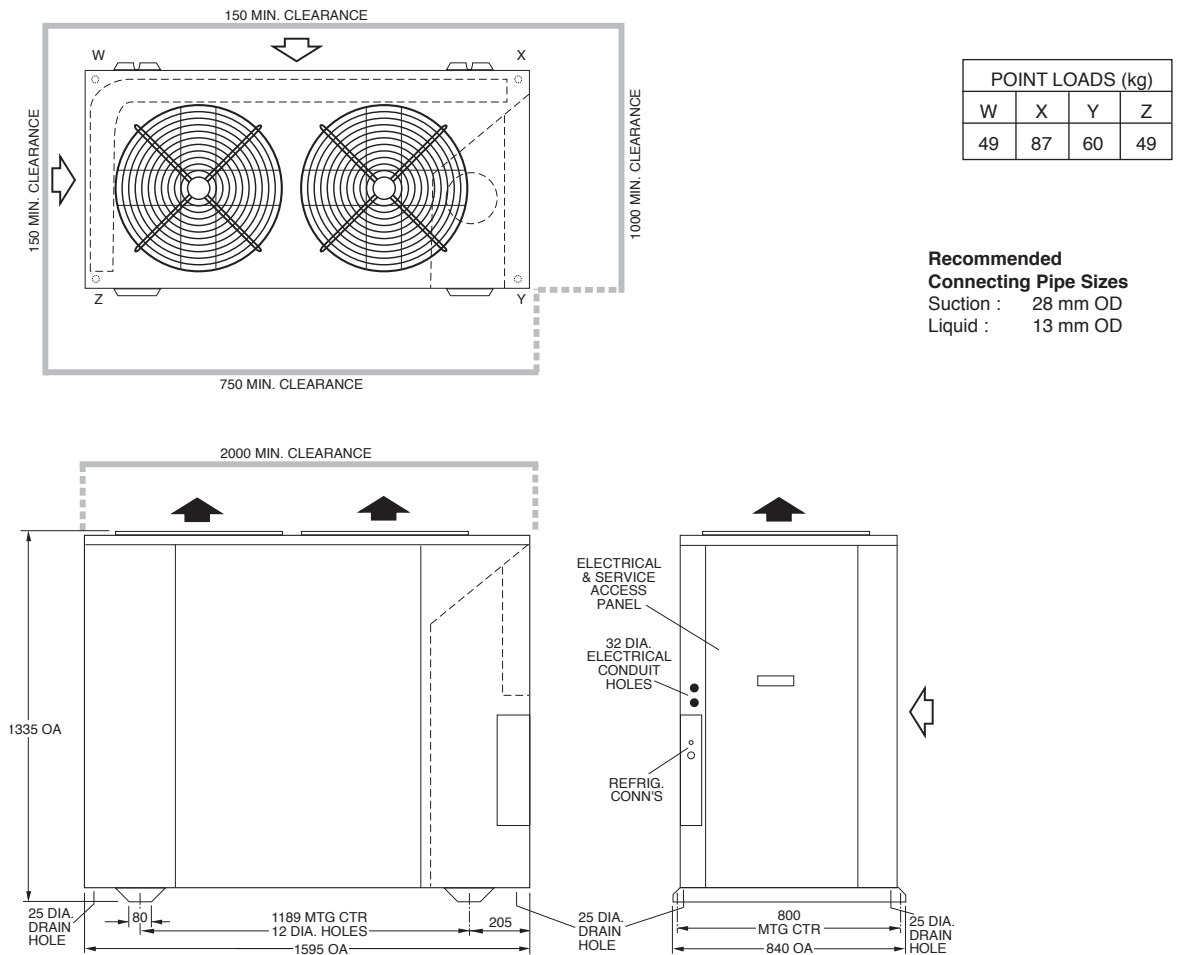


Not to Scale

ISD 324KYX Indoor Unit

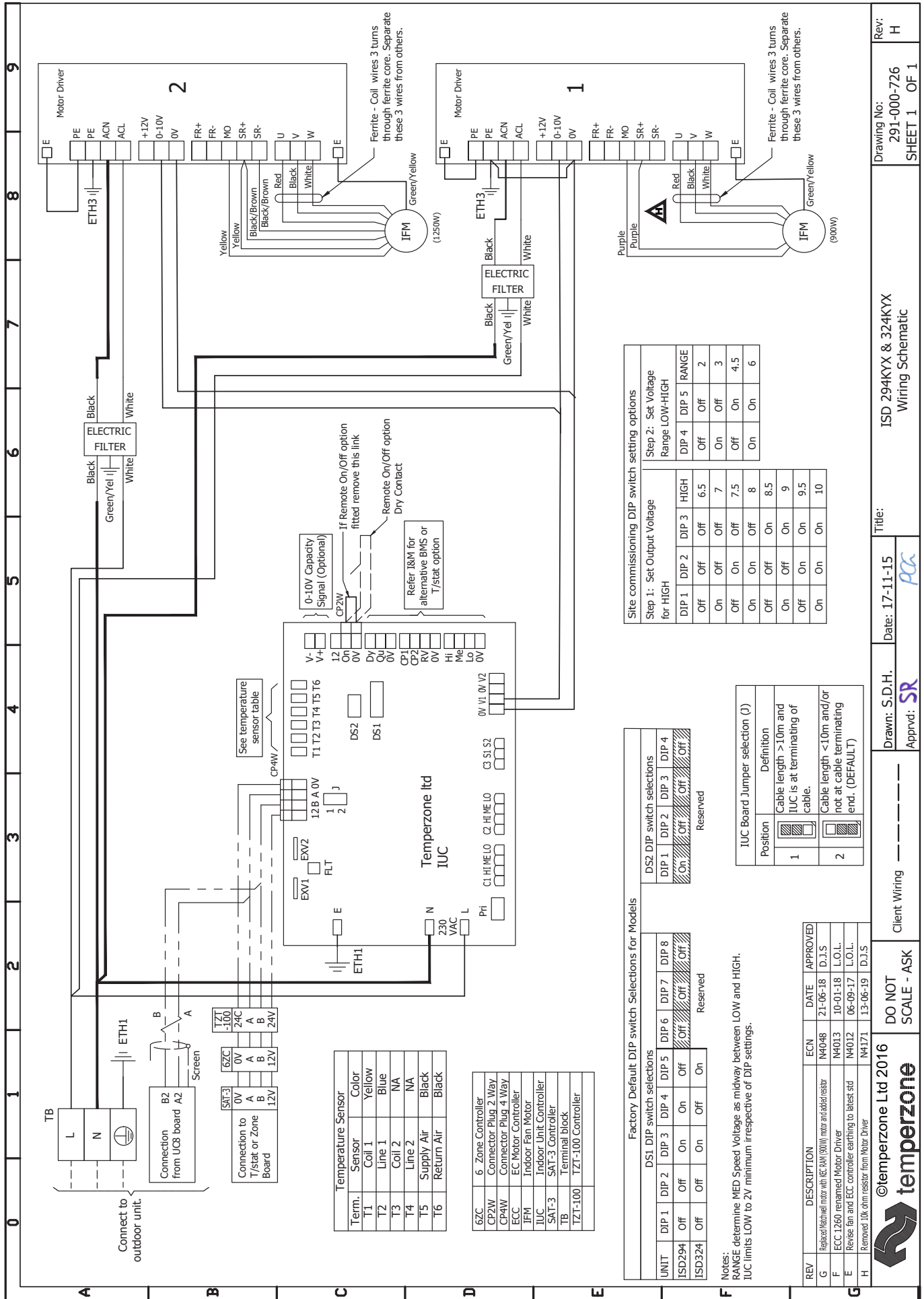


OSA 324RKTGV Outdoor Unit



NOTE

Specifications are subject to change without notice due to the manufacturer's ongoing research and development programme.



Term.	Sensor	Color
T1	Coil 1	Yellow
T2	Line 1	Blue
T3	Coil 2	NA
T4	Line 2	NA
T5	Supply Air	Black
T6	Return Air	Black

6ZC	6 Zone Controller
CP2W	Connector Plug 2 Way
CP4W	Connector Plug 4 Way
ECC	EC Motor Controller
IFM	Indoor Fan Motor
IUC	Indoor Unit Controller
SAT-3	SAT-3 Controller
TB	Terminal block
TZT-100	TZT-100 Controller

Factory Default DIP switch Selections for Models								
UNIT	DIP 1	DIP 2	DIP 3	DIP 4	DIP 5	DIP 6	DIP 7	DIP 8
ISD294	Off	Off	On	Off	Off	Off	Off	Off
ISD324	Off	Off	On	Off	On	Reserved	Reserved	Reserved

DS2 DIP switch selections				
DIP 1	DIP 2	DIP 3	DIP 4	Reserved
On	Off	Off	Off	Off

Notes:
 RANGE determine MED Speed Voltage as midway between LOW and HIGH.
 IUC limits LOW to 2V minimum irrespective of DIP settings.

Site commissioning DIP switch setting options									
Step 1: Set Output Voltage for HIGH					Step 2: Set Voltage Range LOW-HIGH				
DIP 1	DIP 2	DIP 3	DIP 4	DIP 5	RANGE	DIP 4	DIP 5	RANGE	DIP 4
Off	Off	Off	Off	Off	6.5	Off	Off	2	Off
On	On	On	On	On	7	On	Off	3	On
Off	On	Off	Off	Off	7.5	Off	On	4.5	Off
On	On	On	On	On	8	On	On	6	On
Off	Off	On	On	On	8.5	Off	On	9	Off
On	Off	Off	On	On	9	On	On	9.5	On
Off	On	On	On	On	10	Off	On	10	Off

IUC Board Jumper selection (J)	
Position	Definition
1	Cable length > 10m and IUC is at terminating of cable.
2	Cable length < 10m and/or not at cable terminating end. (DEFAULT)

Drawing No: 291-000-726
 SHEET 1 OF 1

Title: ISD 294KYX & 324KYX Wiring Schematic

Date: 17-11-15
 Drawn: S.D.H.
 Approved: SR

Client Wiring

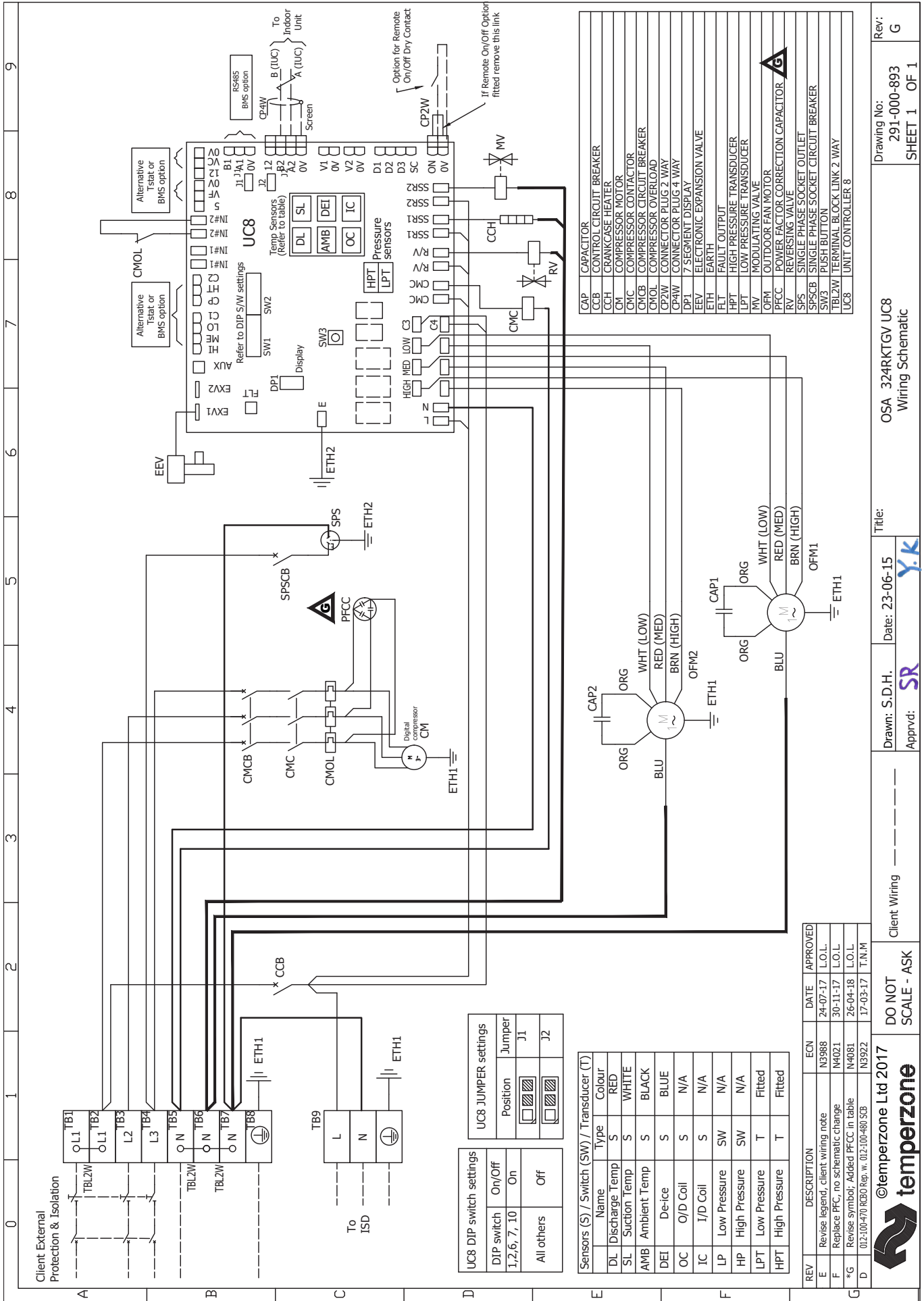
DO NOT SCALE - ASK

©temperzone Ltd 2016

Rev: H

OUTDOOR UNIT WIRING

Indoor-Outdoor Connection Wiring: refer 'Installation & Maintenance' pamphlet, page 6.



UC8 DIP switch settings	
DIP switch	On/Off
1,2,6,7,10	On
All others	Off

UC8 JUMPER settings	
Position	Jumper
	J1
	J2

Sensors (S) / Switch (SW) / Transducer (T)		
Name	Type	Colour
DL Discharge Temp	S	RED
SL Suction Temp	S	WHITE
AMB Ambient Temp	S	BLACK
DEI De-ice	S	BLUE
OC O/D Coil	S	N/A
IC I/D Coil	S	N/A
LP Low Pressure	SW	N/A
HP High Pressure	SW	N/A
LPT Low Pressure	T	Fitted
HPT High Pressure	T	Fitted

REV	DESCRIPTION	ECN	DATE	APPROVED
E	Revise legend, client wiring note	N3988	24-07-17	L.O.L.
F	Replace PFC, no schematic change	N4021	30-11-17	L.O.L.
*G	Revise symbol; Added PFC in table	N4081	26-04-18	L.O.L.
D	012-100-470 RCB0 Rep. w. 012-100-480 5CB	N3922	17-03-17	T.N.M

©temperzone Ltd 2017

Client Wiring
 DO NOT SCALE - ASK

Drawn: S.D.H.
 Approved: SR

Date: 23-06-15

Title: OSA 324RKTGV UC8
 Wiring Schematic

Drawing No: 291-000-893
 SHEET 1 OF 1
 Rev: G