

SPECIFICATIONS



Model	HWP 275RKT
Item No. (Standard / Opposite Hand)	509-275-001 / 509-275-011
Cooling capacity (net) to AS/NZS 3823 T1	26.9 kW
Heating capacity H1	24.6 kW
Electrical input - cooling	6.4 kW
Electrical input - heating	5.9 kW
EER / AEER (cooling)	4.23 / 4.22
COP / ACOP (heating)	4.13 / 4.12
Unit Controller	UC8
Refrigerant	R410A
Refrigerant charge	3.5 kg
Compressor type	scroll
Water connections	1" male BSP
Nominal EWT/EAT on cooling	30°C / 27°C db, 19°C wb
Nominal EWT/EAT on heating	20°C / 20°C
Nominal Water Flow @ EWT – LWT = 5k	1.63 l/s
Entering system pressure drop @ nominal flow	55 kPa (8 psi)
Min. water temp. Heat cycle at nominal flow & EAT	10°C
Min. water temp. Cool cycle at nominal flow & EAT	15°C
Min. water temp. Cool cycle with water flow control valve	5°C
Max. EWT Heat cycle at nominal flow & EAT	30°C
Max. EWT Cool cycle at nominal flow & EAT	50°C
Min. water flow @ nominal EWT & EAT	0.46 l/s
Max. water pressure – excluding hoses	3200 kPa (464 psi)
Power supply	3 ph. 400V ac 50Hz
Compressor run amps at rating cond.	9 A/ph.
Indoor fan motor size	550 W (x2)
Indoor fan motor (1ph.) - full load	3.7 A (x2)
Control circuit breaker (internal)	10 A
Running amps (total system)	15 / 9.5 / 9.5 A
Max. running amps (total system)	21 / 13.5 / 13 A
Net weight	199 kg

Accessories:

Spring mounts	supplied
Water hoses 800mm long, rated 2070 kPa (300 psi)	1" female BSP, supplied
Replacement filter EU2 rated (2 required)	119-000-105 799x405x13
Condensate lift-pump	507-003-010

Optional:

SAT-3 Room temperature controller	201-000-146
TZT-100 Room temperature controller	201-000-350

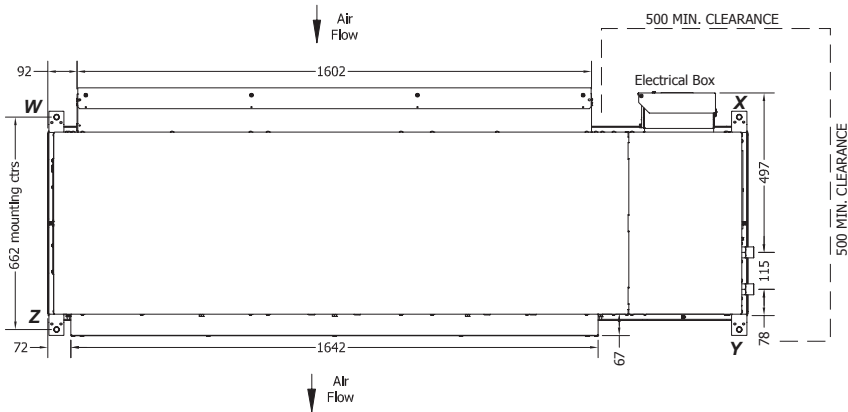
Refer to temperzone for other options, eg remote sensors

DIMENSIONS (mm)



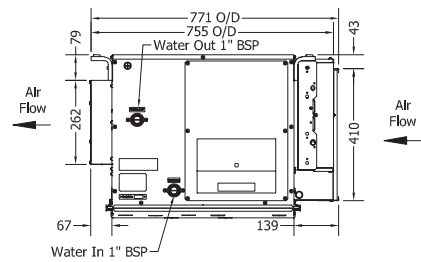
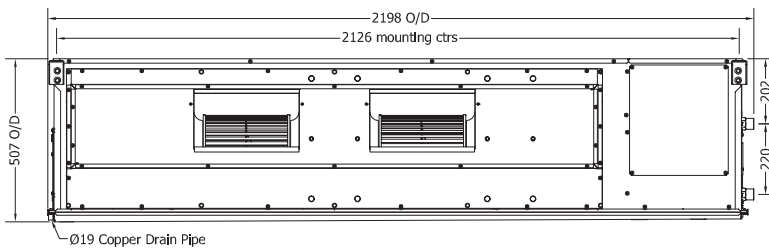
Not to Scale

HWP 275RKT Standard



POINT LOADS (kg)			
W	X	Y	Z
33	74	55	38

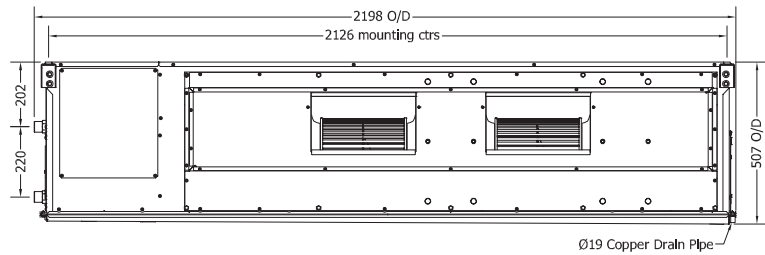
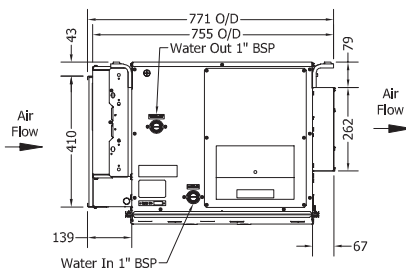
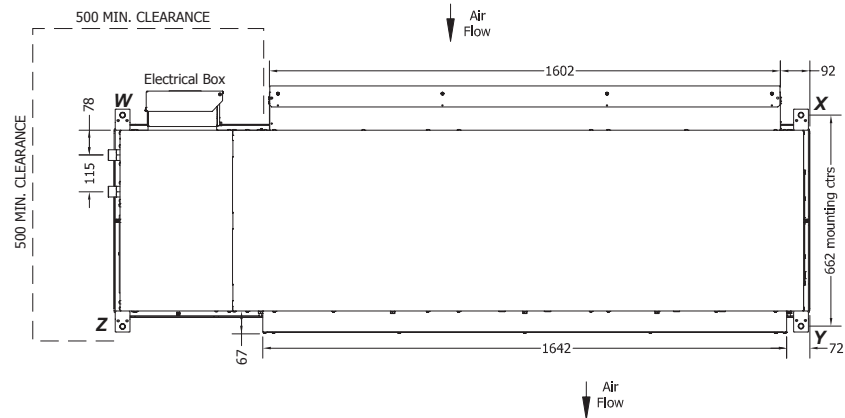
Note: Fan motor can be accessed from panel above, below or sides; no more than two panels at once.



HWP 275RKT Opposite Hand

POINT LOADS (kg)			
W	X	Y	Z
55	33	38	74

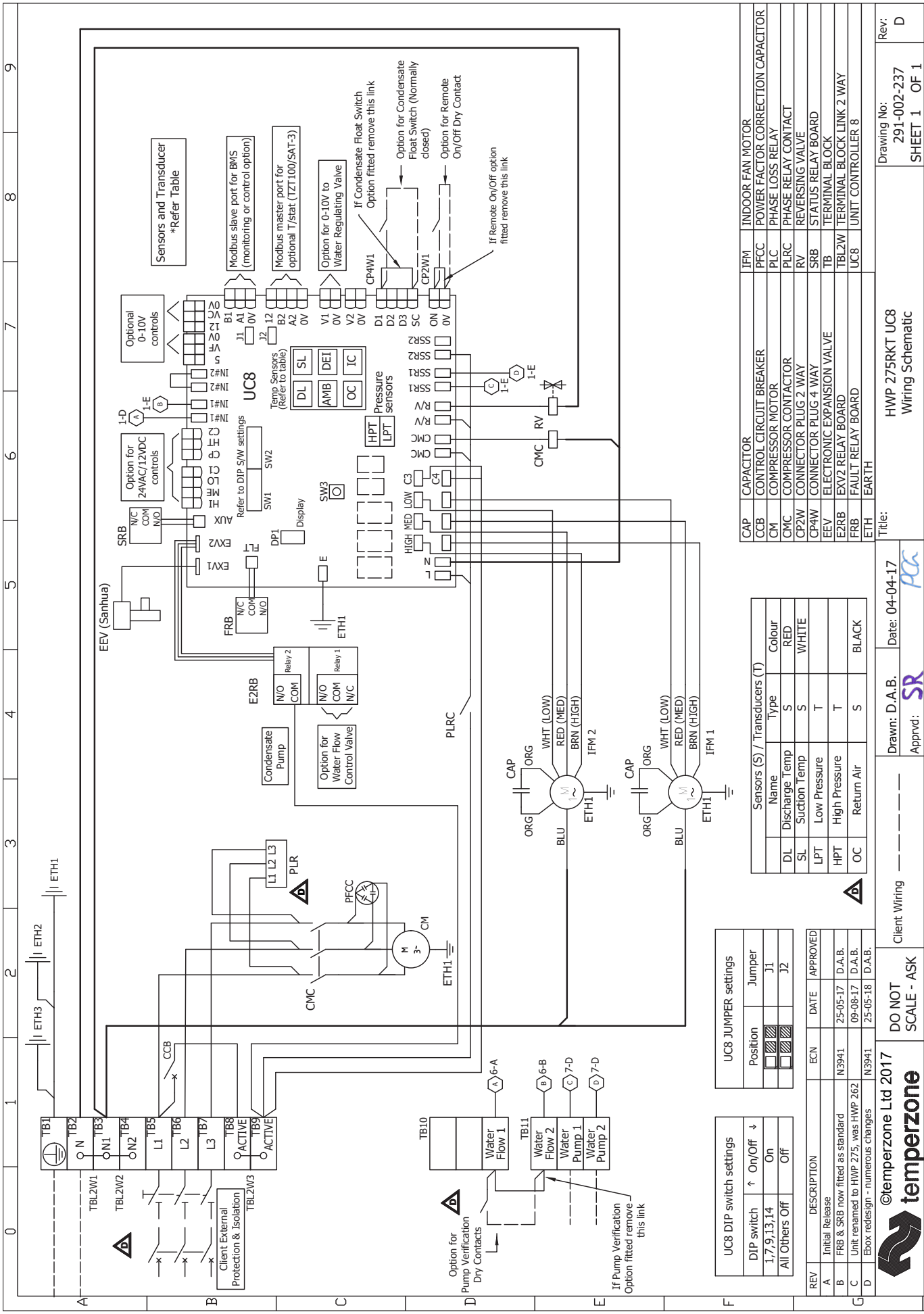
Note: Fan motor can be accessed from panel above, below or sides; no more than two panels at once.



NOTE

Specifications are subject to change without notice due to the manufacturer's ongoing research and development programme.





CAP	CAPACITOR	IFM	INDOOR FAN MOTOR
CCB	CONTROL CIRCUIT BREAKER	PLC	POWER FACTOR CORRECTION CAPACITOR
CM	COMPRESSOR MOTOR	PLRC	PHASE LOSS RELAY
CMC	COMPRESSOR CONTACTOR	RV	REVERSING VALVE
CP2W	CONNECTOR PLUG 2 WAY	SRB	STATUS RELAY BOARD
CP4W	CONNECTOR PLUG 4 WAY	TB	TERMINAL BLOCK
EEV	ELECTRONIC EXPANSION VALVE	TBL2W	TERMINAL BLOCK LINK 2 WAY
E2RB	EXV2 RELAY BOARD	UC8	UNIT CONTROLLER 8
FRB	FAULT RELAY BOARD		
ETH	EARTH		

Sensors (S) / Transducers (T)		
Name	Type	Colour
DL	Discharge Temp	RED
SL	Suction Temp	WHITE
LPT	Low Pressure	T
HPT	High Pressure	T
OC	Return Air	BLACK

UC8 JUMPER settings		
Position	Jumper	DATE
J1	APPROVED	
J2		

REV	DESCRIPTION	ECN	DATE	APPROVED
A	Initial Release			
B	FRB & SRB now fitted as standard	N3941	25-05-17	D.A.B.
C	Unit renamed to HWP 275, was HWP 262		09-08-17	D.A.B.
D	Ebox redesign - numerous changes	N3941	25-05-18	D.A.B.

temperzone
 ©temperzone Ltd 2017
 Client Wiring
 DO NOT SCALE - ASK
 Drawn: D.A.B. Date: 04-04-17
 Approved: *SR*
 Title: HWP 275RKT UC8 Wiring Schematic
 Drawing No: 291-002-237
 Rev: D
 SHEET 1 OF 1

SPECIFICATIONS



Model	HWP 275CKT	HWP 275CEKT
Item No. - Standard	509-275-101	509-275-102
Item No. - Opposite Hand	509-275-111	509-275-112
Cooling capacity (net) to AS/NZS 3823 T1	27.0 kW	
Heating capacity - Electric heat	n/a	12.0 kW
Electrical input - cooling	6.2 kW	
Electrical input - heating	n/a	13.4 kW
EER / AEER (cooling)	4.31 / 4.31	
Unit Controller	UC8	
Refrigerant	R410A	
Refrigerant charge	3.1 kg	
Compressor type	scroll	
Water connections	1" male BSP	
Nominal EWT on cooling	30°C	
Nominal Water Flow @ EWT – LWT = 5k	1.63 l/s	
Entering system pressure drop @ nominal flow	55 kPa (8 psi)	
Min. water temp. Cool cycle at nominal flow	15°C	
Min. water temp. Cool cycle with water flow control valve	5°C	
Max. EWT Cool cycle at nominal flow	50°C	
Min. water flow @ nominal EWT	0.46 l/s	
Max. water pressure – excluding hoses	3200 kPa (464 psi)	
Power supply	3 ph. 400V ac 50Hz	
Compressor run amps at rating cond.	9 A/ph.	
Indoor fan motor size	550 W (x2)	
Indoor fan motor (1ph.) - full load	3.7 A (x2)	
Control circuit breaker (internal)	10 A	
Running amps (total system)	15 / 9.5 / 9.5 A	24 / 17.5 / 17.5 A
Max. running amps (total system)	21 / 13.5 / 13 A	25 / 17.5 / 17.5 A
Net weight	199 kg	199 kg

Accessories:

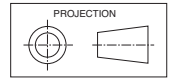
Spring mounts	supplied
Water hoses 800mm long, rated 2070kPa (300psi)	1" female BSP, supplied
Replacement filter EU2 rated (2 required)	119-000-105 799x405x13
Condensate lift-pump	507-003-010

Optional:

SAT-3 Room temperature controller	201-000-146
TZT-100 Room temperature controller	201-000-350

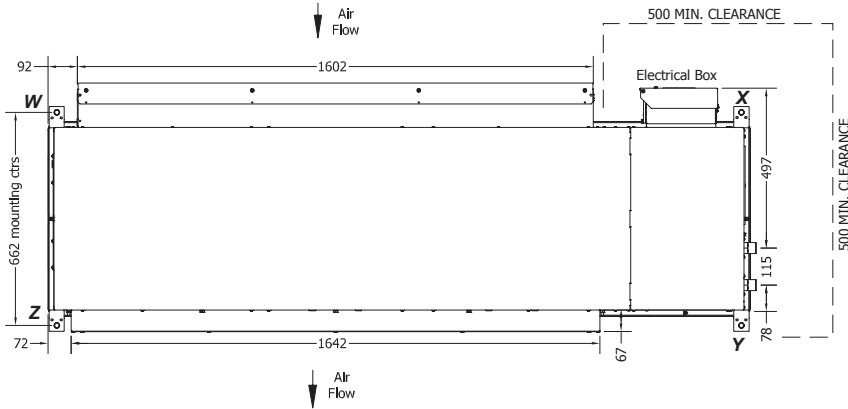
Refer to temperzone for other options, eg remote sensors

DIMENSIONS (mm)



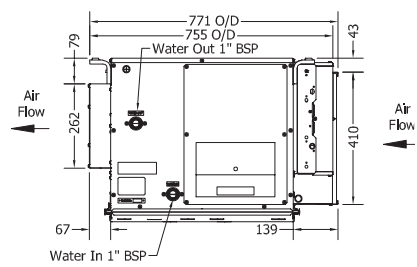
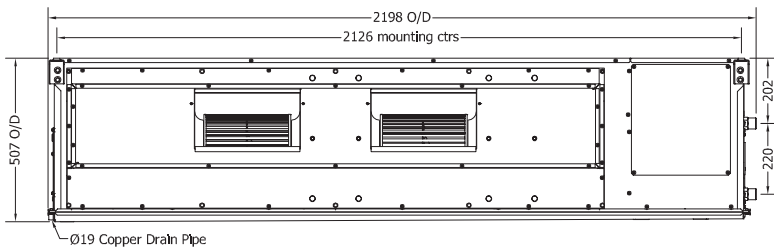
Not to Scale

HWP 275 CKT/CEKT Standard



POINT LOADS (kg)			
W	X	Y	Z
33	74	55	38

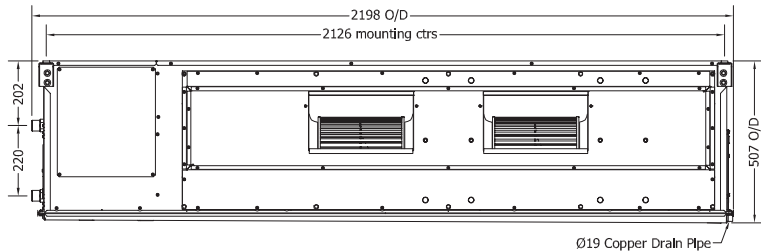
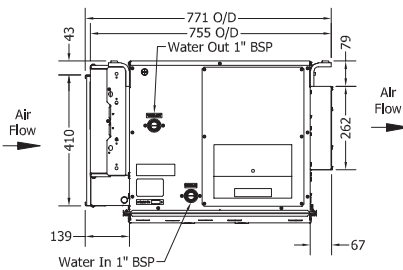
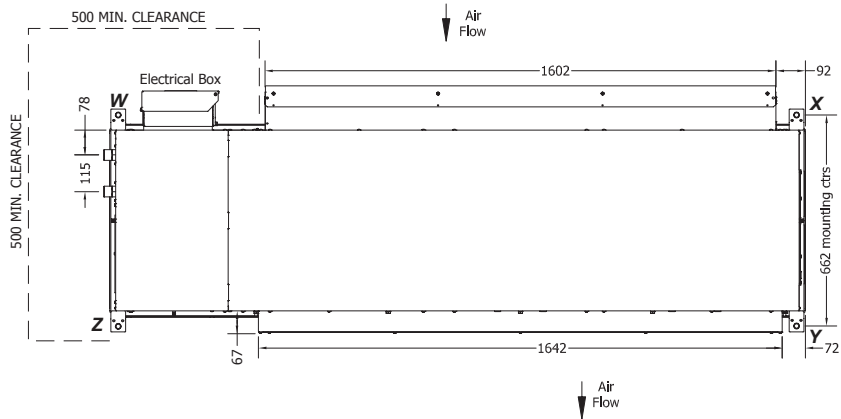
Note: Fan motor can be accessed from panel above, below or sides; no more than two panels at once.



HWP 275 CKT/CEKT Opposite Hand

POINT LOADS (kg)			
W	X	Y	Z
55	33	38	74

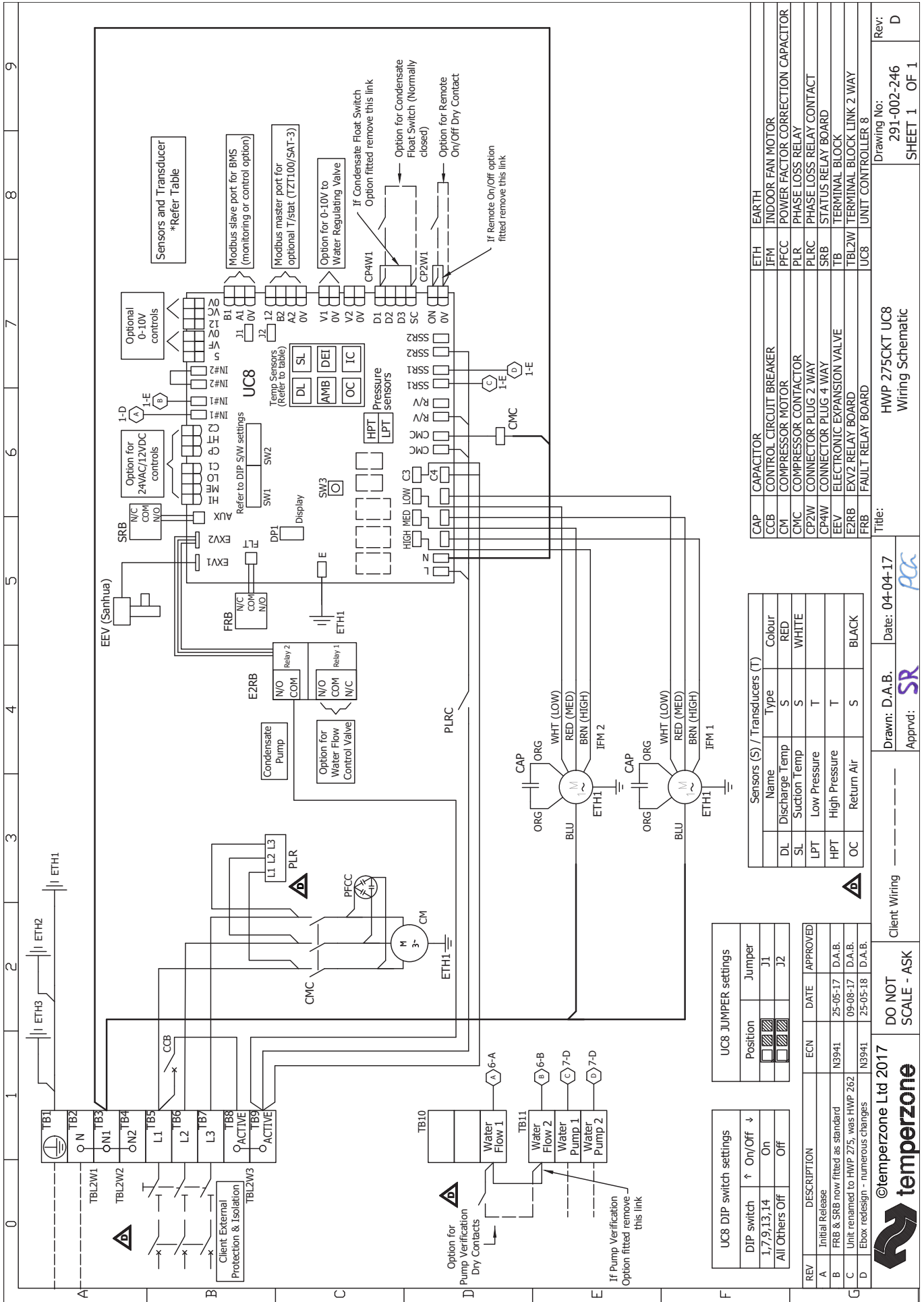
Note: Fan motor can be accessed from panel above, below or sides; no more than two panels at once.



NOTE

Specifications are subject to change without notice due to the manufacturer's ongoing research and development programme.





UC8 Terminal	Function
ETH	EARTH
IFM	INDOOR FAN MOTOR
PFCC	POWER FACTOR CORRECTION CAPACITOR
PLR	PHASE LOSS RELAY
PLRC	PHASE LOSS RELAY CONTACT
CP2W	CONNECTOR PLUG 2 WAY
CP4W	CONNECTOR PLUG 4 WAY
E2R0	ELECTRONIC EXPANSION VALVE
E2R1	EXV2 RELAY BOARD
E2R2	EXV2 RELAY BOARD
FRB	FAULT RELAY BOARD
SRB	STATUS RELAY BOARD
TB	TERMINAL BLOCK
TBL2W	TERMINAL BLOCK LINK 2 WAY
UC8	UNIT CONTROLLER 8

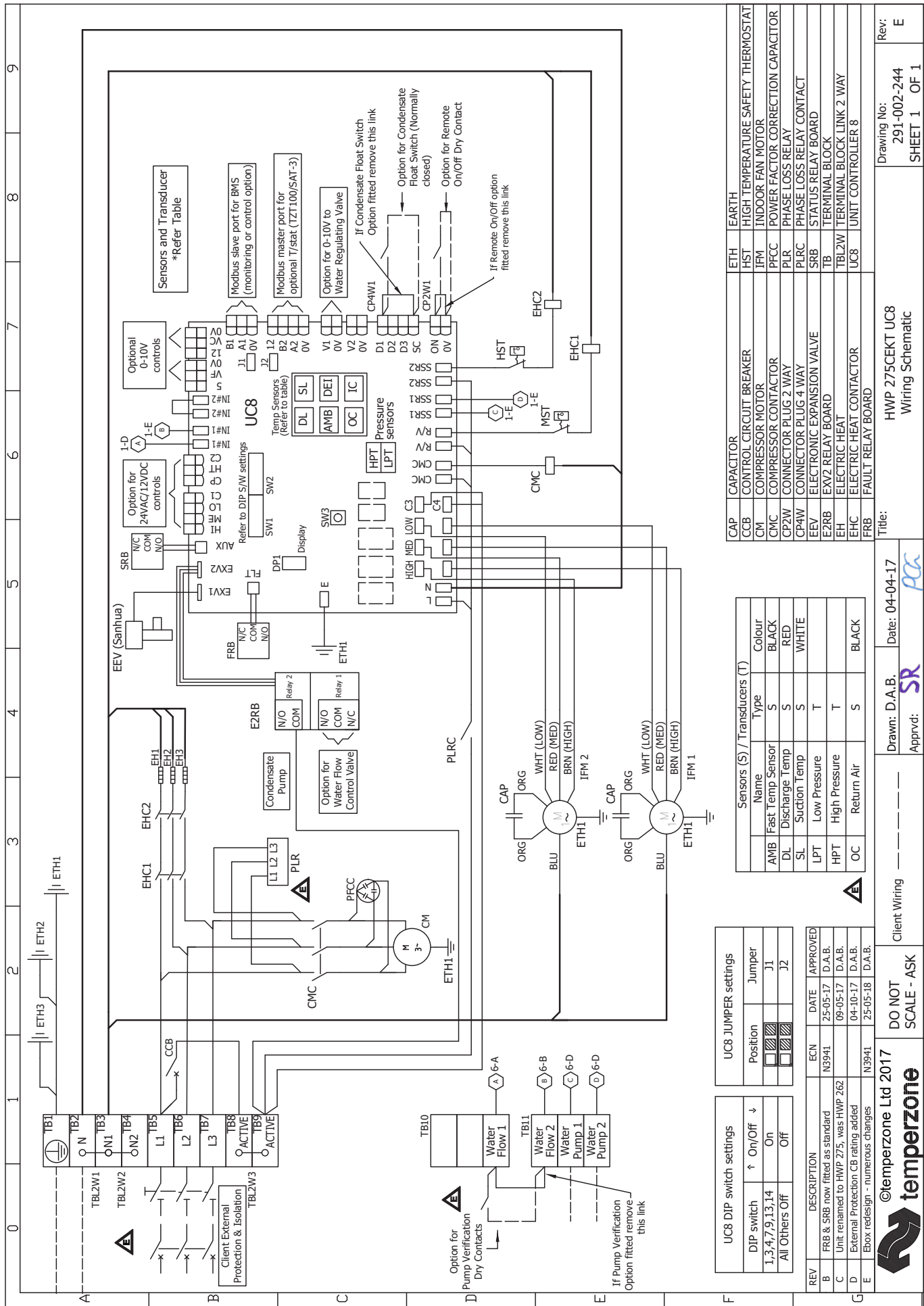
Sensors (S) / Transducers (T)	Name	Type	Colour
DL	Discharge Temp	S	RED
SL	Suction Temp	S	WHITE
LPT	Low Pressure	T	
HPT	High Pressure	T	
OC	Return Air	S	BLACK

UC8 DIP switch settings	Position	Jumper
DIP switch 1,7,9,13,14	On	J1
All Others	Off	J2

REV	DESCRIPTION	ECN	DATE	APPROVED
A	Initial Release			
B	FRB & SRB now fitted as standard	N3941	25-05-17	D.A.B.
C	Unit renamed to HWP 275, was HWP 262		09-08-17	D.A.B.
D	Ebox redesign - numerous changes	N3941	25-05-18	D.A.B.

©temperzone Ltd 2017

 Drawing No: HWP 275CKT UC8
 SHEET 1 OF 1
 Rev: D
 Title: Wiring Schematic
 Date: 04-04-17
 Drawn: D.A.B.
 Approved: SR
 Client Wiring: DO NOT SCALE - ASK



Component	UC8 Terminal	UC8 Terminal
CAP	EARTH	HIGH TEMPERATURE SAFETY THERMOSTAT
CCB	HST	INDOOR FAN MOTOR
CM	IFM	POWER FACTOR CORRECTION CAPACITOR
CMC	PLRC	PHASE LOSS RELAY
CP2W	PLRC	PHASE LOSS RELAY
CP4W	PLRC	PHASE LOSS RELAY
EEV	SRB	STATUS RELAY BOARD
E2RB	SRB	STATUS RELAY BOARD
EH	TB	TERMINAL BLOCK
EHC	TBL2W	TERMINAL BLOCK LINK 2 WAY
FRB	UC8	UNIT CONTROLLER 8

Sensors (S) / Transducers (T)	Name	Type	Colour
AMB	Fast Temp Sensor	S	BLACK
DL	Discharge Temp	S	RED
SL	Suction Temp	S	WHITE
LPT	Low Pressure	T	
HPT	High Pressure	T	
OC	Return Air	S	BLACK

UC8 DIP switch settings	
DIP switch	On/Off
1,3,4,7,9,13,14	On
All Others	Off

REV	DESCRIPTION	ECN	DATE	APPROVED
B	FRB & SRB now fitted as standard	N3941	25-05-17	D.A.B.
C	Unit renamed to HWP 275, was HWP 262		09-05-17	D.A.B.
D	External Protection CB rating added		04-10-17	D.A.B.
E	Ebox redesign - numerous changes	N3941	25-05-18	D.A.B.

Drawing No: 291-002-244
 SHEET 1 OF 1
 Title: HWP 275CEKT UC8 Wiring Schematic
 Drawn: D.A.B. Date: 04-04-17
 Approved: SR
 Client Wiring: DO NOT SCALE - ASK
 ©temperzone Ltd 2017
temperzone