

SPECIFICATIONS



Model	OPA 550RKTBG-PZ ECO
Configuration	Horizontal Supply Air c/w Economiser
Item No. (Standard / Opposite Hand)	867-055-701 / 867-055-710
Cooling capacity (net) to AS/NZS 3823 T1	52.9 kW
Heating capacity H1	53.4 kW
Electrical input - cooling	18.1 kW
Electrical input - heating	15.5 kW
EER / AEER (cooling)	2.93 / 2.92
COP / ACOP (heating)	3.35 / 3.34
Unit Controller	UC8 (x2)
Refrigerant	R410A
Refrigerant Charge	9.5 kg/sys.
Compressor oil type	POE 32-3MAF (or equivalent)
Compressor type	digital + fixed scroll
Power supply	3 ph. 400V ac 50Hz
Compressor (3ph.) run amps at rating cond.	14 A/ph. (x2)
Compressor overload setting	17 / 17 A
Compressor circuit breaker	32 A (x2)
Indoor fan motor size	EC plug 560 dia. 3.5kW
Nominal air flow at rating conditions	2800 l/s
Indoor fan motor (3ph.) - full load	6 A/ph.
Outdoor fan motor (1ph.) - full load	4.5 A (x2)
Outdoor fan capacitor size	n/a
Control circuit breaker (internal)	2 A
Single phase socket circuit breaker	10 A
Running amps (total system)	29 / 38 / 29 A
Max. running amps (total system)	36 / 46 / 37 A
Net weight	938 kg

Accessories:

Filters - rated EU4/G4 disposable	019-400-010 450x600x50 (x2) 019-400-007 600x600x50 (x2)
-----------------------------------	--

Optional Controls:

Viking controller	201-000-191
-------------------	-------------

Refer to temperzone for other options.

Tested in accordance with AS/NZS 3823

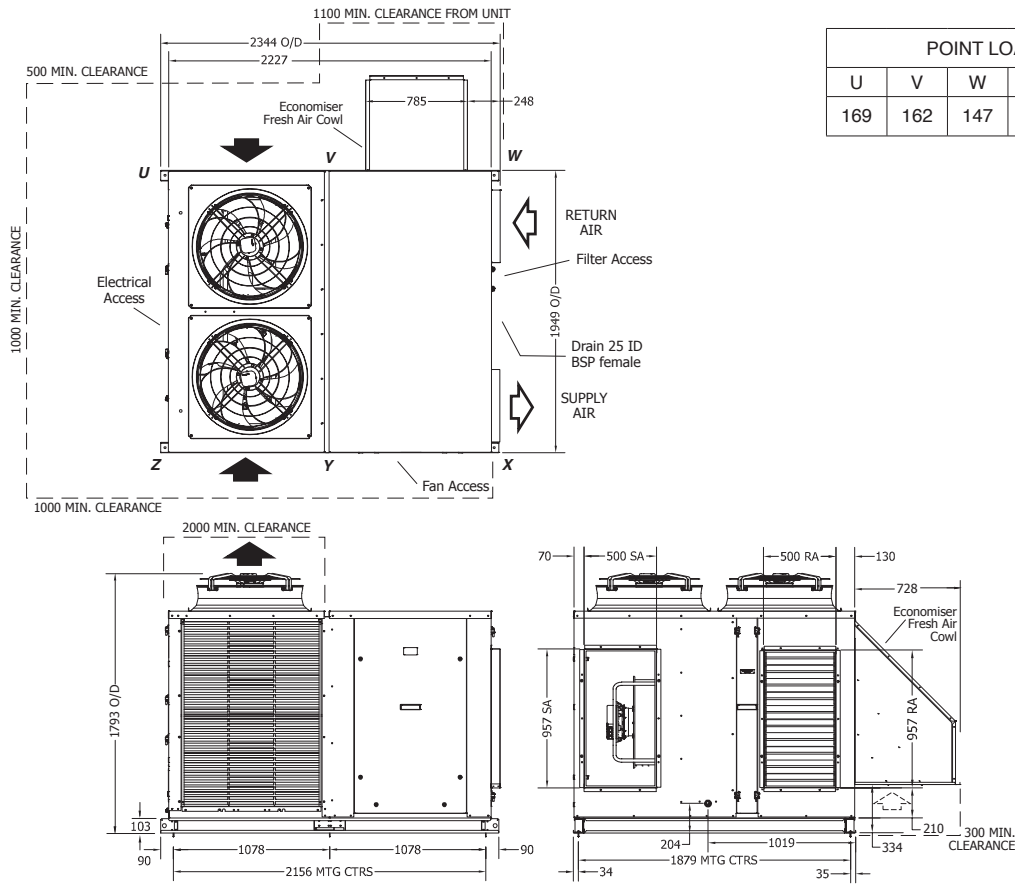
16120

DIMENSIONS (mm)

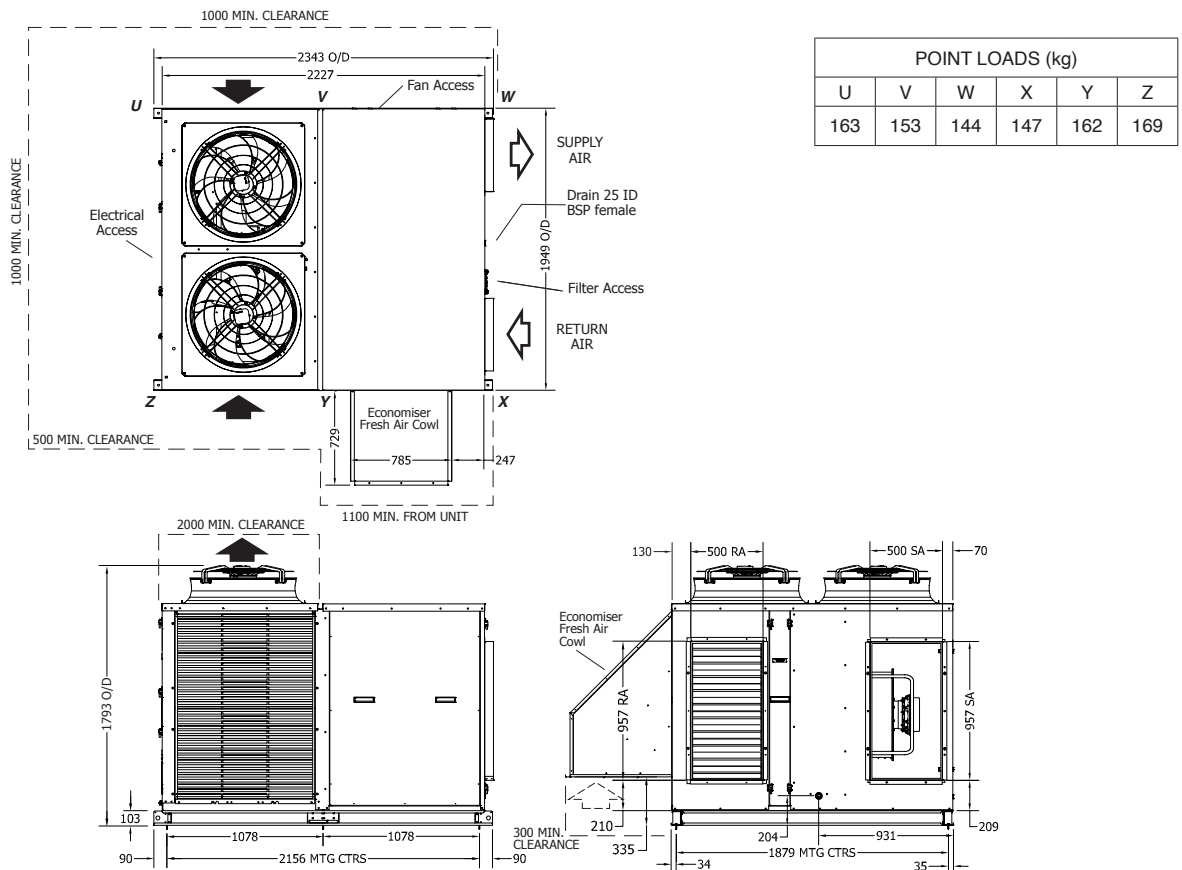


Not to Scale

OPA 550RKTBG01-PZ Standard Hand



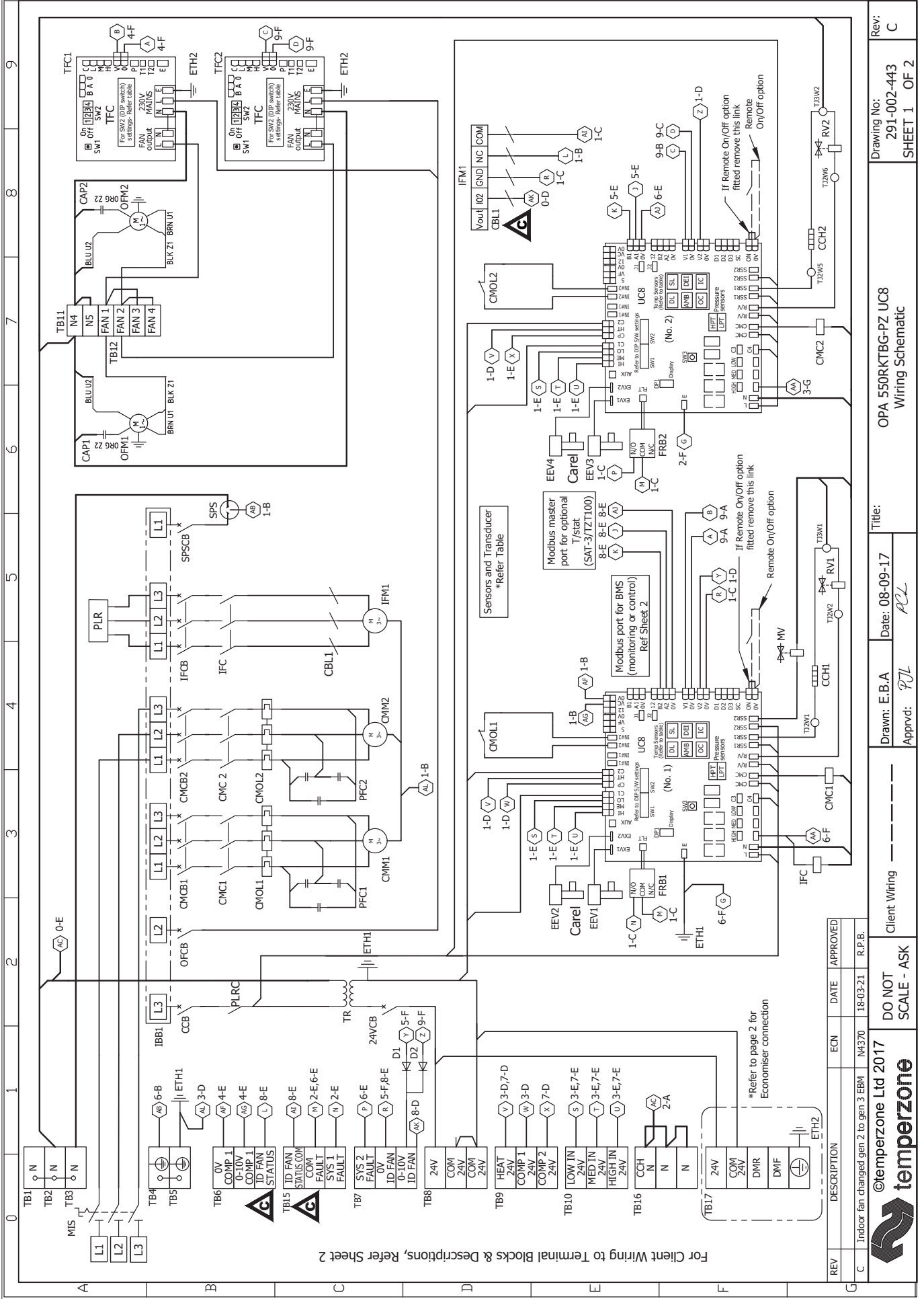
OPA 550RKTBG10-PZ Opposite Hand



NOTE

Specifications are subject to change without notice due to the manufacturer's ongoing research and development programme.





REV	DESCRIPTION	ECN	DATE	APPROVED
C	Indoor fan changed gen 2 to gen 3 EBM N4370	N4370	18-03-21	R.P.B.

©temperzone Ltd 2017
 DO NOT SCALE - ASK



Client Wiring

Drawn: E.B.A
 Apprvd: P.J.L

Date: 08-09-17
 A.C.L

Title: OPA 550RKTBG-PZ UC8
 Wiring Schematic

Drawing No: 291-002-443
 SHEET 1 OF 2
 Rev: C

0123456789

ABCDEFG

Important Notes:

1) Crankcase Heater Note
24 Hour power required for control circuit and crankcase heaters

2) SAT-3 & TZT 100 Note
To connect TZT100 to unit use 2 pair twisted cable - screen grounded. (F/UTP 24G (0.2mm²) or thicker recommended)

3) Master-slave note
When the unit is controlled with a TZT-100 or SAT-3 wall thermostat then the two UC8 controllers must be linked and configured as master and slave.
Master-DIP switch settings: 11 OFF 12 OFF
Slave DIP switch settings: 11 ON 12 OFF

Sensors (S) / Transducers (T)		Colour
Name	Type	
DL	Discharge Temp	RED
SL	Suction Temp	WHITE
AMB	Ambient Temp	BLACK
DEI	De-ice Temp	BLUE
LPT	Suction Pressure	
HPT	High Pressure	

SAT-3 & TZT100 connection to UC8 terminals	
UC8 terminals(No.1)	SAT-3
12	12V
B2	B
A2	A
0V	GND
Screen to 0V	

UC8 DIP switch settings (No.1)	
DIP switch	On/Off
1,2,4,6,7,10	On
All Others Off	Off

UC8 DIP switch settings (No.2)	
DIP switch	On/Off
1,4,6,7,10	On
All Others Off	Off

TFC DIP switch settings	
DIP switch	On/Off
1, 2, 3, 4	Off

Client Wiring

Remote option

If Remote On/Off option fitted remove this link

Remote On/Off option

BMS Control

Economiser Connection

Connection to control tstat by client

24VOLT CIRCUIT BREAKER

CAP
CBL
CCB
CCH
CMC
CMB
CMM
CMOL
DMF
DMR
EEV
ETH
FRB
IFC
IFCB
IFM
IBB
IBS
MIS
MV
OFCB
OFM
PFC
PLR
PLRC
RV
SPSCB
TB
TFC
TJ
TR
UC8
L1
L2
L3

24VOLT CIRCUIT BREAKER
CAPACITOR
CABLE
CONTROL CIRCUIT BREAKER
CRANKCASE HEATER
COMPRESSOR CONTACTOR
COMPRESSOR CIRCUIT BREAKER
COMPRESSOR MOTOR
COMPRESSOR OVERLOAD
DAMPER MOTOR FRESH-AIR
DAMPER MOTOR RETURN-AIR
ELECTRONIC EXPANSION VALVE
EARTH
FAULT RELAY BOARD
INDOOR FAN CONTACTOR
INDOOR FAN CIRCUIT BREAKER
INDOOR FAN MOTOR
INSULATED BUS BAR
MAIN ISOLATOR SWITCH
MODULATING VALVE
OUTDOOR FAN CIRCUIT BREAKER
OUTDOOR FAN MOTOR
POWER FACTOR CORRECTION
PHASE LOSS RELAY
PHASE LOSS RELAY CONTACT
REVERSING VALVE
SINGLE PHASE SOCKET
SINGLE PHASE SOCKET CIRCUIT BREAKER
TERMINAL BLOCK
TRIAC FAN CONTROLLER
TERMINAL JOINER
TRANSFORMER
UNIT CONTROLLER 8
L1 LINE SUPPLY
L2 LINE SUPPLY
L3 LINE SUPPLY

REV	DESCRIPTION	ECN	DATE	APPROVED
C	Indoor fan changed from gen 2 to gen 3 EBM	N4370	18-03-21	R.P.B.

Client Wiring

DO NOT SCALE - ASK

ECN	DATE	APPROVED
N4370	18-03-21	R.P.B.

©temperzone Ltd 2017

Client Wiring

DO NOT SCALE - ASK

Drawn: E.B.A

Apprvd: P.J.L

Date: 08-09-17

APL

OPA 550RKTBG-PZ UC8

Wiring Schematic

Drawing No: 291-002-443

SHEET 2 OF 2

Rev: C

Rev: C