

HITACHI

4-way Ceiling Cassette

Cooling & Heating



WARRANTY



GOOD
DESIGN
AWARD
2020



reddot winner 2021
best of the best

Creating truly comfortable living spaces.

We want to help you find the air conditioner that best suits your lifestyle. Our partnership with **temperzone** combines innovative global products with local knowledge and support to meet your needs faster, smarter and more responsibly than ever before.



WIDE AMBIENT OPERATING RANGE

RCI / RAS: -20°C – 46°C
RAI / RAS: -15°C – 46°C



6 YEAR
WARRANTY



4 WAY AIR
FLOW



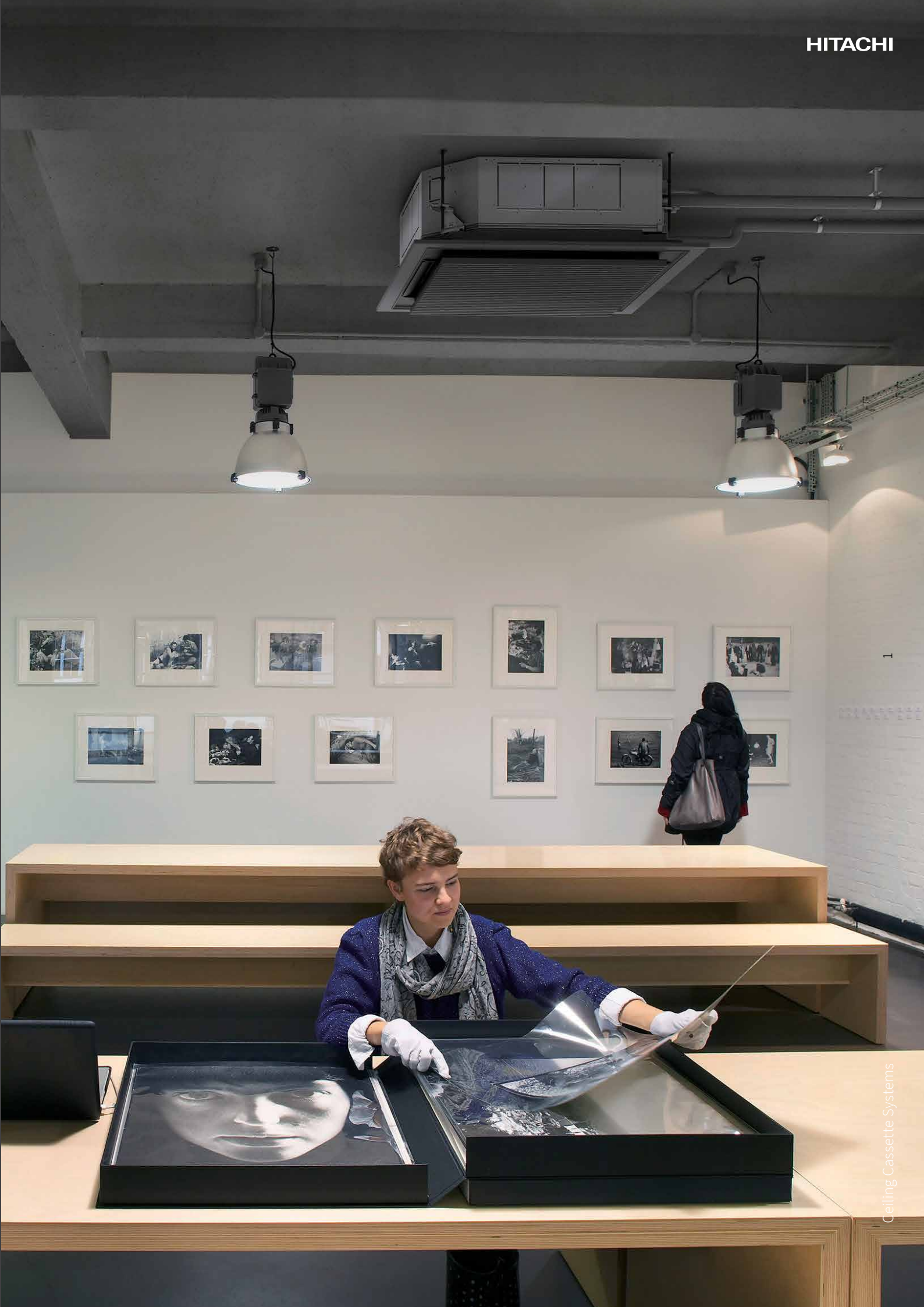
FRESH AIR
INLET*



WIFI APP**

*RCI Only

**Only applicable to RAI-E50 & E60 compact cassettes.





KONSEPT

Delivering big results for small spaces

When commercial spaces are limited, there's only one climate control solution that offers you the power to customise usage.

Incorporating DC technology, our cassette range features inverter control and the ability to achieve superior operating efficiency.

Ranging in Cooling capacity from 5kW to 13kW the range delivers the level of comfort, convenience, and reliability that you've come to expect from Hitachi.

4-way airflow cassettes are an economical and effective way of air conditioning open areas with high occupancy or traffic, such as shops, walkways, and restaurants.



**FLEXIBLE
DESIGN**



**EASY
MAINTENANCE**



AUTO RESTART



**4-WAY
CASSETTE**



**INDIVIDUAL
LOUVER CONTROL**

RCI models capable of individual louver control



CONTROL

Stylish local controllers.
Auto restart function.
Connection to VRF central controllers.



**WARRANTY
COMMERCIAL AND
RESIDENTIAL**

The flexibility of a Hitachi cassette

Hitachi's diverse range of cassettes allows selection of the right unit for any application.

COMPACT 4-WAY CASSETTE (RAI) R32

5.0kW - 6.0kW

With a height of only 285mm, these cassettes are some of the smallest on the market and can be embedded within one ceiling tile.

570mm x 570mm cassette.

Standard wall controller:
SPX-WKT3 controller

R32
REFRIGERANT



4-WAY CASSETTE (RCI-FSN3) R410

7.1kW - 13.0kW

Overall dimension of 840X840mm and height of 298mm.

Standard wall controller:
PC-ARFG controller

R410A
REFRIGERANT



4-WAY CASSETTE (RCI-FSRP) R410

7.1kW - 13.0kW

Overall dimension of 840X840mm and height of 298mm.

Standard wall controller:
PC-ARFG controller

R410A
REFRIGERANT





White Fascia



Black Fascia



Elevating Grille Option

Silent Iconic

A design panel in harmony with the space that responds to the needs of architectural designers



iF Design Award 2020
Award Winning
(Discipline: Product)

About the iF Design Award

The iF Design Award has been known as one of the most prestigious international design awards for 67 years, and the iF logo is widely recognized as a symbol of excellent design. The awards are divided into seven categories such as product, packaging, communication, service design, architecture, interior, and professional concepts.



reddot winner 2021
best of the best



GOOD
DESIGN
AWARD
2020



Try our virtual installation

Scan the QR code with your mobile camera to see how the Silent-Iconic looks in your space.

Operating system: iOS 12.1 or later.





red dot winner 2021
best of the best

Stylish Wall Controller

AWARD WINNING DESIGN

Its sleek and modern design, hasn't gone unnoticed. It has received three awards: a Red Dot Award, an iF Design Award and it also received a 2020 European Product Design Award in the Temperature Control Systems category.

The curved front panel creates an extra touch of elegance and is convenient for users when accessing the buttons.

A NEW GENERATION OF CONTROLLER

The Advanced Colour wired controller has a 4.3" screen and uses a palette of modern colours and user-friendly pictograms to offer a fresh-looking interface.

All the latest features of Hitachi air conditioners are available with this controller.

From 0.5°C precision set temperature to advanced GentleCool anti-cold draft settings, everyone can create a pleasant atmosphere in one touch.

STYLISH REMOTE CONTROLLERS

A fully-programmable 7-day timer offers the ability to switch all units on and off automatically to conserve power when rooms are unoccupied.

The main body of the remote control switch is gently curved and the touch buttons are placed in a position that is easy to operate. You can adopt a different display color for each operation mode.

WALL CONTROLLERS



PC-ARFG

Applicable to indoor models RCI-3.0, 4.0, 5.0 & 6.0

- Colour Display
- 24/7 time schedule
- Eco mode
- Room temperature indication
- Sleep timer
- Power consumption display
- Backlight display



SPX-WKT3

Applicable to indoor models RAI-E50 & E60

- 24/7 time schedule
- Eco mode
- Room temperature indication
- Sleep timer
- Power consumption display
- Backlight display

airCloud Home

Optional Accessory, compatible with RAI-E50 & E60 compact cassettes.



Download today



www.aircloudhome.com

A smarter way to control your air conditioner. Anytime, anywhere.

CONTROL FROM ANYWHERE

Making sure your home is at the perfect temperature for when you arrive has never been easier. Hitachi airCloud Home allows you to remotely monitor and control your system from a single app through your smartphone.

CONTROL WITH YOUR VOICE

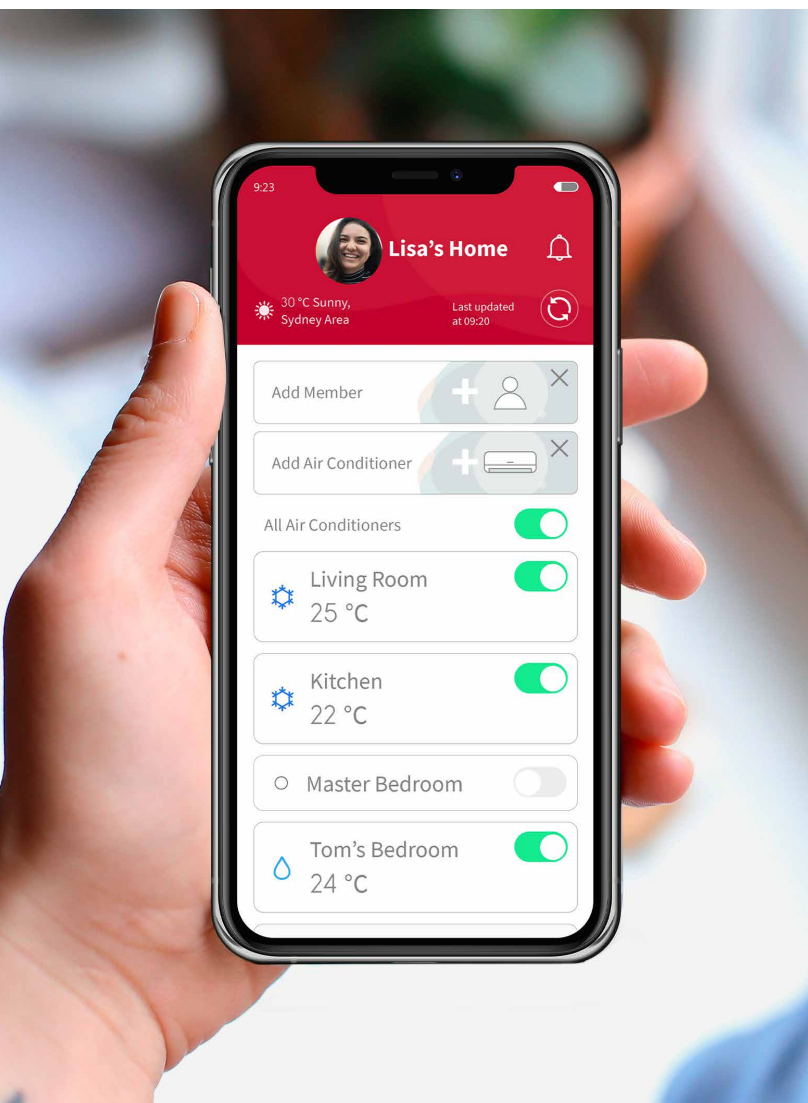
airCloud Home is fully compatible with Amazon Alexa and Google Assistant, enabling you to control your air conditioner hands-free.

SMART FENCE

Connect your air conditioner to your location and automatically stop and start your AC as you leave and return home.

AIRCLOUD FEATURES

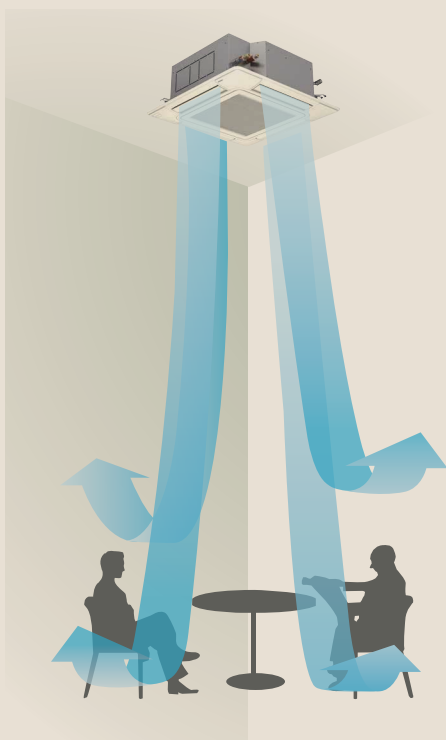
- On / Off Operation
- ALL Units OFF
- Operation Mode Selectable
- Temperature Adjustment
- Smart Speaker (Google Assistant & Amazon Alexa)
- Smart Fence
- Weekly Scheduling
- On / Off Timer
- Adjustable Louvre
- Fan Speed
- Free firmware updates to latest features
- Unlimited units can be controlled through one app
- Account Management
 - Access for up to 20 users
 - Set up user permissions
- Customer Support
- Personalisation - Indoor unit naming
- Smart Notifications



Ceiling Cassette Systems

Compatible with Android devices version 4.3 and above and IOS 8.0 and above.

Powerful and Flexible



High air flow, up to 5.0m on larger RCI models.

NEW ANTIBACTERIAL AGENT*

An internal low-voltage drain pump removes accumulated condensate from the drain pan, even during unit operation. A float switch monitors the water level and automatically activates the pump as necessary. A silver ion antibacterial agent inhibits slime build-up, while a larger drain diameter assists in more efficient drainage.

*Only applicable to RCI models.

SILKY FLOW LOUVER

The new structured silky flow louver is designed to reduce the discomfort caused by temperature irregularity and cold drafts. Individual control setting for each louver is available.

ONE-TOUCH PANEL

The unit has an easy one-touch panel so that the filter can be removed for cleaning.



MOTION SENSOR*

Designed to detect the amount of human activity within a particular space, the motion sensor is an integral component of the optional energy-saving technology. It maintains a comfortable indoor environment by automatically adjusting the airflow volume, direction and temperature according to the amount of activity. Savings can be further improved with individual operating function. In addition, operation can also be ceased automatically if a space remains unoccupied for more than 30-minutes.

*Optional panel. Only applicable to RCI models.

Antibacterial
low voltage
drain pump



Silky flow louver



*RCI models are 75mm.



Demand Control Technology

Already highly efficient, Hitachi Premium Inverter models offer two additional ways to configure systems to achieve even greater energy savings.

SELF-DEMAND CONTROL*

Power consumption levels (as a percentage of the maximum) can be selected in advance. Following an external command during operation, the system will automatically detect the amount of power being used and limit itself to the predetermined amount during peak power usage periods.

* RCI / RAS models.

WAVE MODE

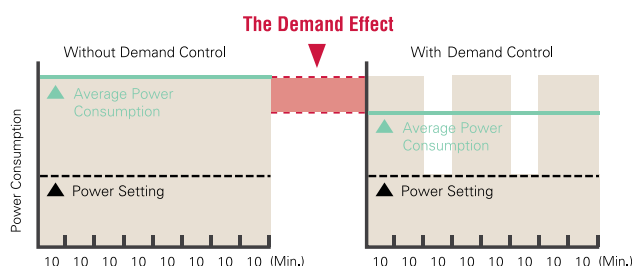
When activated by an external command, this function cycles the system between full-power and a pre-selected reduced power setting every 10 to 20-minutes until the command is cancelled. Wave Mode results in lower average power usage and cost savings.

FRESH AIR*

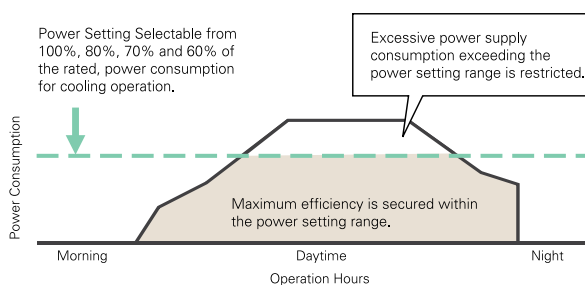
Our range is designed to accept external air and mix it with conditioned air to ensure that there's always a percentage of fresh air supplied to a conditioned space.

*Only applicable to RCI models.

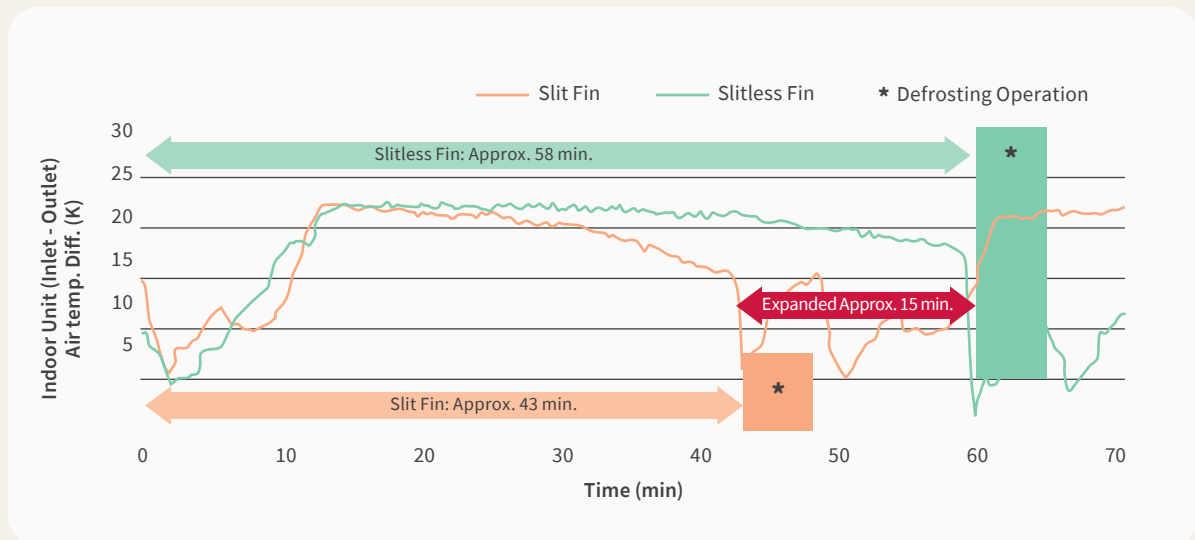
Wave Mode



Self-Demand Control (DRED)



Slitless Fin Heating Performance



Only applicable to RAS 3.0 - 6.0 models.

DC INVERTER TECHNOLOGY

A DC compressor offers improved performance during periods of extended operation. It also features a split rotor with displaced electrical poles, enabling the suppression of electromagnetic noise. Low-speed performance characteristics have also been improved, leading to significant reductions in annual running costs.

INSTALLATION AND FLEXIBILITY

Changing the way that everybody thinks about twin, triple and quad split configurations, the IVX is the perfect choice for installations requiring individual unit control. Facilitation and installation flexibility are further achieved due to the outdoor unit's lightweight, compact design.

PRECISE INVERTER CONTROL

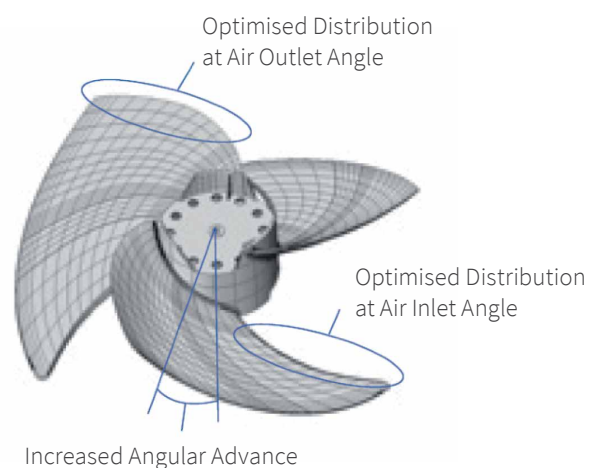
The operating speed of the compressor's DC motor can be adjusted continuously in 1Hz increments and in free relation to the variability of system capacity.

QUIET OPERATION - SUPER HIGH-STREAM FAN

Advancements in the blade design and optimisation of the inlet and outlet angles have led to a 9% increase in efficiency while still maintaining low operating noise levels.

SLITLESS FIN HEATING PERFORMANCE

The revolutionary heat exchange design featuring slitless fin surface improves water removal, thereby leading to reduced frosting and improved heating performance under low heating temperature conditions.

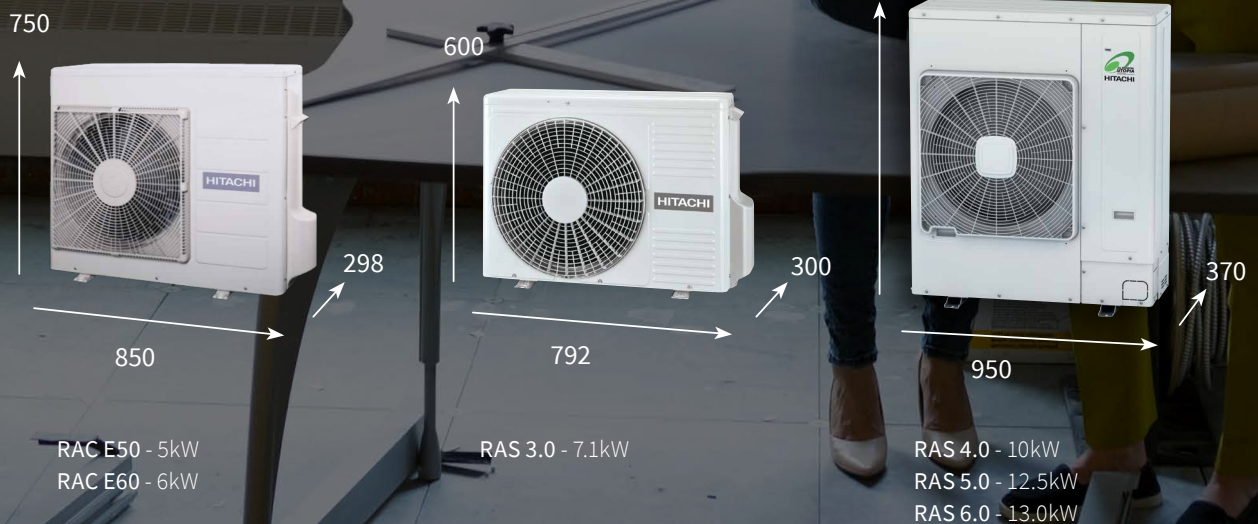


Advancements in technology

COMPACT AND LIGHT

Effective design and downsizing has led to a reduction in the footprint compared with previous models. This has made installation easier and improved maintenance access.

OUTDOOR UNITS



H-Link



H-Link II is a unique Hitachi communication system that can control multiple outdoor and indoor units from one location.

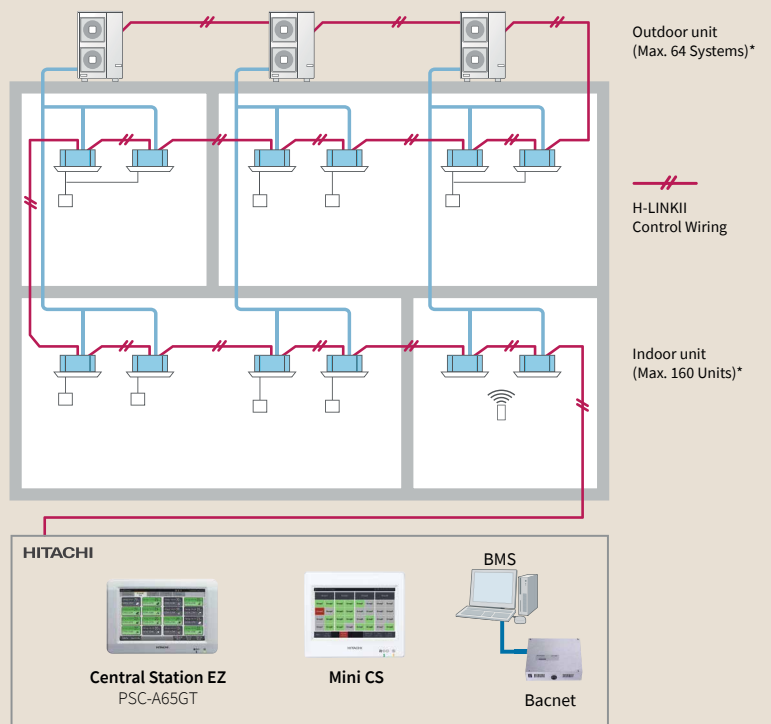
It simplifies commissioning and service maintenance for installers and service engineers, and enables owners and occupiers to enjoy better system management through the ability to connect various types of central control options.

Hitachi VRF, split systems, chillers and even wall mounts (via an interface card) can be connected to H-Link II.

INTELLIGENT CONTROLS

Hitachi offers a range of LCD wall-mounted and handheld controllers suited to both commercial and residential applications.

Applicable to RCI models only.



* This example shows multiple indoor / outdoor units and local controller types connected on the same H-Link system, with a choice of central controller.

Features and options comparison table

	COMPACT 4-WAY CASSETTE (RAI) R32	4-WAY CASSETTE (RCI) R410
Nominal Cooling Capacities	5.0, 6.0kW	7.1, 10, 12.5, 13kW
Silky flow louver	●	●
One touch panel	●	●
Efficient drain pump	●	●
Motion sensor / Human sensor	-	■
Fresh Air	-	■
H-Link II system	■	●
PC-ARFG wired controller	-	■
SPX-WKT3 wired controller	●	-
SPX-RCDB wired controller (simplified)	■	-
SPX-RCKA3 controller (infra red)	■	-
Remote Stop / Start Accessory	■	■
airCloud Home Wifi control	■	-

- STANDARD
- OPTIONAL
- NOT AVAILABLE

4 Way Cassette (One-to-One) Comparison Chart

Model - Indoor / Outdoor Unit	RAI-E50 / RAC-E50YHA	RAI-E60 / RAC-E60YHA
General Specifications		
Capacity (kW)		
Cooling Capacity	5.0	6.0
Cooling Capacity Range	1.2 - 5.8	1.2 - 6.5
Heating Capacity	6.0	7.0
Heating Capacity Range	1.2 - 6.8	1.2 - 8.0
Energy Efficiency		
EER / AEER	3.5 / 3.48	3.43 / 3.41
COP / ACOP	3.87 / 3.85	3.61 / 3.60
Air Flow (l/sec)		
UHi / Hi / Med / Low	216 / 191 / 166 / 125	216 / 191 / 166 / 125
Dimensions		
Indoor Unit: (H x W x D mm) (Height excludes fascia panel)	285 x 570 x 570	285 x 570 x 570
Outdoor: (H x W x D mm)	750 x 850 x 298	750 x 850 x 298
Weights: Indoor kg / Outdoor kg	17 / 50	17 / 50
Sound Pressure Level (dB(A))		
Indoor Unit (UHi / Hi / Med / Low)	43 / 39 / 35 / 29	43 / 39 / 35 / 29
Outdoor Unit (Cool / Heat / Night)	50 / 53 / -	50 / 53 / -
Sound Power	63	63
Working Range (°C db)		
Cooling	-10° / 46°C	
Heating	-15° / 24°C	
Fascia Panel Model	STANDRD PANEL P - AP56NAM	
Wired Controller (Standard)	SPX - WKT3	
Infrared Controller / Receiver (Optional)	SPX - RCKA3	
3 Way Outlet kit (Optional)	N / A	
Fresh Air Inlet (Optional)	N / A	
Remote Input / Output Plug (Optional)	SPX - WDC2/ SPX - WDC8	
HI Link Apaptor	PSC - 6RAD	
Piping		
Pipe Connection Sizes: Liquid Ømm / Gas Ømm	6.35 / 12.70	
Max Pipe Length (m)	30	
Max Pre Charged Length (m)	30	
Max Pipe Lift (m)	20	
Refrigeration Connections (Indoor / Outdoor)	Flare Nut / Flare Nut	
Electrical		
Power Supply	AC 1 Ph 220 - 240V 50Hz	
Outdoor Unit Max Current (Amps)	10.5	

NOTES:

The nominal cooling and heating capacity is the combined capacity of the Hitachi standard split system, and is based on the JIS standard B8616. Cooling Operation Conditions: Indoor Air Inlet Temperature: 27°C DB, 19.0°C WB; Outdoor Air Inlet Temperature: 35°C DB. Heating

Operation Conditions: Indoor Air Inlet Temperature: 20°C DB; Outdoor Air Inlet Temperature: 7°C DB, 6°C WB. Published capacities based on Piping Length: 7.5 metres. The sound pressure level is based on following conditions: 1.5 metres beneath the unit. Outdoor Units:



RCI-3.0FSN3 / RAS-3HVNC	RCI-4.0FSN3 / RAS-4HVNC1	RCI-5.0FSN3 / RAS-5HVNC1	RCI-6.0FSN3 / RAS-6HVNC1
-------------------------	--------------------------	--------------------------	--------------------------

7.1 3.2 - 8.0 8.0 3.5 - 10.6	10.0 4.5 - 11.2 11.2 5.0 - 14.0	12.5 5.7 - 14.0 14.0 5.0 - 18.0	13.0 6.0 - 16.0 16.0 5.0 - 20.0
3.48 / 3.33 3.70 / 3.52	3.72 / 3.55 4.51 / 4.25	3.29 / 3.12 3.84 / 3.63	3.15 / 3.00 3.61 / 3.44
450 / 383 / 300 / 233	617 / 517 / 400 / 333	617 / 550 / 443 / 350	617 / 583 / 467 / 367
298 x 840 x 840 600 x 792 x 300 26 / 44	298 x 840 x 840 1140 x 950 x 370 26 / 79	298 x 840 x 840 1140 x 950 x 370 26 / 89	298 x 840 x 840 1140 x 950 x 370 26 / 89
42 / 36 / 32 / 28 48 / 50 / 46	48 / 43 / 39 / 33 52 / 54 / 50	48 / 45 / 40 / 35 52 / 54 / 50	48 / 46 / 41 / 37 55 / 57 / 53

- -5° / 46°C
- -20° / 15°C
- P-AP160NA1 (Std - Exc Motion Sensor) / P-AP160NAE (Optional - Inc Motion Sensor)
- PC-ARFG
- PC- AWR / PC- ALH3
- PI-160LS1
- PD-75A & OACI-160K2
- PCC-1A

9.52 / 15.88 50 20	9.52 / 15.88 70 30	9.52 / 15.88 75 30	9.52 / 15.88 75 30
..... 30m if outdoor higher / 20m if outdoor lower			
..... Flare Nut / Flare Nut			

..... AC 1 Ph 220 - 240V 50Hz			
16	26.3	26.4	26.4

1 metre from the unit service cover surface, and 1.5 metres from floor level. Voltage of the power source for the indoor fan motor is 220V. The above data was measured in an anechoic chamber so that reflected sound should be taken into consideration in the field.

4 Way Cassette (One-to-One) Comparison Chart

Model - Indoor / Outdoor Unit	RCI-3.0FSRP / RAS-3HVNC	RCI-4.0FSRP / RAS-4HVNC1
General Specifications		
Capacity (kW)		
Cooling Capacity	7.1	10.0
Cooling Capacity Range	3.2 - 8.0	4.5 - 11.2
Heating Capacity	8.0	11.2
Heating Capacity Range	3.5 - 10.6	5.0 - 14.0
Energy Efficiency		
EER / AEER	3.48 / 3.33	3.72 / 3.55
COP / ACOP	3.70 / 3.52	4.51 / 4.25
Air Flow (l/s)		
UHi / Hi / Med / Low	450 / 383 / 300 / 250	600 / 517 / 400 / 333
Dimensions		
Indoor Unit: (H x W x D mm) (Height excludes fascia panel)	298 x 840 x 840	298 x 840 x 840
Outdoor: (H x W x D mm)	600 x 792 x 300	1140 x 950 x 370
Weights: Indoor kg / Outdoor kg	26 / 44	26 / 79
Sound Pressure Level (dB(A))		
Indoor Unit (UHi / Hi / Med / Low)	41 / 36 / 32 / 30	49 / 44 / 39 / 33
Outdoor Unit (Cool / Heat / Night)	48 / 50 / 46	52 / 54 / 50
Working Range (°C db)		
Cooling	-5° / 46°C	
Heating	-20° / 15°C	
Fascia Panel Model	P-GP160NAP (White), P-GP160NAPU (White - elevating Grille), P-GP160KAP (Black)	
Wired Controller (Standard)	PC-ARFG	
Infrared Controller / Receiver (Optional)	PC-AWR / PC-ALH3	
3 Way Outlet kit (Optional)	PI-160LS2	
Fresh Air Inlet (Optional)	PD-75A & OACI-160K3	
Remote Input / Output Plug (Optional)	PCC-1A	
Piping		
Pipe Connection Sizes: Liquid Ømm / Gas Ømm	9.52 / 15.88	9.52 / 15.88
Max Pipe Length (m)	50	70
Max Pre Charged Length (m)	20	30
Max Pipe Lift (m)	30m if outdoor higher / 20m if outdoor lower	
Refrigeration Connections (Indoor / Outdoor)	Flare Nut / Flare Nut	
Electrical		
Power Supply	AC 1 Ph 220 - 240V 50Hz	
Outdoor Unit Max Current (Amps)	16	26.3

NOTES:

The nominal cooling and heating capacity is the combined capacity of the Hitachi standard split system, and is based on the JIS standard B8616. Cooling Operation Conditions: Indoor Air Inlet Temperature: 27°C DB, 19.0°C WB; Outdoor Air Inlet Temperature: 35°C DB. Heating

Operation Conditions: Indoor Air Inlet Temperature: 20°C DB; Outdoor Air Inlet Temperature: 7°C DB, 6°C WB. Published capacities based on Piping Length: 7.5 metres. The sound pressure level is based on following conditions: 1.5 metres beneath the unit. Outdoor Units:



RCI-5.0FSRP / RAS-5HVNC1	RCI-6.0FSRP / RAS-6HVNC1
12.5	13.0
5.7 - 14.0	6.0 - 16.0
14.0	16.0
5.0 - 18.0	5.0 - 20.0
3.29 / 3.12	3.15 / 3.00
3.84 / 3.63	3.61 / 3.44
617 / 550 / 417 / 350	617 / 583 / 467 / 367
298 x 840 x 840	298 x 840 x 840
1140 x 950 x 370	1140 x 950 x 370
26 / 89	26 / 89
49 / 46 / 41 / 35	49 / 47 / 43 / 37
52 / 54 / 50	55 / 57 / 53
..... -5° / 46°C -5° / 46°C
..... -20° / 15°C -20° / 15°C
..... P-GP160NAP (White), P-GP160NAPU (White - elevating Grille), P-GP160KAP (Black) P-GP160NAP (White), P-GP160NAPU (White - elevating Grille), P-GP160KAP (Black)
..... PC-ARFG PC-ARFG
..... PC- AWR / PC- ALH3 PC- AWR / PC- ALH3
..... PI-160LS2 PI-160LS2
..... PD-75A & OACI-160K3 PD-75A & OACI-160K3
..... PCC-1A PCC-1A
9.52 / 15.88	9.52 / 15.88
75	75
30	30
..... 30m if outdoor higher / 20m if outdoor lower 30m if outdoor higher / 20m if outdoor lower
..... Flare Nut / Flare Nut Flare Nut / Flare Nut
..... AC 1 Ph 220 - 240V 50Hz AC 1 Ph 220 - 240V 50Hz
26.4	26.4

1 metre from the unit service cover surface, and 1.5 metres from floor level. Voltage of the power source for the indoor fan motor is 220V. The above data was measured in an anechoic chamber so that reflected sound should be taken into consideration in the field.

Temperzone Ltd

ENQUIRIES

nzsales@temperzone.com

NEW ZEALAND

Auckland: (09) 279 5250

Hamilton: (07) 839 2705

Wellington: (04) 569 3262

Christchurch: (03) 379 3216

AUSTRALIA

Sydney: (02) 8822 5700

Melbourne: (03) 8769 7600

Brisbane: (07) 3308 8333

Adelaide: (08) 8115 2111

DISTRIBUTORS

Newcastle: (02) 4962 1155

Perth: (08) 6399 5900

Launceston: (03) 6331 4209

6 YEAR WARRANTY ON PARTS AND LABOUR*



6 YEAR
WARRANTY

hitachiaircon.co.nz



The specifications of this catalogue may change without prior notice to allow Hitachi Cooling & Heating to incorporate the latest innovations for its customers. The information contained in this catalogue is merely informative. Hitachi Cooling & Heating declines any responsibility in the broadest sense, for damage, direct or indirect, arising from the use and / or interpretation of the recommendations in this catalogue.

* Refer to NZ Hitachi Warranty for fully conditions.