

Indoor Unit	(845-351-001)	ISD 351LYX
Outdoor Unit	(846-351-003)	OSA 351RLTFV (inverter)
Cooling capacity (net) *		33.8 kW
Cooling capacity range (gross)		15.0 ~ 43.0 kW
Heating capacity *		35.0 kW
Heating capacity range		12.5 ~ 40.7 kW
Electrical input - cooling		10.3 kW
Electrical input - heating		9.7 kW
EER / AEER (cooling) *		3.29 / 3.27
COP / ACOP (heating) *		3.59 / 3.57
Unit Controllers		UC8 / IUC
Refrigerant		R32
Refrigerant precharge for 10 m		9.05 kg
Minimum floor area (@2.4m below ceiling diffuser)		43.6 m ²
Additional charge req'd for over 10 m		115 g/m
Maximum line length		90 m
Max. charge / Min. floor area (below ceiling diffuser)		18.1 kg / 174 m ²
Additional oil req'd for over 40 m		20 ml/m
Separation limit: OSA above ISD		20 m
Separation limit: OSA below ISD		20 m
Suction line		28 mm OD
Liquid line		13 mm OD
Compressor oil type		PVE (FW68S or equivalent)
Compressor type		inverter scroll
Power supply via OSA (incl. voltage fluctuations)		3 ph. 400 V ac 50 Hz + N + E
Compressor (3ph.) run amps at rating cond. *		14.0 A
Indoor fan motor size		900W + 1250W
Rated indoor fan speed		8V
Indoor fan motor (1ph.) - full load (total)		13 A
Outdoor fan motor (1ph.) - full load		1.3 A (x2)
Outdoor fan capacitor size		6µfd (x2)
Control circuit breaker (internal)		16 A
Running amps (total system) *		23 / 14 / 14 A
Max. running amps (total system)		39 / 24 / 24 A
RCD type recommended		type B, 30mA, 3 pole
Net weight ISD		124 kg
Net weight OSA		254 kg

Accessories:

ISD Spring mounting kit	307-341-101
ISD Filter box c/w EU4/G4 filter (NZ only)	493-000-016
ISD Replacement filter (NZ only)	019-400-003 (x3)
ISD Supply air plenum Ø400 x 4 (NZ only)	492-000-030
ISD Return air plenum Ø400 x 4 (NZ only)	492-100-008
ISD Fresh air inlet spigot Ø200 (NZ only)	325-000-052
OSA Drain connection adaptor 25/13mm	060-000-039
OSA Anti-vibration mounts - rubber (x4)	060-000-170

Optional Controls:

SAT-3 Room temperature controller	201-000-146
Six Zone Control kit for SAT-3	201-000-073
TZT-100 Room temperature controller	201-000-350

Refer to temperzone for other options, eg remote sensors, connection wires.

* Tested in accordance with AS/NZS 3823

19077

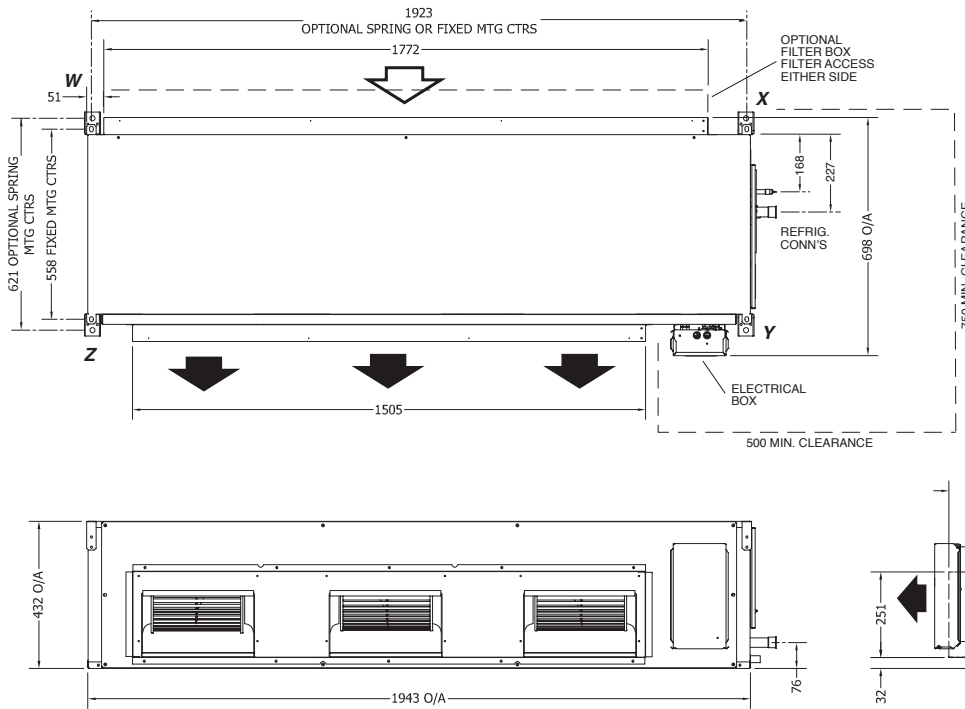
** Voltage range: 380-440V.

DIMENSIONS (mm)



Not to Scale

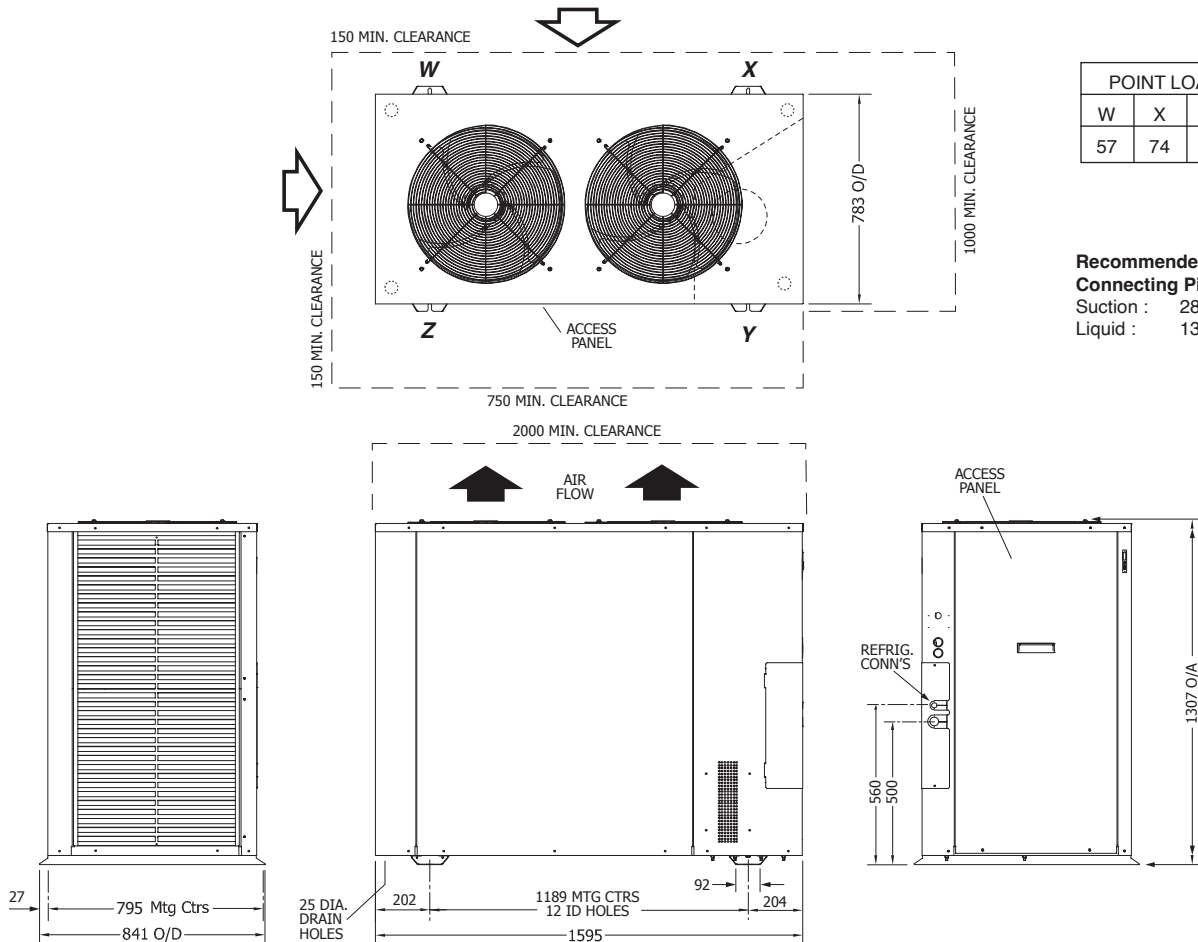
ISD 351LYX Indoor Unit



POINT LOADS (kg)			
W	X	Y	Z
27	28	34	35

Note: Fan motor can be accessed from panel above, below or front; no more than two panels at once.

OSA 351RLTFV Outdoor Unit

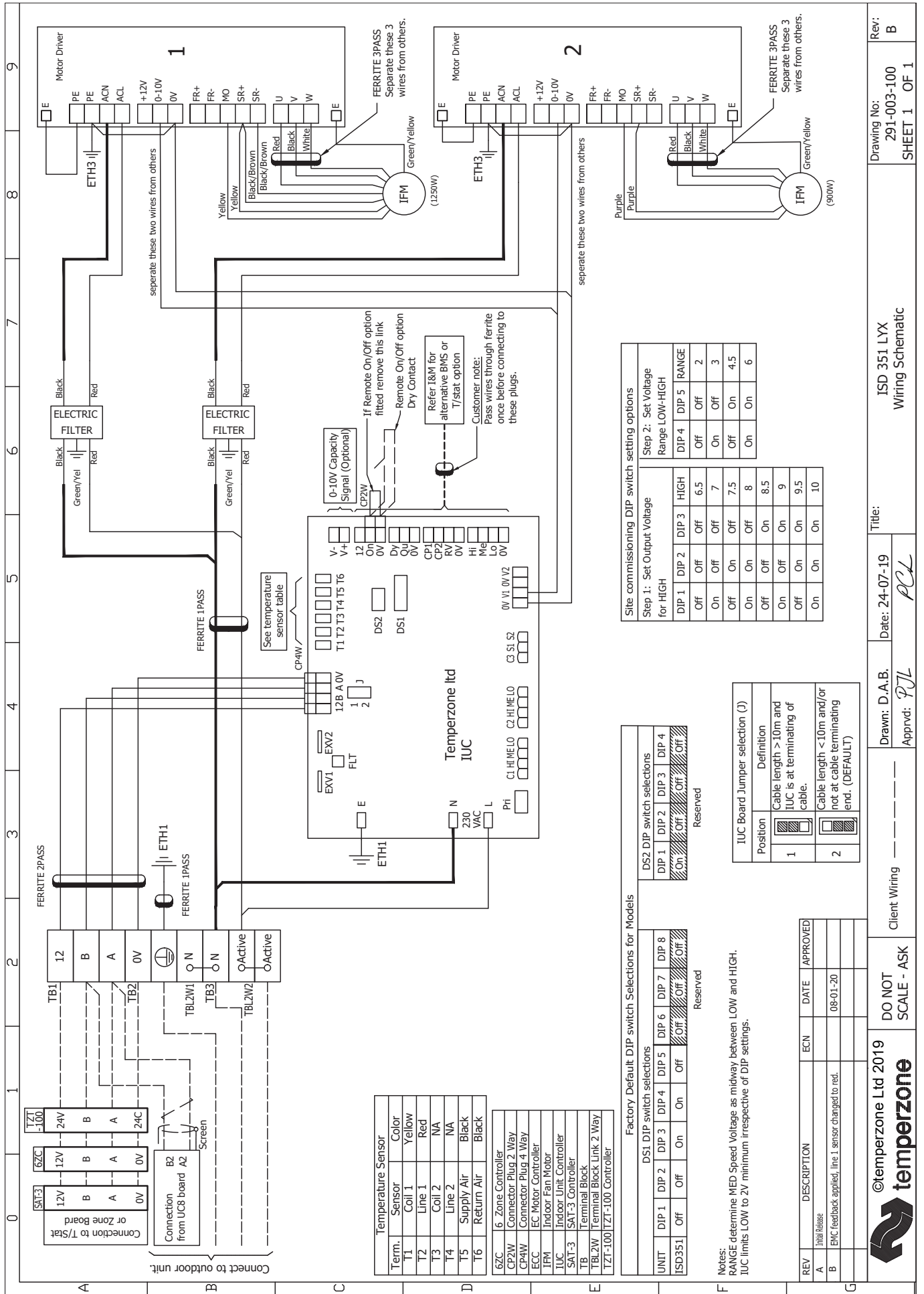


POINT LOADS (kg)			
W	X	Y	Z
57	74	89	34

Recommended Connecting Pipe Sizes
 Suction : 28 mm OD
 Liquid : 13 mm OD

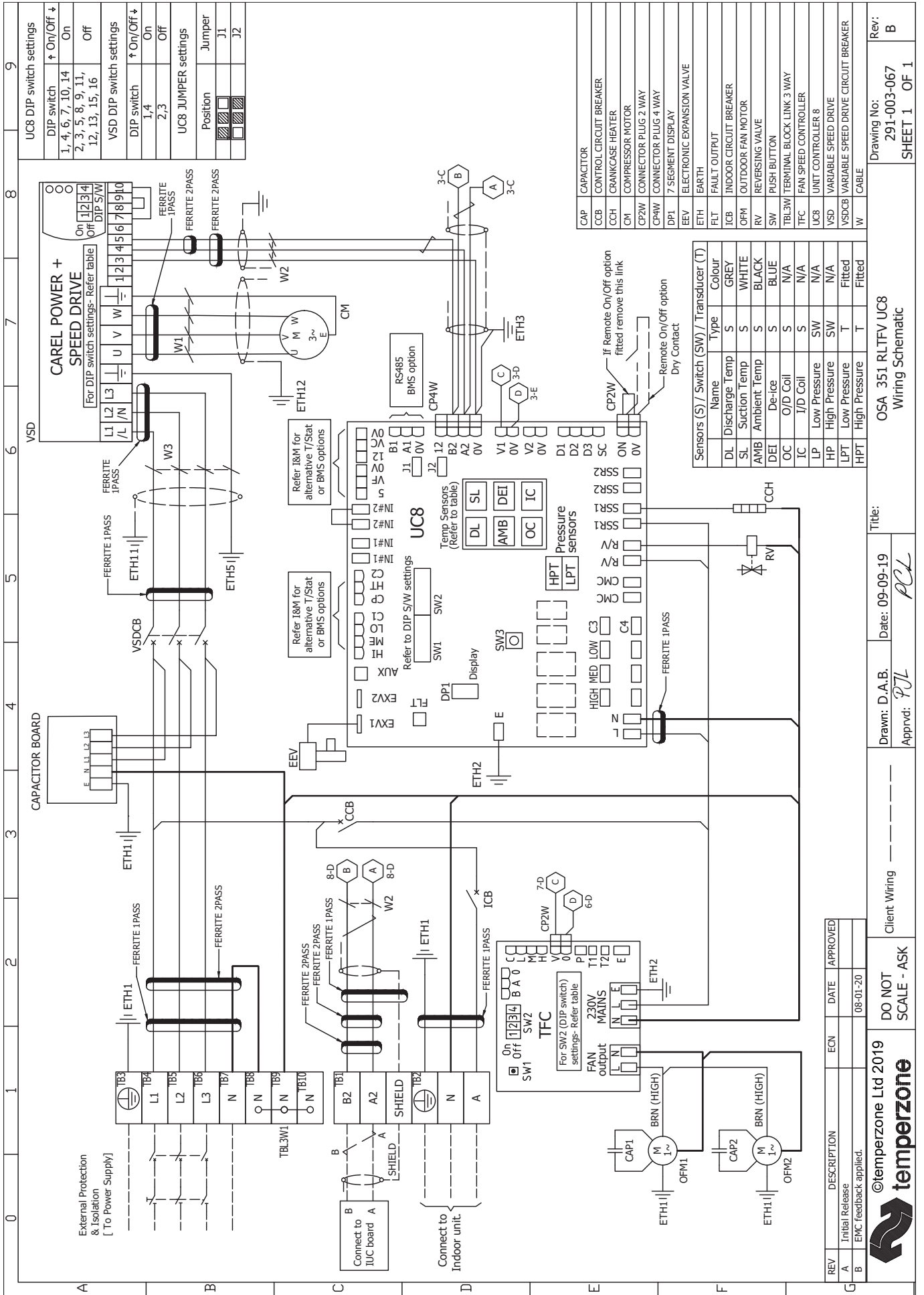
NOTE

Specifications are subject to change without notice due to the manufacturer's ongoing research and development programme.



OUTDOOR UNIT WIRING

Indoor-Outdoor Connection Wiring: refer 'Installation & Maintenance' pamphlet, page 6.



Rev: B
Drawing No: 291-003-067
SHEET 1 OF 1

Title: OSA 351 RLTV UC8
Wiring Schematic

Drawn: D.A.B. Date: 09-09-19
Apprvd: PTL

Client Wiring

DO NOT SCALE - ASK

©temperzone Ltd 2019

temperzone

REV	DESCRIPTION	ECN	DATE	APPROVED
A	Initial Release		08-01-20	
B	EMC feedback applied.			