

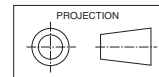
Model	MWU 180KS-S1
Item No.	502-018-101
Nominal Heating Capacity kW *1	16.1
Heating Capacity Range kW	3.7 ~ 20.0
Input Power kW *1	3.9
COP *1	4.11
Unit Controller	UC8
Design HEX differential °C	10
Water Flow rate l/min. *1	23
Min./Max. Inlet Water temp. °C (Heating)	10 / 35
Min. Operating temp. °C	-10
Design Water Temperature (EWT/LWT) °C	25 / 35
Entering Pressure Drop kPa *2	34 (5 psi)
Heat Exchanger	Thermoshell®
Max. Operating Water Pressure kPa	1000 (145 psi)
Electronic Expansion Valves	1
Refrigerant	R410A
Refrigerant Charge kg	2.7
Compressor type	Inverter scroll
Compressor oil type	POE 32-3MAF (or equivalent)
Power supply	1 ph. 230 ac 50Hz + N + E
Running current A	18
Max. Running Current A	29
RCD type recommended	type F, 30mA, 1 pole
Water connections	1" BSP male (x2)
Sound Power *3 (SWL) dB(A)	72
Sound Pressure @ 3m (SPL) dB(A)	56
Fan type	3 speed Axial 500mm
Pump type	Integrated BLDC
Max. Head Delivery of Pump m	8
Communication Options	BMS / Modbus
Net weight (excl. water) kg	169

*1 Rating conditions: 7/6 °C db/wb outdoor ambient; EWT 25°C; LWT 35°C

*2 Max. Pressure drop at Water Flow rate and rating conditions above.

*3 Radiated. BS 848.2 : 2004. Direct method of measurement (reverberant room).

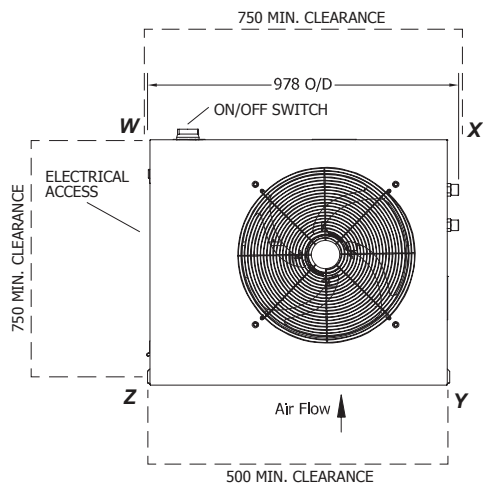
DIMENSIONS (mm)



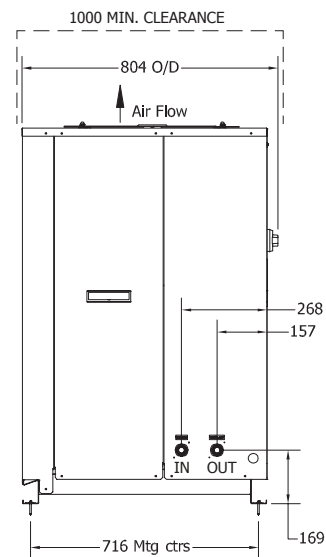
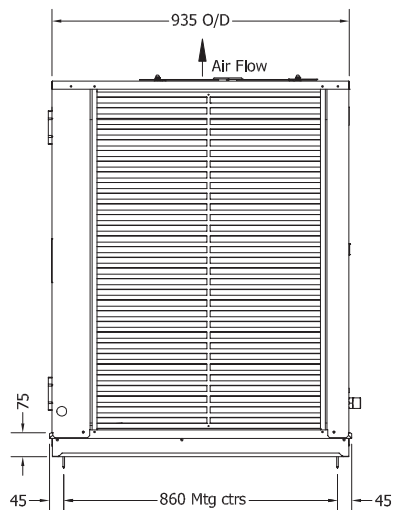
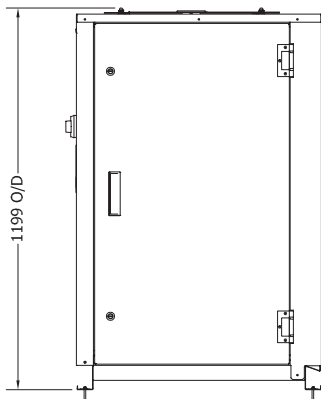
Not to Scale

MWU 180KS

POINT LOADS (kg)				
W	X	Y	Z	
50	41	42	36	

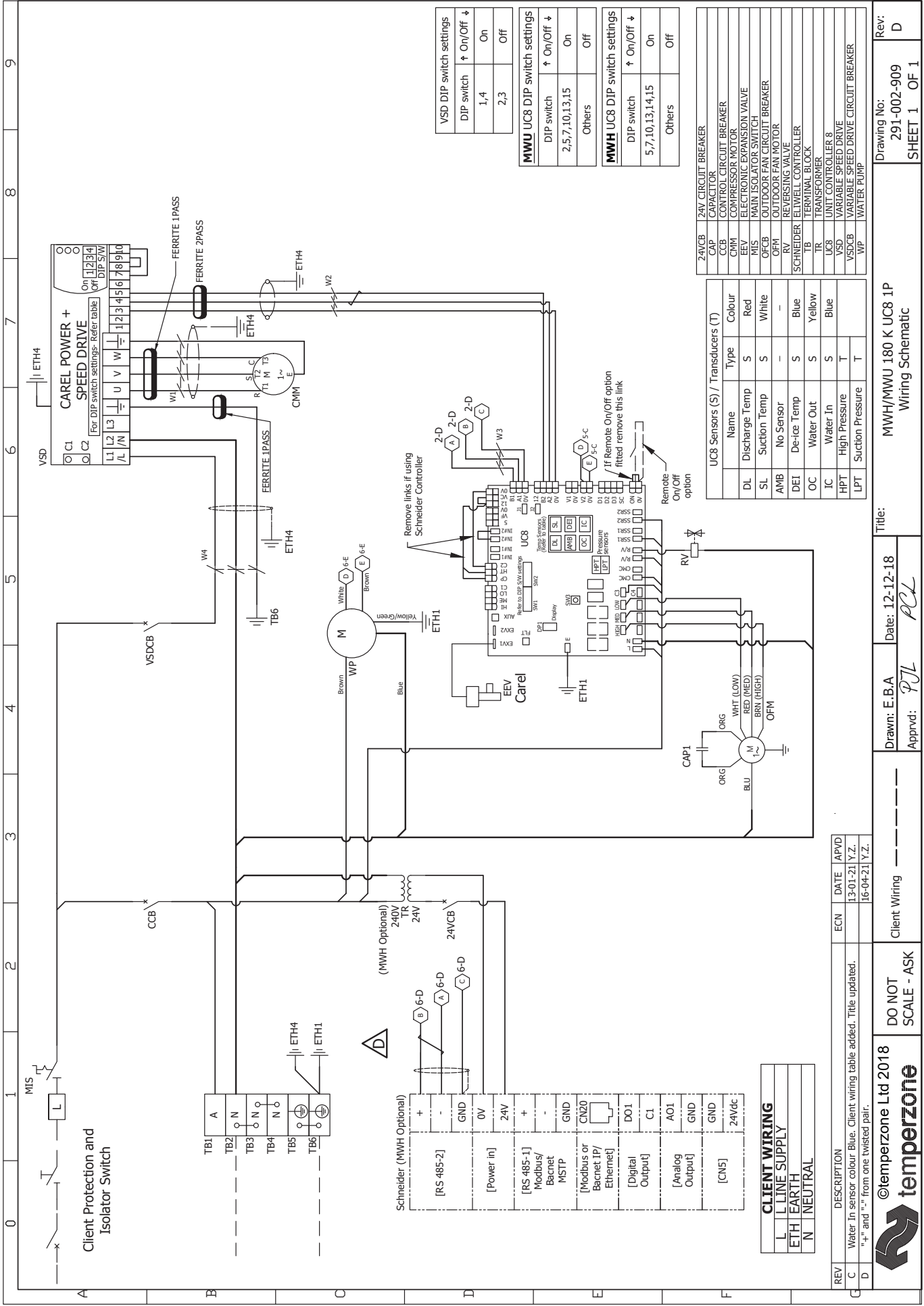


Water Conns:
2x BSP Male 25.4mm (1")



NOTE

Specifications are subject to change without notice due to the manufacturer's ongoing research and development programme.



Rev: D
 Drawing No: 291-002-909
 SHEET 1 OF 1

Title: MWH/MMW 180 K UC8 1P
 Wiring Schematic

Drawn: E.B.A
 Date: 12-12-18
 PCL
 Apprd: PTL

Client Wiring

DO NOT SCALE - ASK

©temperzone Ltd 2018
temperzone

REV	DESCRIPTION	ECN	DATE	APVD
C	Water In sensor colour Blue. Client wiring table added. Title updated.		13-01-21 Y.Z.	
D	"+" and "-" from one twisted pair.		16-04-21 Y.Z.	

CLIENT WIRING
 L LINE SUPPLY
 ETH EARTH
 N NEUTRAL

