


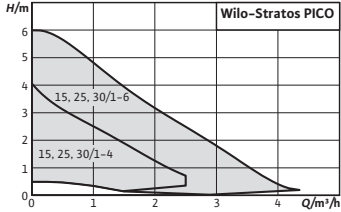
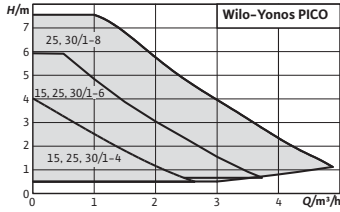
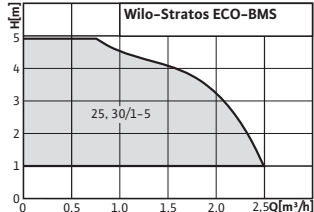


Heating, air-conditioning, cooling

Glandless pumps

Series overview

Series	Wilo-Stratos PICO	Wilo-Yonos PICO	Wilo-Stratos ECO...-BMS
Product photo			
Duty chart			
Application	All hot water heating systems, air-conditioning applications, industrial circulation systems.	All hot water heating systems, air-conditioning applications, industrial circulation systems.	Hot-water heating systems of all kinds, industrial circulation systems
Design	Glandless circulation pump with threaded connection, blocking-current proof EC motor and integrated electronic performance control.	Glandless circulation pump with threaded connection, blocking-current proof EC motor and integrated electronic power control.	Glandless circulation pump with threaded connection, EC motor with automatic power adjustment
Q _{max}	4 m ³ /h	3.5 m ³ /h	2.5 m ³ /h
H _{max}	6 m	6 m	5 m
Special features/ product advantages	<ul style="list-style-type: none"> • Very high degrees of efficiency due to ECM technology • High-efficiency pump especially for the single and two-family house and two to six-family house. • Up to 90% electricity savings compared to old uncontrolled heating pumps • Only 3 watts min. power consumption • Pre-selectable control modes for optimum load adaption Δp-c (constant differential pressure), Δp-v (variable differential pressure) can be combined with the Dynamic Adapt control function • Automatic setback operation • Integrated motor protection • LC display displaying the current consumption in watts and the cumulative kilowatt hours • Reset function for resetting the electricity meter or for resetting the settings to the factory settings • Bleeding routine for automatic venting of the rotor chamber • Quick electrical connection with Wilo-Connector • Very high starting torque for reliable starting 	<ul style="list-style-type: none"> • Very high degrees of efficiency due to ECM technology • High-efficiency pump especially for single and two-family houses, as well as for two to six-family houses. • Only 4 watts minimum power consumption • Preselectable control modes for optimum load adjustment Δp-c (differential pressure constant), Δp-v (differential pressure variable) • Integrated motor protection • LED for setting the setpoint and displaying the current consumption in watts • Venting function for venting the rotor chamber • Quick electrical connection with Wilo-Connector • Flexible installation due to compact design • Very high starting torque for reliable starting 	<ul style="list-style-type: none"> • Up to 80% electricity savings compared to uncontrolled circulation pumps • High-efficiency pump especially for single and two-family houses, as well as for two to six-family houses • Very high degrees of efficiency due to ECM technology • Very high starting torque for reliable starting • Quick connection with spring clips • BA connection: For connection to external monitoring units (such as building automation) • collective fault signal as potential-free contact, control input External Off, control input 0-10 V • Only 5.8 W min. power consumption • Standard thermal insulation for heating applications
Further information	Series information from page 22 Wilo online catalogue at www.wilo.com	Series information from page 26 Wilo online catalogue at www.wilo.com	Series information from page 31 Wilo online catalogue at www.wilo.com

Heating, air-conditioning, cooling

Glandless pump, standard high-efficiency pumps

Series description Wilo-Yonos PICO



New!

Design

Glandless circulation pump with threaded connection, blocking-current proof EC motor and integrated electronic power control.

Application

All hot water heating systems, air-conditioning applications, industrial circulation systems.

Type key

Example:	Wilo-Yonos PICO 30/1-4
Yonos PICO	High-efficiency pump (screw-end pump), electronically controlled
30/	Nominal connection diameter
1-4	Nominal delivery head range [m]
130	Overall length

Special features/product advantages

- Very high degrees of efficiency due to ECM technology
- High-efficiency pump especially for single and two-family houses, as well as for two to six-family houses.
- Only 4 watts minimum power consumption
- Preselectable control modes for optimum load adjustment Δp -c (differential pressure constant), Δp -v (differential pressure variable)
- Integrated motor protection
- LED for setting the setpoint and displaying the current consumption in watts
- Venting function for venting the rotor chamber
- Quick electrical connection with Wilo-Connector
- Flexible installation due to compact design
- Very high starting torque for reliable starting

Technical data

Approved fluids (other fluids on request)

Heating water (in accordance with VDI 2035)	•
Water-glycol mixtures (max. 1:1; above 20% admixture, the pumping data must be checked)	•

Permitted field of application

Temperature range at max. ambient temperature +25 °C	-10...+110 °C
Temperature range at max. ambient temperature +40 °C	-10...+95 °C

Electrical connection

Mains connection	1~230 V, 50/60 Hz
------------------	-------------------

Motor/electronics

Energy efficiency index* (EEI)	≤ 0.20
Motor protection	Not required (blocking-current proof)
Electromagnetic compatibility	EN 61800-3
Emitted interference	EN 61000-6-3
Interference resistance	EN 61000-6-2
Speed control	Frequency converter
Protection class	IP X2D
Insulation class	F

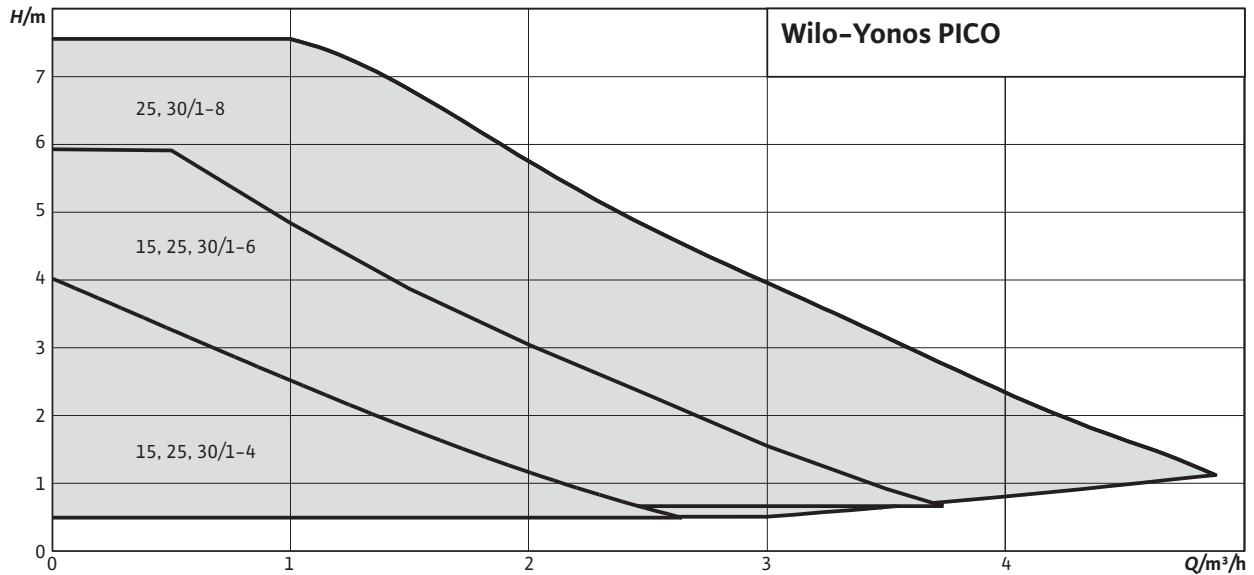
• = appropriate, - = not appropriate

The benchmark for the most efficient circulators is EEI ≤ 0.20.

* See also rating plate

Series description Wilo-Yonos PICO

Pump curves



Heating, air-conditioning, cooling

Equipment/function

Operating modes

- Δp -c for constant differential pressure
- Δp -v for variable differential pressure

Manual functions

- Operating mode setting
- Setting the pump output (delivery head)
- Bleeding function

Automatic functions

- Stageless power adjustment depending on the operating mode
- Automatic deblocking function

Signal and display functions

- Display of power consumption in W
- Display of the current pumping head for setting

Equipment

- Wrench attachment point on pump body
- Quick electrical connection with Wilo-Connector
- Bleeding function
- Blocking current-proof motor
- Particle filter

Scope of delivery

- Pump
- Wilo-Connector
- Gaskets
- Installation and operating instructions

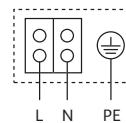
Options

- Yonos PICO...130 version with short port-to-port length of 130 mm

Accessories

- Screwed connections
- Adapter fittings
- Thermal insulation
- Angle plug with 2 m connecting cable

Terminal diagram



Blocking current-proof motor

Single-phase motor (EM) 2-pole - 1~230 V, 50 Hz

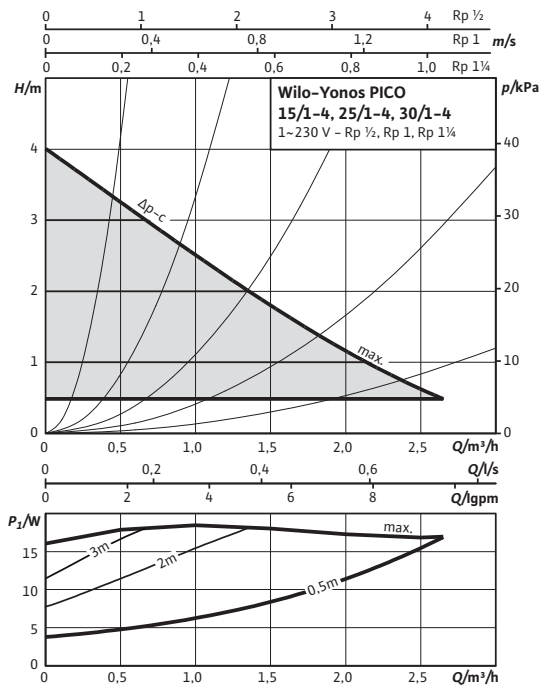
Heating, air-conditioning, cooling

Glandless pump, standard high-efficiency pumps

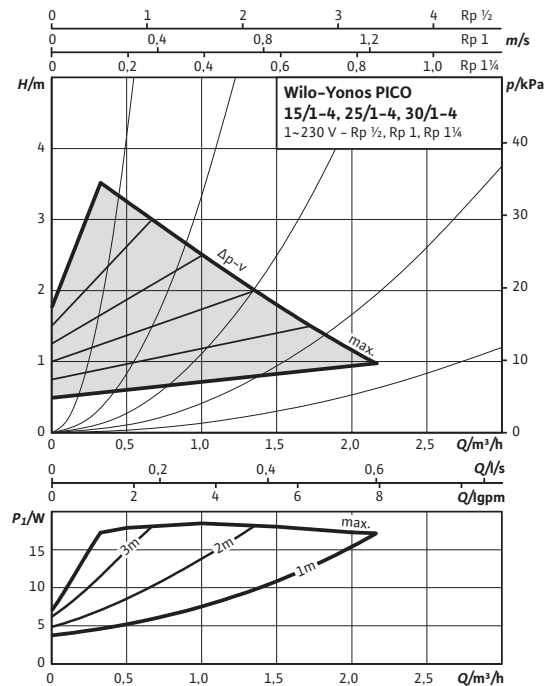
Wilo-Yonos PICO 15/1-4, 25/1-4 and 30/1-4

Pump curves

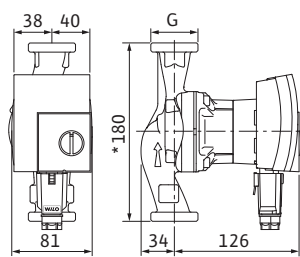
Δp -c (constant)



Δp -v (variable)



Dimension drawing



*Yonos PICO 15/... = 130 mm
Yonos PICO ../-...-130

Technical data

Rated pressure	PN 6
Energy efficiency index* (EEI)	≤ 0.20
Mains connection	1~230 V, 50/60 Hz
Speed n	800 - 3600 rpm
Power consumption P_1	4 - 20 W
Current consumption I	max. 0.26 A
Minimum suction head at 50/95/110 °C	0.5/3/10 m

Materials

Pump housing	Grey cast iron (EN-GJL-200)
Impeller	Plastic (PP - 40% GF)
Pump shaft	Stainless steel
Bearing	Carbon, metal impregnated

* See also rating plate

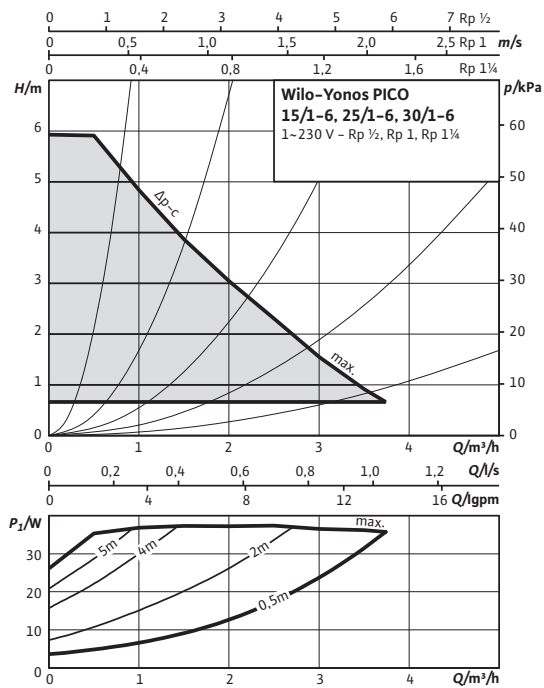
Information for order placements

Wilo-Yonos PICO...	Threaded pipe union	Thread	Overall length	Weight approx.	Art no.
			L_0	m	
			mm	kg	
Yonos PICO 15/1-4	Rp ½	G 1	130.0	2.0	4164011
Yonos PICO 25/1-4	Rp 1	G 1½	180.0	2.2	4164013
Yonos PICO 25/1-4-130	Rp 1	G 1½	130.0	2.0	4164017
Yonos PICO 30/1-4	Rp 1¼	G 2	180.0	2.2	4164015

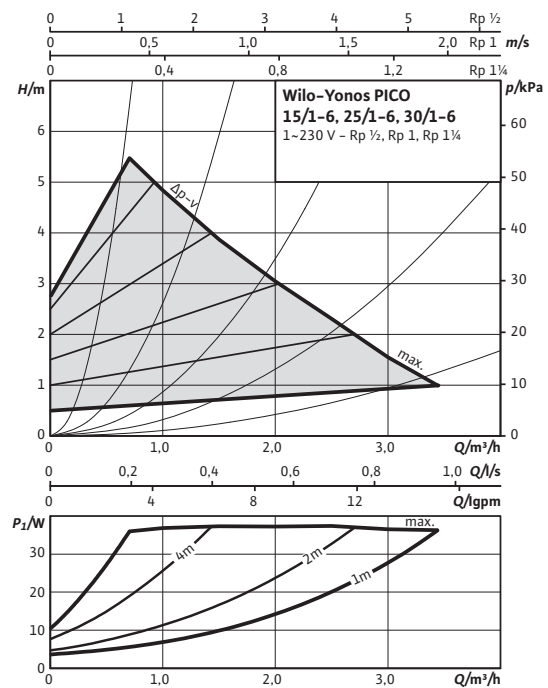
Wilo-Yonos PICO 15/1-6, 25/1-6 and 30/1-6

Pump curves

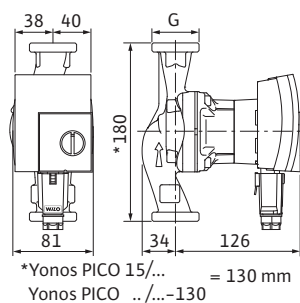
Δp-c (constant)



Δp-v (variable)



Dimension drawing



Technical data

Rated pressure	PN 6
Energy efficiency index* (EEL)	≤ 0.20
Mains connection	1~230 V, 50/60 Hz
Speed <i>n</i>	800 - 4700 rpm
Power consumption P_1	4 - 40 W
Current consumption <i>I</i>	max. 0.44 A
Minimum suction head at 50 / 95 / 110 °C	0.5 / 3 / 10 m

Materials

Pump housing	Grey cast iron (EN-GJL-200)
Impeller	Plastic (PP - 40% GF)
Pump shaft	Stainless steel
Bearing	Carbon, metal impregnated

* See also rating plate

Information for order placements

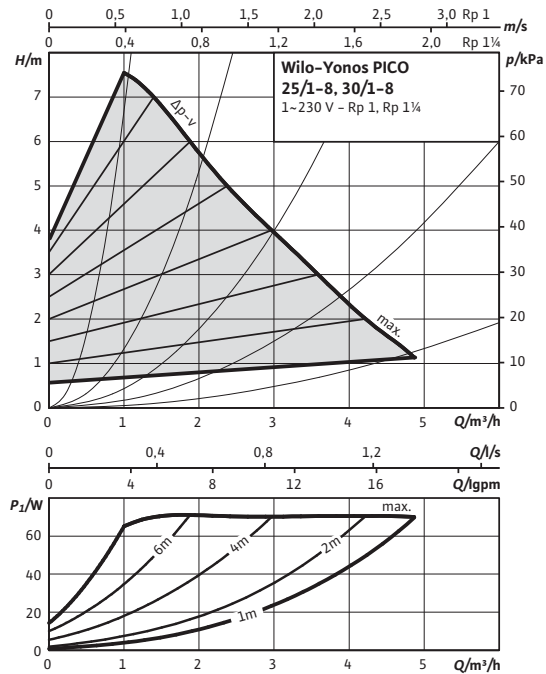
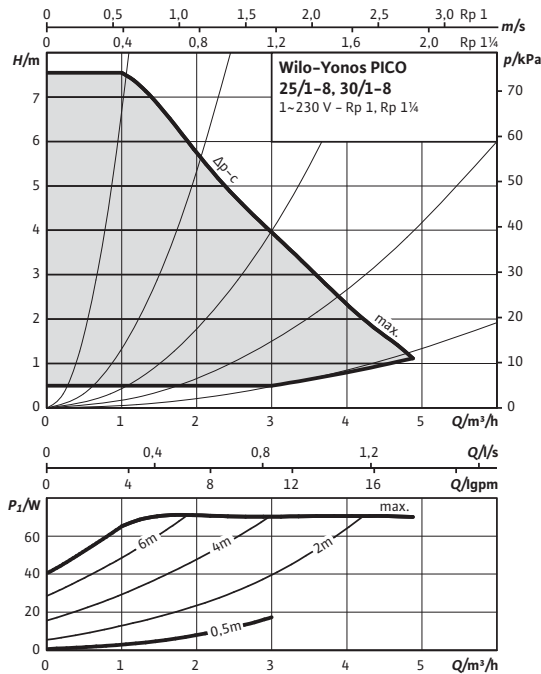
Wilo-Yonos PICO...	Threaded pipe union	Thread	Overall length	Weight approx.	Art no.
			<i>L</i> 0	<i>m</i>	
			mm	kg	
Yonos PICO 15/1-6	Rp ½	G 1	130.0	2.0	4164012
Yonos PICO 25/1-6	Rp 1	G 1½	180.0	2.2	4164014
Yonos PICO 25/1-6-130	Rp 1	G 1½	130.0	2.0	4164018
Yonos PICO 30/1-6	Rp 1¼	G 2	180.0	2.2	4164016

Heating, air-conditioning, cooling

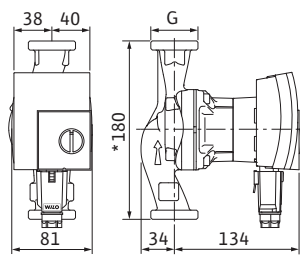
Glandless pump, standard high-efficiency pumps

Wilco-Yonos PICO 25/1-8 and 30/1-8

Pump curves



Dimension drawing



*Yonos PICO 15/... = 130 mm
Yonos PICO/...-130

Technical data

Rated pressure	PN 6
Energy efficiency index* (EEI)	≤ 0.20
Mains connection	1~230 V, 50/60 Hz
Speed <i>n</i>	1170 - 4800 rpm
Power consumption <i>P</i> ₁	4 - 75 W
Current consumption <i>I</i>	max. 0.66 A
Minimum suction head at 50 / 95 / 110 °C	0.5 / 3 / 10 m

Materials

Pump housing	Grey cast iron (EN-GJL-200)
Impeller	Plastic (PP - 40% GF)
Pump shaft	Stainless steel
Bearing	Carbon, metal impregnated

* See also rating plate

Information for order placements

Wilco-Yonos PICO...	Threaded pipe union	Thread	Overall length	Weight approx.	Art no.
			<i>L</i> ₀	<i>m</i>	
			mm	kg	
Yonos PICO 25/1-8	Rp 1	G 1½	180.0	2.3	4164019
Yonos PICO 30/1-8	Rp 1¼	G 2	180.0	2.3	4164020