

A Break-through in Performance and Efficiency

Infrared Heater

supraSchwank



Now also with
modulating operation



Distributed by
 **temperzone**
climate innovations

Schwank
INNOVATIVE HEATING SOLUTIONS



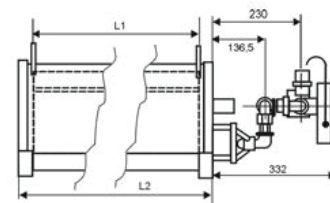
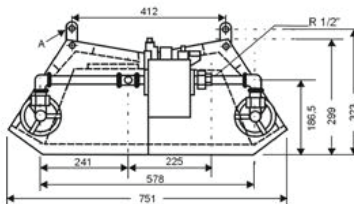
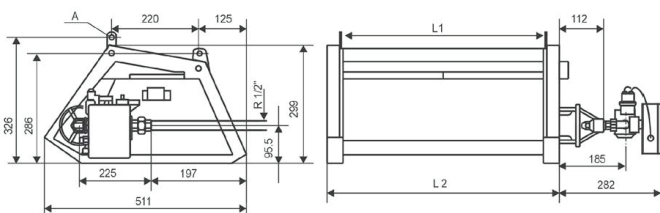
Infrared Heater- supraSchwank

- High radiant factor of 80.9%* and therefore extraordinary high efficiency
- Available as single stage, 2-stage or fully modulating versions
- With Isotherm insulation / minimisation of the convection losses
- Patented delta mixing chamber
- Combined high- and low-intensity infrared energy for a high radiant factor
- High-temperature stainless steel refractory mesh
- Schwank ceramic „honeycomb effect“ tiles [ceraSchwank]
- Even and comfortable heat distribution
- Short warm-up times
- Quality, long-life cycle and high comfort
- No dust swirls or draughts with supraSchwank luminous heater
- Quick and easy assembly
- Quality „Made in Germany“

* Radiant factor of supraSchwank 30 measured by DVGW laboratory according to DIN EN 419-2

supraSchwank 10 / 15 / 20 / 30

supraSchwank 40



		supraSchwank 10	supraSchwank 15	supraSchwank 20	supraSchwank 30	supraSchwank 40
Gas input * [kW]	Nat. gas H / L	7,7	11,5	15,4	23,1	30,8
	Propane	7,7	11,5	15,4	23,1	30,8
Gas consumption in m ³ /h **	Nat. gas H / L	0,77 / 0,90 m ³ /h	1,15 / 1,34 m ³ /h	1,54 / 1,80 m ³ /h	2,32 / 2,70 m ³ /h	3,08 / 3,59 m ³ /h
	Propane	0,60 kg/h	0,90 kg/h	1,20 kg/h	1,80 kg/h	2,40 kg/h
Weight [kg]	Appliance	17,0	22,4	29,0	38,0	46,0
	Control	1,4	1,4	1,4	1,4	1,4
Dimensions [mm]	Length L2	629	906	1184	1738	1181
	Length L1	553	830	1108	1662	1108
CE-Identifikation	CE-0085AU0376					

* The nominal heat load is the heat quantity supplied by the gas based on its thermal value H_n

**Gas consumption: Nat. gas H: H_n = 9,97 kWh/m³ Nat. gas L: H_n = 8,57 kWh/m³ Propane: H_n = 12,87 kWh/kg [at 0°C / 1013 mbar]

Applications

High efficiency heater for industrial buildings, warehouses or outdoor heating.

min. connection pressure

	1-stage	2-stage	modulating
Nat.gas H:	16 mbar	30 mbar	45 mbar
Nat.gas L:	22 mbar	24 mbar	45 mbar
Propane:	32 mbar	65 mbar	65 mbar
Butane:	50 mbar	65 mbar	65 mbar

max. connection pressure

Nat. gas/ Propane: 100 mbar

Electrical supply

Single-phase AC
 · 230 V, N, PE
 · 50 Hz [approx. 45 VA]

Exhaust flue indirect

according to DIN EN 13410 or DVGW G 638-1 or ÖVGW G 3/3

Gas connection

Threaded fitting R 1/2" [male]

Fixture

The heater to be mounted on 4 points [A] with steel cables or the like on the ceiling or wall brackets attached to the wall.



Hamilton
 30 Gallagher Drive, Melville,
 Hamilton 3026
 Ph: 07 839 2705
 E: tzhamilton@temperzone.com

Auckland
 38 Tidal Rd, Mangere South,
 Auckland 2022
 Ph: 09 279 5250
 E: nzsales@temperzone.com

Wellington
 6 Union Street, Petone,
 Lower Hutt 5012
 Ph: 04 569 3262
 E: wgtn@temperzone.com

Christchurch
 40 Cass Street, Sydenham,
 Christchurch 8023
 Ph: 03 379 3216
 E: chch@temperzone.com