

Powerful and Energy Efficient Infrared Heater

primoSchwank



Now also with
modulating operation



Distributed by
 **temperzone**
climate innovations

Schwank
INNOVATIVE HEATING SOLUTIONS

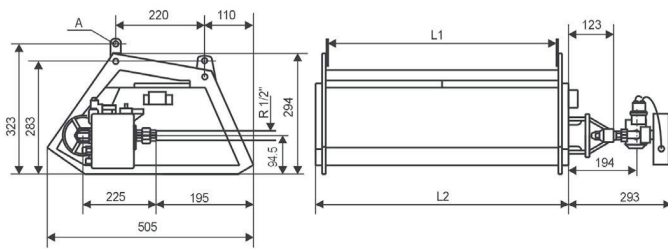


Infrared Heater – primoSchwank

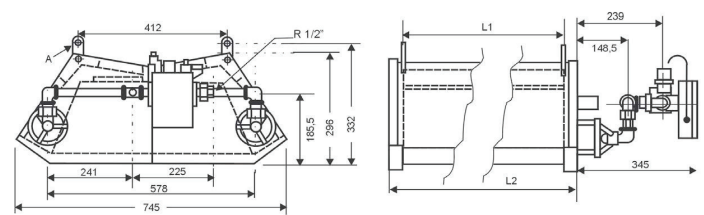
- Radiant factor of up to 69.5%*
- Available as single stage, 2-stage or fully modulating versions
- Patented delta mixing chamber
- Combined high- and low-intensity radiation for high radiant factor
- Schwank ceramic „honeycomb effect“ tiles [ceraSchwank]
- Uniform and comfortable heat distribution
- Short warm-up times
- Quality, long-life cycle and high comfort
- No dust swirls or draughts
- Quick and easy assembly
- Quality „Made in Germany“

* Radiant factor of a primoSchwank 30 measured by DVGW laboratory according to DIN EN 419-2

primoSchwank 10 / 15 / 20 /30



primoSchwank 40



		primoSchwank 10	primoSchwank 15	primoSchwank 20	primoSchwank 30	primoSchwank 40
Gas input* [kW]	Nat. gas H / L	9,7	14,5	19,4	29,1	38,8
	Propane	9,7	14,5	19,4	29,1	38,8
Gas consumption in m ³ /h **	Nat. gas H / L	0,97 / 1,13 m ³ /h	1,45 / 1,69 m ³ /h	1,95 / 2,26 m ³ /h	2,92 / 3,40 m ³ /h	3,90 / 4,53 m ³ /h
	Propane	0,76 kg/h	1,13 kg/h	1,52 kg/h	2,28 kg/h	3,01 kg/h
Weight [kg]	Appliance	10,0	14,0	17,5	23,0	30,1
	Control	1,4	1,4	1,4	1,4	2,3
Dimensions [mm]	Length L2	605	882	1160	1714	1160
	Length L1	553	830	1108	1662	1108
CE-Identifikation	CE-0085AU0374					

* The nominal heat load is the heat quantity supplied by the gas based on its thermal value $H_{i,n}$

** Gas consumption: Nat. gas H: $H_{i,n} = 9,97 \text{ kWh/m}^3$ Nat. gas L: $H_{i,n} = 8,57 \text{ kWh/m}^3$ Propane: $H_{i,n} = 12,87 \text{ kWh/kg}$ [bei 0°C / 1013 mbar]

** 1-stage natural gas H / L 35,0 kW

Applications

High efficiency heater for industrial buildings, warehouses or outdoor heating.

Min. connection pressure

	1-stage	2-stage	modulating
Nat. gas H:	20 mbar	30 mbar	45 mbar
Nat. gas L:	22 mbar	24 mbar	45 mbar
Propane:	50 mbar	65 mbar	65 mbar
Butane:	50 mbar	65 mbar	65 mbar

Max. connection pressure

Nat. gas/ Propane: 100 mbar

Electrical supply

Single-phase AC
 · 230 V, N, PE
 · 50 Hz [approx. 45 VA]

Exhaust flue indirect

according to DIN EN 3410 or DVGW G 638-1 or ÖVGW G 3/3

Gas connection

Threaded fitting R 1/2" [male]

Fixture

The heater to be mounted on 4 points [A] with steel cables or the like on the ceiling or wall brackets attached to the wall.



Hamilton
 30 Gallagher Drive, Melville,
 Hamilton 3026
 Ph: 07 839 2705
 E: tzhamilton@temperzone.com

Auckland
 38 Tidal Rd, Mangere South,
 Auckland 2022
 Ph: 09 279 5250
 E: nzsales@temperzone.com

Wellington
 6 Union Street, Petone,
 Lower Hutt 5012
 Ph: 04 569 3262
 E: wgtn@temperzone.com

Christchurch
 40 Cass Street, Sydenham,
 Christchurch 8023
 Ph: 03 379 3216
 E: chch@temperzone.com