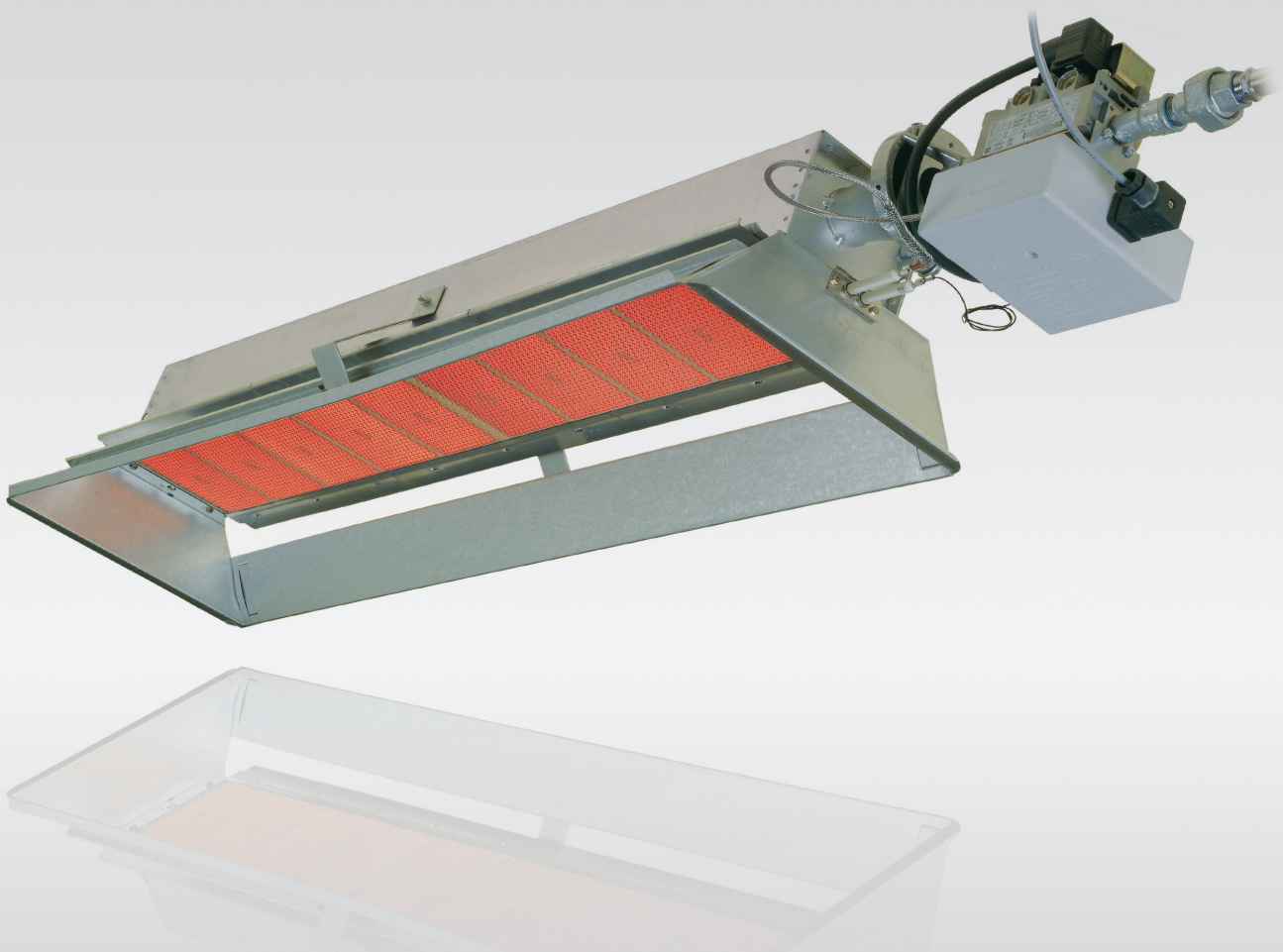


Simple and Robust: the Inexpensive Alternative

Infrared Luminous Heater

ecoSchwank



Distributed by

 **temperzone**
climate innovations

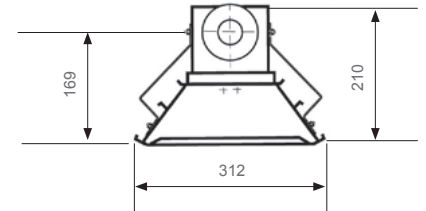
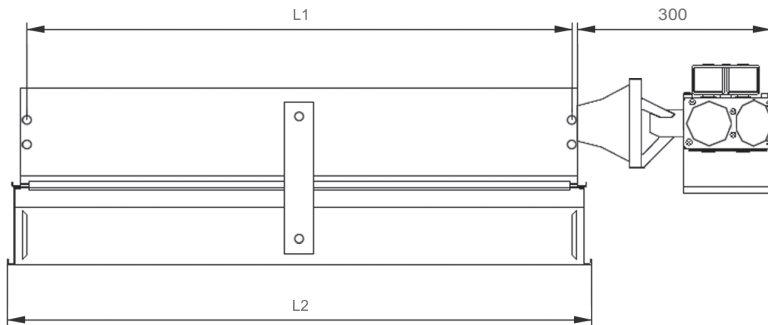
Schwank
INNOVATIVE HEATING SOLUTIONS



Infrared Luminous Heater - ecoSchwank

- Radiant factor of 50,4%*
- Robust and proven system
- Low investment costs
- Quick and easy assembly
- Schwank ceramic "Effect Tiles" [ceraSchwank]
- Even and comfortable heat distribution
- Short warm-up times
- Quality, long-life cycle and high comfort
- No dust swirls or draughty air
- Quality "Made in Germany"

* Radiant factor measured by DVGW laboratory at ecoSchwank 26 according to DIN EN 419-2



		ecoSchwank 6	ecoSchwank 10	ecoSchwank 13	ecoSchwank 18	ecoSchwank 26
Gas input * [kW]	Nat. gas	5.6	9.4	13.0	18.0	26.0
	Propane	5.6	9.4	13.0	18.0	26.0
Gas consumption in m³/h **	Nat. gas	0.56 m ³ /h	0.94 m ³ /h	1.3 m ³ /h	1.81 m ³ /h	2.61 m ³ /h
	Propane	0.43 kg/h	0.73 kg/h	1.01 kg/h	1.4 kg/h	2.02 kg/h
Weight [kg]	Appliance	3.45	4.85	6.25	8.25	10.45
	Controller	1.9	1.9	1.9	1.9	1.9
Dimensions [mm]	Length L1	282	466	651	928	1296
	Length L2	371	551	739	1014	1387
CE-Identification	CE-0085AP0459					

* The nominal heat load is the heat quantity supplied by the gas based on its thermal value $H_{i,n}$

**Gas consumption: Nat. gas H: $H_{i,n} = 9.97 \text{ kWh/m}^3$ Nat. gas L: $H_{i,n} = 8.57 \text{ kWh/m}^3$ Propane: $H_{i,n} = 12.87 \text{ kWh/kg}$ (at 0°C / 1013 mbar)
Nat. gas H: $W_{o,n} = 14.8 \text{ kWh/m}^3$ Nat. gas L: $W_{o,n} = 12.1 \text{ kWh/m}^3$ (at 0°C / 1013 mbar)

- **Applications**
High efficiency heater for industrial applications, warehouses or outdoor heating
- **Min. connection pressure**
Nat. gas H: 16 mbar
Nat. gas L: 22 mbar
Propane: 40 mbar
Butane: 40 mbar
- **Max. connection pressure**
Nat. gas/ Propane: 60 mbar
- **Electrical supply**
Single-phase AC
· 230 V, N, PE
· 50 Hz [ca. 40 VA]
- **Exhaust flue indirect**
according to DIN EN 13410 or DVGW G 638-1 or ÖVGW G 3/3
- **Gas connection**
Threaded fitting R 1/2" [male]
- **Fixture**
The heater to be mounted on 4 points [A] with steel cables or the like on the ceiling or wall brackets attached to the wall.



Hamilton
30 Gallagher Drive, Melville,
Hamilton 3026
Ph: 07 839 2705
E: tzhamilton@temperzone.com

Auckland
38 Tidal Rd, Mangere South,
Auckland 2022
Ph: 09 279 5250
E: nzsales@temperzone.com

Wellington
6th Union Street, Petone,
Lower Hutt 5012
Ph: 04 569 3262
E: wgtn@temperzone.com

Christchurch
40 Cass Street, Sydenham,
Christchurch 8023
Ph: 03 379 3216
E: chch@temperzone.com