

SPECIFICATIONS



Indoor Unit Horizontal discharge version (525-701-201)	ISD 950KBXH-P
Vertical discharge version (525-711-201)	ISD 950KBXV-P
Outdoor Unit (526-741-223)	OSA 950RKTBGV (digital)
Cooling capacity (net) ¹	89.8 kW
Nominal Cooling capacity range	18.6 ~ 93.0 kW
Heating capacity ¹	89.2 kW
Electrical input - cooling	30.1 kW
Electrical input - heating	26.6 kW
EER / AEER (cooling) ¹	3.11 / 3.10
COP / ACOP (heating) ¹	3.51 / 3.50
Unit Controller	UC8 (x2) / IUC
Refrigerant	R410A
Refrigerant precharge for 10 m	14.4 kg/sys.
Additional charge req'd for over 10 m	170 g/m/sys.
Base refrigerant charge OSA	12.7 kg/sys.
Maximum/extended line length ²	60 / 90 m
Separation limit: OSA above ISD	20 m
Separation limit: OSA below ISD	20 m
Suction line	35 mm OD (x2)
Liquid line	16 mm OD (x2)
Compressor oil type	POE 32-3MAF (or equivalent)
Additional oil charge over 40m line length	30 ml/m
Compressor type	digital + fixed scroll
Power supply via OSA ³	3 ph. 400V ac 50Hz + N + E
Compressor (3ph.) run amps at rating cond. ¹	24.5 A/ph
Compressor overload setting (digital/fixed)	32 A (x2)
Indoor fan motor size	EC Plug 500 dia. 2.8 kW (x2)
Rated indoor fan speed	5000 l/s
Indoor fan motor (3ph.) - full load	9.2 A/ph. (x2)
Outdoor fan motor (1ph.) - full load	2.7 A (x4)
Outdoor fan capacitor size	12 μ fd (x4)
Control circuit breaker (internal)	2 A
Aux. power outlet (1ph.) overload setting	10 A
Running amps (total system)	66 / 55 / 55 A
Max. running amps (total system)	84 / 74 / 74 A
RCD type recommended	type A, 30mA, 3 pole
Net weight ISD	401 kg
Net weight OSA	579 kg

Accessories:

ISD Filters – EU4/G4 rated, disposable	019-400-009 250x400x50 (x5) ⁴ 019-400-008 450x500x50 (x8)
ISD Filters – EU4/G4 rated, washable (NZ only)	019-400-039 250x400x50 (x5) ⁴ 019-400-038 450x500x50 (x8)

Optional Controls:

TZT-100 Room temperature controller	201-000-350
-------------------------------------	-------------

Refer to temperzone for other options, eg remote sensors, connection wires.

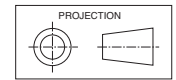
¹ Tested in accordance with AS/NZS 3823

² Refer to Temperzone for extended line length requirements

³ Voltage range: 380–440V.

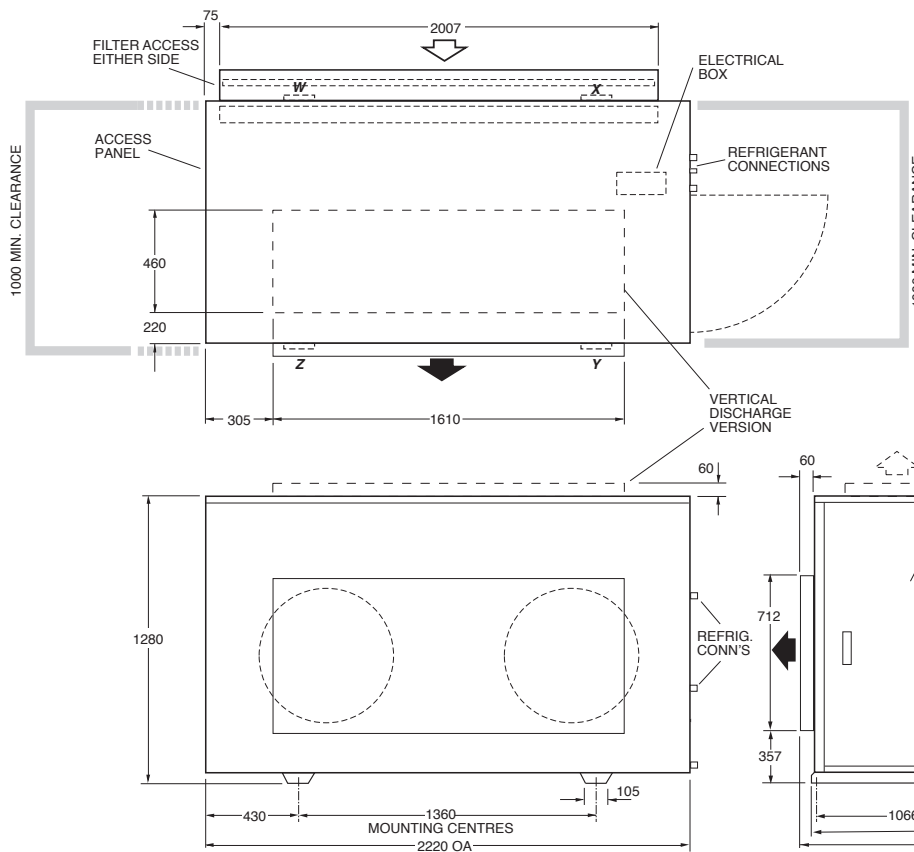
⁴ Filter sizes are nominal; refer to Temperzone for actual measurements.

DIMENSIONS (mm)



Not to Scale

ISD 950KBXH-P Indoor Unit

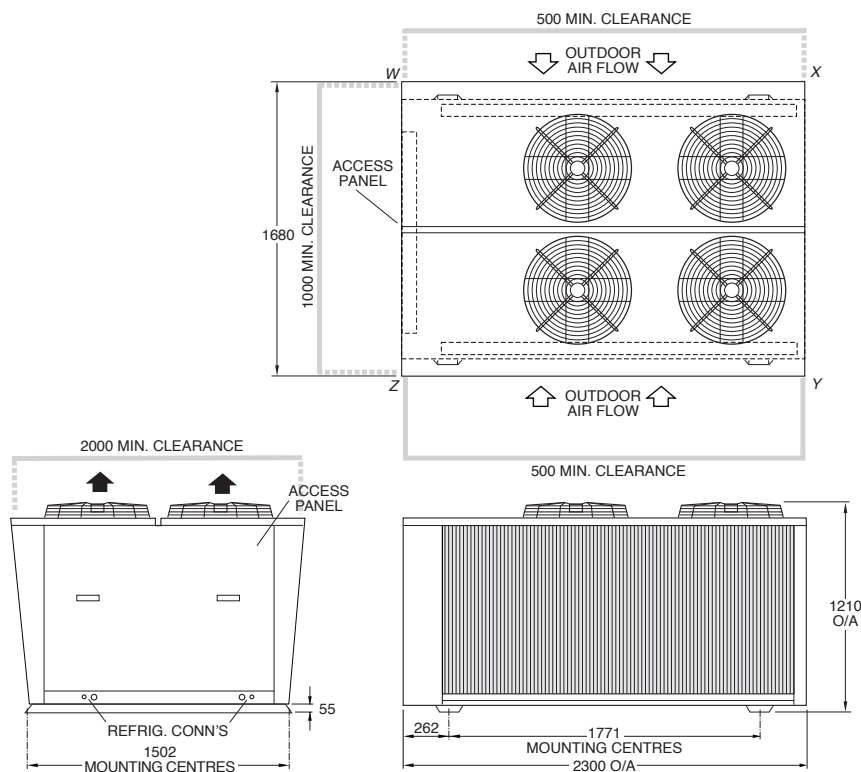


POINT LOADS (kg)			
W	X	Y	Z
116	134	76	75

Note: Fan motor can be accessed from panel above, below or front; no more than two panels at once.

Opposite hand version available with mirrored dimensions.

OSA 950RKTBGV Outdoor Unit



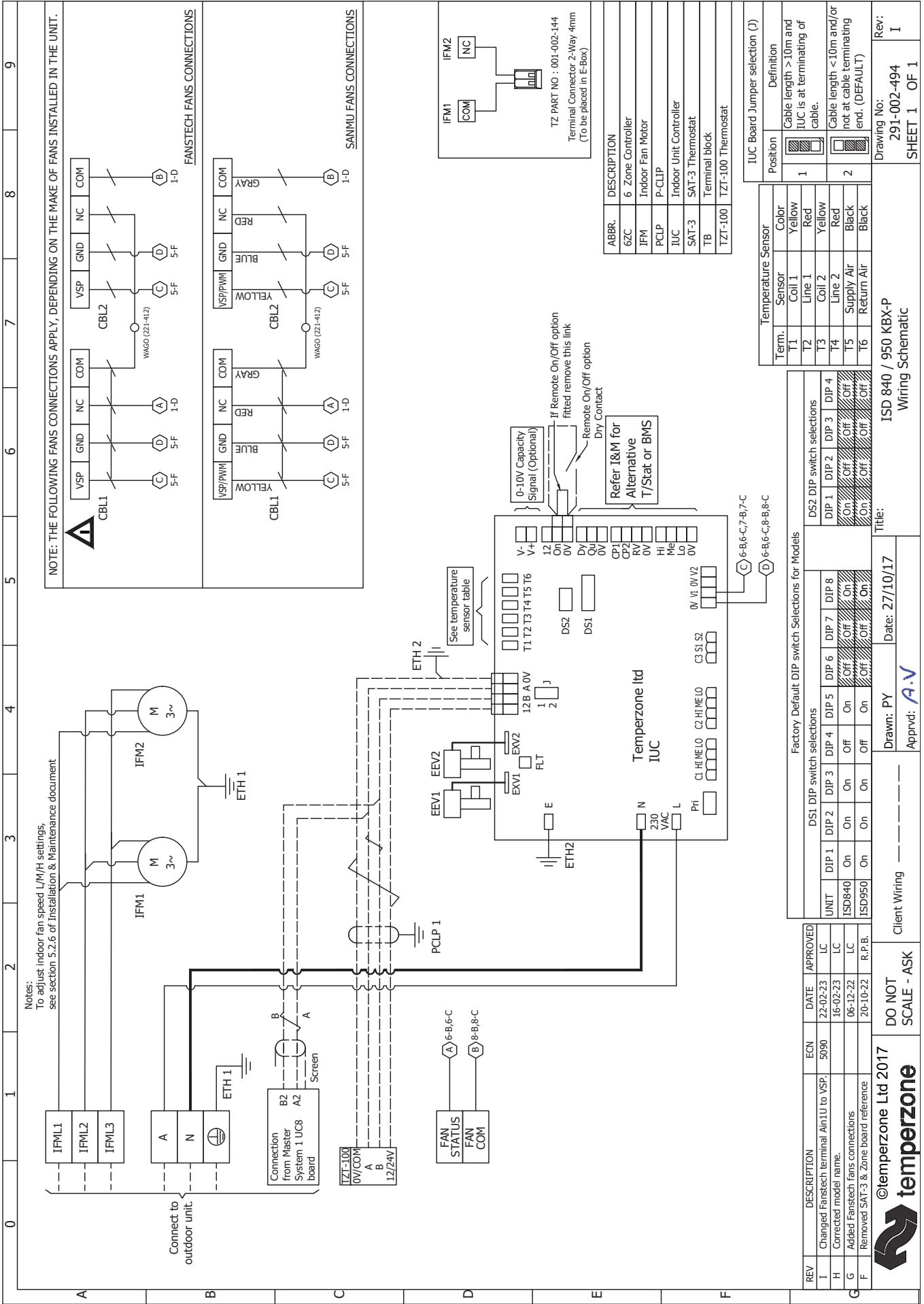
POINT LOADS (kg)			
W	X	Y	Z
185	100	95	199

Recommended Connecting Pipe Sizes
 Suction : 35 mm OD (x2)
 Liquid : 16 mm OD (x2)

NOTE

Specifications are subject to change without notice due to the manufacturer's ongoing research and development programme.

INDOOR UNIT WIRING



0 1 2 3 4 5 6 7 8 9

Important Notes:

1) Crankcase Heater Note
24 Hour power required for control circuit and crankcase heaters

- 2) Mode Selection
 - Switch on mains power to the controller and wait until the display shows a flashing decimal point.
 - Hold down pushbutton SW3 until the display shows the letter 'n', then release the button.
 - The display will show the currently selected expansion device mode. If the LED display is not showing '5', press the pushbutton until the LED shows '5'. Wait 30 sec for settings to save and controller to auto-restart.

3) TZT100 Note
To connect TZT100 to unit use 2 pair twisted cable - screen grounded. (F/UTP 24G (0.2mm²) or thicker recommended)

Sensors (S) / Transducers (T)		Name	Type	Colour
DL	Discharge Temp	S	S	RED
SL	Suction Temp	S	S	WHITE
AMB	Ambient Temp	S	S	BLACK
DEI	De-ice Temp	S	S	BLUE
LPT	Suction Pressure	T	T	
HPT	High Pressure	T	T	

SAT-3 & TZT100 connection to UC8 terminals		SAT-3	TZT100 Terminals
UC8 terminals			
12	12V	B	12/24V
B2	B	A	B
A2	A	GND	A
0V	GND		0V/COM
Screen to 0V			

UC8 DIP switch settings (No.1)		UC8 DIP switch settings (No.2)	
DIP switch	↑ On/Off ↓	DIP switch	↑ On/Off ↓
1,2,4,7,8,10	On	1,4,7,8,10,11	On
All Others Off	Off	All Others Off	Off

TFC DIP switch settings	
DIP switch	On/Off
1, 2, 3, 4	On
	Off

24VCB	24 VOLT CIRCUIT BREAKER
CAP	CAPACITOR
CBL	CABLE
CCB	CONTROL CIRCUIT BREAKER
CCH	CRANKCASE HEATER
CMC	COMPRESSOR CONTACTOR
CMCB	COMPRESSOR CIRCUIT BREAKER
CMM	COMPRESSOR MOTOR
CMOL	COMPRESSOR OVERLOAD
CMPT	COMPRESSOR MOTOR PROTECTION
EEV	ELECTRONIC EXPANSION VALVE
E1TH	EARTH
FRB	FAULT RELAY BOARD
IFC	INDOOR FAN CONTACTOR
IFCB	INDOOR FAN CIRCUIT BREAKER
IFM	INDOOR FAN MOTOR
IBB	INSULATED BUS BAR
MIS	MAIN ISOLATOR SWITCH
MV	MODULATING VALVE
OFCB	OUTDOOR FAN CIRCUIT BREAKER
OFM	OUTDOOR FAN MOTOR
PR	PHASE RELAY
PLR	PHASE LOST RELAY
RCBO	RESIDUAL CURRENT CIRCUIT BREAKER WITH OVERLOAD
RV	REVERSING VALVE
SPS	SINGLE PHASE SOCKET
TB	TERMINAL BLOCK
TFC	TRIAC FAN CONTROLLER
TJ	TERMINAL JOINER
TR	TRANSFORMER
UC8	UNIT CONTROLLER 8

REV	DESCRIPTION	ECN	DATE	APPROVED
H	Corrected model name.		16-02-23	LC
G	Connection at C1M2, C2M2. Swapped TB8 TB10		16-12-22	RPB
F	Added TB 16 and its connection to UC8 sys1		07-11-22	RPB
F	Total number of sheets 2 now was 3 earlier		01-11-22	RPB



DO NOT SCALE - ASK

Client Wiring

Drawn: PYU
Approved: A.V

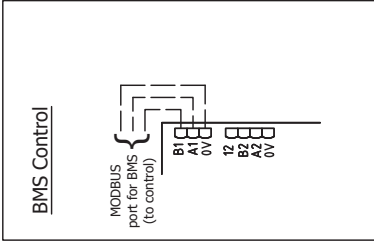
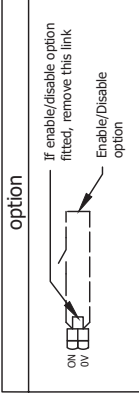
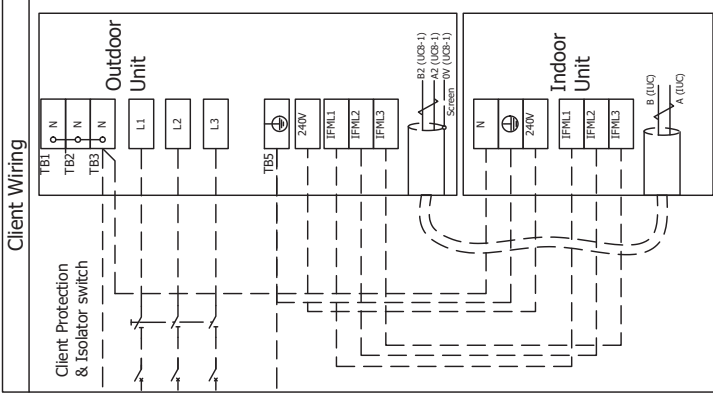
Title:

Date: 04/12/18

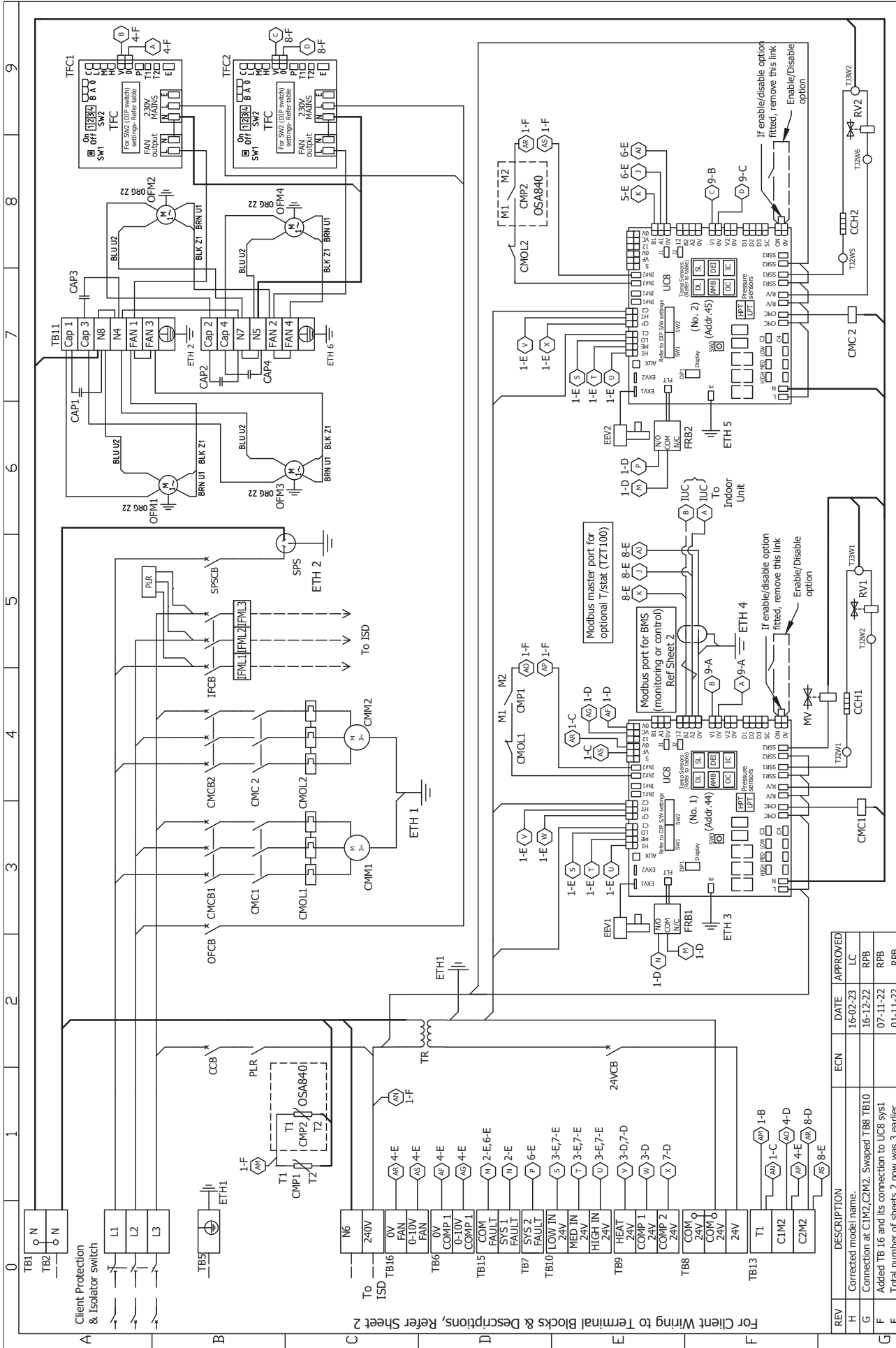
OSA 840 / 950 RKTBGV UC8
Wiring Schematics

Drawing No: 291-002-497
SHEET 2 OF 2

Rev: H



OUTDOOR UNIT WIRING



REV	DESCRIPTION	ECN	DATE	APPROVED
H	Corrected model name.		16-02-23	LC
G	Connection at C1M2, C2M2, Swapped TB8 TB10		16-12-22	RPB
F	Added TB 16 and its connection to UC8 sys1		07-11-22	RPB
F	Total number of sheets 2, now was 3 earlier		01-11-22	RPB

DO NOT SCALE - ASK	Client Wiring	Title: _____
Drawn: PYU	Date: 04/12/18	_____
Approved: A.V		

OSA 840 / 950 RKTBCV UC8	Rev: H
Wiring Schematics	Drawing No: 291-002-497
	SHEET 1 OF 2