



Clever AHU's



Product Overview

August-21



Air Handling Units



NZ's No.1 Premier, Fully Customised, NZ Made Air Handling Units.



History / Sales / Benefits

- Originated from “Clever srl”, an AHU manufacturer from Milan, Italy.
- Manufactured in New Zealand since 1996.
- Manufactured >8,000 AHU’s to date.
- Hamilton Factory capable of 30 – 50 AHU’s per month.
- Typically, **20% lighter** than other steel AHU’s.
- NZ’s only **Full Aluminium** Air Handling Unit suitable NZ conditions.
- Marine grade aluminium **Titania & Anodised** finish as standard.
- Full 12 Months **PARTS & LABOUR** Warranty
- [Optional Warranty extension to **3 years**]



Markets



Major Customers

- Hospitals & Health Care
- Universities & Schools
- Pharmaceutical Labs
- Swimming Pools
- Hotel & Accommodation

Others

- Recreation Facilities
- Data Centers
- Commercial Offices
- Process & Food Industry
- Agriculture

Sales by Location

- Auckland > 2,000 AHU's
- Hamilton > 900 AHU's
- Rotorua > 150 AHU's
- Wellington > 1,300 AHU's
- Christchurch > 1,200 AHU's
- Australia > 250 AHU's

SB Series

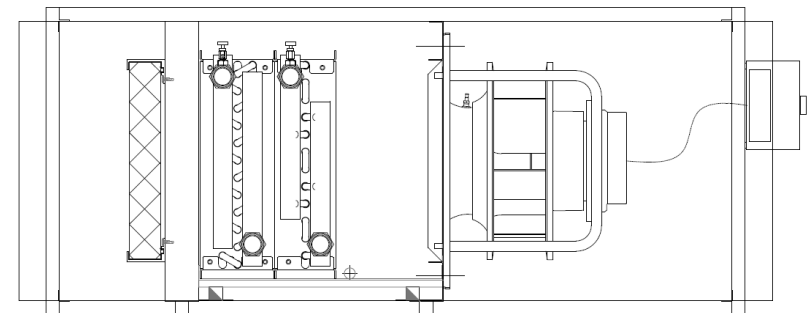
Large Customisable Fan Coil Unit

- High Quality, Double Skin fan coil unit
- Filter - 46mm panel in channel
- Coils– ex- Stock 3/8" water cooling / heating coils (1 row / 3 row)
- EC Plenum fan & potentiometer
- Optional - Electric heating elements

Features

- Quick delivery
- High static pressure
- Sold > 1,300 FCU's to date

Model	Max L/S	Width	Height
SB015	420	800	450
SB020	620	1100	450
SB025	850	1400	450
SB030	1050	1400	550
SB040	1250	1650	550
SB050	1500	1800	550





MC Series

Customisable Air Handling Unit

- Full range completely customizable
- Air Volume < 21,000 L/S
- Max. 2000 Pa (TSP)
- Dampers, Filters, coils, Fans....

Features

- 23, 43, & 45 Tropical Panels
- High quality
- 4 – 6 Week quick delivery
- Sold > 5,000 AHU's to date



Model	Max L/S	Width	Height	Base
MC013	500	730	685	100
MC016	550	775	685	100
MC020	630	820	685	100
MC025	730	820	760	100
MC030	900	1000	760	100
MC040	1150	1090	830	100
MC050	1350	1180	900	100
MC060	1800	1360	960	100
MC080	2250	1675	960	100
MC100	2650	1675	1055	100
MC120	3150	1810	1175	100
MC150	4150	1810	1400	100
MC190	5000	2125	1400	100
MC240	6000	2125	1660	100
MC300	7500	2395	1800	100
MC360	9000	2860	2000	140
MC460	12,500	3400	2200	140
MC580	14,000	3800	2300	140
MC720	17,500	4400	2400	140
MC1000	21,000	5120	2400	140

MT Series – Standard AHU

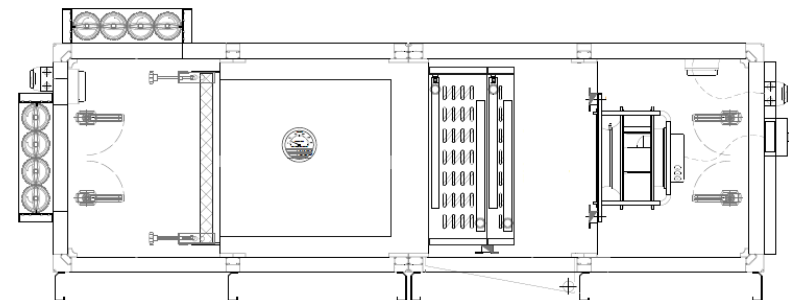
Temperzone Standard Air Handling Unit

- Standard AHU range
- Inlet F/A & R/A dampers
- G4 panel & F7 bag filters + gauge
- 6 row cooling coil + 2 row heating coil
- EC plenum fan & potentiometer
- Tropical Profile and 50mm Thermal Break double skin panels
- Optional Roof and TWS Louvre for Outdoors

Features

- Quick delivery
- Lower price
- Economical via bulk purchase of parts

Model	Max L/S	Width	Height	Base
MT030	725	800	800	100
MT060	1500	1400	900	100
MC120	3000	1400	1400	100
MT180	4500	2050	1400	100
MT270	6750	2050	2050	100
MT360	9000	2720	2050	100
MT450	11250	3370	2050	140
MT540	13500	4020	2050	140



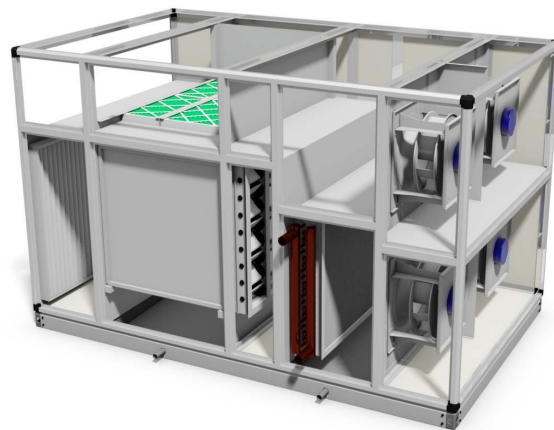
MXR Series

Heat Recovery Air Handling Units

- Air / Air plate heat exchanger
- Rated H4 to EN13053:2019 , >60% Energy Efficiency.
- Tropical Profile and 50mm Thermal Break double skin panels
- Epoxy fin and painted metal finish

Features

- Compact size, small footprint
- Indoor / Outdoor location
- HXR Face & By-Pass Damper

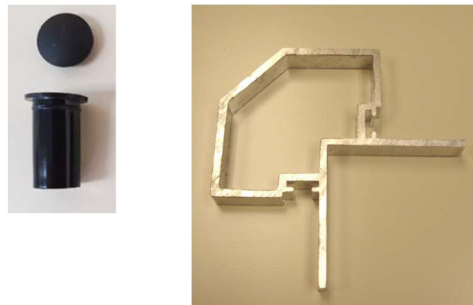


Model	Max L/S	Width	Height	Base
MXR030	900	1840	1175	100
MXR060	1810	1840	1500	100
MXR100	2800	1840	1710	100
MXR150	4200	2260	1900	100
MXR200	5600	2260	2200	100
MXR275	7650	2900	2240	140
MXR360	10,000	3440	3200	140

Standard MC Profiles

Standard 40 x 23

- Small aluminium profile
- < 9000 l/s < MC300
- 40mm profile
- 23mm panels, nylon corner node
- Mech. Fixed door rubber



Standard 60 x 43

- Large aluminium profile
- > 9000 l/s > MC360
- 60mm profile
- 43mm panels, nylon corner node
- Mech. Fixed door rubber



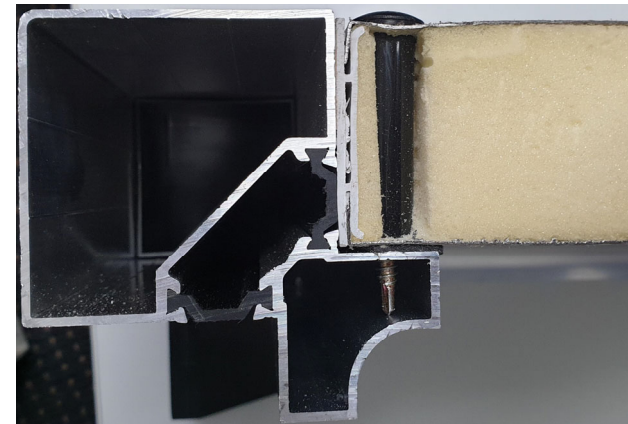
Tropical Profile – Thermal Break

T2 / TB2 Tropical Profile System

- Aluminium Tropical Profiles
- Insulated Spacer
- Thermal break Panels
- Nylon corner node
- Door extrusion with integral seal

Features

- Greatest thermal performance available
- System tested to DIN EN 1886
- Suit very low S/A temperatures < 9°C
[Humid Environments]

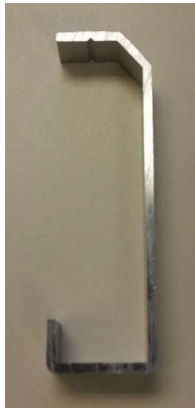


Mechanical Strength	D1	D2	D3	D4
Air Leakage	L1	L2	L3	L4
Thermal Transmittance	T1	T2	T3	T4
Thermal Bridging	TB1	TB2	TB3	TB4

Base Channel

100mm Channel

- Anodised aluminium
- 100 x 36mm channel
- 3.0 mm Heavy Alum. Profile cut corner (Anodised finish)



140mm Channel

- Anodised aluminium
- 140 x 37mm channel
- 6.0 mm Heavy Alum. Profile cut corner (Anodised finish)



Transit Bracket

With timber pallet base



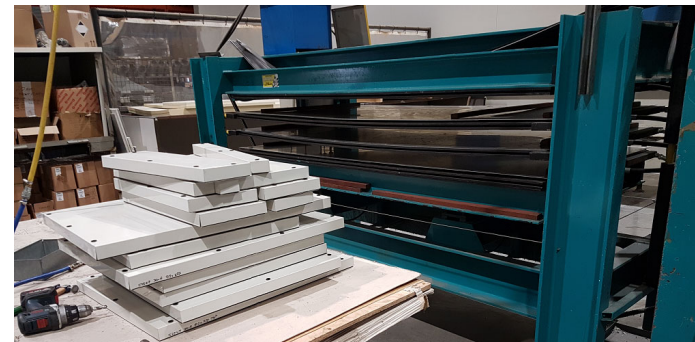
Hot Press Panels

Double Skin Panels

- Two layers of metal trays with pre-cut foam infills
- Standard 18, 23 & 43mm thick
- Rigid polyurethane foam insulation, Density - 40kg/m³
- Water activated, heat curing 100% glue process in 15 minutes

Tropical

- 50mm thermal break panel with insulated spacer



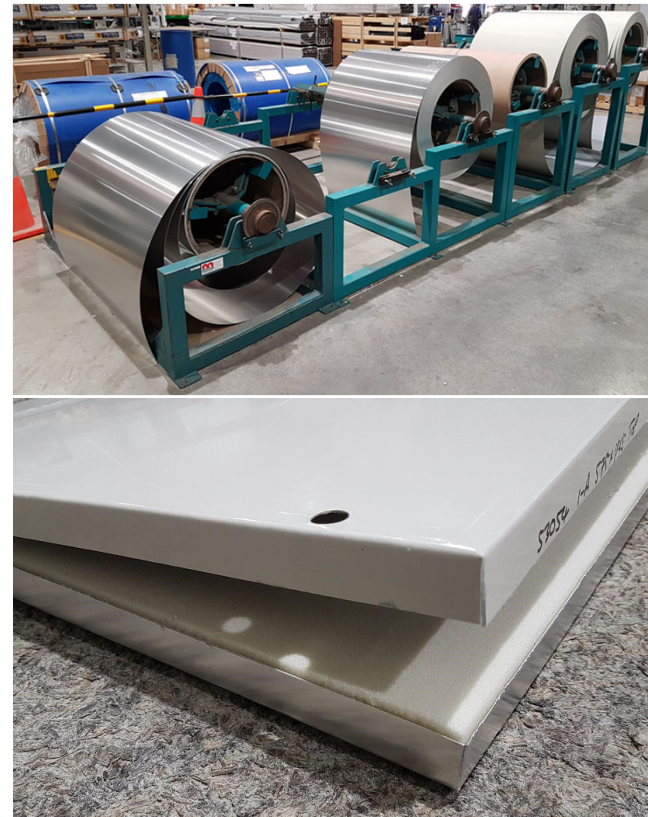
Panels Linings

Panel Linings [Standard]

- Outer – Marine Grade 5005 H32 Aluminium coated “Titania”
- Inner – Unpainted Marine Grade 5005 H32 Aluminium

Options

- Stainless steel 304 / 316
- Wet spray finish (Any colour)
- Epoxy coated (pools, high corrosion)
- M/G Alum. Perforated Lining over additional 25/50mm acoustic insulation



Plenum Fans – AC Motors

ZIEHL – ABEGG Type ER

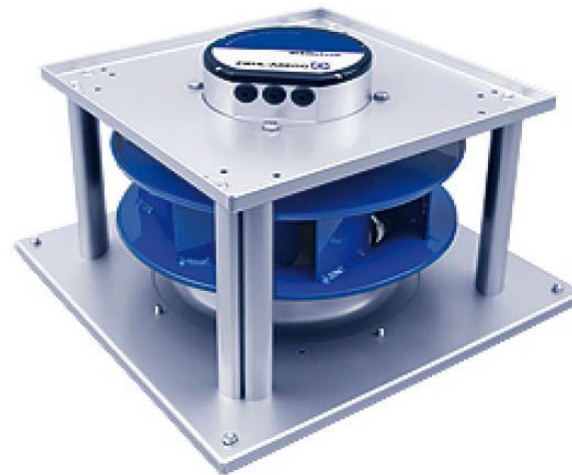
- Backward curve centrifugal impellor
- 0.55 to 55kW AC Motor (2, 4, 6, & 8 pole)
- 220ø to 630ø composite impellor
- 710ø to 1100ø metal impellor
- Must be operated via V.S.D



Plenum Fans – EC Motors

ZIEHL – ABEGG Type GR

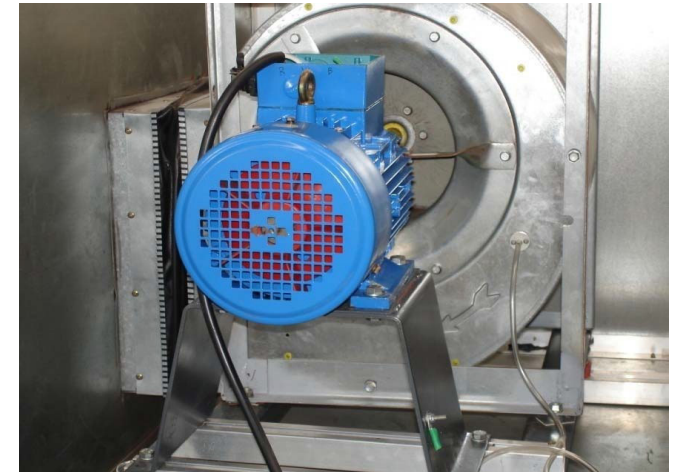
- Backward curve centrifugal impellor EC Motor
- Operated via 0 – 10 VDC Potentiometer or BMS
- 220ø to 630ø composite impellor
- 0.49kW 1 Phase to 5.6kW 3 Phase
- Alarm Fault relay
- Fault LED Indicator
- All Fans wired to external terminal block



DIDW Centrifugal Fan

BELT DRIVEN NICOTRA FANS

- Forward Curve type AT & ADH
- Backward Curve type RDH
- Drive belt transmission
- Direct coupled
- Replacement fans



Coils

COIL OPTIONS

- Chiller water, LTHW glycol solution mixture
- DX refrigerants, R410A, R32
- Evaporator & Condenser
- Steam (M&I certified)
- 3/8", 5/8" copper tube & headers BSP nipples
- Epoxy pre-coated aluminium fins [1000 Hrs]

Options

- Stainless steel tube & framework
- NZ Blygold Treatment
- Heresite Dip [2000Hrs] coils
- NZ / Overseas coil suppliers
- Easi-flo solder for H2S environments



DX Coils – Temperzone OSA

Customised DX heat pump coil & Temperzone OSA outdoor unit

- DX heat pump coil (cooling & heating)
3/8" copper tube coil customized to match duty
- R410A, R32 Refrigerant



DX Coils – Hitachi DX – AHU Kit

Specialised DX Coils / PAC AHU Controllers

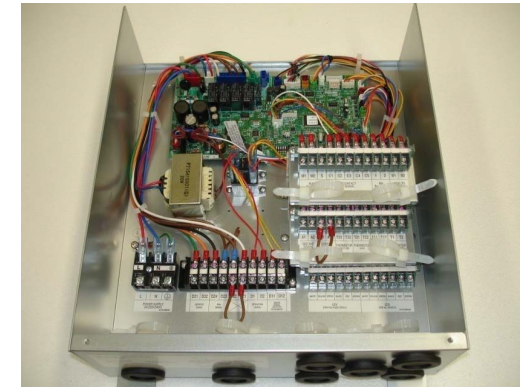
- DX Heat pump coil (cooling & heating) AHU
- Digital controller, thermocouples sensors fitted
- R410A Refrigerant
- Electronic control valves (ELV's)



DX Coils – Mitsubishi Electric

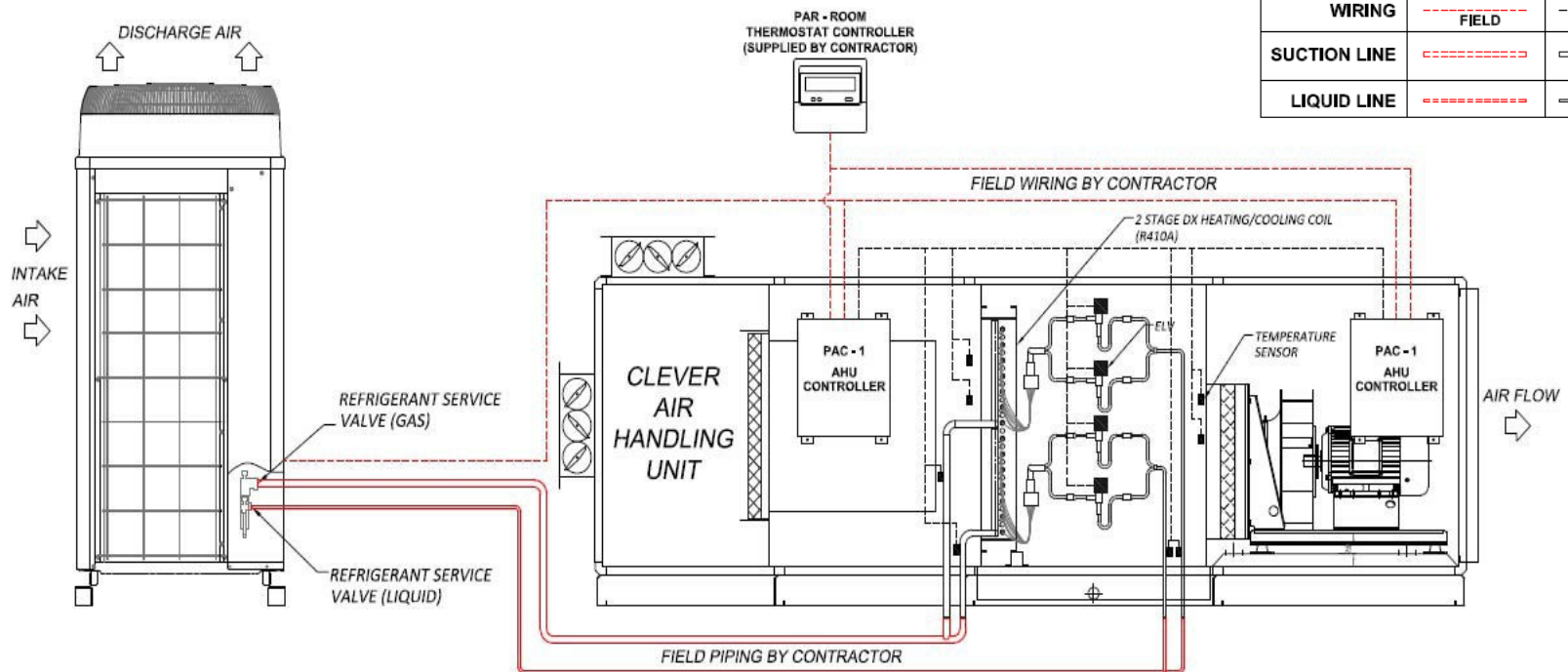
Specialised DX Coil / PAC AHU Controllers

- DX Heat pump coil (cooling & heating)
PAC-AH digital
- PAC Controller, thermocouples sensors
- R410A Refrigerant
- Electronic control valves (ELV's)
- Proven Sales History >500 PAC-AH controllers fitted to date
- No need for electric pre-heat
(Heats @ -15°C with full fresh air)
- Exported to Australia & more...



DX Arrangement – Typical AHU

Typical Setup – Hitachi & Mitsubishi

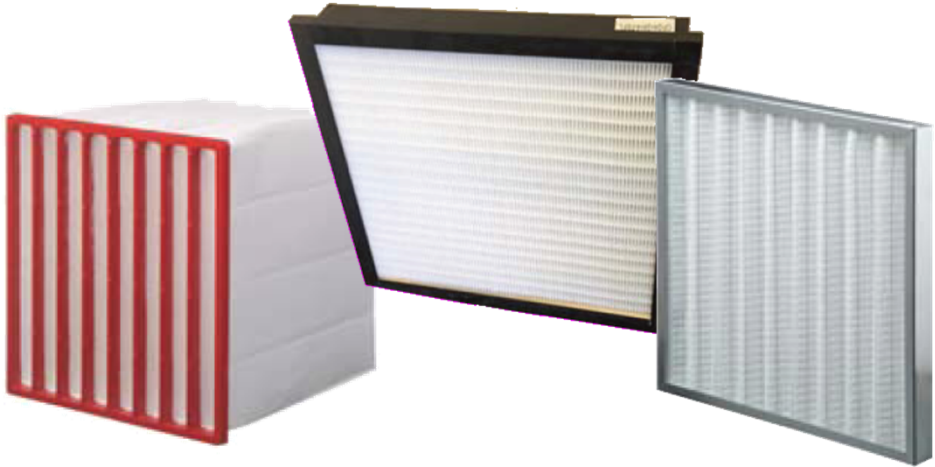


LEGEND		
	BY CONTRACTOR	BY EPI
WIRING	----- FIELD	----- AHU
SUCTION LINE	-----	=====
LIQUID LINE	-----	=====

Filters

All Filter Media Available

- Depth
- 22, 44, 96mm panels
- 96 & 292mm rigid cartridges
- 380 & 600mm bag filters



Media

- ISO 16890 standard certified media

Class	ISO ePM1	ISO ePM2.5	ISO ePM10	ISO Coarse
G3	-	-	-	>80
G4	-	-	-	>90%
M5	-	-	> 50%	-
M6	-	50 - 65%	> 60%	-
F7	50 - 65 %	65 - 80%	>85%	-
F8	65 - 80 %	>80 %	>90%	-
F9	>80 %	>95 %	>95%	-

Filters – Panel Filters

Washable Panel Filter C/W Sealed Channel

- Purpose design aluminium filter channel
- Brush seal tape mechanically mixed
- Great filter sealing thus less by-pass
- Suits 46mm panel filters



Filters – Holding Frame

Filter Frames

- Stainless Steel – Rust Resistant
- 97mm panels
- M8 retaining bolts (standard)
- Factory poured integral seal
- One frame fits all filter media

Optional

- Stainless Steel Clip
- Specialised Hepa Frames



Molecular Filters

Carbon Filters

- Purafil
- Camcarb

Models

- PK-18, PK-12, VG440

Media

- Range of CAMFIL / PURAFIL media to suit Airports, Museums, Art Galleries, Archival Storage, Commercial Building, etc.
- Proven experience with Hydrogen Sulphide locations i.e. Rotorua



Weather Louvres

TWS “Triple Weather Stop”

- Purpose built for AHU’s
- Proven performance to Class A
- Pressure drop < 100Pa
- 45mm blade spacing x 100mm deep flange frame
- Anodised aluminium
- Independently tested to AMCA 500 standard

Optional

- Large Open Louvre for High Air Volume < 30Pa
- Temperzone XAL-4VF Louvre



Dampers

EL100 Opposed Blade Dampers

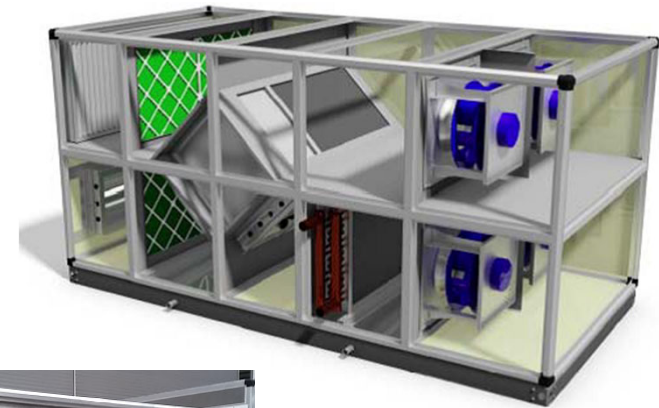
- Manual quadrant
- Motorised with shaft for actuator
- Blade seals
- Heat exchanger face & by-pass dampers
- Temperzone TRD Dampers



Heat Recovery

Air / Air Heat Exchangers

- Imported from “Recuperator” in Italy
- Plate Heat Exchanger, H4 >60% (Sensible only)
- Hygroscopic Heat Wheels, H2 >70% (Sensible & Latent heat transfer)
- Heat Recovery performance to EN13053:2019
- Eurovent performance certification No. 03.01.242
- Importing heat exchangers since 2003



AHU Hardware

CLEVER AHU DOOR HANDLES & HINGES

Lever Handle (Lockable)



Access Panel Blocks



Aluminium Hinge



AHU Hardware

CLEVER AHU ACCESSORIES

External Switches



LED Bulkhead Lights



Differential Filter Gauge



Windows



Fan Controller – EC Motors

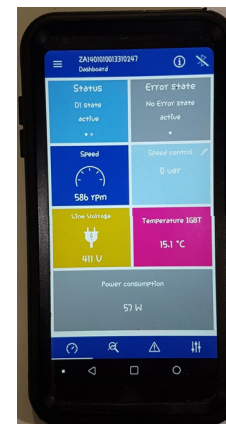
Potentiometer

- External terminal block standard
- Manual speed setting via 0-10 Ohm



ZIEHL-ABEGG MODULES

- CPG-AV Controller – pressure and volume
- CTG-AV Controller – Temperature
- MODBUS Controller
- Bluetooth Mobile App



Clever Quality Features

Door Guards

- Mechanically fixed aluminium mesh door guard



Sloping Drain Trays

- Stainless steel
- 2 way slope to a single point – zero water ponding. [Self draining]



Clever Quality Features

Sloping Roof – Do Not Walk on the Roof

- Centrally pitched for water run off



- Long run “Coloursteel” Roofing – Large AHU’s



Clever Quality Features

Internal Doors

- Inwards opening door against fan pressure



Internal Cabinets

- Accessible cabinets integral part of AHU, digital controllers, etc. Weather proof
- Variable speed drive located in integral cabinet with external access door



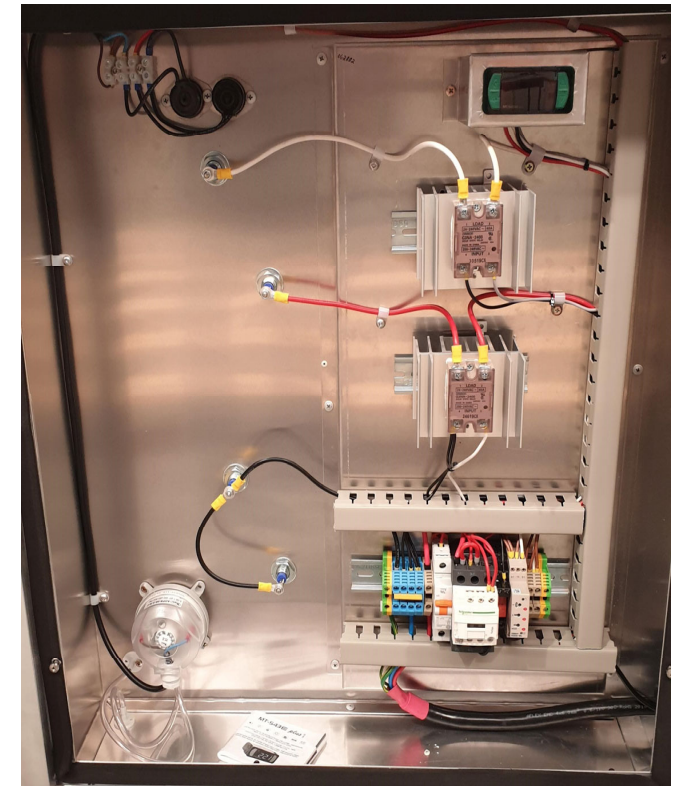
Clever Quality Features

Electric Heating Elements

- 1 or 3 Phase elements in multi-stage arrangement
- Safety devices (auto + manual klaxon reset) and air pressure switch

Wiring and Controls Available

- Digital controller, & S/A Sensor
- Safety Contractor
- Solid State Relays
- Run-on Timer



Clever Quality Features

Packaging

- Full wooden pallet for freight protection



Lifting Facility

- Corner lifting eye's



Clever Quality Features

Kitset Site Assembly

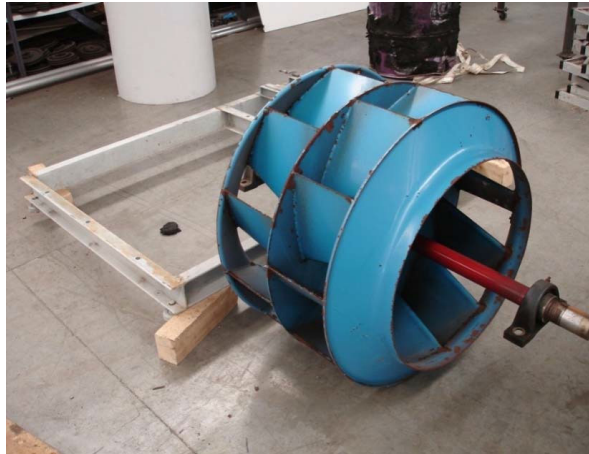
- Partial or complete kitset
- Delivered to site. Contractor man handles parts into plantroom
- Site safe certified
- Installation typically 1 day / AHU
- Temperzone trained Tradesman
- Full Warranty included



AHU Refurbishment - Repair

Existing AHU Replacement / Refurbishment

- Refurbishment of old AHU's, fans
- Un-assemble, clean, repaint, replace parts, etc, new panels
- Upgrade fans DIDW to EC plenum



Documentation

Installation, Operation & Maintenance Manual

- Delivery & handling instructions
- Unloading & lifting suggestions
- Commissioning recommendations
- Wiring diagrams
- Maintenance procedures

Panel Clear Protective Film

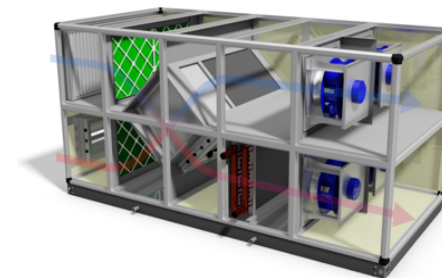
- The external clear protection film on the external panels must be removed within 30 days of delivery

CLEVER A.H.U. Manual

Ver 2019-01

clever
AIR HANDLING

AIR HANDLING UNIT
INSTALLATION, OPERATION &
MAINTENANCE MANUAL



Produced Made in New Zealand by

 **temperzone**
climate innovations

 temperzone
climate innovations

1

Design & After Sales Service

Quick Selection Guide

- Clever “Tick” Sheet
- AHU pre-select for custom built AHU

Serial Numbers

- After sales service
- Detailed list of all Clever AHU's sold from 1996
- Full parts service available

A detailed form for selecting an AHU, including sections for location & construction, panel insulation, components, filters, cooling coil, heating coil, fan section, and condenser fan.

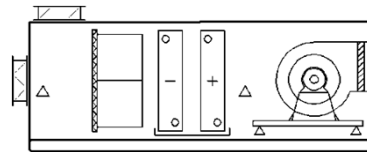
The form includes various checkboxes and input fields for specifying requirements such as panel thickness, insulation, components, filters, and cooling/heating coil options.

AIR HANDLING UNITS - Serial Numbers									
Serial No.	Model	AHU Ref.	Order No.	Contractor/Customer	Project	Location	Final Price	Dispatch	
AUCLE972	MC-100	AHU-11.01	05212	Aquaheat - Christchurch	St Pauls Project	Wellington	\$ 22,431	May-17	
AUCLE973	MC-100	AHU-13.04	05217	Aquaheat - Christchurch	St Pauls Project	Wellington	\$ 32,101	May-17	
AUCLE974	MC-200	AHU-1	05205	Aquaheat - Auckland	FCC Taylor	Auckland	\$ 9,630	Mar-17	
AUCLE975	MC-240	AHU-1	05209	Refrigeration & Mechanical HE Ltd	ARL External Chiller Compartment	Rangiora	\$ 17,640	Mar-17	
AUCLE976	MC-200	SMF-20A	05134	Refrigeration & Mechanical HE Ltd	Analysis Remedial Lab	Auckland	\$ 2,864	Feb-17	
AUCLE977	MC-140	AHU-1	05239	Advanced Building Services	WVCC City Gateway	Wellington	\$ 21,405	Mar-17	
AUCLE978	MC-100	AHU-1	05266	Davis Bioware Contractors Ltd	University of Otago - Temporary Trace Metals Lab	Dunedin	\$ 18,170	Mar-17	
AUCLE979	MC-200	AHU-1	05170	Temperature Solutions Ltd	Aquaheat Corp. Lab	Wellington	\$ 8,550	Apr-17	
AUCLE980	MC-200	AHU-1	05274	Temperzone 2007 Ltd	W.D.H.B. Negative Pressure Room	Hamilton	\$ 3,620	Mar-17	
AUCLE981	MC-240	AHU-11	05270	Air Rec Comm Ltd	General Warehouse	Auckland	\$ 18,400	Mar-17	
AUCLE982	MC-100	AHU-1 S/A	05270	NCS Acoustics Ltd	Henderson Compressor Station	Auckland	\$ 13,100	Apr-17	
AUCLE983	MC-200	AHU-2 S/A	05270	NCS Acoustics Ltd	Henderson Compressor Station	Auckland	\$ 6,050	Apr-17	
AUCLE984	MC-200	AHU-1	05145	Air Rec Comm Ltd	Tairāneke Presbyterian Church	Auckland	\$ 14,330	Apr-17	
AUCLE985	MC-1000	AHU-1	05197	Chiller Services Ltd	St Lukes Shopping Centre - HVAC AHU Upgrades	Auckland	\$ 103,010	Jun-17	
AUCLE986	MC-200	AHU-2	05197	Chiller Services Ltd	St Lukes Shopping Centre - HVAC AHU Upgrades	Auckland	\$ 68,010	Jun-17	
AUCLE987	MC-1000	AHU-4	05197	Chiller Services Ltd	St Lukes Shopping Centre - HVAC AHU Upgrades	Auckland	\$ 61,990	Jun-17	
AUCLE988	MC-200	AHU-5	05197	Chiller Services Ltd	St Lukes Shopping Centre - HVAC AHU Upgrades	Auckland	\$ 65,900	Jun-17	
AUCLE989	MC-300	AHU-9	05197	Chiller Services Ltd	St Lukes Shopping Centre - HVAC AHU Upgrades	Auckland	\$ 66,820	Jun-17	
AUCLE990	MC-300	AHU-10	05197	Chiller Services Ltd	St Lukes Shopping Centre - HVAC AHU Upgrades	Auckland	\$ 66,960	Jun-17	
AUCLE991	MC-240	AHU-1	05270	Airon Services Ltd	Pukekohe Wastewater Pump Station	Auckland	\$ 18,320	Apr-17	
AUCLE992	MC-200	AHU-2	05270	Tago Mechanical Services	HiPoint DCU	Hamilton	\$ 8,140	Apr-17	
AUCLE993	MC-100	AHU-11 - AHU-19/40-10	05216	Economesh Services Ltd	Auckland International Airport - Pier B Extension	Auckland	\$ 82,834	Jun-17	
AUCLE994	MC-200	AHU-2 - AHU-19/40-11	05216	Economesh Services Ltd	Auckland International Airport - Pier B Extension	Auckland	\$ 22,452	Jun-17	
AUCLE995	MC-100	AHU-3 - AHU-19/40-12	05216	Economesh Services Ltd	Auckland International Airport - Pier B Extension	Auckland	\$ 26,128	Jun-17	
AUCLE996	MC-200	AHU-4 - AHU-19/40-13	05216	Economesh Services Ltd	Auckland International Airport - Pier B Extension	Auckland	\$ 15,648	Jun-17	
AUCLE997	MC-100	AHU-5 - AHU-19/40-14	05216	Economesh Services Ltd	Auckland International Airport - Pier B Extension	Auckland	\$ 28,824	Jun-17	
AUCLE998	MC-200	AHU-6 - AHU-19/40-15	05216	Economesh Services Ltd	Auckland International Airport - Pier B Extension	Auckland	\$ 28,066	Jun-17	
AUCLE999	MC-100	AHU-7 - AHU-19/40-16	05216	Economesh Services Ltd	Auckland International Airport - Pier B Extension	Auckland	\$ 26,346	Jun-17	
AUCLE1000	MC-240	AHU-8 - AHU-19/40-17	05216	Economesh Services Ltd	Auckland International Airport - Pier B Extension	Auckland	\$ 19,048	Jun-17	
AUCLE1001	MC-100	AHU-13 - AHU-19/40-20	05216	Economesh Services Ltd	Auckland International Airport - Pier B Extension	Auckland	\$ 49,307	Jun-17	
AUCLE1002	MC-100	AHU-14 - AHU-19/40-23	05216	Economesh Services Ltd	Auckland International Airport - Pier B Extension	Auckland	\$ 28,426	Jun-17	
AUCLE1003	MC-100	AHU-1	05259	Economesh Services Ltd	Telecommunications Container Ventilation - Stage 1	Porirua	\$ 31,010	May-17	
AUCLE1004	MC-240	AHU-1A	05276	Airon Control Ltd	Ed Alison Street Operating Theatres	Hamilton	\$ 8,640	Apr-17	
AUCLE1005	MC-200	AHU-18	05259	Airon Control Ltd	Ed Alison Street Operating Theatres	Hamilton	\$ 8,640	Apr-17	
AUCLE1006	MC-203	AHU-1	05211	Justice Building Services	Forterra Dry Food Storage Stage 2	Palmerston North	\$ 10,840	Apr-17	
AUCLE1007	MC-200	AHU-1	05217	Alres Services & Systems Ltd	Alres Dry Food Storage Stage 2	Christchurch	\$ 6,540	Mar-17	
AUCLE1008	MC-200	AHU-1	05265	All Seasons Air Conditioning	Stemming's Car Wash/Detail 'Retley'	Hamilton	\$ 4,960	Mar-17	
AUCLE1009	MC-203	AHU-1	05276	Medicare Group Ltd	Tirirau Medical	Tirirau	\$ 3,540	Apr-17	
AUCLE1010	MC-200	AHU-1	05276	Medicare Group Ltd	Tirirau Medical	Tirirau	\$ 3,540	Apr-17	
AUCLE1011	SB015	FCU-7	05120 B	Modem	57 Willis Street	Wellington	\$ 2,300	Apr-17	
AUCLE1012	SB015	FCU-8	05120 B	Modem	57 Willis Street	Wellington	\$ 2,340	Apr-17	
AUCLE1013	SB015	FCU-9	05120 B	Modem	57 Willis Street	Wellington	\$ 2,300	Apr-17	

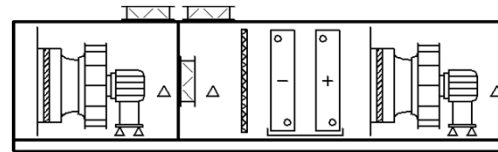
AHU Customisation – Clever MC

AHU Specialist

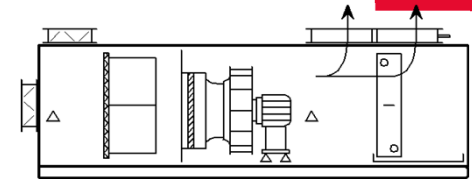
- Any size,
- Any shape
- Any features
- JUST ASK!



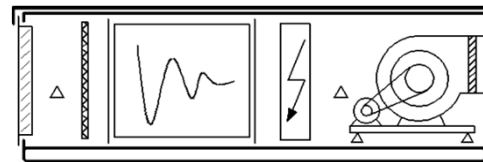
Standard DIDW



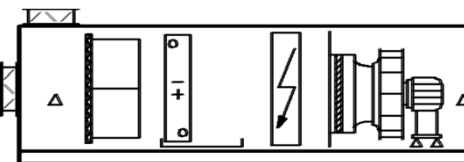
RAF & SAF PLENUM



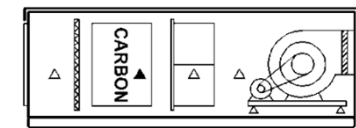
Multi-Zone



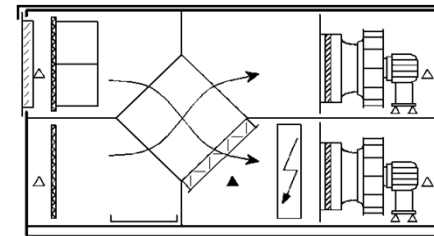
TWS Louvre & Roof



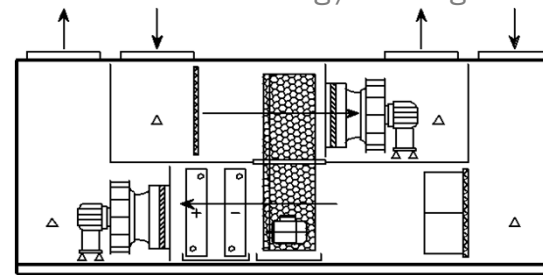
DX cooling / Heating



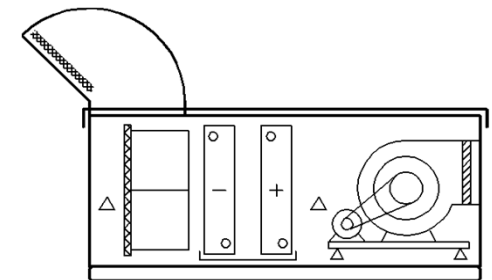
Carbon Filters



Heat Recovery



Heat Recovery



External C/ Cowl

Clever AHU - Examples

Fonterra Waitoa

- Gooseneck Cowl



Mercedes Cafe

- Melbourne, DX AHU



Clever AHU - Examples

Toll New Offices – Auckland (MC460, 9050 l/s)

- Wheel heat exchanger
- DX coils
- Epoxy coating
- EC fans – pool spec



Clever AHU - Examples

Whakatane Hospital

- Multi-zone



Spark

- Data Centre Auckland



Clever AHU - Examples

Data Centre

- Hamilton



Albany Swimming Pool

- Epoxy coated



Clever AHU - Examples

St Luke's Shopping Centre

- Replacement AHU's
- Internal LTHW boiler
- Helicopter delivery



Clever AHU - Examples

Cambridge Swimming Pool (MXR360, 10,000 l/s)

- Plate heat exchanger
- Epoxy coating
- EC Fans – pool spec



Clever AHU - Examples

Westland Milk Products

Full Stainless Steel AHU

- S/S panels & fixings
- DX coil



Clever AHU's – NZ Made & Sourced



HITACHI



FILTERS DIRECT

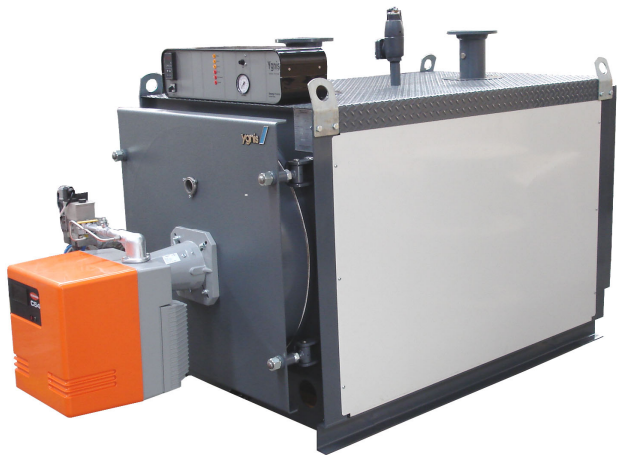


NICOTRA | Gebhardt



Temperzone Hamilton – Other Product

Steel Boiler



aquatherm
BOILERS

aquatherm
MODULAR FLUES

Condensing Boiler



De Dietrich 

Temperzone Hamilton – Other Product

Condensing Boilers



Wall Mount



Floor



Boiler Packages



Temperzone Hamilton – Other Product

Buffer Tanks



aquatherm
STORAGE TANKS

Expansion Tanks
Valves



IMI PNEUMATEX



IMI HEIMEIER

 **temperzone**
climate innovations

Temperzone Hamilton – Other Product

Econorad Radiators

aquatherm
ECONORAD RADIATORS



Temperzone Hamilton – Other Product

Flexalen

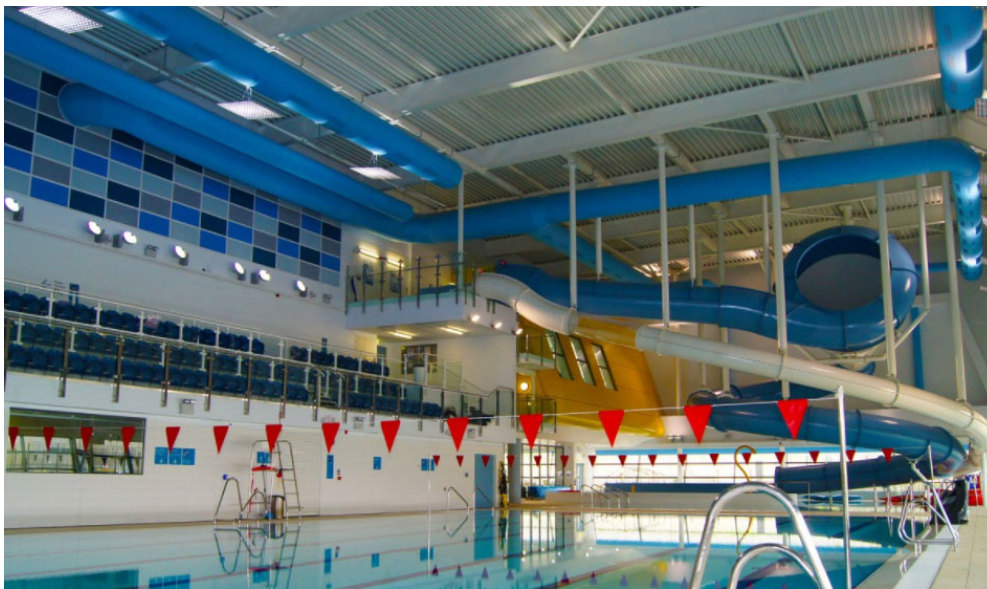


Schwank



Temperzone Hamilton – Other Product

FabricAir Ducting



Wilo Pumps





Thank You.

