

Model	OPA 250RLTFPQ-DZ-S4
Configuration	Horizontal Supply Air + Economiser + Viking
Item No. (Standard / Opposite Hand)	877-025-701-002 / 877-025-710-002
Configuration	Downward Supply Air + Economiser + Viking
Item No. (Standard / Opposite Hand)	877-025-723-002 / 877-025-732-002
Cooling capacity (net) <sup>1</sup>	24.6 kW
Cooling capacity range (gross)	10.1 ~ 29.1 kW
Heating capacity <sup>1</sup>	26.9 kW
Heating capacity range	6.5 ~ 29.3 kW
Electrical input - cooling	7.7 kW
Electrical input - heating	8.1 kW
EER / AEER (cooling) <sup>1</sup>	3.20 / 3.18
COP / ACOP (heating) <sup>1</sup>	3.33 / 3.31
Unit Controller	UC8
Refrigerant	R32
Refrigerant Charge	8.0 kg
Minimum floor area (@2.4m below ceiling diffuser)	34.0 m <sup>2</sup>
Compressor oil type	POE-46 (NXG5020 or equivalent)
Compressor type	inverter scroll
Power supply <sup>2</sup>	3 ph. 400 V ac 50 Hz + N + E
Compressor (3ph.) run amps <sup>1</sup>	9.5 A/ph
Compressor + VSD circuit breaker	40 A
Indoor fan motor size	EC plug 450 dia. 3.94kW
Nominal air flow at rating conditions	1250 l/s
Indoor fan motor (3ph.) - full load	6 A/ph.
Outdoor fan motor (3ph.) - full load	4.6 A/ph.
Outdoor fan capacitor size	n/a
Outdoor fan max. static pressure@ 3000 l/s	125 Pa
Control circuit breaker (internal)	2 A
Auxiliary power outlet (1ph.) overload setting	10 A
Running amps (total system) <sup>1</sup>	12.5 / 11.5 / 13 A
Max. running amps (total system)	24 A/ph.
RCD type recommended	type B, 30mA, 3 pole
Net weight c/w Economiser	556 kg
Shipping weight c/w Economiser	612 kg

## Accessories:

Filters - rated EU4/G4 disposable	019-400-005 600x500x50 (x2) <sup>3</sup>
Filters - rated EU4/G4 washable	019-000-034 600x500x50 (x2) <sup>3</sup>
Drain tundish (set of 2)	060-000-653

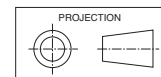
## Viking Controls:

SMT-920 Controller + RS-SS Outdoor Air Sensor	supplied
RS-SSD Room temperature controller	supplied

Refer to temperzone for other options.

<sup>1</sup> Tested in accordance with AS/NZS 3823<sup>2</sup> Voltage range: 376–440V<sup>3</sup> Filter sizes are nominal; refer to Temperzone for actual measurements.

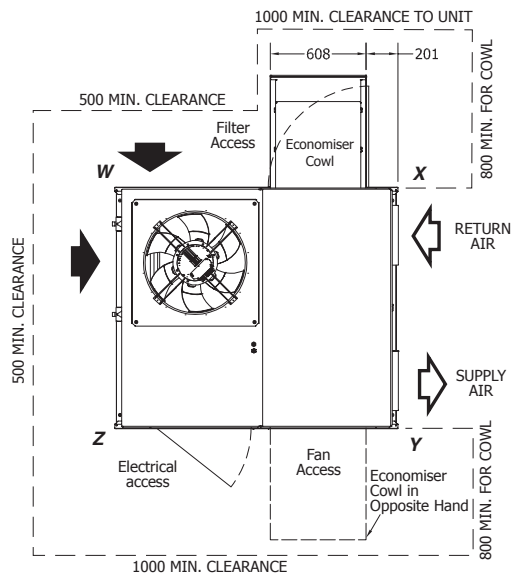
# DIMENSIONS (mm)



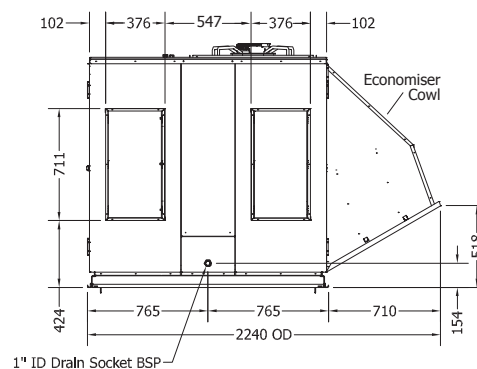
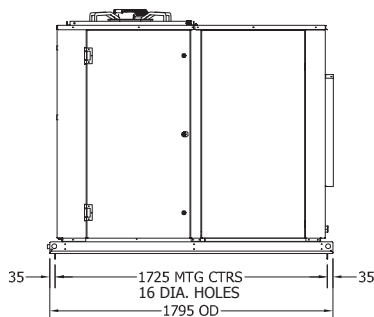
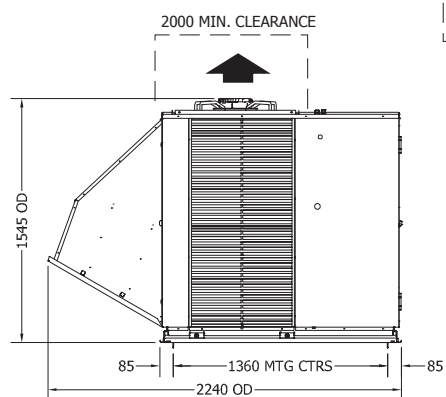
## OPA 250RLTFP01-DZ-S4 Standard Hand, Horizontal Supply

Not to Scale

	POINT LOADS (kg)			
	W	X	Y	Z
Std Hd cw Ec	109	173	109	163
Op Hd cw Ec	109	109	173	163

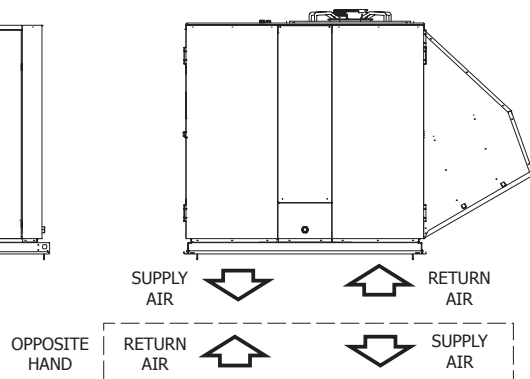
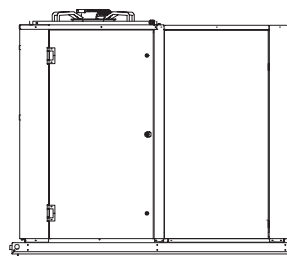
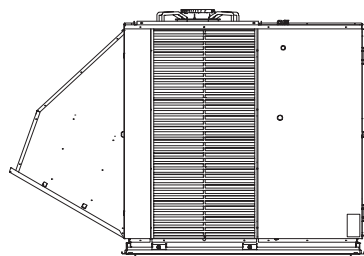
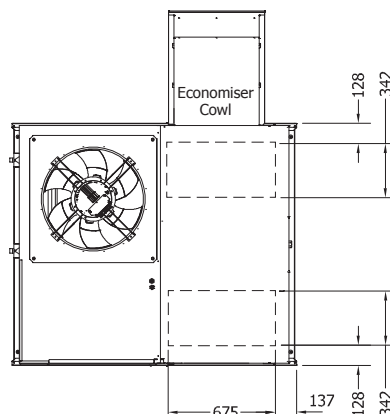


Multiple units side-by-side:  
Allow a minimum of 1m  
between coil faces.



## OPA 250RLTFP23-DZ-S4 Standard Hand, Downward Supply

Clearances as above

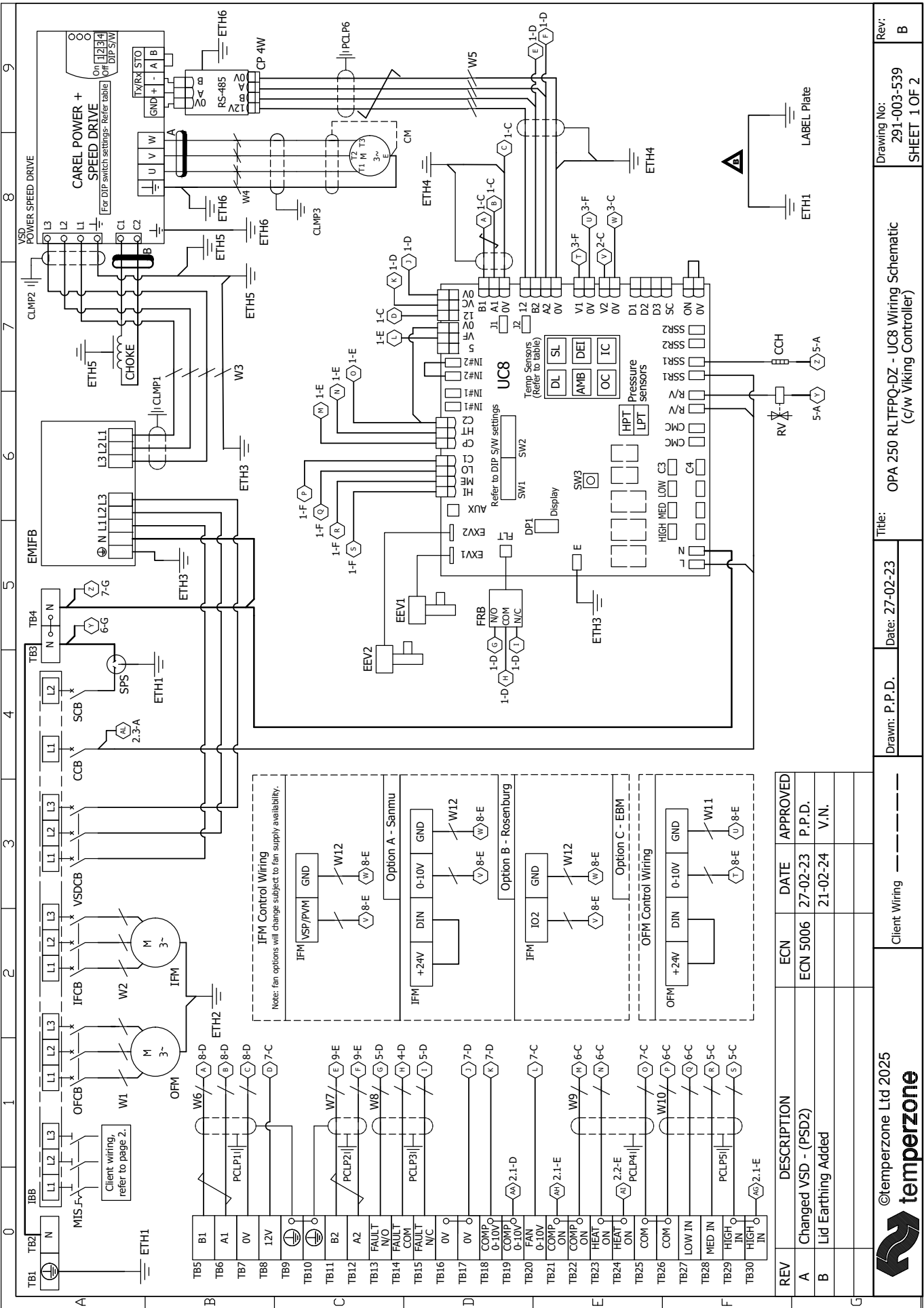


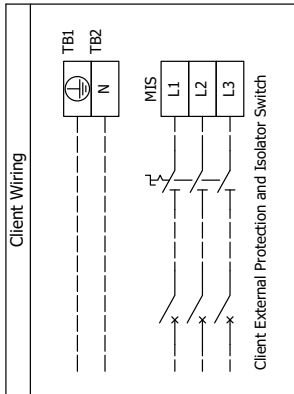
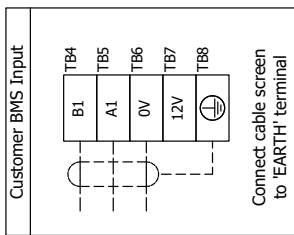
### NOTE

Specifications are subject to change without notice due to the manufacturer's ongoing research and development programme.

## WIRING

For client wiring and descriptors, refer to Sheet 2.





24VCB	24 Volt Circuit Breaker
CCB	Control Circuit Breaker
CCH	Crankcase Heater
CM	Compressor Motor
DMF	Damper Motor Fresh Air
DMR	Damper Motor Return Air
EEV	Electronic Expansion Valve
EMIFB	EMI Filter Board
ETH	Earth
FRB	Fault Relay Board
IFCB	Indoor Fan Circuit Breaker
IFM	Indoor Fan Motor
IBB	Insulated Bus Bar
MIS	Main Isolator Switch
OFCB	Outdoor Fan Circuit Breaker
OFM	Outdoor Fan Motor
PCLP	P Clip
RV	Reversing Valve
SCB	Socket Circuit Breaker
SPS	Single Phase Socket
TB	Terminal Block
TR	Transformer
UC8	Unit Controller 8
VSD	Variable Speed Drive
VSDCB	Variable Speed Drive Circuit Breaker
W	Cable Marker

Sensors (S) / Transducers (T)			
	Name	Type	Colour
DL	Discharge Temp	S	GREY
SL	Suction Temp	S	WHITE
AMB	Ambient Temp	S	YELLOW
DEI	De-ice Temp	S	BLUE
IC	De-ice Temp	S	BLUE
LPT	Suction Pressure	T	
HPT	Hub Pressure	T	

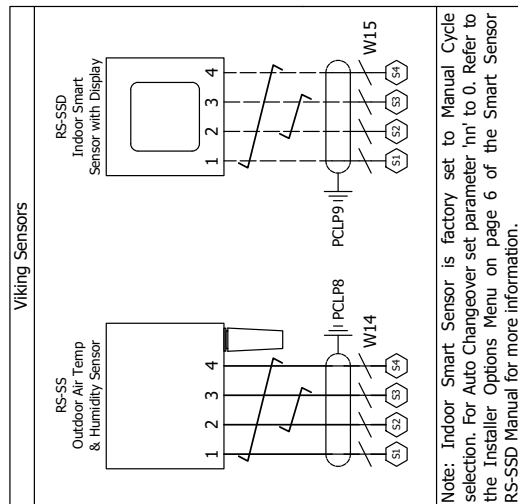
Important Note:

Unit requires 24 hour power supply for control circuit and crankcase heaters.

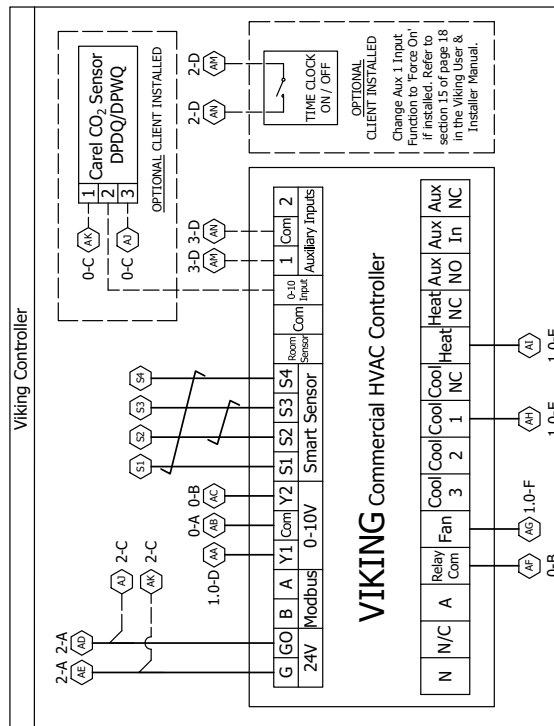
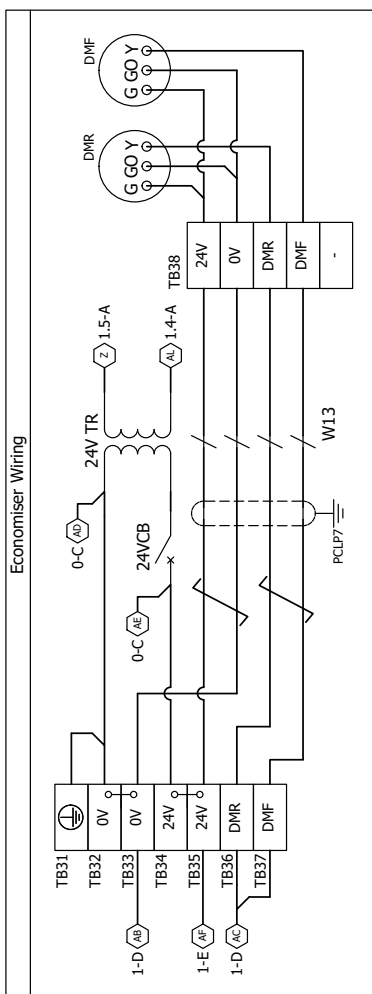
UC8 DIP Switch Settings	
DIP Switch	On/Off
2, 4, 6, 7, 10, 14	On
All Others Off	Off

PSD DIP Switch Settings	
DIP Switch	On/Off
1, 4	On
2, 3	Off



Ferrites			
	Part Number	Frequency Type	Number of Turns
A	012-001-074	High	1
B	012-001-094	Low	1



Viking DIP switch settings	
	DIP switch
DPDQ402000	1,2,4
DPWQ402000	1,2,4,5
RS-SSD	1,2,3,4
SMT-070	1,2

REV	DESCRIPTION	ECN	DATE	APPROVED
A	Changed VSD - (PSD2)	ECN 5006	27-02-23	P.P.D.
B	Lid Earthing Added		21-02-24	V.N.

©temperzone Ltd 2025



## Client Wiring

Title:

Drawn: P.P.D.	Date: 27-02-23
---------------	----------------

RLTFPQ-DZ - UC8 Wiring Schematic  
(c/w Viking Controller)

Drawing No:	Rev:
-------------	------