

SPECIFICATIONS



| | | |
|---|--|------------------------------|
| Air Handling Unit | (345-030-XYZ / 345-035-000) ¹ | MT 030 |
| Nominal Air Volume ² | | 750 l/s |
| Nominal Cooling Capacity ³ | 4 row | 15.0 kW |
| | 6 row | 19.2 kW |
| | 8 row | 22.0 kW |
| Nominal Heating Capacity ⁴ | 1 row | 18.0 kW |
| | 2 row | 31.7 kW |
| Fan type | | EC plug (x1) |
| Fan motor size (3ph.) | | 1300 W / 355 mm dia. |
| Unit Max. running amps | | 2.1 A /ph. |
| Protection Rating | | IP4X |
| Power supply ⁵ | | 3 ph. 400 V ac 50 Hz + N + E |
| RCD type recommended | | type A, 30 mA, 3 pole |
| Net weight – fan coil section | | 141 – 165 kg ⁶ |
| Net weight – plenum section – bare | | 87 kg |
| Net weight – plenum section – damper mix | | 95 kg |
| Shipping weight – fan coil section | | 166 – 190 kg ⁶ |
| Shipping weight – plenum section – bare | | 111 kg |
| Shipping weight – plenum section – damper mix | | 120 kg |

Accessories:

| | |
|----------------------------------|-----------------------------|
| Filter - rated EU4/G4 disposable | 019-000-158 594 x 594 x 44 |
| Filter - rated EU4/G4 washable | 019-400-140 594 x 594 x 46 |
| Filter - rated F7 bag type | 019-400-153 592 x 592 x 600 |
| Filter - rated F9 cartridge type | 019-400-160 592 x 592 x 292 |

Optional:

| | |
|-------------------------|---------------|
| Chilled water coil 1/2" | 4 / 6 / 8 row |
| Hot water coil 1/2" | 1 / 2 row |

Refer to temperzone for other options, eg remote sensors

¹ X = cooling coil rows, Y = heating coil rows and Z = handing. (Fan Coil Section / Plenum Section {bare})

² Based on 2.5 m/s coil face velocity

³ Cooling at nominal air flow, EAT 27 °C db / 19 °C wb, EWT 6°C, LWT 13°C.

⁴ Heating at nominal air flow, EAT 15 °C, EWT 80°C, LWT 60°C.

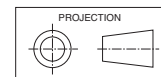
⁵ Voltage range: 380–440V

⁶ Depending on coil configuration; refer table below.

| MT030 AHU | |
|-------------|-------------|
| COIL CONFIG | WEIGHT (kg) |
| 4C 1H | 150 |
| 6C 1H | 162 |
| 4C 2H | 153 |
| 6C 2H | 165 |
| 4C 0H | 141 |
| 6C 0H | 153 |

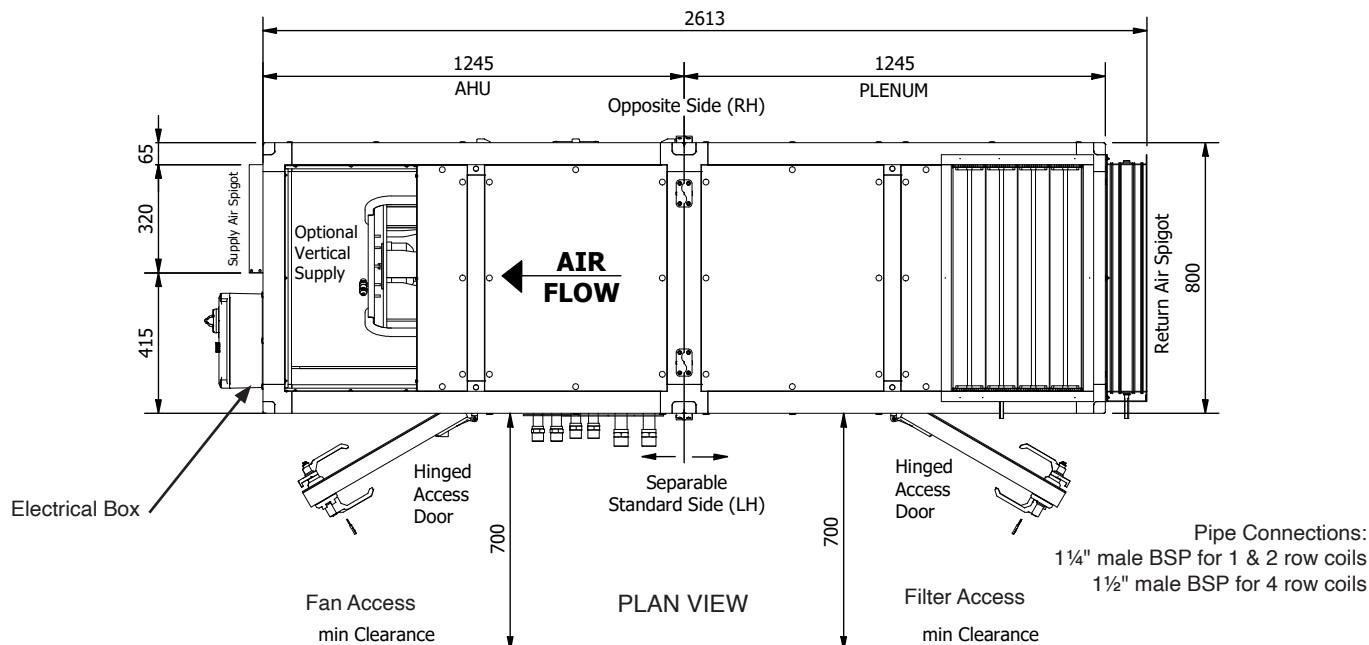
| MT030 PLENUM | |
|-----------------|-------------|
| CONFIGURATION | WEIGHT (kg) |
| HORIZONTAL BARE | 86 |
| VERTICAL BARE | 87 |
| DAMPER MIX | 95 |

Note: Weights (net) are approximate

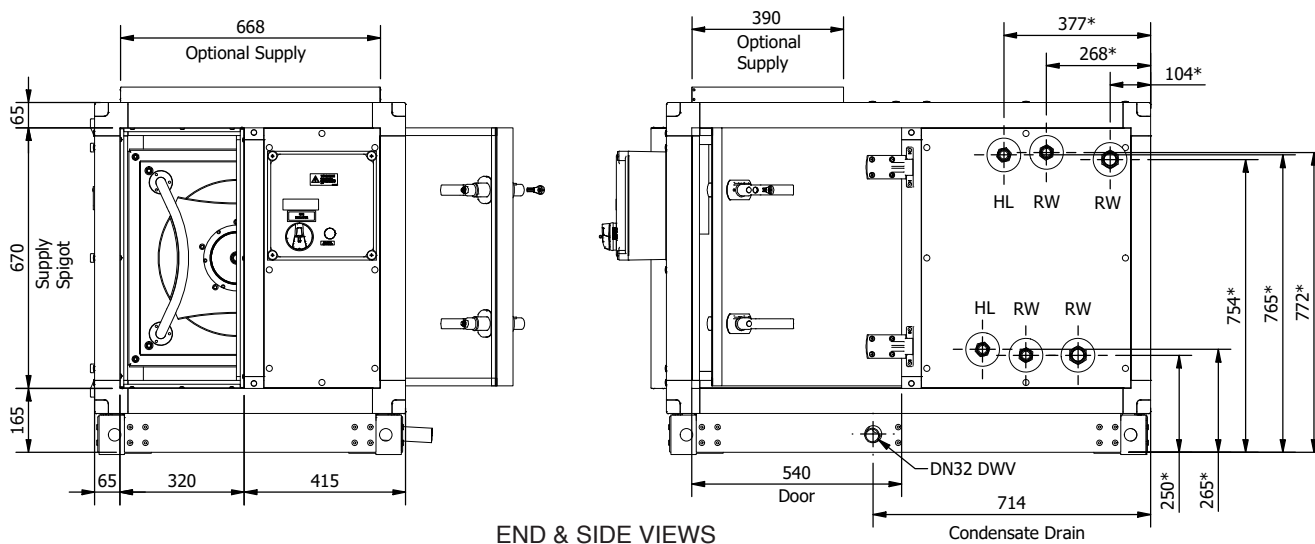


MT 030 Complete Air Handling Unit

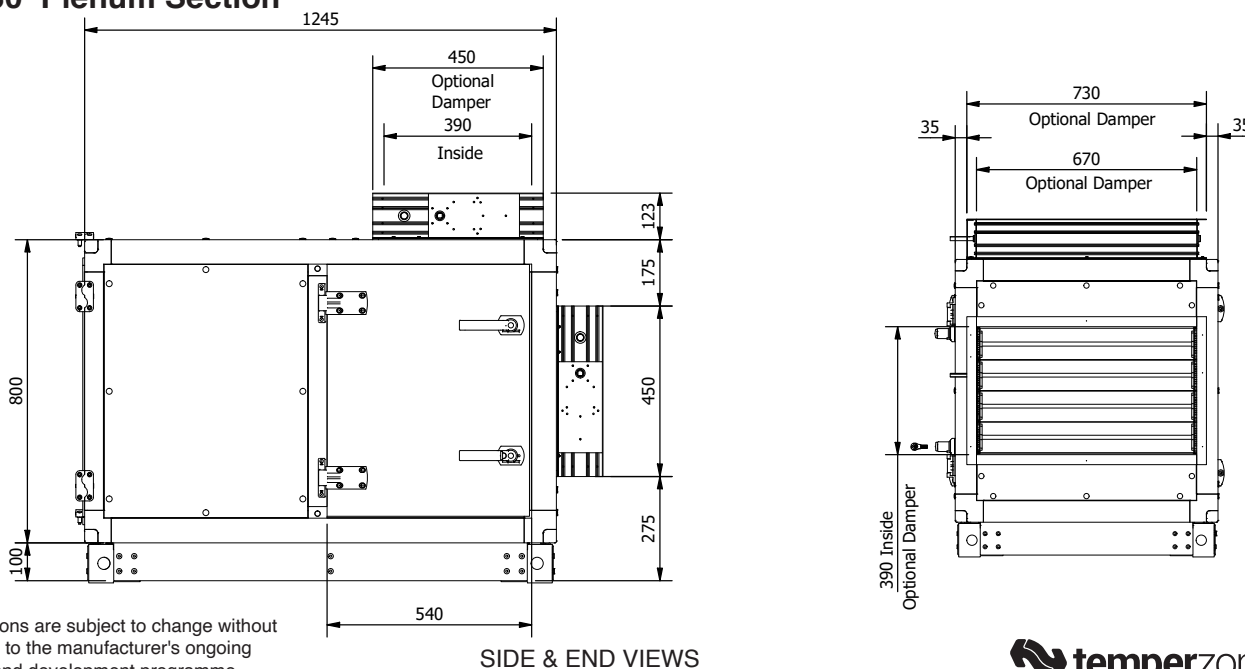
Not to Scale



MT 030 Fan Coil Section

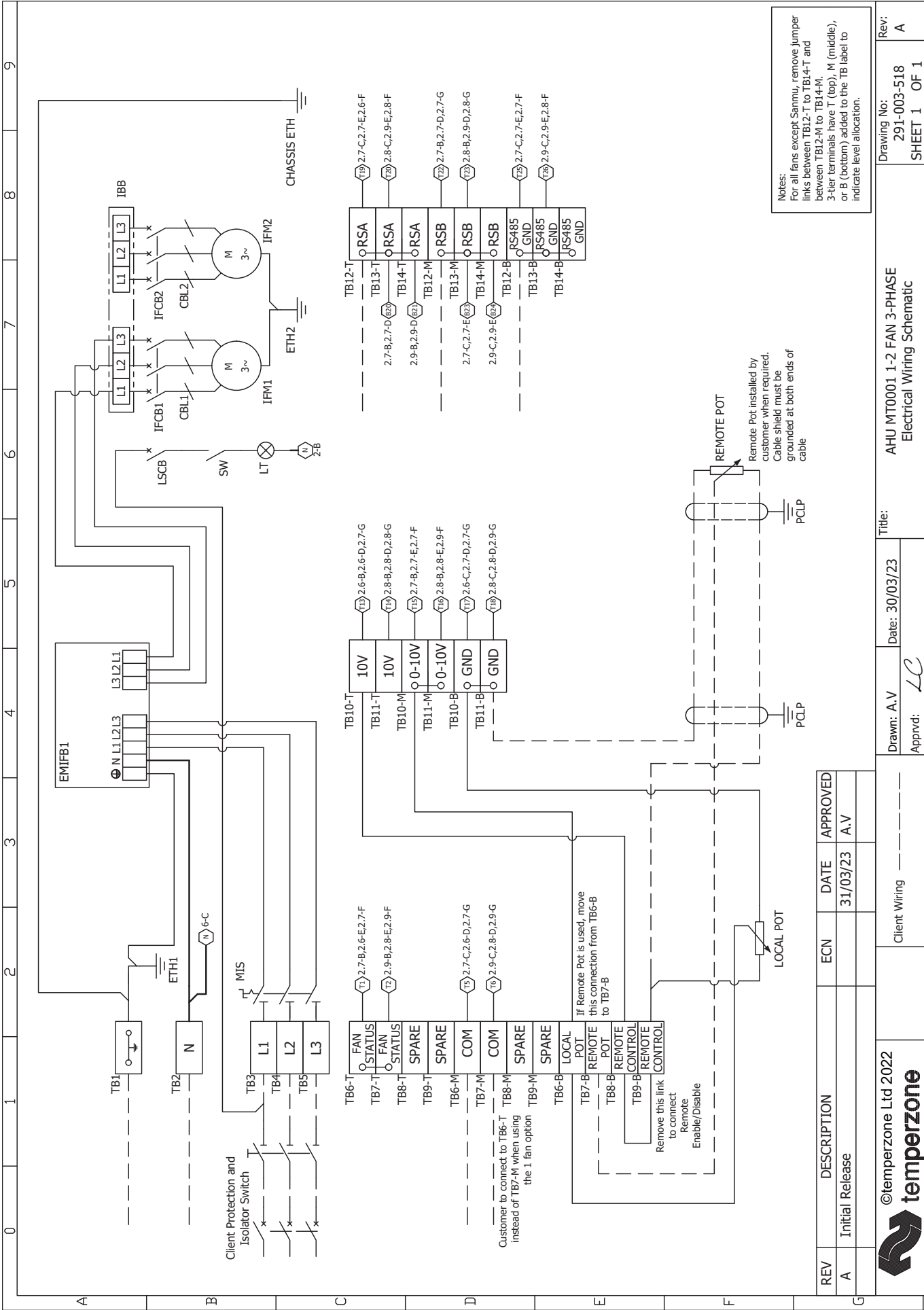


MT 030 Plenum Section



NOTE

Specifications are subject to change without notice due to the manufacturer's ongoing research and development programme.



CBL

CABLE

EMIFB

MAINS EMI FILTER BOARD

ETH

EARTH STUD

IBB

INTERCONNECTING BUSBAR

IFCB

INDOOR FAN CIRCUIT BREAKER

IFM

INDOOR FAN MOTOR

LSCB

LIGHT SWITCH CIRCUIT BREAKER

LT

CLASS II LIGHT FITTING

MIS

MAIN ISOLATION SWITCH

PCLP

SHIELD GROUNDING CLIP

POT

POTENTIOMETER

SW

SWITCH

TB

TERMINAL BLOCK

1

2

3

4

5

6

7

8

9

IFM OPTIONS

Note: Fan options will change subject to fan supply availability

IFM1

24V D1 10V GND E1 A B GND A B NC C

RED

GREEN

BLUE

WHITE

BROWN

YELLOW

GREY

PINK

CBL1A

CBL1

CBL2A

CBL2

T19

T17

T15

T13

T11

T9

T7

T5

1.5C

1.5D

1.8C

1.8D

1.7C

1.7D

1.2C

1.2D

IFM2

24V D1 10V GND E1 A B GND A B NC C

RED

GREEN

BLUE

WHITE

BROWN

YELLOW

GREY

PINK

CBL1A

CBL1

CBL2A

CBL2

T19

T17

T15

T13

T11

T9

T7

T5

1.5C

1.5D

1.8C

1.8D

1.7C

1.7D

1.2C

1.2D

OPTION A - Ziehl Abegg

IFM1

NC 24V D1 10V GND E1 A B GND A B

RED

GREEN

BLUE

WHITE

BROWN

YELLOW

GREY

PINK

CBL1A

CBL1

CBL2A

CBL2

T19

T17

T15

T13

T11

T9

T7

T5

1.5C

1.5D

1.8C

1.8D

1.7C

1.7D

1.2C

1.2D

IFM2

NC 24V D1 10V GND E1 A B GND A B

RED

GREEN

BLUE

WHITE

BROWN

YELLOW

GREY

PINK

CBL1A

CBL1

CBL2A

CBL2

T19

T17

T15

T13

T11

T9

T7

T5

1.5C

1.5D

1.8C

1.8D

1.7C

1.7D

1.2C

1.2D

OPTION B - Rosenberg

IFM1

485A 485B GND 10V VSP GND NC COM

BROWN

BLACK

GREEN

RED

YELLOW

BLUE

RED

GRAY

CBL1A

CBL1

CBL2A

CBL2

T19

T17

T15

T13

T11

T9

T7

T5

1.8C

1.8D

1.5C

1.5D

1.2C

1.2D

IFM2

485A 485B GND 10V VSP GND NC COM

BROWN

BLACK

GREEN

RED

YELLOW

BLUE

RED

GRAY

CBL1A

CBL1

CBL2A

CBL2

T19

T17

T15

T13

T11

T9

T7

T5

1.8C

1.8D

1.5C

1.5D

1.2C

1.2D

REV

DESCRIPTION

ECN

DATE

APPROVED

A

Initial Release

31/03/23

A.V

temperzone

©temperzone Ltd 2022

Client Wiring

Drawn: A.V

Date: 30/03/23

Approved: LC

Title:

AHU MT0001 1-2 FAN 3-PHASE Electrical Wiring Schematic

Rev:

291-003-518

SHEET 2 OF 2

Rev:

A