

SPECIFICATIONS



Air Handling Unit	(345-120-XYZ / 345-125-000) ¹	MT 120
Nominal Air Volume ²		3 000 l/s
Nominal Cooling Capacity ³	4 row	66.6 kW
	6 row	82.7 kW
	8 row	93.5 kW
Nominal Heating Capacity ⁴	1 row	79.9 kW
	2 row	133 kW
Fan type		EC plug (x1)
Fan motor size (3ph.)		2800 W / 500 mm dia.
Unit Max. running amps		4.4 A /ph.
Protection Rating		IP4X
Power supply ⁵		3 ph. 400 V ac 50 Hz + N + E
RCD type recommended		type A, 30 mA, 3 pole
Net weight – fan coil section		334 – 416 kg ⁶
Net weight – plenum section – bare		157 kg
Net weight – plenum section – damper mix		176 kg
Shipping weight – fan coil section		394 – 476 kg ⁶
Shipping weight – plenum section – bare		199 kg
Shipping weight – plenum section – damper mix		218 kg

Accessories:

Filter - rated EU4/G4 disposable	019-000-158 594 x 594 x 44 (x4)
Filter - rated EU4/G4 washable	019-400-140 594 x 594 x 46 (x4)
Filter - rated F7 bag type	019-400-153 592 x 592 x 600 (x4)
Filter - rated F9 cartridge type	019-400-160 592 x 592 x 292 (x4)

Optional:

Chilled water coil 1/2"	4 / 6 / 8 row
Hot water coil 1/2"	1 / 2 row

Refer to temperzone for other options, eg remote sensors

¹ X = cooling coil rows, Y = heating coil rows and Z = handing. (Fan Coil Section / Plenum Section {bare})

² Based on 2.5 m/s coil face velocity

³ Cooling at nominal air flow, EAT 27 °C db / 19 °C wb, EWT 6°C, LWT 13°C.

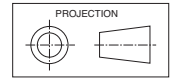
⁴ Heating at nominal air flow, EAT 15 °C, EWT 80°C, LWT 60°C.

⁵ Voltage range: 380–440V

⁶ Depending on coil configuration; refer table below

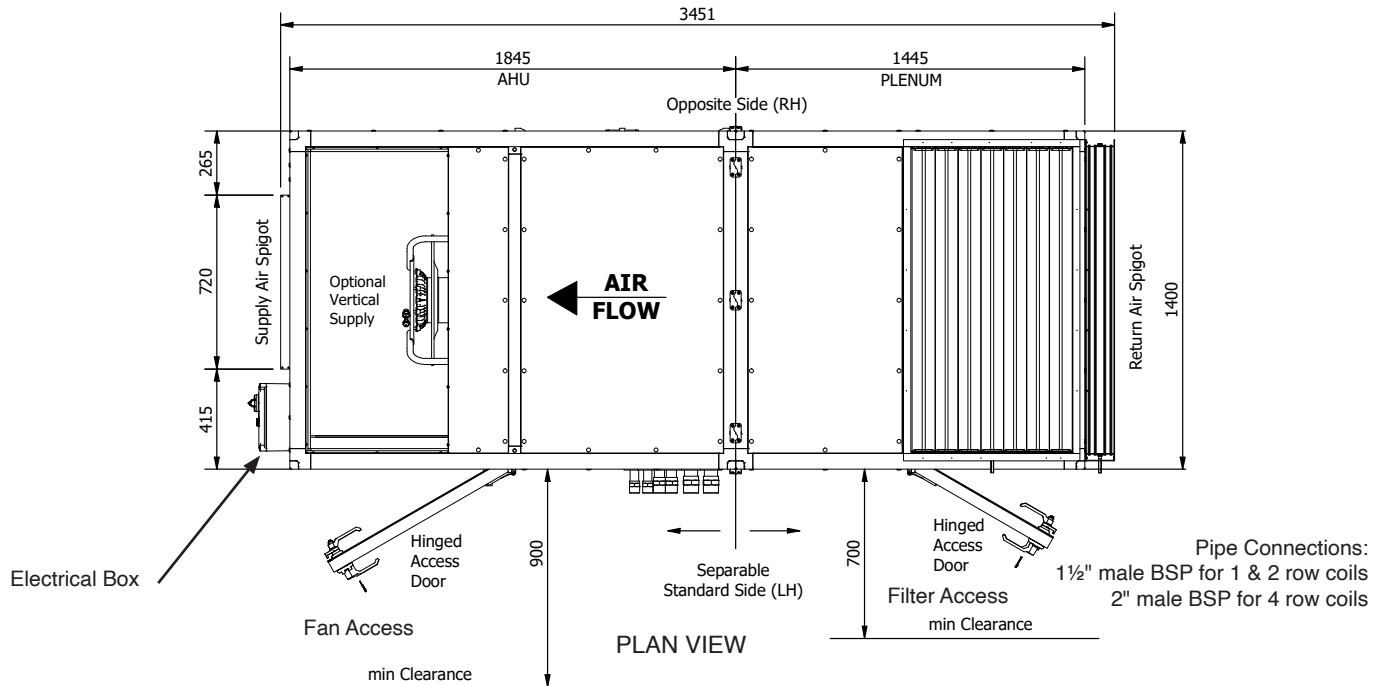
MT120 AHU		CONFIGURATION	WEIGHT (kg)
COIL CONFIG	WEIGHT (kg)	HORIZONTAL BARE	157
4C 1H	359	VERTICAL BARE	168
6C 1H	400	DAMPER MIX	176
4C 2H	375		
6C 2H	416		
4C 0H	335		
6C 0H	375		

Note: Weights (net) are approximate

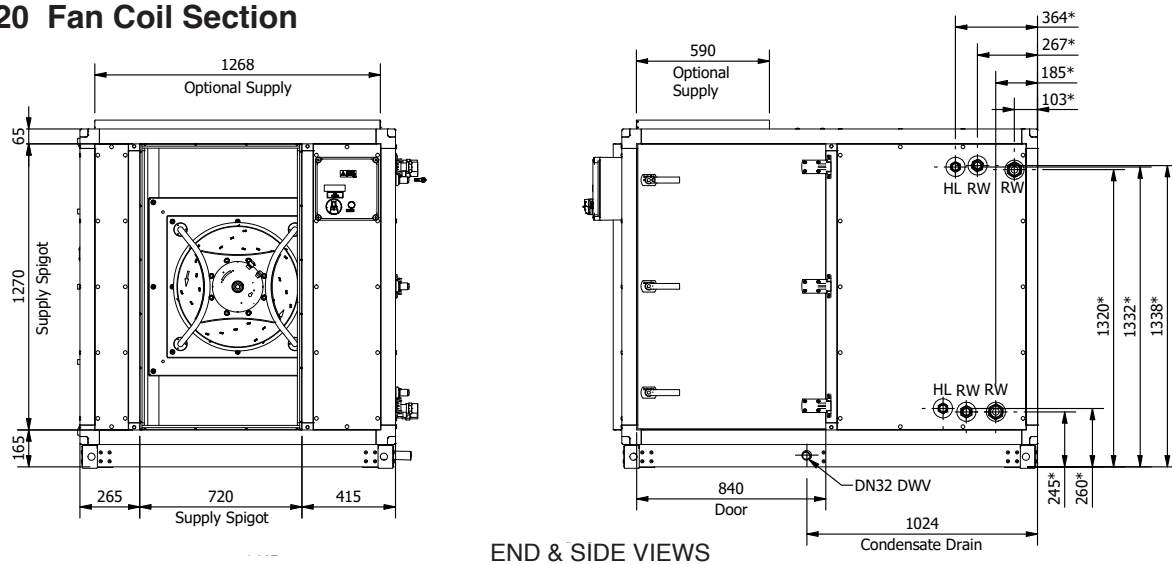


MT 120 Complete Air Handling Unit

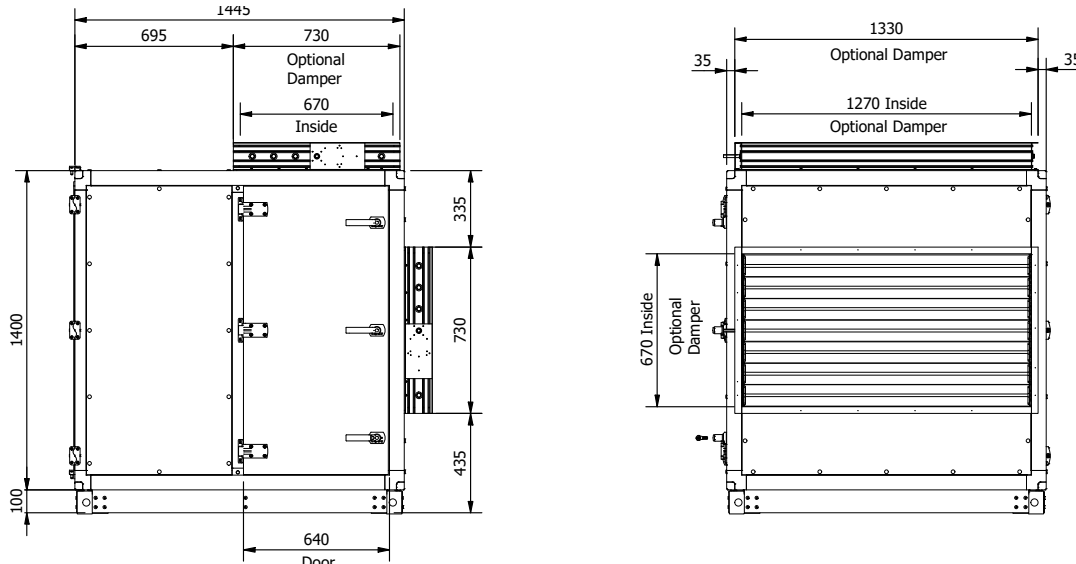
Not to Scale



MT 120 Fan Coil Section



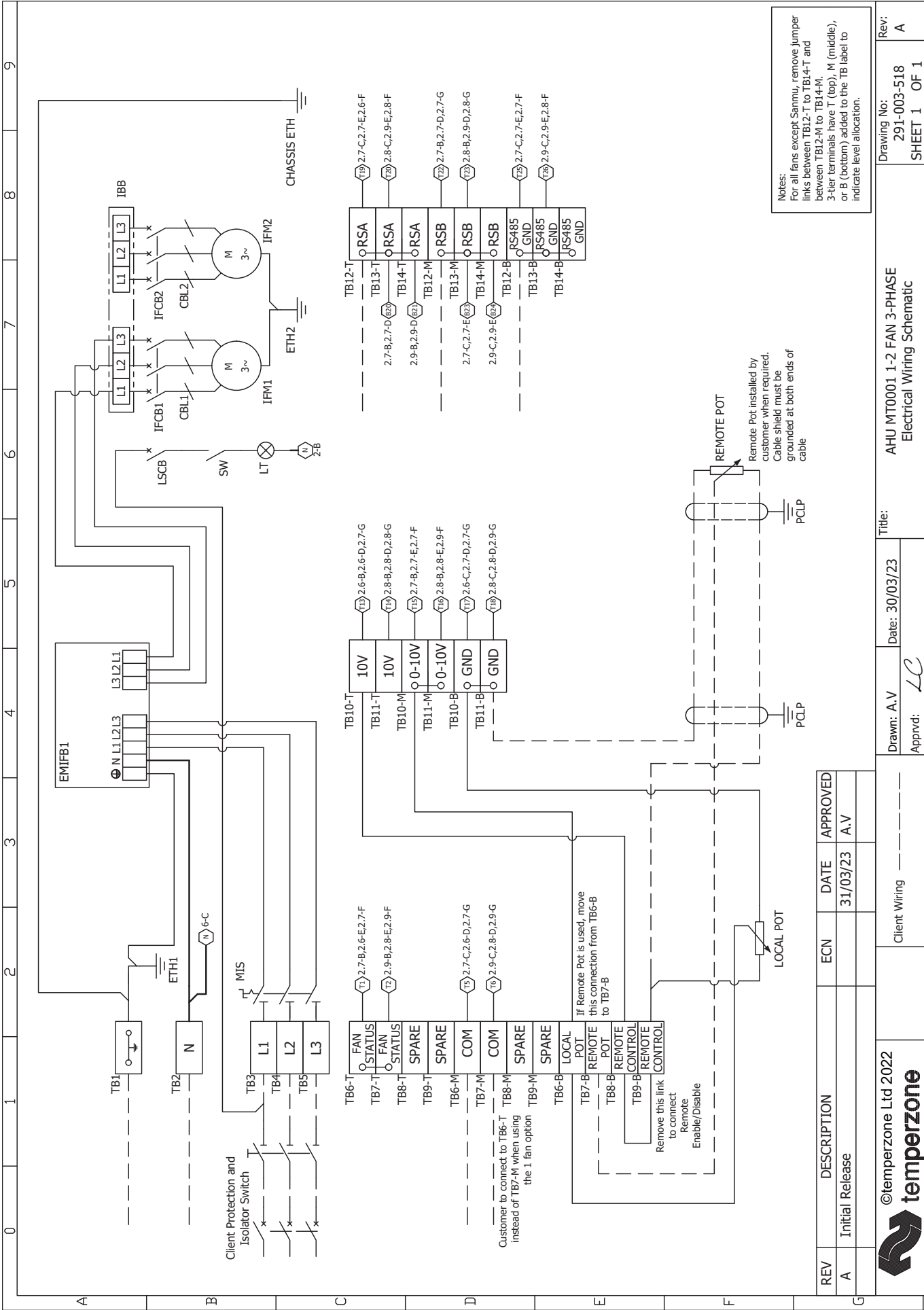
MT 120 Plenum Section



NOTE

Specifications are subject to change without notice due to the manufacturer's ongoing research and development programme.

NOTE



CBL

CABLE

EMIFB

MAINS EMI FILTER BOARD

ETH

EARTH STUD

IBB

INTERCONNECTING BUSBAR

JFCB

INDOOR FAN CIRCUIT BREAKER

IFM

INDOOR FAN MOTOR

LSCB

LIGHT SWITCH CIRCUIT BREAKER

LT

CLASS II LIGHT FITTING

MIS

MAIN ISOLATION SWITCH

PCLP

SHIELD GROUNDING CLIP

POT

POTENTIOMETER

SW

SWITCH

TB

TERMINAL BLOCK

1

2

3

4

5

6

7

8

9

IFM OPTIONS

Note: Fan options will change subject to fan supply availability

IFM1

24V D1 10V GND E1 A B GND A B NC C

RED

GREEN

BLUE

WHITE

BROWN

YELLOW

GREY

PINK

CBL1A

CBL1

CBL2A

CBL2

T19

T17

T15

T13

T11

T9

T7

T5

1.5C

1.5D

1.8C

1.8D

1.7C

1.7D

1.2C

1.2D

IFM2

24V D1 10V GND E1 A B GND A B NC C

RED

GREEN

BLUE

WHITE

BROWN

YELLOW

GREY

PINK

CBL1A

CBL1

CBL2A

CBL2

T19

T17

T15

T13

T11

T9

T7

T5

1.5C

1.5D

1.8C

1.8D

1.7C

1.7D

1.2C

1.2D

OPTION A - Ziehl Abegg

IFM1

NC 24V D1 10V GND E1 A B GND A B

RED

GREEN

BLUE

WHITE

BROWN

YELLOW

GREY

PINK

CBL1A

CBL1

CBL2A

CBL2

T19

T17

T15

T13

T11

T9

T7

T5

1.5C

1.5D

1.8C

1.8D

1.7C

1.7D

1.2C

1.2D

IFM2

NC 24V D1 10V GND E1 A B GND A B

RED

GREEN

BLUE

WHITE

BROWN

YELLOW

GREY

PINK

CBL1A

CBL1

CBL2A

CBL2

T19

T17

T15

T13

T11

T9

T7

T5

1.5C

1.5D

1.8C

1.8D

1.7C

1.7D

1.2C

1.2D

OPTION B - Rosenberg

IFM1

485A 485B GND 10V VSP GND NC COM

BROWN

BLACK

GREEN

RED

YELLOW

BLUE

RED

GRAY

CBL1A

CBL1

CBL2A

CBL2

T19

T17

T15

T13

T11

T9

T7

T5

1.8C

1.8D

1.5C

1.5D

1.2C

1.2D

IFM2

485A 485B GND 10V VSP GND NC COM

BROWN

BLACK

GREEN

RED

YELLOW

BLUE

RED

GRAY

CBL1A

CBL1

CBL2A

CBL2

T19

T17

T15

T13

T11

T9

T7

T5

1.8C

1.8D

1.5C

1.5D

1.2C

1.2D

REV

DESCRIPTION

ECN

DATE

APPROVED

A

Initial Release

31/03/23

A.V

temperzone

©temperzone Ltd 2022

Client Wiring

Drawn: A.V

Date: 30/03/23

Approved: LC

Title: AHU MT0001 1-2 FAN 3-PHASE Electrical Wiring Schematic

Rev: 291-003-518 A

SHEET 2 OF 2