

Model	OPA 450RLTFPQ-DZ-S4
Configuration	Horizontal Supply Air + Economiser + Viking
Item No. (Standard / Opposite Hand)	877-045-701-002 / 877-045-710-002
Configuration	Downward Supply Air + Economiser + Viking
Item No. (Standard / Opposite Hand)	877-045-723-002 / 877-045-732-002
Cooling capacity (net) ¹	43.3 kW
Cooling capacity range (gross)	18.2 ~ 52.4 kW
Heating capacity ¹	44.4 kW
Heating capacity range	16.5 ~ 54.5 kW
Electrical input - cooling	14.5 kW
Electrical input - heating	14.2 kW
EER / AEER (cooling) ¹	2.99 / 2.98
COP / ACOP (heating) ¹	3.14 / 3.13
Unit Controller	UC8
Refrigerant	R32
Refrigerant Charge	10.5 kg
Minimum floor area (@2.4m below ceiling diffuser)	58.6 m ²
Compressor oil type	POE-46 (NXG5020 or equivalent)
Compressor type	inverter scroll
Power supply ²	3 ph. 400 V ac 50 Hz + N + E
Compressor (3ph.) run amps ¹	19.5 A/ph.
Compressor + VSD circuit breaker	50 A
Indoor fan motor size	EC plug 500 dia. 3.58kW
Nominal air flow ²	2 200 l/s
Indoor fan motor (3ph.) - full load	5.5 A/ph.
Outdoor fan motor (3ph.) - full load	5.2 A/ph.
Outdoor fan capacitor size	n/a
Outdoor fan max. static pressure @ 5 500	125 Pa
Control circuit breaker (internal)	2 A
Auxiliary power outlet (1ph.) overload setting	10 A
Running amps (total system) ¹	24 / 22 / 24 A
Max. running amps (total system) ⁴	40 A/ph.
RCD type recommended	type B, 30mA, 3 pole
Net weight c/w Economiser	697 kg
Shipping Weight c/w Economiser	762 kg

Accessories:

Filters - rated EU4/G4 disposable	019-400-004 500x500x50 (x4) ³
Filters - rated EU4/G4 washable	019-000-033 500x500x50 (x4) ³
Drain tundish (set of 2)	060-000-653

Viking Controls:

SMT-920 Controller + RS-SS Outdoor Air Sensor	supplied
RS-SSD Room temperature controller	supplied

Refer to temperzone for other options.

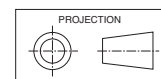
¹ Tested in accordance with AS/NZS 3823

² Voltage range: 376–440V

³ Filter sizes are nominal; refer to Temperzone for actual measurements.

⁴ For balanced supply voltage; refer Installation manual 4.1

DIMENSIONS (mm)

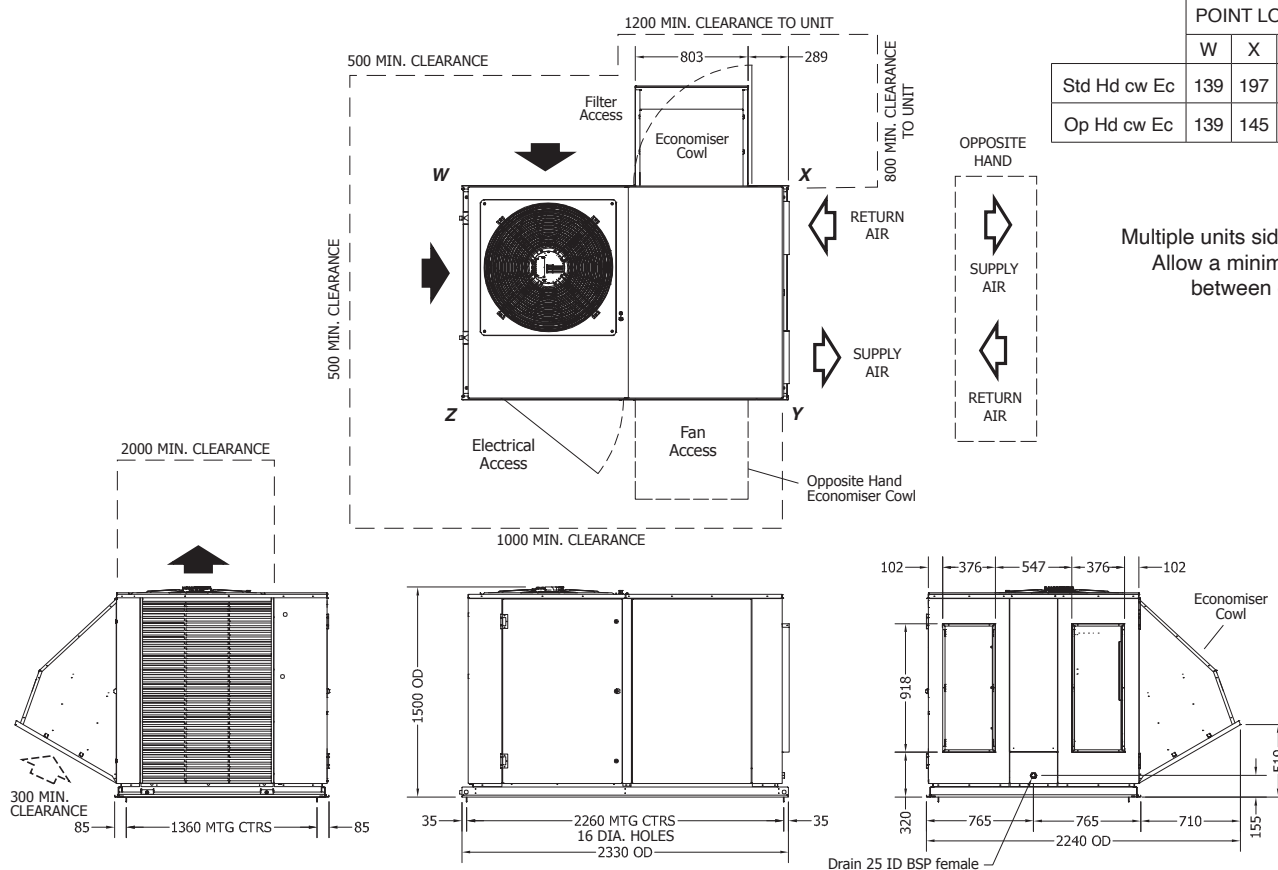


OPA 450RLTFP01-DZ-S4 Standard Hand, Horizontal Supply

Not to Scale

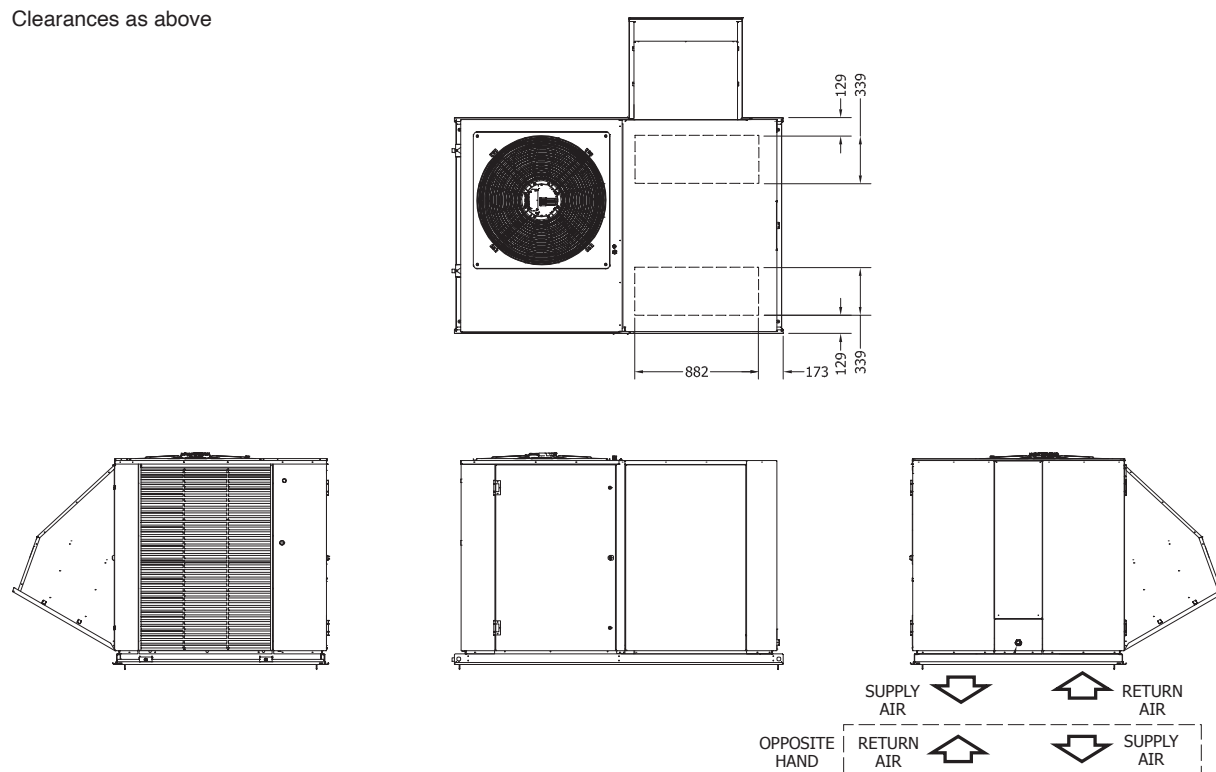
	POINT LOADS (kg)			
	W	X	Y	Z
Std Hd cw Ec	139	197	145	210
Op Hd cw Ec	139	145	197	210

Multiple units side-by-side:
Allow a minimum of 1m
between coil faces.



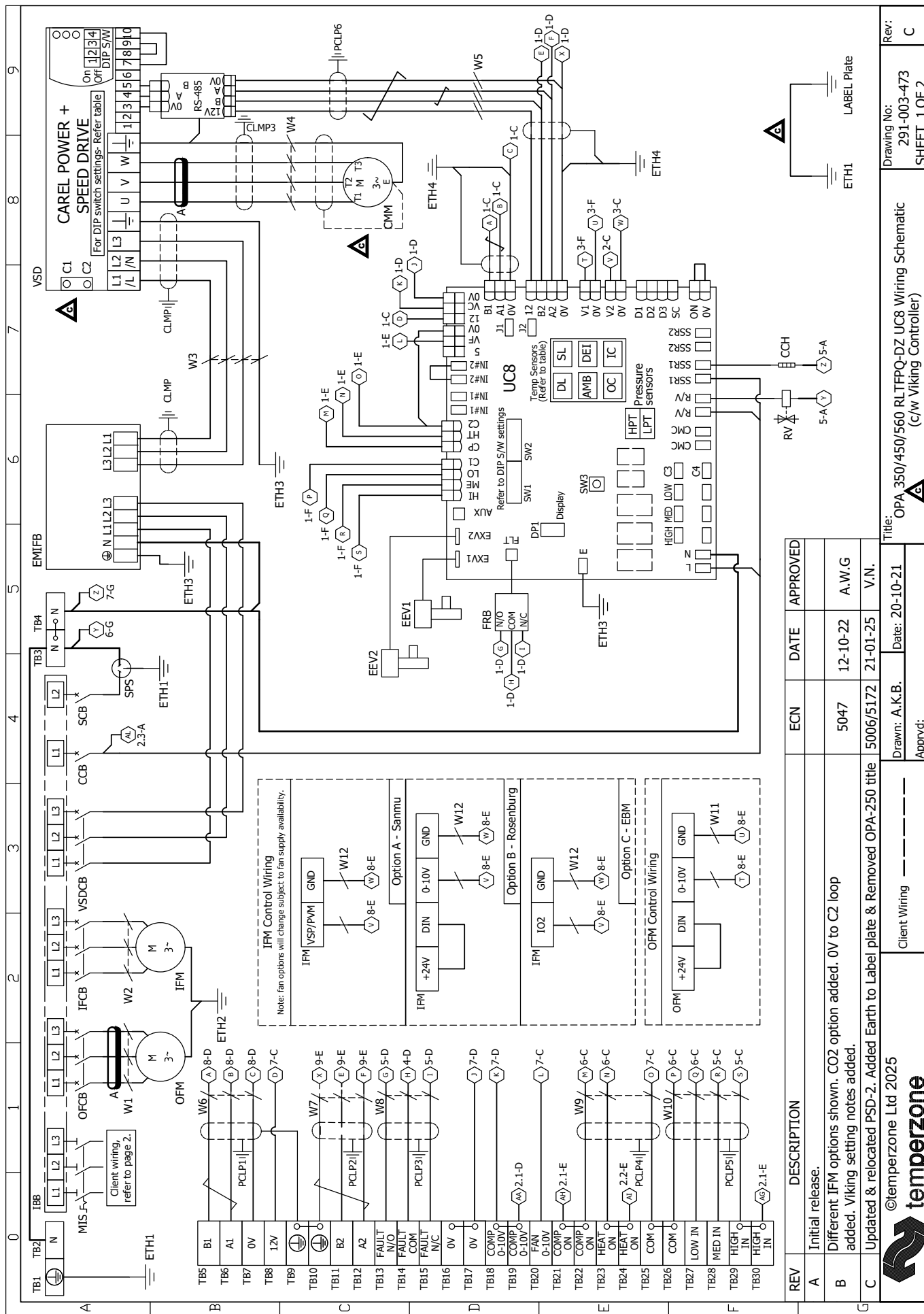
OPA 450RLTFP23-DZ-S4 Standard Hand, Downward Supply

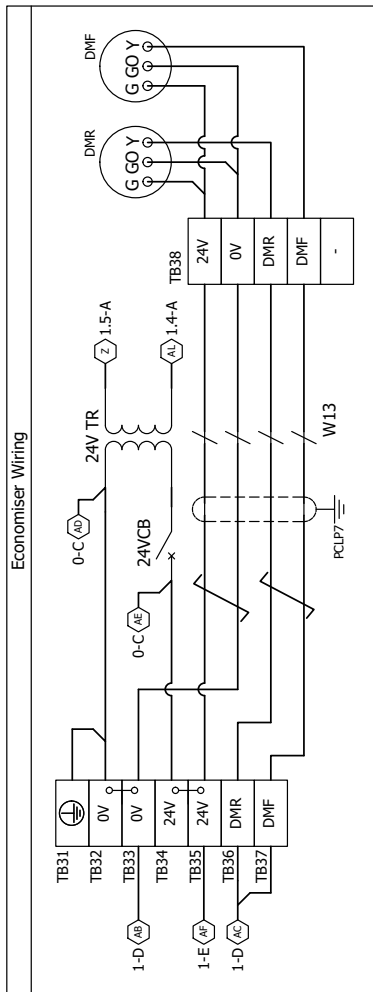
Clearances as above



NOTE

NOTE
Specifications are subject to change without notice due to the manufacturer's ongoing research and development programme.





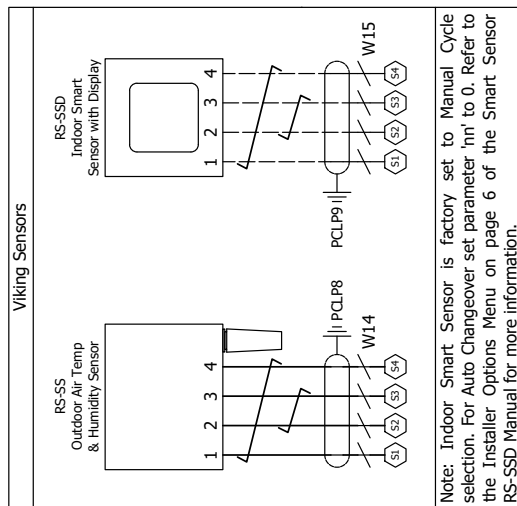
Economiser Wiring

Important Note:

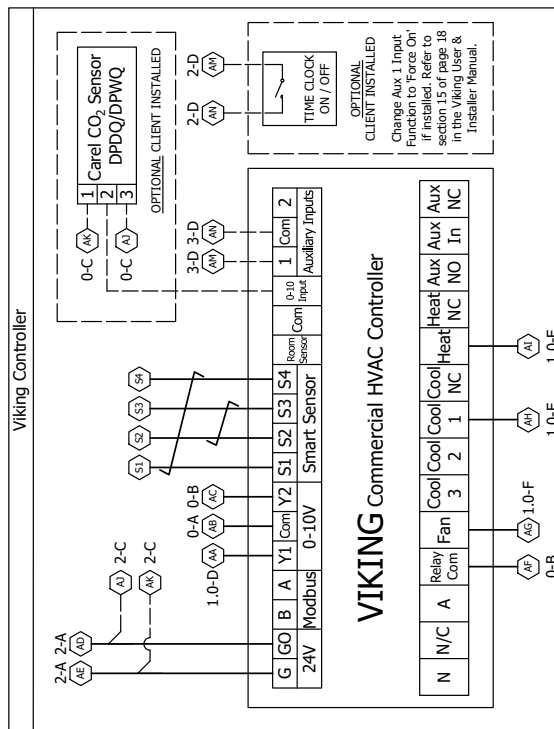
Unit requires 24 hour power supply for control circuit and crankcase heaters.

UC8 DIP Switch Settings	
DIP Switch	On/Off
1, 2, 4, 6, 7, 10, 14	On
All Others Off	Off

PSD DIP Switch Settings	
DIP Switch	On/Off
1,4	On
2,3	Off



Note: Indoor Smart Sensor is factory set to Manual Cycle selection. For Auto Changeover set parameter 'nn' to 0. Refer to the Installer Options Menu on page 6 of the Smart Sensor RS-SSD Manual for more information.



VIKING Commercial HVAC Controller

Important Notes:

- Twisted pairs: S1 & S4, S2 & S3
- Connect both sensors directly to the Viking Controller.

Viking DIP switch settings		
	DIP switch	On/Off
DPDQ402000	1,2,4	Off
DPWQ402000	1,2,4,5	Off
RS-SSD	1,2,3,4	Off
SMT-920	1,2	Off

Ferrites		
	Part Number	Frequency Type
A *	012-001-074	High
B	012-001-094	Low

* Ferrite 'A' on OFM only needed on OPA 450 and 560.

Sensors (S) / Transducers (T)			
	Name	Type	Colour
	DL	Discharge Temp	S GREY
	SL	Suction Temp	S WHITE
	AMB	Ambient Temp	S YELLOW
	DEI	De-ice Temp	S BLUE
	IC	De-ice Temp	S BLUE
	LPT	Suction Pressure	T
	HPT	High Pressure	T

REV	DESCRIPTION	ECN	DATE	APPROVED
A	Initial release.			
B	Different IFM options shown. CO2 option added. 0V to C2 loop added. Viking setting notes added.	5047	12-10-22	A.W.G
C	Unlabeled & relocated PSD-2 Added Earth to Label plate & Removed OBA-250 title	5006/5172	21-01-25	V.N

©temperzone Ltd 2025



Title: OPA 350/450/560 RLTFPQ-DZ UC8 Wiring Schematic
 (c/w Viking Controller)

Drawing No:
291-003-473
SHEET 2 OF 2