

Model	OPA 350RLTFPQ-DZ-S4
Configuration	Horizontal Supply Air + Economiser + Viking
Item No. (Standard / Opposite Hand)	877-035-701-002 / 877-035-710-002
Configuration	Downward Supply Air + Economiser + Viking
Item No. (Standard / Opposite Hand)	877-035-723-002 / 877-035-732-002
Cooling capacity (net) ¹	34.8 kW
Cooling capacity range (gross)	18.0 ~ 45.4 kW
Heating capacity ¹	37.0 kW
Heating capacity range	13.9 ~ 47.0 kW
Electrical input - cooling	11.1 kW
Electrical input - heating	11.5 kW
EER / AEER (cooling) ¹	3.15 / 3.14
COP / ACOP (heating) ¹	3.21 / 3.19
Unit Controller	UC8
Refrigerant	R32
Refrigerant Charge	10.5 kg
Minimum floor area (@2.4m below ceiling diffuser)	58.6 m ²
Compressor oil type	POE-46 (NXG5020 or equivalent)
Compressor type	inverter scroll
Power supply ¹²	3 ph. 400 V ac 50 Hz + N + E
Compressor (3ph.) run amps ¹	14 A/ph
Compressor + VSD circuit breaker	40 A
Indoor fan motor size	EC plug 500 dia. 3.58kW
Nominal air flow at rating conditions	1800 l/s
Indoor fan motor (3ph.) - full load	5.5 A/ph.
Outdoor fan motor (3ph.) - full load	4.6 A/ph.
Outdoor fan max. static pressure @ 3800 l/s	125 Pa
Control circuit breaker (internal)	2 A
Auxiliary power outlet (1ph.) overload setting	10 A
Running amps (total system) ¹	17.5 / 15.5 / 19.5 A
Max. running amps (total system) ⁴	35 A/ph.
RCD type recommended	type B, 30mA, 3 pole
Net weight c/w Economiser	649 kg
Shipping weight c/w Economiser	674 kg

Accessories:

Filters - rated EU4/G4 disposable	019-400-001 600x300x50 (x1) ³ 019-400-005 600x500x50 (x2)
Filters - rated EU4/G4 washable	019-000-037 600x300x50 (x1) ³ 019-000-034 600x500x50 (x2)
Drain tundish (set of 2)	060-000-653

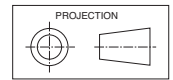
Viking Controls:

SMT-920 Controller + RS-SS Outdoor Air Sensor	supplied
RS-SSD Room temperature controller	supplied

Refer to temperzone for other options.

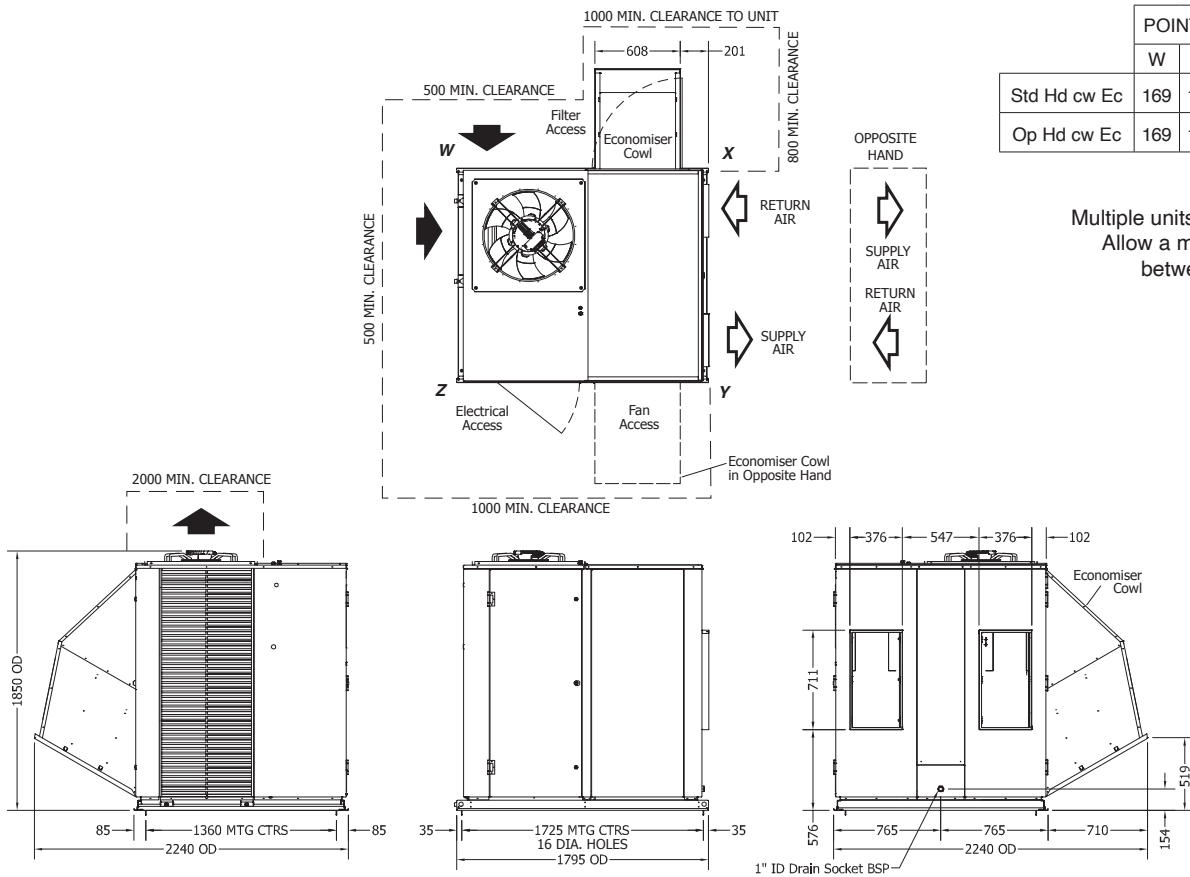
¹ Tested in accordance with AS/NZS 3823² Voltage range: 376-440V³ Filter sizes are nominal; refer to Temperzone for actual measurements.⁴ For balanced supply voltage; refer Installation manual 4.1

DIMENSIONS (mm)



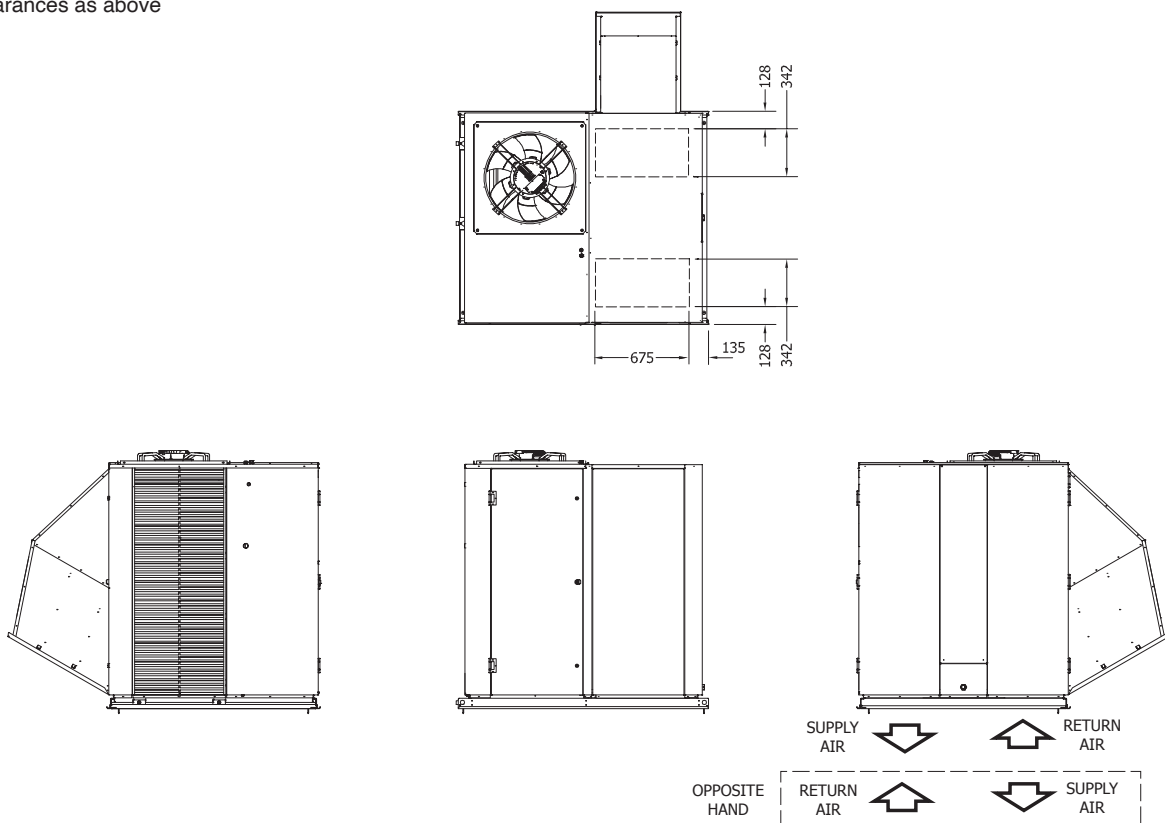
Not to Scale

OPA 350RLTFP01-DZ-S4 Standard Hand, Horizontal Supply



OPA 350RLTFP23-DZ-S4 Standard Hand, Downward Supply

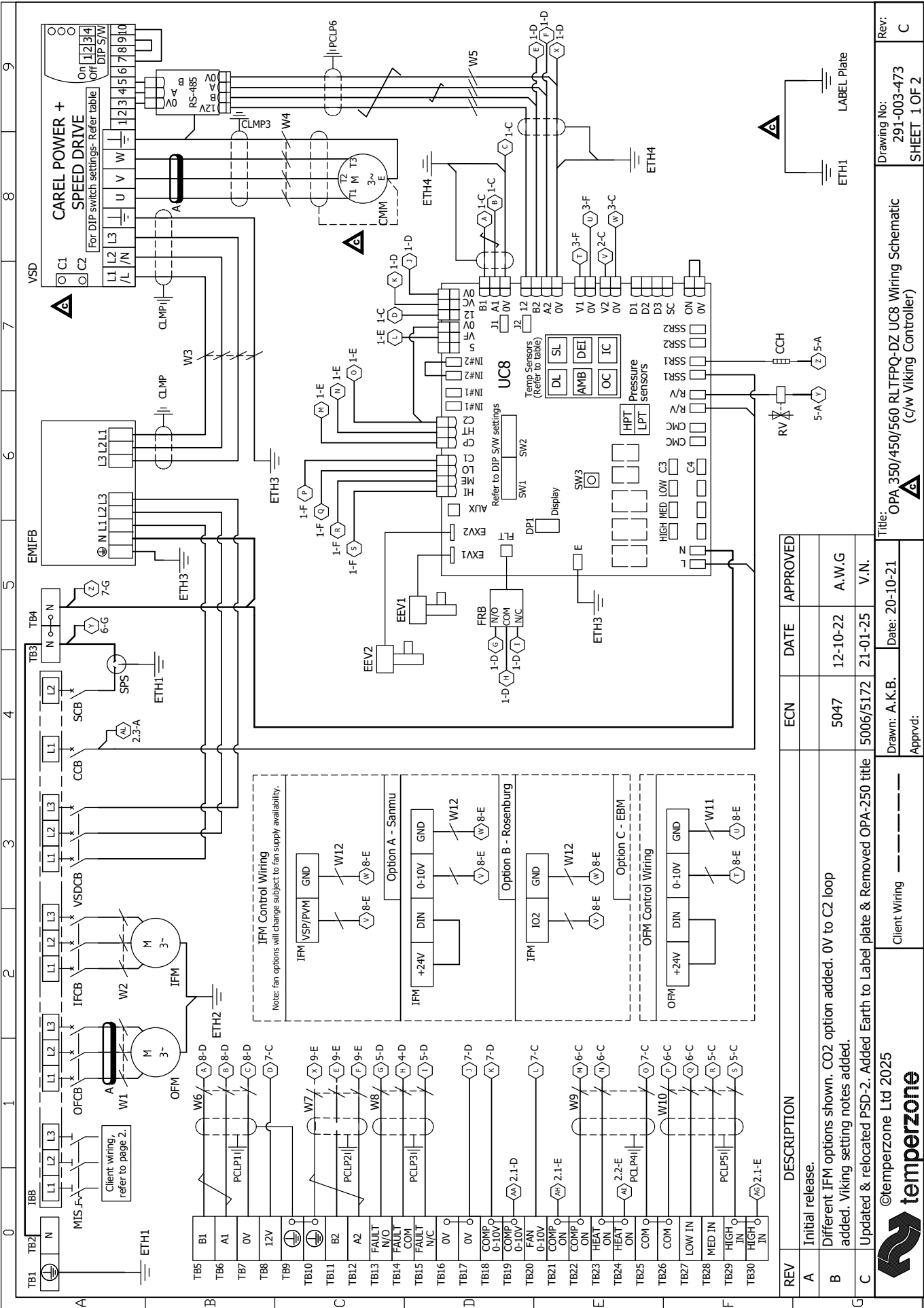
Clearances as above



NOTE

Specifications are subject to change without notice due to the manufacturer's ongoing research and development programme.

WIRING



REV	DESCRIPTION	ECN	DATE	APPROVED
A	Initial release.			
B	Different IFM options shown. CO2 option added. 0V to C2 loop added. Viking setting notes added.	5047	12-10-22	A.W.G
C	Updated & relocated PSD-2. Added Earth to Label plate & Removed OPA-250 title	5006/5172	21-01-25	V.N.

Client Wiring		Title: OPA 350/450/560 RLTFPO-DZ UC8 Wiring Schematic (c/w Viking Controller)	
Drawn: A.K.B.	Date: 20-10-21	Approved:	
©temperzone Ltd 2025		Rev: 291-003-473 SHEET 2 OF 2	

Sensors (S) / Transducers (T)	
Name	Type
DL Discharge Temp	S
SL Suction Temp	S
AMB Ambient Temp	S
DEI De-ice Temp	S
IC De-ice Temp	S
LPT Suction Pressure	T
HPT High Pressure	T

Ferrites	
Part Number	Frequency Type
A* 012-001-074	High
B 012-001-094	Low

Viking DIP switch settings	
DIP switch	On/Off
DPDQ402000	Off
DPWQ402000	Off
RS-SSD	Off
SMT-920	Off

Important Notes:	
- Twisted pairs: S1 & S4, S2 & S3 - Connect both sensors directly to the Viking Controller.	

Viking Commercial HVAC Controller	
Relay	Com
N	N/C
A	Heat
1	Cool
2	Cool
3	Cool
4	Aux
5	Aux
6	Aux
7	In
8	NC
9	NC
10	NC

Viking Sensors	
RS-SSD	Outdoor Air Temp & Humidity Sensor
RS-SSD	Indoor Smart Sensor with Display

Important Note:	
Unit requires 24 hour power supply for control circuit and crankcase heaters.	

UC8 DIP Switch Settings	
DIP Switch	On/Off
1,2,4,6,7,10,14	On
All Others	Off

PSD DIP Switch Settings	
DIP Switch	On/Off
1,4	On
2,3	Off

Client Wiring	
TB1	N
TB2	MIS
TB3	L1
TB4	L2
TB5	L3
TB6	0V
TB7	1.2V
TB8	Earth

Customer BMS Input	
B1	0V
A1	1.2V
0V	Earth

Client External Protection and Isolator Switch	
24V	Control Circuit Breaker
0V	Crankcase Heater
DMR	Compressor Motor
DMF	Damper Motor Fresh Air
DMR	Damper Motor Return Air
EEV	Electronic Expansion Valve
EMIFB	EMI Filter Board
ETH	Earth
FRB	Fault Relay Board
IFCB	Indoor Fan Circuit Breaker
IFM	Indoor Fan Motor
IBB	Insulated Bus Bar
MIS	Main Isolator Switch
OFCB	Outdoor Fan Circuit Breaker
OFM	Outdoor Fan Motor
PCLP	P Clip
RV	Reversing Valve
SCB	Socket Circuit Breaker
SPS	Single Phase Socket
TB	Terminal Block
TR	Transformer
UC8	Unit Controller 8
VSD	Variable Speed Drive
VSDCB	Variable Speed Drive Circuit Breaker
W	Cable Marker