

Model	OPA 680RLTB2FPQD Econex Pro
Configuration	Horizontal Supply Air
Item No. (Standard / Opposite Hand)	876-068-701 / 876-068-710
Configuration	Downward Supply Air
Item No. (Standard / Opposite Hand)	876-068-723 / 876-068-732
Configuration	Upward Supply Air
Item No. (Standard / Opposite Hand)	876-068-745 / 876-068-754
Cooling capacity (net) ¹	65.1 kW
Cooling capacity range (gross)	14.4 ~ 79.0 kW
Heating capacity ¹	64.5 kW
Heating capacity range	8.3 ~ 72.3 kW
Electrical input - cooling	17.1 kW
Electrical input - heating	16.5 kW
EER / AEER (cooling) ¹	3.81 / 3.78
COP / ACOP (heating) ¹	3.91 / 3.88
Operating Range (outdoor ambient) - cooling	-10°C ~ 50°C
Operating Range (outdoor ambient) - heating	-10°C ~ 25°C
Master Controller	c.pCO
Slave Controllers	UC8 (x2)
Refrigerant	R32
Refrigerant Charge	7.0 kg/sys.
Minimum floor area (@2.4m below ceiling diffuser)	26 m ²
Compressor oil type	POE-46 (NXG5020 or equivalent)
Compressor type	inverter scroll (x2)
Power supply ²	3 ph. 400 V ac 50 Hz + N + E
Compressor (3ph.) run amps at rating cond.	12.5 A/ph.(x2)
Compressor + VSD circuit breaker	32 A (x2)
Indoor fan motor size	EC Plug 500 dia. 3.65kW (x2)
Nominal air flow at rating conditions	3 600 l/s
Indoor fan motor (3ph.) - full load	4.8 A/ph. (x2)
Outdoor fan motor (3ph.) - full load	3.5 A/ph. (x2)
Outdoor fan - max. external static available@ 8 400 l/s	100 Pa
Control circuit breaker (internal)	2 A
Single phase socket circuit breaker	10 A
Running amps (total system) ¹	25 / 28 / 31 A
Max. running amps (total system)	50 / 54 / 59 A
RCD type recommended	type B, 30mA, 3 pole
Net weight	1214 kg
Shipping weight	1279 kg

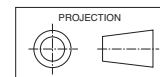
Accessories:

Remote wired Service Interface Device (pGDM)	201-000-867
Filters - rated EU4/G4 disposable	019-400-004 500x500x50 (x9) ³
Filters - rated EU4/G4 washable (NZ Only)	019-000-033 500x500x50 (x9) ³
Drain tundish (2 per set; 2 sets required)	060-000-653

Refer to temperzone for other options.

¹ Tested in accordance with AS/NZS 3823² Voltage range: 376–440V³ Filter sizes are nominal; refer to Temperzone for actual measurements.

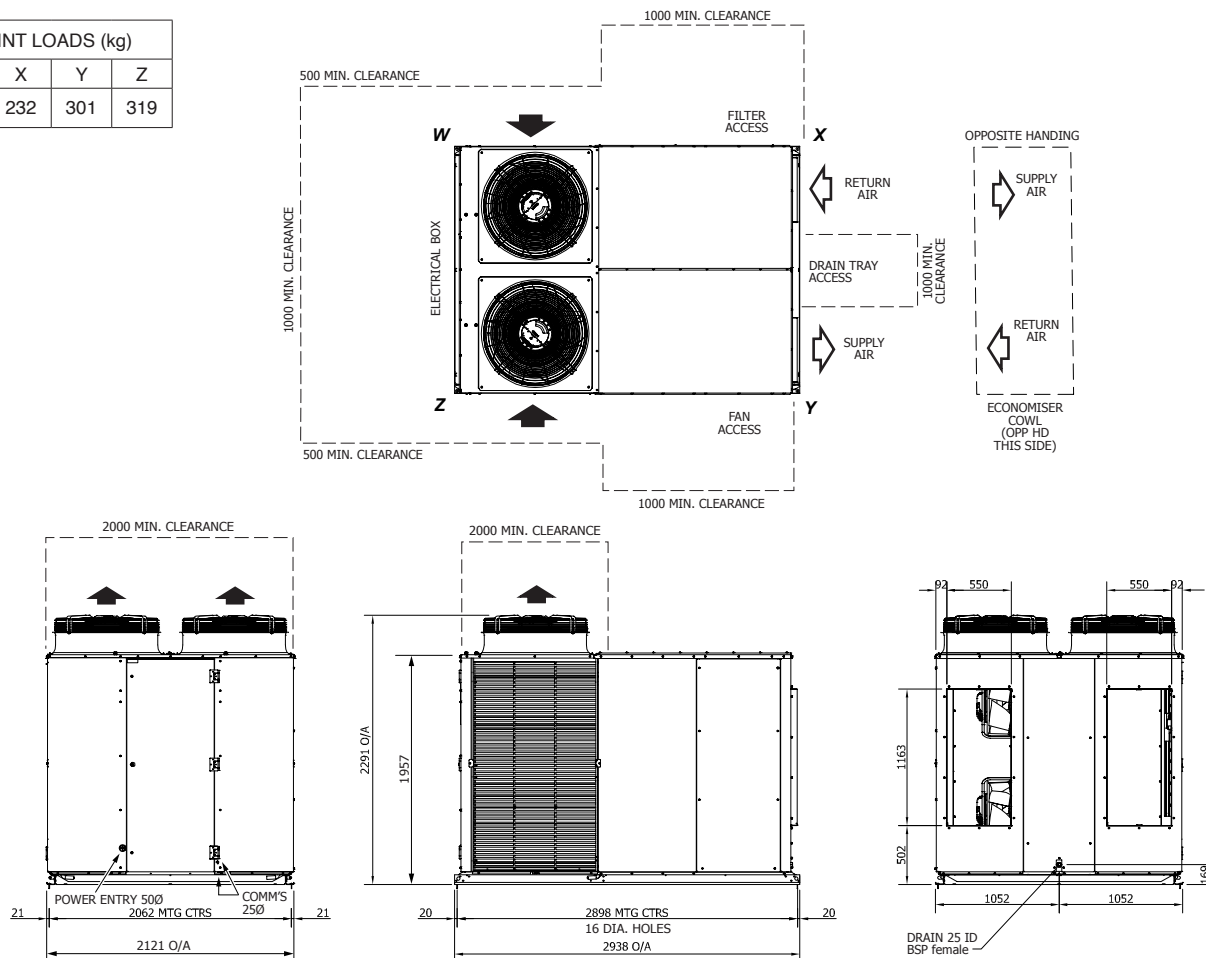
DIMENSIONS (mm)



OPA 680RLTBFPQD01 Standard Hand, Horizontal Supply

Not to Scale

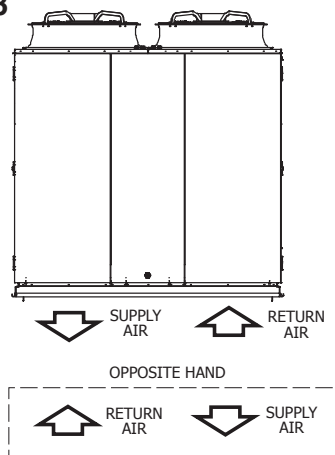
POINT LOADS (kg)			
W	X	Y	Z
362	232	301	319



OPA 680RLTBFPQD23

Standard Hand,
Downward Supply

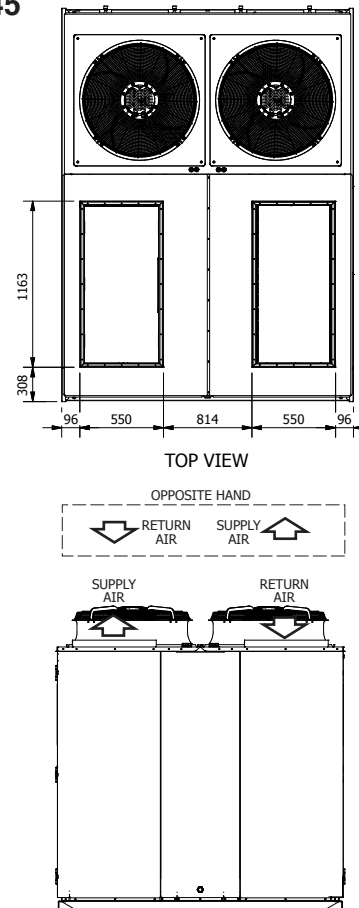
Clearances as above



OPA 680RLTBFPQD45

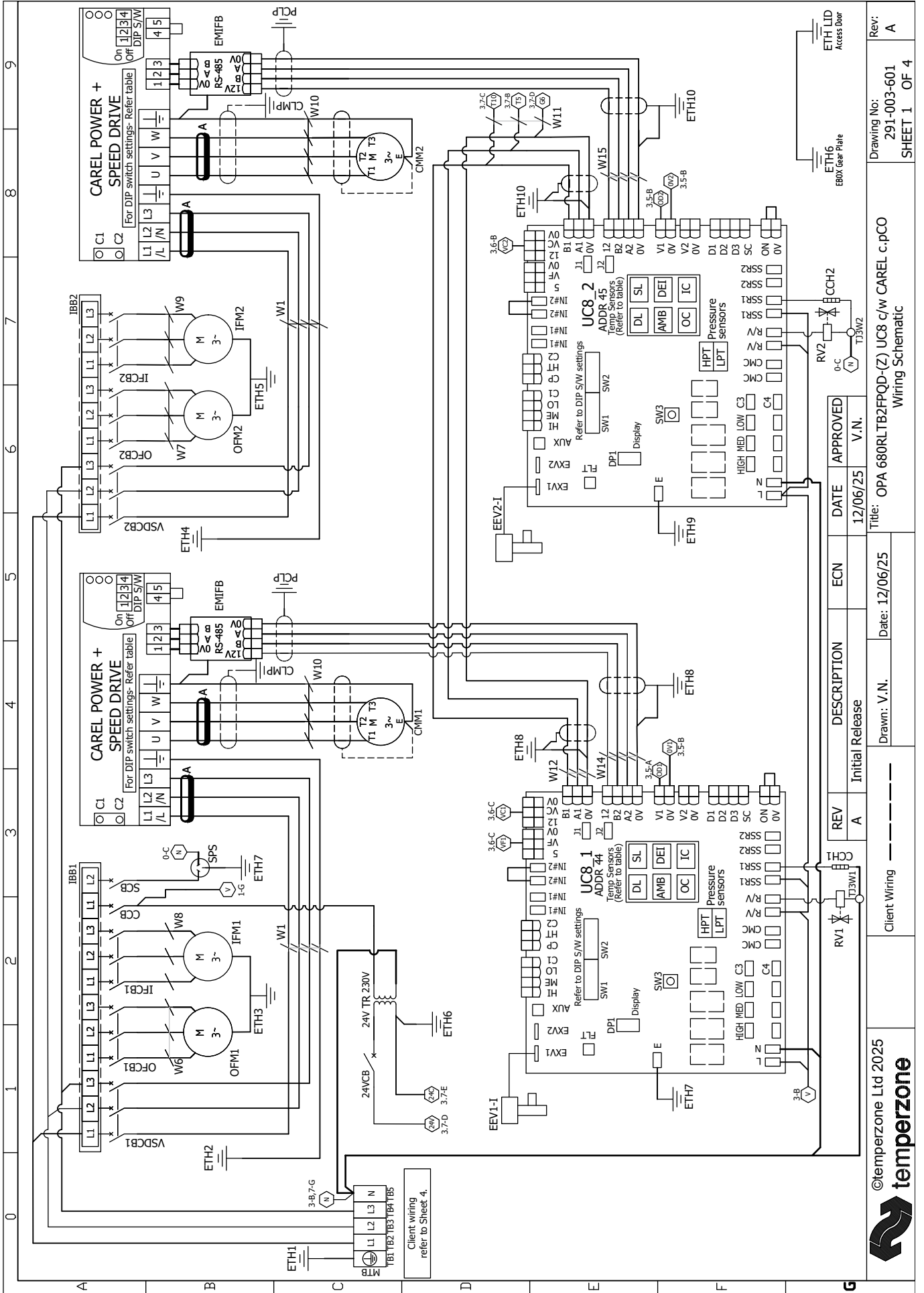
Standard Hand,
Upward Supply

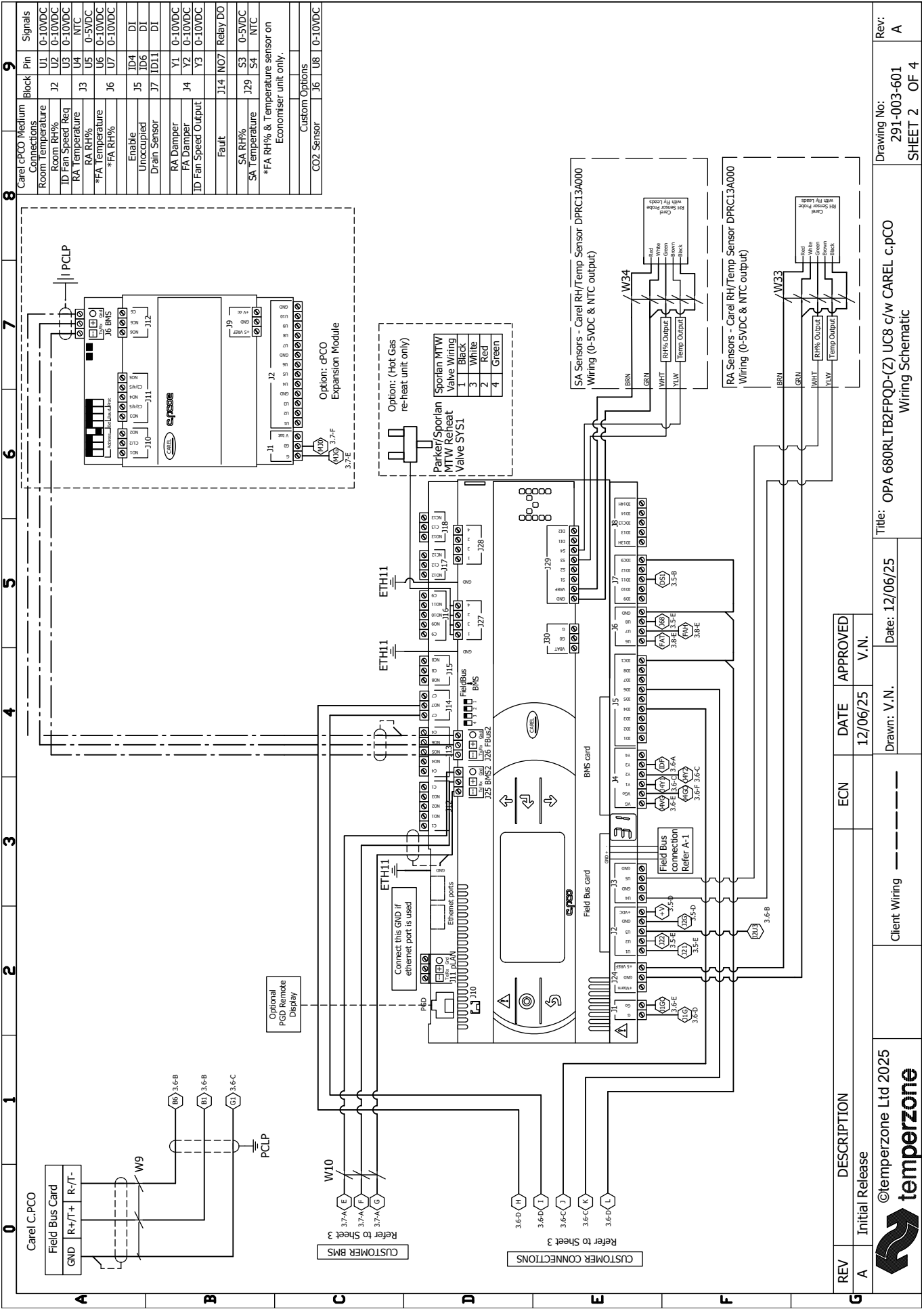
Clearances as above



NOTE

Specifications are subject to change without notice due to the manufacturer's ongoing research and development programme.





0 1 2 3 4 5 6 7 8 9

EBM OUTDOOR FAN CONNECTIONS

OFM1

RSA	RSB	RSA	RSB	IO2	GND
White	Brown	Grey	Pink	Yellow	Green

W23

6-B

6-C

6-D

6-E

6-F

6-G

6-H

6-I

6-J

6-K

6-L

6-M

6-N

6-O

6-P

6-Q

6-R

6-S

6-T

6-U

6-V

6-W

6-X

6-Y

6-Z

W24

6-B

6-C

6-D

6-E

6-F

6-G

6-H

6-I

6-J

6-K

6-L

6-M

6-N

6-O

6-P

6-Q

6-R

6-S

6-T

6-U

6-V

6-W

6-X

6-Y

6-Z

OFM2

RSA	RSB	RSA	RSB	IO2	GND
White	Brown	Grey	Pink	Yellow	Green

W3

6-B

6-C

6-D

6-E

6-F

6-G

6-H

6-I

6-J

6-K

6-L

6-M

6-N

6-O

6-P

6-Q

6-R

6-S

6-T

6-U

6-V

6-W

6-X

6-Y

6-Z

W4

6-B

6-C

6-D

6-E

6-F

6-G

6-H

6-I

6-J

6-K

6-L

6-M

6-N

6-O

6-P

6-Q

6-R

6-S

6-T

6-U

6-V

6-W

6-X

6-Y

6-Z

EBM INDOOR FAN CONNECTIONS

IFM1

RSA	RSB	RSA	RSB	IO2	GND
Org/Wht	Orange	Blu/Wht	Blue	Gm/Wht	Green

W25

6-B

6-C

6-D

6-E

6-F

6-G

6-H

6-I

6-J

6-K

6-L

6-M

6-N

6-O

6-P

6-Q

6-R

6-S

6-T

6-U

6-V

6-W

6-X

6-Y

6-Z

W26

6-B

6-C

6-D

6-E

6-F

6-G

6-H

6-I

6-J

6-K

6-L

6-M

6-N

6-O

6-P

6-Q

6-R

6-S

6-T

6-U

6-V

6-W

6-X

6-Y

6-Z

IFM2

RSA	RSB	RSA	RSB	IO2	GND
Org/Wht	Orange	Blu/Wht	Blue	Gm/Wht	Green

W5

6-B

6-C

6-D

6-E

6-F

6-G

6-H

6-I

6-J

6-K

6-L

6-M

6-N

6-O

6-P

6-Q

6-R

6-S

6-T

6-U

6-V

6-W

6-X

6-Y

6-Z

W6

6-B

6-C

6-D

6-E

6-F

6-G

6-H

6-I

6-J

6-K

6-L

6-M

6-N

6-O

6-P

6-Q

6-R

6-S

6-T

6-U

6-V

6-W

6-X

6-Y

6-Z

OPTIONAL: DAMPERS

Note: If economiser is supplied, ensure FA RH% and temperature sensor is connected.

W17

DMFA

RED

BLACK

WHITE

ORANGE

W18

DMRA

RED

BLACK

WHITE

ORANGE

ACTUATOR TERMINALS

24VAC

0V

Position Command 0-10VDC

Position Feedback 0-10VDC

TERMINAL BLOCKS

TB Pin-1J

TB Pin-2J

TB Pin-1J

TB Pin-2J

Triple Deck Terminal Block

Dwyer Filter Differential Pressure Transmitter MSX-W12-PA (0-10VDC output) W37

DIP switches setting

Dwyer Differential Pressure Transmitter 616KD-13-V-TC (0-10VDC output) Refer sheet 4 for tubing instruction W35

Room Sensor - Carel RH/Temp Sensor DPPC12000 (Supplied Loose)

DIP switches setting - Factory Default

Belimo Drain Sensor EXT-TN-1071375 Wiring NO output W36

FA Sensor - Carel RH/Temp Sensor DPPC12000 (For Economiser Option) W38

DIP switches setting - Factory Default

OPTIONAL: Carel CO2 Sensor DPWQ40200 (0-10VDC output)

DIP switches setting - Factory Default

Rev: A

Drawing No: 291-003-601

Sheet 3 OF 4

Rev: A

Initial Release

DESCRIPTION

ECN

DATE

APPROVED

©temperzone Ltd 2025

temperzone

Client Wiring

12/06/25

V.N.

Drawn: V.N.

Date: 12/06/25

Title: OPA 680RLTB2FPQD-(Z) UC8 c/w CAREL c.pCO Wiring Schematic

Rev: A

Drawing No: 291-003-601

Sheet 3 OF 4

0	1	2	3	4	5	6	7	8	9																																																																																																																																																																																																																																
A <table border="1" style="width:100%; border-collapse: collapse;"> <tr><td>24VCB</td><td>24 Volt Circuit Breaker</td></tr> <tr><td>CCB</td><td>Control Circuit Breaker</td></tr> <tr><td>CCH</td><td>Crankcase Heater</td></tr> <tr><td>CMC</td><td>Compressor Motor</td></tr> <tr><td>DMF</td><td>Damper Motor Fresh Air</td></tr> <tr><td>DMR</td><td>Damper Motor Return Air</td></tr> <tr><td>EEV</td><td>Electronic Expansion Valve</td></tr> <tr><td>EMIFB</td><td>Electromagnetic Interference Filter Board</td></tr> <tr><td>ETH</td><td>Earth</td></tr> <tr><td>IBB</td><td>Insulated Bus Bar</td></tr> <tr><td>IFCB</td><td>Indoor Fan Circuit Breaker</td></tr> <tr><td>IFM</td><td>Indoor Fan Motor</td></tr> <tr><td>MTB</td><td>Main Terminal Block</td></tr> <tr><td>OFCB</td><td>Outdoor Fan Circuit Breaker</td></tr> <tr><td>OFM</td><td>Outdoor Fan Motor</td></tr> <tr><td>PCLP</td><td>P Clip</td></tr> <tr><td>RV</td><td>Reversing Valve</td></tr> <tr><td>SCB</td><td>Socket Circuit Breaker</td></tr> <tr><td>SPS</td><td>Single Phase Socket</td></tr> <tr><td>TB</td><td>Terminal Block</td></tr> <tr><td>TJ3W</td><td>Terminal Junction 3 Way</td></tr> <tr><td>TR</td><td>Transformer</td></tr> <tr><td>UC8</td><td>Unit Controller 8</td></tr> <tr><td>VSD</td><td>Variable Speed Drive</td></tr> <tr><td>VSDCB</td><td>Variable Speed Drive Circuit Breaker</td></tr> <tr><td>Wxx</td><td>Cable Marker</td></tr> </table>	24VCB	24 Volt Circuit Breaker	CCB	Control Circuit Breaker	CCH	Crankcase Heater	CMC	Compressor Motor	DMF	Damper Motor Fresh Air	DMR	Damper Motor Return Air	EEV	Electronic Expansion Valve	EMIFB	Electromagnetic Interference Filter Board	ETH	Earth	IBB	Insulated Bus Bar	IFCB	Indoor Fan Circuit Breaker	IFM	Indoor Fan Motor	MTB	Main Terminal Block	OFCB	Outdoor Fan Circuit Breaker	OFM	Outdoor Fan Motor	PCLP	P Clip	RV	Reversing Valve	SCB	Socket Circuit Breaker	SPS	Single Phase Socket	TB	Terminal Block	TJ3W	Terminal Junction 3 Way	TR	Transformer	UC8	Unit Controller 8	VSD	Variable Speed Drive	VSDCB	Variable Speed Drive Circuit Breaker	Wxx	Cable Marker	B <table border="1" style="width:100%; border-collapse: collapse;"> <tr><td>DL</td><td>Discharge</td><td>S</td><td>Grey</td></tr> <tr><td>SL</td><td>Suction</td><td>S</td><td>White</td></tr> <tr><td>AMB</td><td>Ambient</td><td>S</td><td>Black</td></tr> <tr><td>DET</td><td>Deice</td><td>S</td><td>Blue</td></tr> <tr><td>LPT</td><td>Suction Pressure</td><td>T</td><td>Grey</td></tr> <tr><td>HPT</td><td>High Pressure</td><td>T</td><td>Grey</td></tr> </table> <table border="1" style="width:100%; border-collapse: collapse;"> <tr><th colspan="3">Sensor to Carel cPCO</th></tr> <tr><th>Name</th><th>Type</th><th>Colour</th></tr> <tr><td>*Room</td><td>Room Air</td><td>RH% & Temp</td></tr> <tr><td>RA</td><td>Return Air</td><td>RH% & Temp</td></tr> <tr><td>SA</td><td>Supply Air</td><td>RH% & Temp</td></tr> <tr><td>**FA</td><td>Fresh Air</td><td>RH% & Temp</td></tr> <tr><td colspan="3">*Room sensor supplied loose.</td></tr> <tr><td colspan="3">**FA sensor on Economiser unit only.</td></tr> </table>	DL	Discharge	S	Grey	SL	Suction	S	White	AMB	Ambient	S	Black	DET	Deice	S	Blue	LPT	Suction Pressure	T	Grey	HPT	High Pressure	T	Grey	Sensor to Carel cPCO			Name	Type	Colour	*Room	Room Air	RH% & Temp	RA	Return Air	RH% & Temp	SA	Supply Air	RH% & Temp	**FA	Fresh Air	RH% & Temp	*Room sensor supplied loose.			**FA sensor on Economiser unit only.			C <table border="1" style="width:100%; border-collapse: collapse;"> <tr><th colspan="3">Sensor(S) / Transducers (T) to UC8</th></tr> <tr><th>Name</th><th>Type</th><th>Colour</th></tr> <tr><td>DL</td><td>Discharge</td><td>S</td><td>Grey</td></tr> <tr><td>SL</td><td>Suction</td><td>S</td><td>White</td></tr> <tr><td>AMB</td><td>Ambient</td><td>S</td><td>Black</td></tr> <tr><td>DET</td><td>Deice</td><td>S</td><td>Blue</td></tr> <tr><td>LPT</td><td>Suction Pressure</td><td>T</td><td>Grey</td></tr> <tr><td>HPT</td><td>High Pressure</td><td>T</td><td>Grey</td></tr> </table> <table border="1" style="width:100%; border-collapse: collapse;"> <tr><th colspan="3">Unit with No Reheat</th></tr> <tr><td colspan="3">* 1 x EEV per system</td></tr> <tr><td colspan="3">* Carel cPCO Medium version with built-in EVD</td></tr> <tr><td colspan="3">* 1 x Carel Field Bus Card</td></tr> <tr><td>Compressor</td><td>UC8 DIP SWITCHES</td><td>ON</td></tr> <tr><td>ALL SYSTEMS</td><td>INVERTER</td><td>1, 4, 6, 7, 9, 14</td></tr> </table> <table border="1" style="width:100%; border-collapse: collapse;"> <tr><th colspan="3">Unit with Reheat</th></tr> <tr><td colspan="3">* 2 x EEV on System 1</td></tr> <tr><td colspan="3">* 1 x EEV on System 2</td></tr> <tr><td colspan="3">* 1 x reheat coil</td></tr> <tr><td colspan="3">* 1x Sporlan / Parker modulating valves</td></tr> <tr><td colspan="3">* Carel cPCO Medium version with built-in EVD</td></tr> <tr><td colspan="3">* 1 x Carel Field Bus Card</td></tr> <tr><td>Compressor</td><td>UC8 DIP SWITCHES</td><td>ON</td></tr> <tr><td>ALL SYSTEMS</td><td>INVERTER</td><td>1, 4, 6, 7, 9, 14</td></tr> </table>	Sensor(S) / Transducers (T) to UC8			Name	Type	Colour	DL	Discharge	S	Grey	SL	Suction	S	White	AMB	Ambient	S	Black	DET	Deice	S	Blue	LPT	Suction Pressure	T	Grey	HPT	High Pressure	T	Grey	Unit with No Reheat			* 1 x EEV per system			* Carel cPCO Medium version with built-in EVD			* 1 x Carel Field Bus Card			Compressor	UC8 DIP SWITCHES	ON	ALL SYSTEMS	INVERTER	1, 4, 6, 7, 9, 14	Unit with Reheat			* 2 x EEV on System 1			* 1 x EEV on System 2			* 1 x reheat coil			* 1x Sporlan / Parker modulating valves			* Carel cPCO Medium version with built-in EVD			* 1 x Carel Field Bus Card			Compressor	UC8 DIP SWITCHES	ON	ALL SYSTEMS	INVERTER	1, 4, 6, 7, 9, 14	D <table border="1" style="width:100%; border-collapse: collapse;"> <tr><th colspan="3">VSD DIP switch settings</th></tr> <tr><td>DIP switch</td><td>↑</td><td>On/Off</td><td>↓</td></tr> <tr><td>1,4</td><td></td><td>On</td><td></td></tr> <tr><td>2,3</td><td></td><td>Off</td><td></td></tr> </table> <table border="1" style="width:100%; border-collapse: collapse;"> <tr><th colspan="3">Modbus Devices Address</th></tr> <tr><td>UC8</td><td></td><td>44, 45</td></tr> <tr><td>VSD</td><td></td><td>10</td></tr> <tr><td>IFM</td><td></td><td>21, 22</td></tr> <tr><td>OFM</td><td></td><td>31, 32</td></tr> </table>	VSD DIP switch settings			DIP switch	↑	On/Off	↓	1,4		On		2,3		Off		Modbus Devices Address			UC8		44, 45	VSD		10	IFM		21, 22	OFM		31, 32	E <table border="1" style="width:100%; border-collapse: collapse;"> <tr><th colspan="3">Ferrites</th></tr> <tr><th>Part Number</th><th>Frequency Type</th><th>Number of Turns</th></tr> <tr><td>A 012-001-074</td><td>High</td><td>1</td></tr> </table> 	Ferrites			Part Number	Frequency Type	Number of Turns	A 012-001-074	High	1	F <div style="border: 1px solid black; padding: 5px;"> <p>Important Notes:</p> <p>24 Hour power required (on L1) for control circuit and crankcase heaters</p> <p>Portable RCD shall be used with single phase socket.</p> </div>	G <table border="1" style="width:100%; border-collapse: collapse;"> <tr><th>REV</th><th>DESCRIPTION</th><th>ECN</th><th>DATE</th><th>APPROVED</th></tr> <tr><td>A</td><td>Initial Release</td><td></td><td>12/06/25</td><td>V.N.</td></tr> </table>	REV	DESCRIPTION	ECN	DATE	APPROVED	A	Initial Release		12/06/25	V.N.	H <div style="display: flex; align-items: center;"> <div> <p>©temperzone Ltd 2025</p> <p>temperzone</p> </div> </div>	I <div style="display: flex; align-items: center;"> <div style="flex: 1;"> <p>Drawn: V.N.</p> <p>Date: 12/06/25</p> </div> <div style="flex: 1;"> <p>Title: OPA 680RLTB2FPQD-(Z) UC8 c/w CAREL cPCO Wiring Schematic</p> </div> </div>	J <div style="display: flex; align-items: center;"> <div style="flex: 1;"> <p>Drawing No: 291-003-601</p> <p>SHEET 4 OF 4</p> </div> <div style="flex: 1;"> <p>Rev: A</p> </div> </div>
24VCB	24 Volt Circuit Breaker																																																																																																																																																																																																																																								
CCB	Control Circuit Breaker																																																																																																																																																																																																																																								
CCH	Crankcase Heater																																																																																																																																																																																																																																								
CMC	Compressor Motor																																																																																																																																																																																																																																								
DMF	Damper Motor Fresh Air																																																																																																																																																																																																																																								
DMR	Damper Motor Return Air																																																																																																																																																																																																																																								
EEV	Electronic Expansion Valve																																																																																																																																																																																																																																								
EMIFB	Electromagnetic Interference Filter Board																																																																																																																																																																																																																																								
ETH	Earth																																																																																																																																																																																																																																								
IBB	Insulated Bus Bar																																																																																																																																																																																																																																								
IFCB	Indoor Fan Circuit Breaker																																																																																																																																																																																																																																								
IFM	Indoor Fan Motor																																																																																																																																																																																																																																								
MTB	Main Terminal Block																																																																																																																																																																																																																																								
OFCB	Outdoor Fan Circuit Breaker																																																																																																																																																																																																																																								
OFM	Outdoor Fan Motor																																																																																																																																																																																																																																								
PCLP	P Clip																																																																																																																																																																																																																																								
RV	Reversing Valve																																																																																																																																																																																																																																								
SCB	Socket Circuit Breaker																																																																																																																																																																																																																																								
SPS	Single Phase Socket																																																																																																																																																																																																																																								
TB	Terminal Block																																																																																																																																																																																																																																								
TJ3W	Terminal Junction 3 Way																																																																																																																																																																																																																																								
TR	Transformer																																																																																																																																																																																																																																								
UC8	Unit Controller 8																																																																																																																																																																																																																																								
VSD	Variable Speed Drive																																																																																																																																																																																																																																								
VSDCB	Variable Speed Drive Circuit Breaker																																																																																																																																																																																																																																								
Wxx	Cable Marker																																																																																																																																																																																																																																								
DL	Discharge	S	Grey																																																																																																																																																																																																																																						
SL	Suction	S	White																																																																																																																																																																																																																																						
AMB	Ambient	S	Black																																																																																																																																																																																																																																						
DET	Deice	S	Blue																																																																																																																																																																																																																																						
LPT	Suction Pressure	T	Grey																																																																																																																																																																																																																																						
HPT	High Pressure	T	Grey																																																																																																																																																																																																																																						
Sensor to Carel cPCO																																																																																																																																																																																																																																									
Name	Type	Colour																																																																																																																																																																																																																																							
*Room	Room Air	RH% & Temp																																																																																																																																																																																																																																							
RA	Return Air	RH% & Temp																																																																																																																																																																																																																																							
SA	Supply Air	RH% & Temp																																																																																																																																																																																																																																							
**FA	Fresh Air	RH% & Temp																																																																																																																																																																																																																																							
*Room sensor supplied loose.																																																																																																																																																																																																																																									
**FA sensor on Economiser unit only.																																																																																																																																																																																																																																									
Sensor(S) / Transducers (T) to UC8																																																																																																																																																																																																																																									
Name	Type	Colour																																																																																																																																																																																																																																							
DL	Discharge	S	Grey																																																																																																																																																																																																																																						
SL	Suction	S	White																																																																																																																																																																																																																																						
AMB	Ambient	S	Black																																																																																																																																																																																																																																						
DET	Deice	S	Blue																																																																																																																																																																																																																																						
LPT	Suction Pressure	T	Grey																																																																																																																																																																																																																																						
HPT	High Pressure	T	Grey																																																																																																																																																																																																																																						
Unit with No Reheat																																																																																																																																																																																																																																									
* 1 x EEV per system																																																																																																																																																																																																																																									
* Carel cPCO Medium version with built-in EVD																																																																																																																																																																																																																																									
* 1 x Carel Field Bus Card																																																																																																																																																																																																																																									
Compressor	UC8 DIP SWITCHES	ON																																																																																																																																																																																																																																							
ALL SYSTEMS	INVERTER	1, 4, 6, 7, 9, 14																																																																																																																																																																																																																																							
Unit with Reheat																																																																																																																																																																																																																																									
* 2 x EEV on System 1																																																																																																																																																																																																																																									
* 1 x EEV on System 2																																																																																																																																																																																																																																									
* 1 x reheat coil																																																																																																																																																																																																																																									
* 1x Sporlan / Parker modulating valves																																																																																																																																																																																																																																									
* Carel cPCO Medium version with built-in EVD																																																																																																																																																																																																																																									
* 1 x Carel Field Bus Card																																																																																																																																																																																																																																									
Compressor	UC8 DIP SWITCHES	ON																																																																																																																																																																																																																																							
ALL SYSTEMS	INVERTER	1, 4, 6, 7, 9, 14																																																																																																																																																																																																																																							
VSD DIP switch settings																																																																																																																																																																																																																																									
DIP switch	↑	On/Off	↓																																																																																																																																																																																																																																						
1,4		On																																																																																																																																																																																																																																							
2,3		Off																																																																																																																																																																																																																																							
Modbus Devices Address																																																																																																																																																																																																																																									
UC8		44, 45																																																																																																																																																																																																																																							
VSD		10																																																																																																																																																																																																																																							
IFM		21, 22																																																																																																																																																																																																																																							
OFM		31, 32																																																																																																																																																																																																																																							
Ferrites																																																																																																																																																																																																																																									
Part Number	Frequency Type	Number of Turns																																																																																																																																																																																																																																							
A 012-001-074	High	1																																																																																																																																																																																																																																							
REV	DESCRIPTION	ECN	DATE	APPROVED																																																																																																																																																																																																																																					
A	Initial Release		12/06/25	V.N.																																																																																																																																																																																																																																					

