

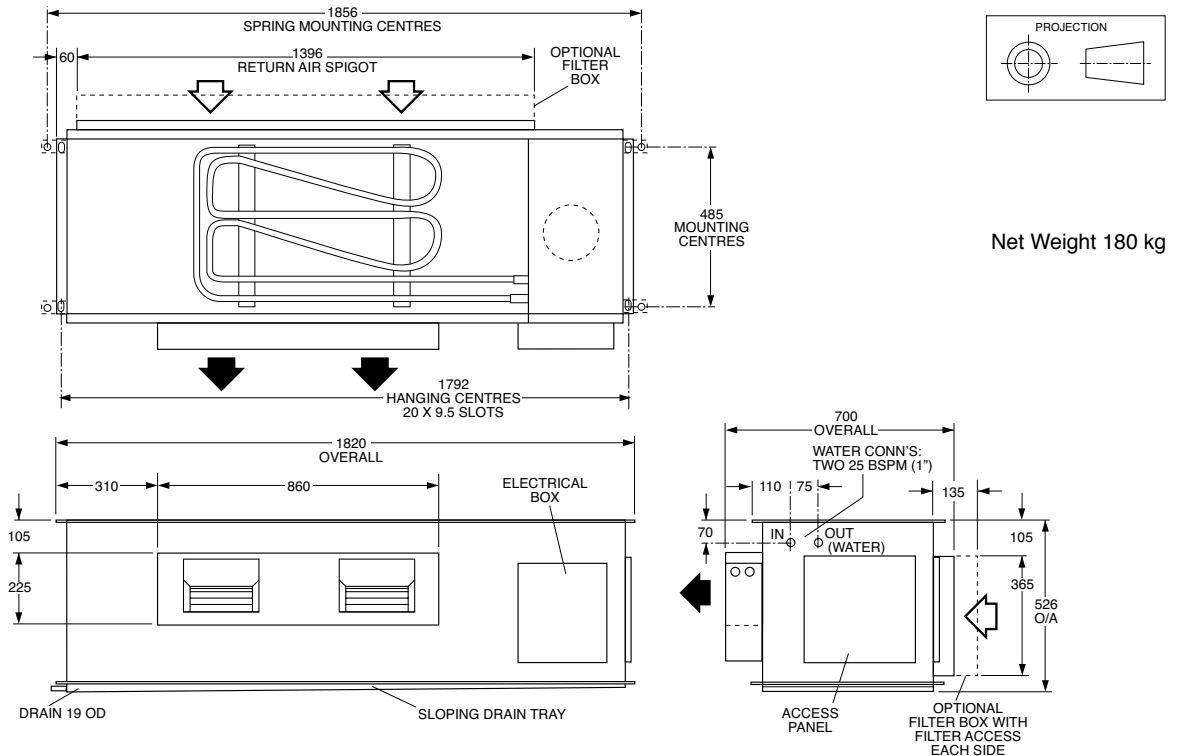
HWP 225

DATA SHEET

Ducted Water Cooled R410A Packaged Air Conditioners

Dimensions (mm)

Not to Scale



COOLING CAPACITY (kW)

AIR FLOW RATE l/s	COIL E.A.T.		LEAVING WATER TEMPERATURE (L.W.T.) °C																							
	W.B. °C	D.B. °C	25				30				35				40				45				50			
			T	S	FL	HR	T	S	FL	HR	T	S	FL	HR	T	S	FL	HR	T	S	FL	HR				
1180	17	23	23.9	18.4	1.1	27.7	22.8	17.2	1.1	26.9	21.8	16.4	1.1	26.4	20.8	15.9	1.1	25.6	20.4	15.3	1.1	25.5	20.2	13.9	1.1	25.4
	19	27	25.6	18.6	1.1	29.4	25.3	18.2	1.1	29.5	23.1	18.1	1.1	27.6	22.6	17.2	1.1	27.5	20.8	17.0	1.1	25.7	20.4	16.6	1.1	25.7
	21	31	27.3	21.5	1.1	30.5	27.1	21.4	1.1	31.1	26.8	21.2	1.1	31.6	24.5	21.0	1.1	29.5	23.5	20.7	1.1	28.6	22.1	20.6	1.1	27.4

T = Total Capacity (kW) S = Sensible Capacity (kW) HR = Heat Rejection (kW)
 FL = Water Flow (l/s) E.A.T. = Entering Air Temperature (°C) ○ = Nominal Capacity (kW)

NOTE: Capacities are **gross** and do not include allowance for fan motor heat loss. For fan motor heat loss refer to Air Handling Performance. Water flow and cooling capacity based on 5 °C water temp. difference.

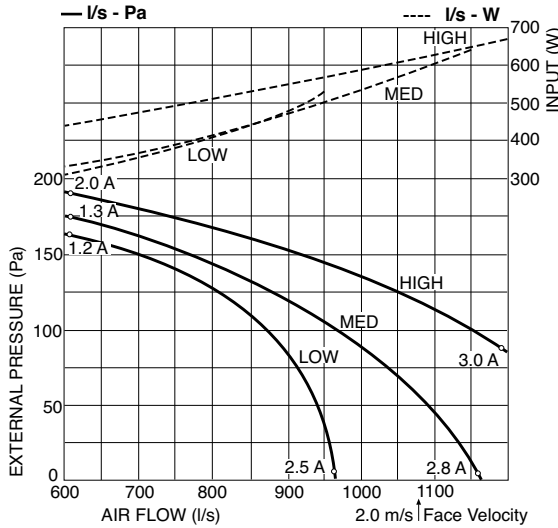
HEATING CAPACITY (kW)

HW*_R Reverse Cycle version

MODEL	WATER FLOW RATE l/s	COIL E.A.T. D.B. °C	LEAVING WATER TEMPERATURE (L.W.T.) °C											
			12.5				15.5				18.5			
			HC	HAb	EWT	INPT	HC	HAb	EWT	INPT	HC	HAb	EWT	INPT
HWP 225R	1.1	18	19.8	15.4	16.6	3.7	21.1	16.6	19.9	3.9	22.7	18.0	23.3	4.0
		21	19.6	15.0	16.6	3.9	21.0	16.2	19.9	4.1	22.6	17.6	23.2	4.3
		25	19.5	14.6	16.6	4.2	21.0	15.9	19.9	4.4	22.5	17.2	23.2	4.6

HC = Heating Capacity (kW) EWT = Entering Water Temperature (°C) (Minimum required 17°C)
 HAb = Heat Absorbed (kW) INPT = Compressor Input (kW)
 ○ = Nominal Capacity (kW) E.A.T. = Entering Air Temperature (°C)

AIR HANDLING PERFORMANCE Without Filter



FILTER (clean)	Coil Face Velocity (m/s)	1.5	2.0	2.5
	Pressure Loss (Pa)	15	25	40

QUICK REFERENCE **HWP 225**

Net Cooling Capacity *	22.5 kW
Electrical Input (Cooling)	5.87 kW
E.E.R. (Cooling)	3.38
Running Amps/ph. (Total)	13.3/13.4/13.2 (19.7/17/17)**
Fan Motor Full Load Amps	2.9
Electrical Supply Required	3 ph. 380-415V ±10% a.c. 50 Hz
Recom'd External Fuse Size	32 A
Refrigerant	HFC-410A (R410A)
Minimum Water Flow	1.1 l/s
Water Coil Pressure Drop	34.5 kPa (5 psi)
Filter (EU2/G2 rated)	optional
Electric Heat Option **	12 kW

* At AS/NZS 3823 conditions.

Note

- In tropical (high humidity) conditions care must be taken to select an air flow which gives a suitable coil face air velocity, to prevent water carry over.
- For applications with low resistance be sure not to exceed the fan motor full load amps.
- Applications using full or high proportions of fresh air should be referred to **temperzone** engineering office to establish the correct selection of units.

SOUND LEVELS

Note: SPL measured to JIS 8616 (1m from source in an anechoic chamber)

SUPPLY AIR + INSULATED DUCT

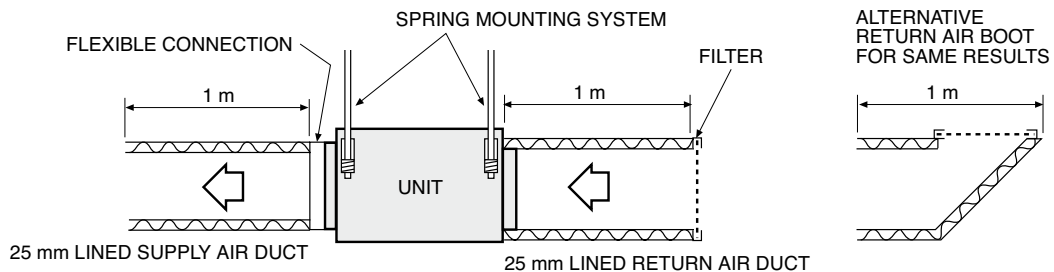
MODEL	FAN SPEED	AIR FLOW l/s	SOUND PRESSURE LEVELS (SPL) dB(A)	SOUND POWER LEVELS (SWL) dB						
				SWL dB(A)	OCTAVE BAND FREQ. Hz					
					125	250	500	1 k	2 k	4 k
HWP 225	LOW	1000	52	62	65	61	62	56	48	39
	MED	1050	54	64	70	63	64	59	51	42
	HIGH	1200	58	68	72	66	66	65	55	46

SUPPLY AIR OUTLET

MODEL	FAN SPEED	AIR FLOW l/s	SOUND PRESSURE LEVELS (SPL) dB(A)	SOUND POWER LEVELS (SWL) dB						
				SWL dB(A)	OCTAVE BAND FREQ. Hz					
					125	250	500	1 k	2 k	4 k
HWP 225	LOW	1000	57	67	66	62	65	62	60	54
	MED	1050	59	69	67	65	66	65	62	57
	HIGH	1200	62	72	69	67	69	68	65	61

CASE BREAKOUT + RETURN AIR

MODEL	FAN SPEED	AIR FLOW l/s	SOUND PRESSURE LEVELS (SPL) dB(A)	SOUND POWER LEVELS (SWL) dB						
				SWL dB(A)	OCTAVE BAND FREQ. Hz					
					125	250	500	1 k	2 k	4 k
HWP 225	LOW	1000	57	67	72	63	64	62	59	54
	MED	1050	58	68	73	65	66	63	61	55
	HIGH	1200	60	70	74	66	66	66	63	57



Sound Pressure Levels (SPL) Within A Room

Deduct the room absorption effect below from the Sound Power Levels (SWL) above to obtain Sound Pressure Levels within a room. Note: Occupant at least 1.5 m from sound source.

ROOM TYPE	OCTAVE BAND FREQ. Hz					
	125	250	500	1k	2k	4k
	ROOM ABSORPTION EFFECT					
SOFT	4	8	11	11	11	11
MEDIUM	3	7	8	9	9	9
HARD	0	1	3	4	4	5

NOTE

The manufacturer reserves the right to change specifications at any time without notice or obligation. Certified data available on request.