

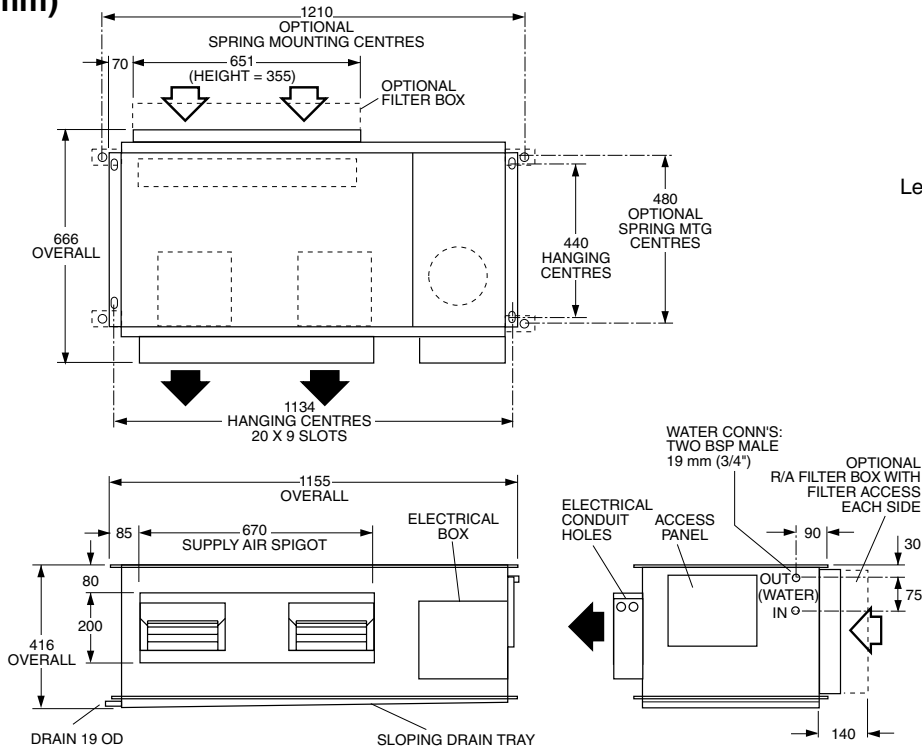
HWP 96

DATA SHEET

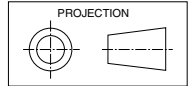
Ducted Water Cooled R410A Packaged Air Conditioners

Dimensions (mm)

Not to Scale



HWP 96



Left hand version available

Net Weight 109 kg

COOLING CAPACITY (kW)

AIR FLOW RATE l/s	COIL E.A.T.		LEAVING WATER TEMPERATURE (L.W.T.) °C																							
	W.B. °C	D.B. °C	25				30				35				40				45				50			
			T	S	FL	HR	T	S	FL	HR	T	S	FL	HR	T	S	FL	HR	T	S	FL	HR				
555	17	23	10.3	7.9	0.6	12.1	9.8	7.4	0.6	11.8	9.4	7.0	0.6	11.5	8.9	6.8	0.6	11.2	8.8	6.6	0.6	11.2	8.7	6.0	0.6	11.1
	19	27	11.0	8.0	0.6	12.9	10.9	7.8	0.6	12.9	9.9	7.8	0.6	12.1	9.7	7.4	0.6	12.0	8.9	7.3	0.6	11.2	8.8	7.1	0.6	11.2
	21	31	11.7	9.2	0.6	13.4	11.6	9.2	0.6	13.6	11.5	9.1	0.6	13.8	10.5	9.0	0.6	12.9	10.1	8.9	0.6	12.5	9.5	8.8	0.6	12.0

T = Total Capacity (kW)
FL = Water Flow (l/s)

S = Sensible Capacity (kW)
E.A.T. = Entering Air Temperature (°C)

HR = Heat Rejection (kW)
○ = Nominal Capacity (kW)

NOTE: Capacities are **gross** and do not include allowance for fan motor heat loss. For fan motor heat loss refer to Air Handling Performance. Water flow and cooling capacity based on 5 °C water temp. difference.

HEATING CAPACITY (kW)

HW*~~R~~ Reverse Cycle version

MODEL	WATER FLOW RATE l/s	COIL E.A.T. D.B. °C	LEAVING WATER TEMPERATURE (L.W.T.) °C											
			12.5				15.5				18.5			
			HC	HAb	EWT	INPT	HC	HAb	EWT	INPT	HC	HAb	EWT	INPT
HWP 96R	0.6	18	8.1	5.7	15.6	2.1	8.6	6.1	18.8	2.1	9.2	6.7	22.0	2.2
		21	8.0	5.5	15.6	2.2	8.6	6.0	18.8	2.3	9.2	6.5	22.0	2.4
		25	8.0	5.3	15.5	2.4	8.6	5.8	18.8	2.5	9.2	6.3	22.0	2.6

HC = Heating Capacity (kW)
HAb = Heat Absorbed (kW)

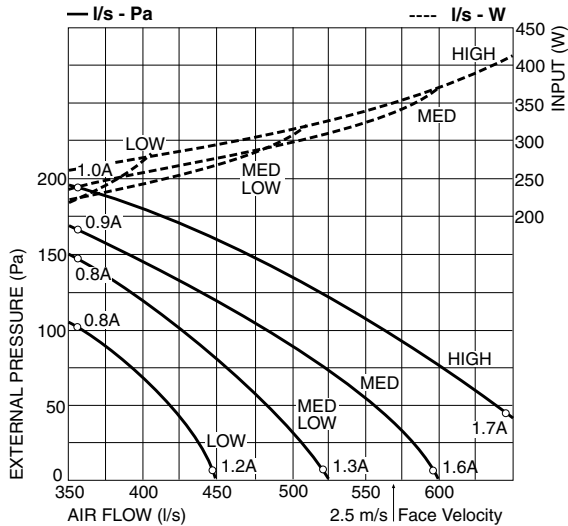
EWT = Entering Water Temperature (°C) (Minimum required 17°C)
INPT = Compressor Input (kW)

○ = Nominal Capacity (kW)

E.A.T. = Entering Air Temperature (°C)

AIR HANDLING PERFORMANCE

Without Filter



FILTER (clean)	Coil Face Velocity (m/s)	1.5	2.0	2.5
	Pressure Loss (Pa)	5	9	13

QUICK REFERENCE

HWP 96

Electrical Input (Cooling)	2.75 kW
E.E.R. (Cooling)	3.5
Running Amps (Total)	12.5
Fan Motor Full Load Amps	1.48
Electrical Supply Required	1 ph. 220-240V ±10% a.c. 50 Hz
Recom'd External Fuse Size	25 A
Refrigerant	HFC-410A (R410A)
Minimum Water Flow	0.6 l/s
Water Coil Pressure Drop	48 kPa (7 psi)
Filter (polypropylene net)	optional
Electric Heat Option	4 kW

Note

1. In tropical (high humidity) conditions care must be taken to select an air flow which gives a suitable coil face air velocity, to prevent water carry over.
2. For applications with low resistance be sure not to exceed the fan motor full load amps.
3. Applications using full or high proportions of fresh air should be referred to **temperzone** engineering office to establish the correct selection of units.

SOUND LEVELS

Note: SPL measured to JIS 8616 (1m from source in an anechoic chamber)

SUPPLY AIR + INSULATED DUCT

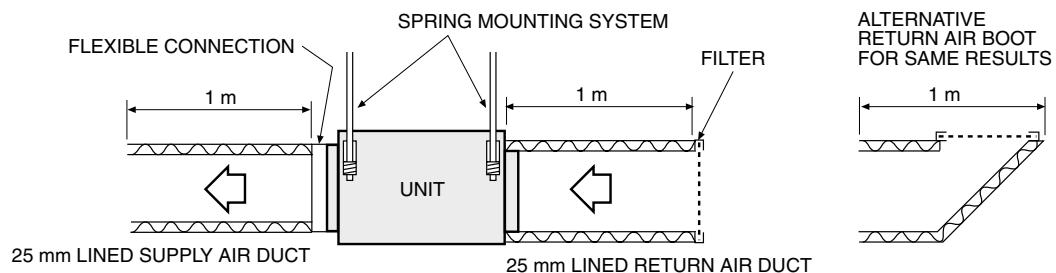
MODEL	FAN SPEED	AIR FLOW l/s	SOUND PRESSURE LEVELS (SPL) dB(A)	SOUND POWER LEVELS (SWL) dB						
				SWL dB(A)	OCTAVE BAND FREQ. Hz					
					125	250	500	1 k	2 k	4 k
HWP 96	LOW	425	44	55	58	54	55	49	38	28
	MED/LOW	475	46	57	61	54	56	52	41	30
	MED	520	47	58	60	57	57	54	43	32
	HIGH	555	49	60	62	57	59	57	46	35

SUPPLY AIR OUTLET

MODEL	FAN SPEED	AIR FLOW l/s	SOUND PRESSURE LEVELS (SPL) dB(A)	SOUND POWER LEVELS (SWL) dB						
				SWL dB(A)	OCTAVE BAND FREQ. Hz					
					125	250	500	1 k	2 k	4 k
HWP 96	LOW	425	50	61	60	56	58	58	53	46
	MED/LOW	475	53	64	61	57	60	61	56	49
	MED	520	55	66	62	59	62	63	58	52
	HIGH	555	58	69	63	61	65	66	62	62

CASE BREAKOUT + RETURN AIR

MODEL	FAN SPEED	AIR FLOW l/s	SOUND PRESSURE LEVELS (SPL) dB(A)	SOUND POWER LEVELS (SWL) dB						
				SWL dB(A)	OCTAVE BAND FREQ. Hz					
					125	250	500	1 k	2 k	4 k
HWP 96	LOW	425	52	63	58	56	63	55	50	51
	MED/LOW	475	52	63	58	57	63	57	53	52
	MED	520	53	64	61	59	63	58	53	53
	HIGH	555	55	66	62	60	64	61	56	54



Sound Pressure Levels (SPL) Within A Room

Deduct the room absorption effect below from the Sound Power Levels (SWL) above to obtain Sound Pressure Levels within a room. Note: Occupant at least 1.5 m from sound source.

ROOM TYPE	OCTAVE BAND FREQ. Hz					
	125	250	500	1k	2k	4k
	ROOM ABSORPTION EFFECT					
SOFT	4	8	11	11	11	11
MEDIUM	3	7	8	9	9	9
HARD	0	1	3	4	4	5

NOTE

The manufacturer reserves the right to change specifications at any time without notice or obligation. Certified data available on request.