

# IJD 2400

Nominal Airflow: 8600 l/s

## Cooling Capacity (kW)

Entering Air Temperature 23° C D.B., 17° C W.B.

Total = Total Capacity (kW); Sens. = Sensible Capacity (kW)

Note: Cooling capacities are based on the nominal airflow.

COIL	WATER FLOW (l/s)	PRESSURE DROP (kPa)	ENTERING WATER TEMPERATURE °C									
			5		6		7		8		9	
			Total	Sens.	Total	Sens.	Total	Sens.	Total	Sens.	Total	Sens.
4 ROWS	4.00	6.5	135.0	106.5	126.1	102.9	115.8	98.8	105.5	94.7	95.0	90.6
	6.00	13.8	160.0	117.0	146.8	111.4	134.9	106.5	122.9	101.6	110.9	96.8
	8.00	22.7	175.3	123.5	163.6	118.5	150.2	112.8	135.0	106.5	122.9	101.6
6 ROWS	4.00	9.4	158.0	118.5	146.6	113.7	135.1	108.9	122.9	104.0	111.3	99.3
	6.00	19.8	185.2	130.2	172.4	124.6	157.9	118.4	144.6	112.9	129.8	106.8
	8.00	33.4	203.7	138.5	189.5	132.1	173.5	125.1	158.8	118.8	143.1	112.2

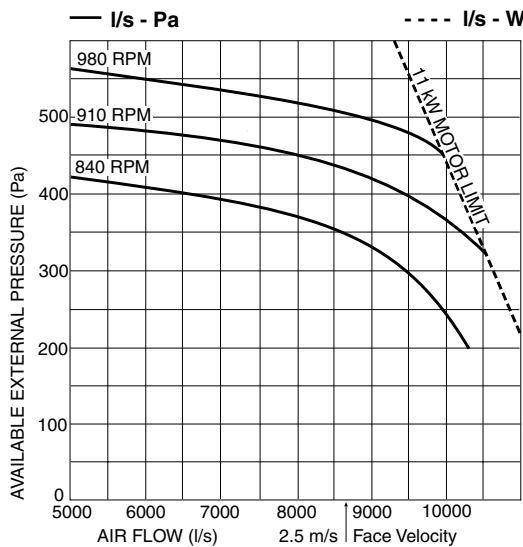
## Heating Capacity (kW)

Entering Air Temperature 21° C

Note: Heating capacities are total - based on the nominal airflow. Electric Heating option: 54 kW

COIL	WATER FLOW (l/s)	PRESSURE DROP (kPa)	ENTERING WATER TEMPERATURE °C									
			40	45	50	55	60	65	70	75	80	
1 ROW	4.00	8.6	68.3	86.6	104.5	122.4	140.3	158.2	176.5	194.4	212.3	
	6.00	17.7	74.2	93.5	112.8	132.1	152.0	171.2	190.5	209.9	229.7	
	8.00	29.7	78.2	98.9	118.8	139.4	160.1	180.7	201.3	222.0	242.6	

## Air Handling



STD MOTOR SIZE 11 kW  
MAX D.O.L. MOTOR 11 kW  
MAX. FAN SPEED 1000 RPM  
STD PULLEY RANGE  
840-980 RPM; SET AT 910 RPM

## Sound Levels

Test Conditions: JIS 8616. 1 m ducting with 25 mm insulation. Sound Pressure Levels are at 1 m from source.

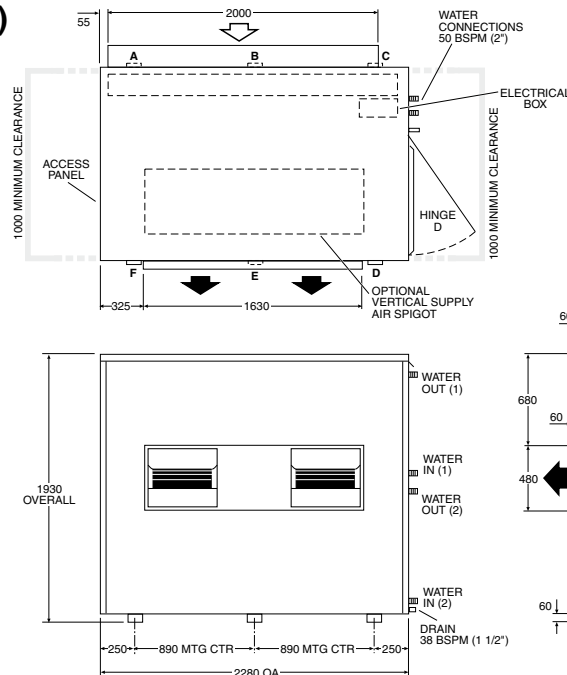
FAN SPEED RPM	SPL dB(A)	SWL dB(A)	OCTAVE BAND FREQ. Hz					
			125	250	500	1 k	2 k	4 k
840	64	74	78	77	72	66	63	59
910	71	81	83	82	79	75	71	66
980	77	87	89	88	84	81	79	75

### Note:

1. Air flows given are for a unit with no filter installed. Refer page 53 for filter pressure drop.
2. In a free blow application, beware of exceeding indoor fan motor's full load amp limit.

## Dimensions (mm)

Not to Scale



POINT LOADS (kg) *					
A	B	C	D	E	F
144	163	184	125	106	87

\* 4/1 row coil incl. water

