

# IJD 950

Nominal Airflow: 3600 l/s

## Cooling Capacity (kW)

Entering Air Temperature 23°C D.B., 17°C W.B.

Total = Total Capacity (kW); Sens. = Sensible Capacity (kW)

Note: Cooling capacities are based on the nominal airflow.

| COIL   | WATER FLOW (l/s) | PRESSURE DROP (kPa) | ENTERING WATER TEMPERATURE °C |       |       |       |       |       |       |       |       |       |
|--------|------------------|---------------------|-------------------------------|-------|-------|-------|-------|-------|-------|-------|-------|-------|
|        |                  |                     | 5                             |       | 6     |       | 7     |       | 8     |       | 9     |       |
|        |                  |                     | Total                         | Sens. | Total | Sens. | Total | Sens. | Total | Sens. | Total | Sens. |
| 4 ROWS | 2.50             | 7.7                 | 61.5                          | 46.3  | 57.2  | 44.5  | 52.2  | 42.5  | 47.8  | 40.7  | 42.8  | 38.7  |
|        | 3.50             | 14.0                | 69.6                          | 49.7  | 63.9  | 47.3  | 58.9  | 45.2  | 53.8  | 43.1  | 48.0  | 40.8  |
|        | 4.50             | 22.6                | 74.8                          | 51.9  | 69.1  | 49.5  | 63.4  | 47.0  | 57.6  | 44.6  | 51.7  | 42.3  |
| 6 ROWS | 2.50             | 11.1                | 72.5                          | 51.9  | 67.0  | 49.6  | 62.1  | 47.5  | 56.2  | 45.1  | 51.2  | 43.1  |
|        | 3.50             | 20.6                | 81.6                          | 55.9  | 75.5  | 53.3  | 69.4  | 50.6  | 63.1  | 48.0  | 56.8  | 45.4  |
|        | 4.50             | 31.9                | 87.1                          | 58.4  | 80.8  | 55.6  | 74.7  | 52.9  | 67.8  | 49.9  | 61.5  | 47.3  |

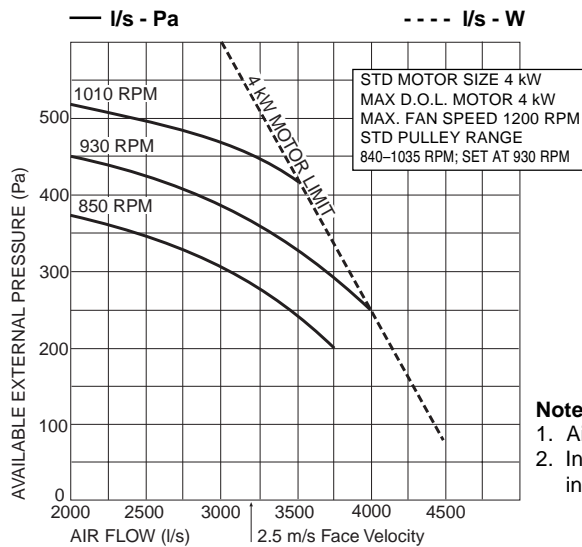
## Heating Capacity (kW)

Entering Air Temperature 21°C

Note: Heating capacities are total - based on the nominal airflow. Electric Heating option: 27 kW

| COIL  | WATER FLOW (l/s) | PRESSURE DROP (kPa) | ENTERING WATER TEMPERATURE °C |      |      |      |      |      |      |      |      |
|-------|------------------|---------------------|-------------------------------|------|------|------|------|------|------|------|------|
|       |                  |                     | 40                            | 45   | 50   | 55   | 60   | 65   | 70   | 75   | 80   |
| 1 ROW | 2.00             | 7.2                 | 27.6                          | 35.0 | 42.2 | 49.4 | 56.7 | 63.9 | 71.1 | 78.5 | 85.7 |
|       | 3.00             | 14.3                | 29.8                          | 37.7 | 45.6 | 53.5 | 61.2 | 69.1 | 77.0 | 84.9 | 92.6 |
|       | 4.00             | 24.9                | 31.5                          | 39.7 | 48.0 | 56.3 | 64.9 | 73.2 | 81.4 | 89.4 | 98.0 |

## Air Handling



## Sound Levels

Test Conditions: JIS 8616. 1 m ducting with 25 mm insulation. Sound Pressure Levels are at 1 m from source.

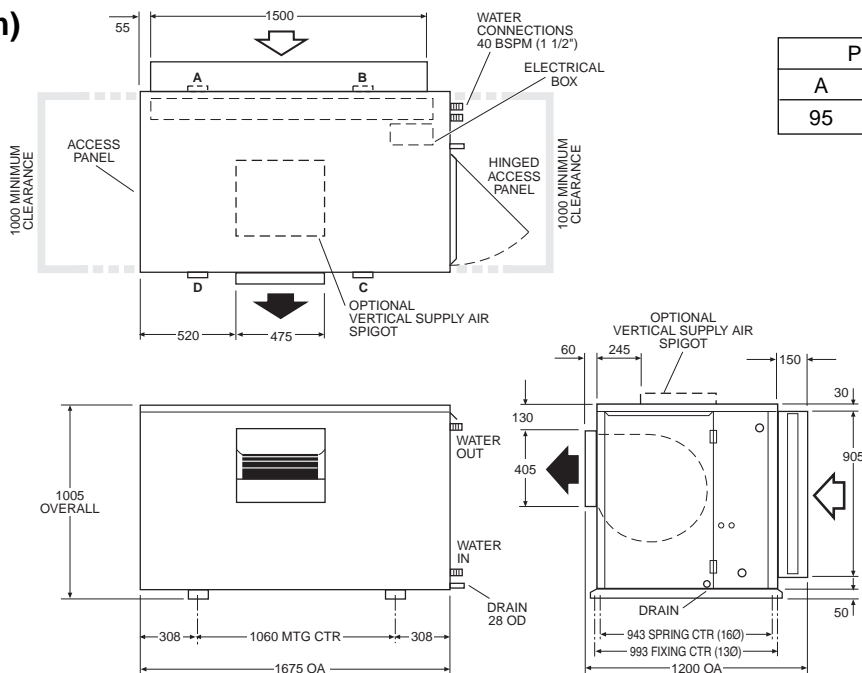
| FAN SPEED RPM | SPL dB(A) | SWL dB(A) | OCTAVE BAND FREQ. Hz |     |     |     |     |     |
|---------------|-----------|-----------|----------------------|-----|-----|-----|-----|-----|
|               |           |           | 125                  | 250 | 500 | 1 k | 2 k | 4 k |
| 850           | 67        | 77        | 78                   | 78  | 74  | 71  | 69  | 66  |
| 930           | 68        | 78        | 78                   | 78  | 74  | 73  | 70  | 68  |
| 1010          | 69        | 79        | 79                   | 79  | 75  | 74  | 71  | 68  |

### Note:

1. Air flows given are for a unit with no filter installed.
2. In a free blow application, beware of exceeding indoor fan motor's full load amp limit.

## Dimensions (mm)

Not to Scale



| POINT LOADS (kg) * |     |    |    |
|--------------------|-----|----|----|
| A                  | B   | C  | D  |
| 95                 | 103 | 64 | 54 |

\* 4/1 row coil including water