

IMDL 40-M

Nominal Airflow: 170 l/s

Cooling Capacity (kW)

Entering Air Temperature 23° C D.B., 17° C W.B.

Total = Total Capacity (kW); Sens. = Sensible Capacity (kW)

Note: Cooling capacities are based on the nominal airflow.

COIL	WATER FLOW (l/s)	PRESSURE DROP (kPa)	ENTERING WATER TEMPERATURE ° C									
			5		6		7		8		9	
			Total	Sens.	Total	Sens.	Total	Sens.	Total	Sens.	Total	Sens.
3 ROWS	0.12	7.6	3.1	2.1	2.9	2.0	2.6	1.9	2.4	1.9	2.1	1.8
	0.19	17.6	3.6	2.3	3.3	2.2	3.0	2.1	2.8	2.0	2.5	1.9
	0.26	30.0	3.9	2.5	3.6	2.3	3.3	2.2	3.0	2.1	2.7	2.0
4 ROWS	0.15	6.6	3.9	2.5	3.6	2.3	3.3	2.2	3.0	2.1	2.7	2.0
	0.25	16.3	4.4	2.7	4.1	2.6	3.8	2.4	3.5	2.3	3.1	2.2
	0.35	30.0	4.7	2.8	4.4	2.7	4.1	2.5	3.7	2.4	3.3	2.3

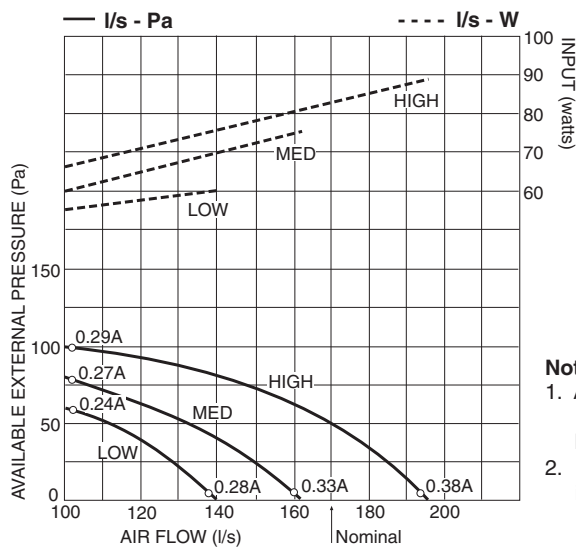
Heating Capacity (kW)

Entering Air Temperature 21° C

Note: Heating capacities are total - based on the nominal airflow. Electric Heating option: 1.5 kW

COIL	WATER FLOW (l/s)	PRESSURE DROP (kPa)	ENTERING WATER TEMPERATURE ° C									
			40	45	50	55	60	65	70	75	80	
			1 ROW	0.04	6.4	1.2	1.5	1.8	2.1	2.5	2.8	3.1
0.07	17.4	1.4		1.7	2.1	2.5	2.8	3.2	3.6	3.9	4.3	
0.10	33.0	1.5		1.9	2.3	2.6	3.0	3.4	3.8	4.2	4.6	

Air Handling



Sound Levels

Test Conditions: JIS 8616. 1 m ducting with 25 mm insulation. Sound Pressure Levels are at 1 m from source.

FAN SPEED	SPL dB(A)	SWL dB(A)	OCTAVE BAND FREQ. Hz					
			125	250	500	1 k	2 k	4 k
			SOUND POWER LEVELS dB					
LOW	33	43	45	45	42	37	32	23
MEDIUM	35	45	47	48	44	39	34	26
HIGH	38	48	50	51	46	41	38	30

Note: Return air plenum, filter and standard supply air spigot attached.

Note:

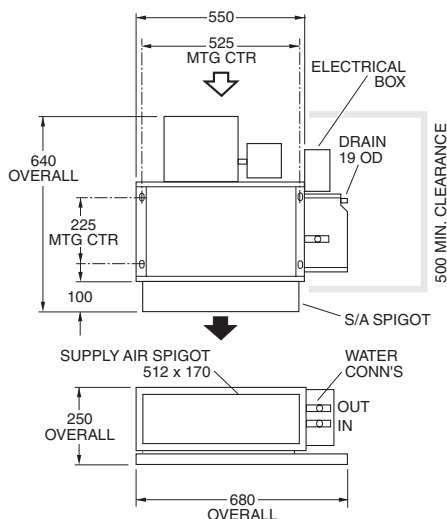
- Air flows given are for a standard unit with rectangular supply air spigot and no filter installed. Refer page 53 for filter pressure drop.
- In a free blow application, beware of exceeding indoor fan motor's full load amp limit.

Dimensions (mm)

Not to Scale

Right Handed models shown

Standard Unit



Standard Unit with Return Air Plenum & Multi-Outlet Supply Air Spigot

