

# IMDL 90-M

Nominal Airflow: 350 l/s

## Cooling Capacity (kW)

Entering Air Temperature 23° C D.B., 17° C W.B.

Total = Total Capacity (kW); Sens. = Sensible Capacity (kW)

Note: Cooling capacities are based on the nominal airflow.

COIL	WATER FLOW (l/s)	PRESSURE DROP (kPa)	ENTERING WATER TEMPERATURE ° C									
			5		6		7		8		9	
			Total	Sens.	Total	Sens.	Total	Sens.	Total	Sens.	Total	Sens.
3 ROWS	0.25	9.9	6.6	4.7	6.1	4.5	5.6	4.3	5.1	4.1	4.6	3.9
	0.35	18.1	7.4	5.1	6.8	4.8	6.3	4.6	5.6	4.3	5.1	4.1
	0.45	28.5	7.9	5.3	7.3	5.0	6.7	4.8	6.0	4.5	5.4	4.2
4 ROWS	0.30	8.2	7.8	5.4	7.2	5.2	6.7	5.0	6.0	4.7	5.4	4.4
	0.45	16.7	8.6	5.8	8.0	5.5	7.3	5.2	6.7	5.0	6.0	4.7
	0.60	28.5	9.2	6.1	8.5	5.8	7.8	5.4	7.1	5.1	6.4	4.8

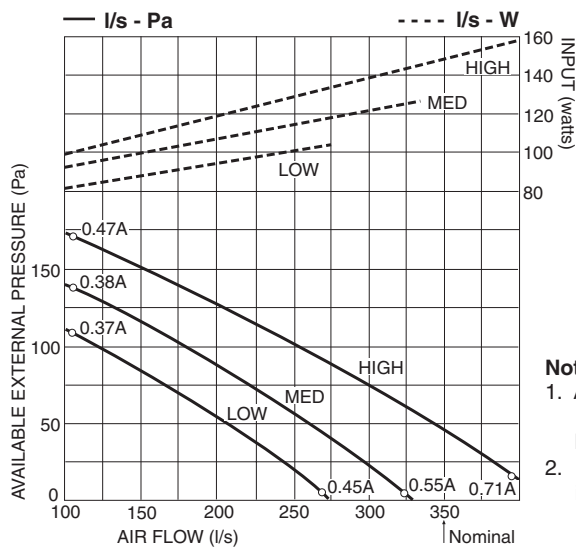
## Heating Capacity (kW)

Entering Air Temperature 21° C

Note: Heating capacities are total - based on the nominal airflow. Electric Heating option: 3 kW

COIL	WATER FLOW (l/s)	PRESSURE DROP (kPa)	ENTERING WATER TEMPERATURE ° C									
			40	45	50	55	60	65	70	75	80	
1 ROW	0.10	10.3	3.1	4.0	4.8	5.6	6.4	7.3	8.1	8.9	9.7	
	0.14	18.8	3.4	4.3	5.1	6.0	6.9	7.8	8.7	9.6	10.4	
	0.18	29.4	3.6	4.5	5.4	6.4	7.3	8.2	9.2	10.1	11.0	

## Air Handling



## Sound Levels

Test Conditions: JIS 8616. 1 m ducting with 25 mm insulation. Sound Pressure Levels are at 1 m from source.

FAN SPEED	SPL dB(A)	SWL dB(A)	OCTAVE BAND FREQ. Hz					
			125	250	500	1 k	2 k	4 k
			SOUND POWER LEVELS dB					
LOW	33	43	46	45	43	35	30	19
MED	36	46	48	47	46	39	34	24
HIGH	40	50	52	51	49	44	38	31

Note: Return air plenum, filter and standard supply air spigot attached.

### Note:

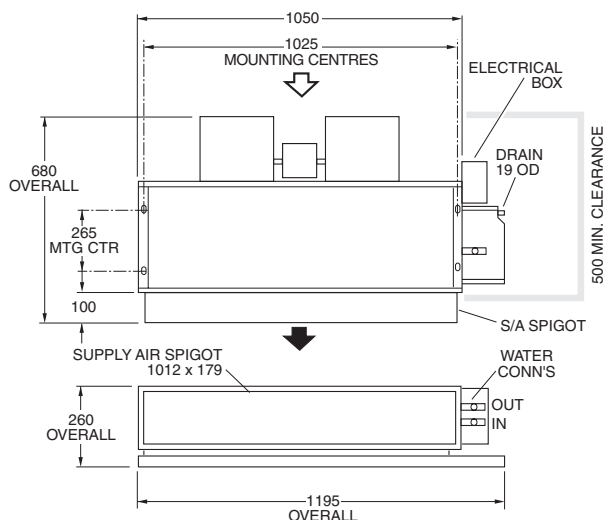
- Air flows given are for a standard unit with rectangular supply air spigot and no filter installed. Refer page 53 for filter pressure drop.
- In a free blow application, beware of exceeding indoor fan motor's full load amp limit.

## Dimensions (mm)

Not to Scale

Right Handed models shown

### Standard Unit



### Standard Unit with Return Air Plenum & Multi-Outlet Supply Air Spigot

